



2023 RACING LOUISVILLE FC  
**MEDIA GUIDE**



# Table of Contents

2023 SCHEDULE	<b>3</b>
ABOUT RACING LOUISVILLE	<b>4</b>
FRONT OFFICE DIRECTORY	<b>5</b>
EXECUTIVE BIOS	<b>6</b>
FACILITIES	<b>7</b>
TECHNICAL STAFF	<b>9</b>
ROSTERS	<b>10</b>
PLAYER BIOS	<b>13</b>
2022 STATS	<b>40</b>
NWSL MEDIA POLICY	<b>44</b>

For photos, videos and other files: [RacingLouFC.com/media](https://RacingLouFC.com/media). Photos and videos will be added as soon as possible following games and other media availabilities. Reach Jeff Greer (jgreer@racingloufc.com) with any requests.

# 2023 RACING LOUISVILLE FC SCHEDULE

DATE	OPPONENT	TIME	VENUE	
Sunday	3.26	Houston Dash	7:00 p.m.	Shell Energy Stadium
<b>Saturday</b>	<b>4.01</b>	<b>Washington Spirit</b>	<b>3:00 p.m.</b>	<b>Lynn Family Stadium</b>
Saturday	4.15	Angel City FC	10:00 p.m.	BMO Stadium
Saturday	4.22	Portland Thorns	10:30 p.m.	Providence Park
<b>Saturday</b>	<b>4.29</b>	<b>OL Reign</b>	<b>7:30 p.m.</b>	<b>Lynn Family Stadium</b>
Saturday	5.06	Orlando Pride	7:00 p.m.	Exploria Stadium
<b>Friday</b>	<b>5.12</b>	<b>Chicago Red Stars</b>	<b>7:30 p.m.</b>	<b>Lynn Family Stadium</b>
<b>Wednesday</b>	<b>5.17</b>	<b>Kansas City Current*</b>	<b>7:30 p.m.</b>	<b>Lynn Family Stadium</b>
Saturday	5.20	Kansas City Current	8:00 p.m.	Children's Mercy Park
<b>Saturday</b>	<b>5.27</b>	<b>North Carolina Courage</b>	<b>8:00 p.m.</b>	<b>Lynn Family Stadium</b>
Wednesday	5.31	Chicago Red Stars*	8:00 p.m.	SeatGeek Stadium
Saturday	6.03	Washington Spirit	8:00 p.m.	Audi Field
<b>Friday</b>	<b>6.09</b>	<b>San Diego Wave FC</b>	<b>8:00 p.m.</b>	<b>Lynn Family Stadium</b>
<b>Wednesday</b>	<b>6.14</b>	<b>Houston Dash*</b>	<b>8:00 p.m.</b>	<b>Lynn Family Stadium</b>
<b>Sunday</b>	<b>6.18</b>	<b>NJ/NY Gotham FC</b>	<b>4:00 p.m.</b>	<b>Lynn Family Stadium</b>
Saturday	6.24	North Carolina Courage	7:00 p.m.	WakeMed Soccer Park
Saturday	7.01	OL Reign	3:30 p.m.	Lumen Field
<b>Friday</b>	<b>7.07</b>	<b>Kansas City Current</b>	<b>8:00 p.m.</b>	<b>Lynn Family Stadium</b>
<b>Friday</b>	<b>7.21</b>	<b>Chicago Red Stars*</b>	<b>7:00 p.m.</b>	<b>Lynn Family Stadium</b>
Saturday	7.29	Houston Dash*	8:30 p.m.	Shell Energy Stadium
Friday	8.04	Kansas City Current*	<b>8:00 p.m.</b>	Children's Mercy Park
<b>Saturday</b>	<b>8.19</b>	<b>Angel City FC</b>	<b>7:30 p.m.</b>	<b>Lynn Family Stadium</b>
Sunday	8.27	NJ/NY Gotham FC	5:30 p.m.	Red Bull Arena
<b>Saturday</b>	<b>9.02</b>	<b>Portland Thorns</b>	<b>7:30 p.m.</b>	<b>Lynn Family Stadium</b>
<b>Friday</b>	<b>9.15</b>	<b>Houston Dash</b>	<b>7:30 p.m.</b>	<b>Lynn Family Stadium</b>
Saturday	9.30	Chicago Red Stars	8:00 p.m.	SeatGeek Stadium
<b>Friday</b>	<b>10.06</b>	<b>Orlando Pride</b>	<b>7:30 p.m.</b>	<b>Lynn Family Stadium</b>
Sunday	10.15	San Diego Wave FC	5:00 p.m.	Snapdragon Stadium

**HOME**

AWAY

**\*Challenge Cup Games**

*All times Eastern. Dates and times subject to change.*

# About Racing Louisville FC

---

Louisville is home to a top-tier professional sports franchise for the first time in almost 50 years, fielding Racing Louisville FC of the National Women's Soccer League, considered the best professional women's soccer league on the planet.

Racing Louisville FC's roster contains World Cup and NWSL winners and national team-caliber players in addition to regularly hosting them. Rose Lavelle, Alex Morgan and Megan Rapinoe have all played at Lynn Family Stadium through Racing's first two seasons, along with Carli Lloyd, Marta and Ali Krieger.

In 2021, Racing's 22 points in NWSL regular-season play set a new record for an expansion team, with the season highlighted by a victory in the inaugural The Women's Cup, an international tournament in Louisville that featured Bayern Munich and Paris Saint-Germain.

Last season, Racing improved on its performance from the year before, averaging 1.04 points per game vs. 0.91 in 2021. Young Louisville stars Savannah DeMelo and Katie Lund both earned NWSL team of the month honors, with DeMelo also claiming May's rookie of the month award.

Racing is run by Soccer Holdings, LLC, the same organization behind Louisville City FC, the two-time USL Championship titlists who have played in the Derby City since 2015. Both Racing and LouCity play home games at Lynn Family Stadium (capacity: 15,304) and operate out of the Lynn Family Sports Vision & Training Center along River Road.

## 2019

### October 22

Louisville announced as the NWSL's fourth expansion market.

## 2020

### July 8

Racing's name and logo designed by the renowned Matthew Wolff were unveiled.

### October 26

Trade with the Chicago Red Stars made Savannah McCaskill and Yuki Nagasato the club's first players.

### November 12

Racing acquired rights to 14 players during the 2020 NWSL Expansion Draft.

## 2021

### January 12

Racing led off the 2021 NWSL College Draft by selecting Emily Fox at No. 1 overall.

### February 2

With snow cleared off the pitch, Racing was able to hold its first-ever training session.

### April 10

Cece Kizer scored first and Brooke Hendrix equalized in stoppage time as Racing drew the Orlando Pride, 2-2, in a dramatic inaugural game.

### May 21

Louisville native Emina Ekic scored a goal and assisted another in Racing's first victory, a 2-0 win over the eventual league champion Washington Spirit.

### July 16

Racing's new facility, shared with Louisville City FC, opened as the Lynn Family Sports Vision & Training Center.

### August 21

Racing defeated FC Bayern Munich on penalty kicks, with substitute goalkeeper Katie Lund scoring the game-winner in the 11th round of the shootout, to hoist the first The Women's Cup trophy.

### November 20

Racing hosts the NWSL Championship with 10,360 on hand at Lynn Family Stadium.

## 2022

### August 2

Goalkeeper Katie Lund makes 12 saves against OL Reign to break the NWSL single-game record.

### August 27

Racing set a new club attendance record of 8,729 fans at its match against the Chicago Red Stars.

### October 1

Katie Lund set a new NWSL record with 112 regular-season saves.

# Front Office Directory

---

## FINANCE & ADMINISTRATION

### **Erin Wilkins**

Vice President of Human Resources

### **Austin Buchanan**

Director of Strategy and Compliance

### **Lauren Kaatz**

Administrative Assistant

### **Sam Seigle**

Vice President of Finance

### **Monica Kelley**

Controller

### **Rusty Fazio**

Vice President of Technology

### **Sheryl Moore**

Staff Accountant

### **Brandon Morris**

Vice President of Operations

### **Robbie Cook**

IT Technician

## PARTNERSHIP DEVELOPMENT

### **Pat Denbow**

Vice President of Partnerships

### **Caity Morris**

Partnership Activation Manager

### **Brad Gordon**

Sr. Partnership Development Director

### **Nicole Venema**

Partnership Activation Coordinator

### **Dylan Terry**

Partnership Development Director

### **Austin Walker**

Partnership Activation Coordinator

### **Dane Hayden**

Partnership Development Manager

## TICKETS

### **Dave Walkovic**

Director of Ticket Sales

### **Erica Thompson**

Business Development Specialist

### **Patrick Hynes**

Ticket Operations Coordinator

### **Kobey Jones**

Membership Experience Specialist

### **Nick Ross**

Business Development Specialist

### **Nick Leming**

Business Development Specialist

### **Margot Ricks**

Ticket Operations Assistant

### **Evan Alvarez**

Business Intelligence Manager

### **Katie Cook**

Group Sales Specialist

### **Breckan Austin**

Ticket Sales Representative

### **Jaime Holdcroft**

Group Sales Specialist

### **Cameron Short**

Ticket Sales Representative

## MARKETING & COMMUNICATIONS

### **Jonathan Lintner**

Vice President of Communications

### **Logan Agin**

Communications Manager

### **Rachel Regenauer**

Senior Graphic Designer

### **Sarah Nollner**

Sr. Director of Marketing

### **Haley Simpson**

Communications Manager

### **Kayla Worden**

Graphic Designer

### **Jeff Greer**

Communications Director

### **Zac Cahill**

Creative Content Producer

### **Stephanie Burdorf**

Community Engagement Coordinator

### **Will Carlon**

Creative Content Producer

### **Lauren Deel**

Marketing Coordinator

# Executive Bios

---



## John Neace

*CHAIRMAN & CEO*

John Neace has served as the chairman of the Soccer Holdings LLC Board of Directors for three years after serving as a member of the organization's ownership and board of managers since Louisville City FC's inception in 2014.

Neace exemplifies the qualities of a true entrepreneur. He has demonstrated his persistence and independence of spirit early, when, after growing up in West Newport with his mother and two siblings, Neace put himself through college at Northern Kentucky University and earned his MPA at Xavier University. After that, he built one of the top insurance agencies in the United States, growing his agency from zero revenue to more than \$100 million in just under 20 years.

In addition to his insurance success, Neace demonstrated a willingness to take risks by simultaneously building other businesses, including Talon Logistics, NB Develop, GC International, Old 502 Winery, Falls City Beer and Allterrain Paving & Construction, and franchising businesses Ashley Furniture and 1-800-GOT-JUNK, among others. Excluding insurance, Neace's companies average north of \$100 million in annual sales.



# Lynn Family Stadium

---

Lynn Family Stadium in Louisville, Ky., is the largest soccer-specific stadium in the region with seating locations for 11,600 fans and a capacity of 15,304.

Home to Louisville City FC of the USL Championship and the NWSL's Racing Louisville FC, the stadium boasts 18 luxury suites, premium seating amenities like club and loge seats along with ledge tables, and a massive safe-standing supporter section.

The venue, owned by Soccer Holdings, LLC, and managed by ASM Global, is also available for concerts, festivals and other community events. It has already been bestowed Greater Louisville Inc.'s Silver Fleur-De-Lis Award, named Business First Louisville's Commercial Real Estate Deal of the Year and nominated for "Stadium of the Year" by StadiumDB.



# Lynn Family Sports Vision & Training Center

---

Soccer Holdings, LLC — the parent company of Louisville City FC and Racing Louisville FC — has collaborated again with the renowned Dr. Mark and Cindy Lynn and family on a partnership extending well beyond naming rights for the clubs' training facility.

Louisville's professional soccer teams and the Lynns operate side by side at what's now known as the Lynn Family Sports Vision & Training Center. In addition to housing day-to-day operations for LouCity, Racing and their back-office staff, the facility offers the same array of services to the community used to keep professional soccer stars at their peaks.

LouCity and Racing moved into the Lynn Family Sports Vision & Training Center, a privately financed, \$15 million project in July of 2021. The building includes customized locker rooms for both clubs, a weight room, dining hall, media/film room and several fields, both grass for the pros and state-of-the-art turf used for the youth academy, camps, clinics and community events.

Located at 801 Edith Road, ground was broken Aug. 4, 2020, on the facility, which was built by AML Construction and operated by ASM Global.



# 2023 Technical Staff

---



## **Kim Björkegren**

### *HEAD COACH*

A native of Sweden in his 16th year coaching, Björkegren is in his second year as Racing's head coach. The 41-year-old led Racing to a ninth-place finish in 2022, improving the team's points-per-game output over the club's first year of existence.

Prior to Louisville, Björkegren led Cyprus's Apollon Ladies FC to an undefeated season before being named Racing's coach on Dec. 9, 2021. Apollon Ladies took 64 of a possible 66 points and advanced to the UEFA Women's Champions League's second round, earning Björkegren Cyprus's coach of the year award.

Björkegren coached in China and Sweden before his time in Cyprus, winning the Swedish Damallsvenskan and reaching the Champions League quarterfinals in 2017 with Linköpings FC.

A goalkeeper as a player, Björkegren's playing career ended prematurely because of an injury at 23. He took a two-year coaching course to move on to his next calling, initially leading fourth division Karle IF's men's side in his hometown of Linköping, Sweden. His first women's coaching job was as the head coach for Swedish club



## **Bev Yanez**

### *ASSISTANT COACH*

Yanez joined Racing after two years as an assistant at NJ/NY Gotham FC, where she helped the team reach the 2021 NWSL Challenge Cup final and the 2021 playoffs. The former NWSL Best XI selection and two-time NWSL Shield winner as a player will work closely with Racing players on individual development and serve as the top lieutenant on head coach Kim Björkegren's staff.

Before her coaching career, Yanez was a standout midfielder and forward in Australia, Finland, Japan and the U.S., including six seasons with the club now known as OL Reign. Yanez helped OL Reign win back-to-back NWSL Shields and reach two NWSL finals, tallying 25 goals and nine assists in 123 appearances. She was a Best XI selection and MVP finalist in 2015.

In addition to her two years with Gotham as a coach, Yanez has worked as an assistant for the U-15 U.S. Soccer Youth National Team. Before moving to Gotham, she coached youth soccer at the club level, with stints at the OL Reign academy as well as the Juventus Academy and COPA Soccer Training Center in California.



## **Sergio Gonzalez**

### *GOALKEEPERS COACH*

Sergio Gonzalez enters his third year as Racing's goalkeepers coach after a stint as Indiana University's women's associate head coach. He boasts more than two decades of coaching experience, including collegiate stops at Dayton, Slippery Rock, NJIT and Ohio State. Internationally, he has also coached goalkeepers for the U-16 and U-17 national teams.

# Support Staff

---

## **Julie Twaddle**

High Performance Coach

## **Caitlyn Milby**

Director of Operations

## **Tara Condon**

Head Athletic Trainer

## **Sarah Kanuch**

Head Equipment Manager

## **Isabelle Clarke**

Assistant Athletic Trainer

# Racing Louisville FC TV/Radio Roster



**KATIE LUND**  
#1 | GK | 6-1



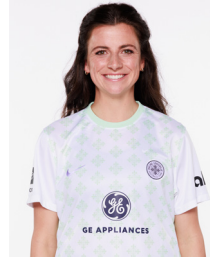
**LAUREN MILLIET**  
#2 | MF | 5-1



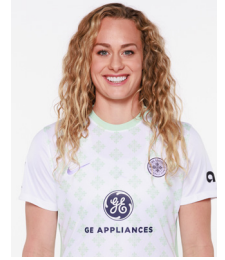
**ZANETA WYNE**  
#3 | D | 5-6



**ELLI PIKKUJÄMSÄ**  
#4 | D | 5-8



**PAIGE MONAGHAN**  
#5 | D | 5-8



**JAE LIN HOWELL**  
#6 | MF | 5-8



**SAVANNAH DeMELO**  
#7 | MF | 5-5



**ARY BORGES**  
#8 | MF | 5-4



**KAYLA FISCHER**  
#9 | MF | 5-9



**NADIA NADIM**  
#10 | F | 5-9



**THEMBI KGATLANA**  
#11 | F | 5-1



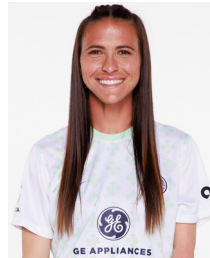
**EMINA EKIC**  
#13 | F | 5-4



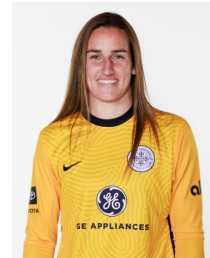
**JESS McDONALD**  
#14 | F | 6-0



**JULIA LESTER**  
#15 | D | 5-4



**CARSON PICKETT**  
#16 | D | 5-9



**HILLARY BEALL**  
#18 | GK | 5-11



**ABBY ERCEG**  
#20 | D | 5-10



**PARKER GOINS**  
#21 | F | 5-10



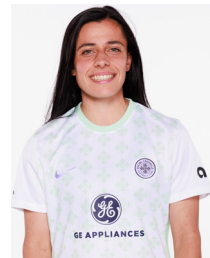
**KIRSTEN DAVIS**  
#22 | F | 5-9



**JORDYN BLOOMER**  
#24 | GK | 5-8



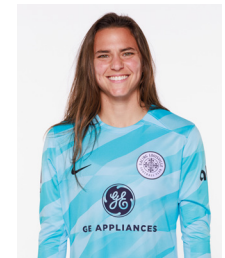
**REBECCA HOLLOWAY**  
#25 | D | 5-6



**ALEX CHIDIAC**  
#27 | MF | 5-3



**UCHENNA KANU**  
#29 | F | 5-8



**KELSEY DAUGHERTY**  
#31 | GK | 5-9



**SATARA MURRAY**  
#44 | D | 5-8



**WANG SHUANG**  
#77 | MF | 5-5



**RILEY PARKER**  
F | 5-7

# Numerical Roster

#	NAME	POS.	PRONUNCIATION	NATIONALITY	PREVIOUS TEAM
1	<b>LUND, KATIE</b>	GK	LUN-d	USA	WASHINGTON SPIRIT (NWSL)
2	<b>MILLIET, LAUREN</b>	MF	Mill-A	USA	NORTH CAROLINA COURAGE (NWSL)
3	<b>WYNE, ZANETA</b>	D	ZUH-netta WINE	USA	WEST HAM UNITED (FA WSL)
4	<b>PIKKUJÄMSÄ, ELLI</b>	D	Pick-oo-YAWM-suh	Finland	KIF ÖREBRO (SWEDEN)
5	<b>MONAGHAN, PAIGE</b>	D	Mawn-uh-hann	USA	NJ/NY GOTHAM FC (NWSL)
6	<b>HOWELL, JAE LIN</b>	MF	HOW-wool	USA	FLORIDA STATE (NCAA)
7	<b>DeMELO, SAVANNAH</b>	MF	Duh-MEL-oh	USA	USC (NCAA)
8	<b>BORGES, ARY</b>	MF	ARE-ee BOR-zhiss	Brazil	PALMEIRAS (BRAZIL)
9	<b>FISCHER, KAYLA</b>	F		USA	OHIO STATE (NCAA)
10	<b>NADIM, NADIA</b>	F	Nuh-DEEM	Denmark	PSG (FRANCE)
11	<b>KGATLANA, THEM BI</b>	F	TEM-bee Cot-LAWN-uh	S. Africa	ATLÉTICO MADRID (SPAIN)
12	<b>MALHAM, TAYLOR</b>	MF	MAL-um	USA	ARKANSAS (NCAA)
13	<b>EKIC, EMINA</b>	F	Uh-MEEN-uh ECK-itch	USA	LOUISVILLE (NCAA)
14	<b>McDONALD, JESS</b>	F		USA	NORTH CAROLINA COURAGE (NWSL)
15	<b>LESTER, JULIA</b>	D		USA	APOLLON LADIES (CYPRUS)
16	<b>PICKETT, CARSON</b>	D	PICK-it	USA	NORTH CAROLINA COURAGE (NWSL)
18	<b>BEALL, HILLARY</b>	GK	Beel	USA	MICHIGAN (NCAA)
20	<b>ERCEG, ABBY</b>	D	URR-seg	New Zealand	NORTH CAROLINA COURAGE (NWSL)
21	<b>GOINS, PARKER</b>	F	GO-ins	USA	ARKANSAS (NCAA)
22	<b>DAVIS, KIRSTEN</b>	F	KERR-stin	USA	TEXAS TECH (NCAA)
24	<b>BLOOMER, JORDYN</b>	GK		USA	WISCONSIN (NCAA)
25	<b>HOLLOWAY, REBECCA</b>	D		N. Ireland	BIRMINGHAM CITY FC (FA WSL)
27	<b>CHIDIAC, ALEX</b>	MF	CHID-ee-ack	Australia	MELBOURNE VICTORY (AUSTRALIA)
29	<b>KANU, UCHENNA</b>	F	Oo-CHEN-uh KA-noo	Nigeria	UANL TIGRES (MEXICO)
31	<b>DAUGHERTY, KELSEY</b>	GK	DOOR-uh-tee	USA	DJURGÅRDENS IF (SWEDEN)
44	<b>MURRAY, SATARA</b>	D	SUH-tar-uh	Jamaica	BRISTOL CITY FC (FA W CHAMPIONSHIP)
77	<b>WANG, SHUANG</b>	MF	Wong Shwong	China	WUHAN JIANGHAN UNIVERSITY FC (CHINA)
	<b>PARKER, RILEY</b>	F		USA	ALABAMA (NCAA)

# Alphabetical Roster

<b>NAME</b>	<b>#</b>	<b>POS.</b>	<b>HT.</b>	<b>HOMETOWN</b>	<b>COLLEGE</b>	<b>DoB</b>
<b>Beall, Hillary</b>	18	GK	5'11"	Laguna Beach, Calif	Michigan	1/27/1999
<b>Bloomer, Jordyn</b>	24	GK	5'8"	Hartland, Wis.	Wisconsin	10/14/1997
<b>Borges, Ary</b>	8	MF	5'4"	São Paulo, Brazil		12/28/1999
<b>Chidiac, Alex</b>	27	MF	5'3"	Sydney, Australia		1/15/1999
<b>Daugherty, Kelsey</b>	31	GK	5'9"	Keenesaw, Ga,	UAB	12/31/1996
<b>Davis, Kirsten</b>	22	F	5'9"	St. Louis	Texas Tech	9/8/1998
<b>DeMelo, Savannah</b>	7	MF	5'5"	Bellflower, Calif.	USC	3/26/1998
<b>Ekic, Emina</b>	13	F	5'4"	Louisville, Ky.	Louisville	6/6/1999
<b>Erceg, Abby</b>	20	D	5'10"	Whangerei, New Zealand		11/20/1989
<b>Fischer, Kayla</b>	9	MF	5'8"	Kent, Ohio	Ohio State	1/5/2000
<b>Goins, Parker</b>	21	F	5'10"	Broken Arrow, Okla.	Arkansas	12/8/1998
<b>Holloway, Rebecca</b>	25	D	5'6"	Nailsea, England	Cumberland	8/25/1995
<b>Howell, Jaelin</b>	6	MF	5'8"	Lone Tree Colo.	Florida State	11/29/1999
<b>Lester, Julia</b>	15	D	5'4"	Tampa, Fl.	Florida	1/16/1998
<b>Lund, Katie</b>	23	GK	6'1"	Plano, Texas	Arkansas	11/27/1996
<b>Kanu, Uchenna</b>		F	5'8"	Abia, Nigeria	Southeastern	6/20/1997
<b>Kgatlana, Thembi</b>	11	F	5'7"	Mohlakeng, South Africa		5/2/1996
<b>Malham, Taylor</b>	12	MF	5'10"	Broken Arrow, Okla.	Arkansas	5/20/1999
<b>McDonald, Jess</b>	14	F	6'0"	Phoenix, Ariz.	UNC	2/28/1988
<b>Milliet, Lauren</b>	2	MF	5'7"	Durango, Colo.	Colorado College	12/1/1996
<b>Monaghan, Paige</b>	5	D	5'8"	Roxbury, NJ	Butler	11/13/1996
<b>Murray, Satara</b>	44	D	5'8"	Auston, Texas	UNC	7/1/1993
<b>Nadim, Nadia</b>	10	F	5'9"	Herat, Afghanistan	Aarhus University	1/2/1988
<b>Parker, Riley</b>		F	5'7"	Flower Mound, Texas	Alabama	3/31/2000
<b>Pickett, Carson</b>	16	D	5'8"	Orange Park, Fla.	Florida State	9/15/1993
<b>Pikkujämsä, Elli</b>	4	D	5'8"	Turku, Finland		10/24/1999
<b>Wang, Shuang</b>	77	MF	5'5"	Wuhan, China		1/23/1995



# #1 Katie Lund

**PRONUNCIATION:** LUN-d

**POSITION:** Goalkeeper

**HEIGHT:** 6-foot-1

**DOB:** Nov. 27, 1996

**AGE:** 26

**HOMETOWN:** Plano, Texas

**CITIZENSHIP:** USA

**COLLEGE:** University of Arkansas

**PREVIOUS TEAM:** Washington Spirit (NWSL)

**ACQUIRED:** 5th pick in 2020 NWSL Expansion Draft, signed a contract on 1/20/2023 through 2025.

## 2022:

Lund started all 22 regular-season matches en route to breaking the NWSL single-season save record with 112 saves. The goalkeeper kept six clean sheets, boasting a 76% save percentage. She also tied the single-game saves record of 12 in Racing's 1-1 draw with OL Reign in August.

## 2021:

Lund made her professional debut off the bench, becoming the hero of Racing's win over FC Bayern Munich in The Women's Cup final. Lund made four penalty kick stops and scored the trophy-winning kick in a dramatic shootout. She went on to make her first NWSL start Oct. 6 against the North Carolina Courage and took over the starting job between the posts toward the end of the season, tallying 16 saves as her side went 1-1-2.

## Before Racing Louisville FC:

Lund spent her first three seasons at Texas Christian University before transferring to Arkansas for her senior year. In her final season, she started all 23 matches for the Razorbacks and posted 11 shutouts. She led the SEC in save percentage (0.871) and was named 2019 All SEC-Second Team and All-Southeast Region Second Team. Lund signed with the Washington Spirit in February of 2020.





## #2 Lauren Milliet

**PRONUNCIATION:** Mill-A

**POSITION:** Midfielder

**HEIGHT:** 5-foot-1

**DOB:** Dec. 1, 1996

**AGE:** 26

**HOMETOWN:** Durango, Colorado

**CITIZENSHIP:** USA

**COLLEGE:** Colorado College

**PREVIOUS TEAM:** North Carolina Courage (NWSL)

**ACQUIRED:** 6th pick in 2020 NWSL Expansion Draft, signed a contract on 9/8/2022 through 2025.

### 2022:

For the second straight year, Milliet was the only Racing player to make an appearance in every Challenge Cup and regular-season match. She scored her first professional goal in Racing's Challenge Cup win over the Kansas City Current, then got her first regular-season goal in the club's road victory at NJ/NY Gotham FC.

### 2021:

In the club's inaugural season, Milliet was the only player to see game action in all 24 regular season matches. Earning 19 starts, the midfielder recorded 13 shots with three going on target.

### Before Racing Louisville FC:

After being selected 14th by the North Carolina Courage in the 2019 NWSL Draft, Milliet made two appearances in her rookie season. She went on to make four appearances in both the 2020 Challenge Cup and Fall Series. Milliet earned her first career assist against the Orlando Pride to close out 2020.



## #3 Zaneta Wyne

**PRONUNCIATION:** ZUH-netta WINE

**POSITION:** Defender

**HEIGHT:** 5-foot-6

**DOB:** Aug. 3, 1990

**AGE:** 32

**HOMETOWN:** Newport Beach, California

**CITIZENSHIP:** USA

**COLLEGE:** University of New Mexico

**PREVIOUS TEAM:** West Ham United (FA WSL)

**ACQUIRED:** Signed on 7/27/2022 to a contract through 2023 a National Team Replacement player.

### 2022:

Joining Racing in the summer as a National Team Replacement Player, the defender earned a contract with the club and went on to play eight matches, making three starts.

### Before Racing Louisville:

Wyne, 31, became a free agent after the 2021-2022 FA Women's Super League season. The versatile University of New Mexico product, who can play fullback or midfielder, made 18 appearances last season with London-based West Ham United, which finished sixth in England's top-flight league.

The American-French dual citizen is well-traveled in her career, playing for top-tier clubs in Cyprus, Finland, Iceland, Norway and Scotland in addition to her two stints in England. She won the Cypriot league and experienced the UEFA Women's Champions League in a one-season stint with Apollon Ladies, coincidentally also the most-recent stop for coach Kim Björkegren before he took the reins at Racing. Wyne played in Cyprus four years ahead of Björkegren's time.



## #4 Elli Pikkujämsä

**PRONUNCIATION:** Pick-oo-YAWM-suh

**POSITION:** Defender

**HEIGHT:** 5-foot-8

**DOB:** Oct. 24, 1999

**AGE:** 23

**HOMETOWN:** Turku, Finland

**CITIZENSHIP:** Finland

**PREVIOUS TEAM:** KIF Örebro (Sweden)

**ACQUIRED:** Signed on 12/9/2022 through the 2025 season.

### Before Racing Louisville:

Pikkujämsä joins Racing after spending the past three years with Swedish club KIF Örebro, which plays in the fiercely competitive Damallsvenskan. Pikkujämsä scored six goals in 27 appearances this past season, helping Örebro qualify for the group stage of the ongoing Swedish Cup and finish ninth in the 2022 Damallsvenskan.

### International:

Pikkujämsä is a young star on the Finland national team, with 20 appearances, including three starts in this past summer's UEFA Women's Euro 2022





## #5 Paige Monaghan

**PRONUNCIATION:** Mawn-uh-hann

**POSITION:** Defender

**HEIGHT:** 5-foot-8

**DOB:** Nov. 13, 1996

**AGE:** 26

**HOMETOWN:** Roxbury, New Jersey

**CITIZENSHIP:** USA

**COLLEGE:** Butler University

**PREVIOUS TEAM:** NJ/NY Gotham FC (NWSL)

**ACQUIRED:** Trade with NJ/NY Gotham FC on 1/12/2023. Signed on 2/6/2023 to a contract through 2025.

### Before Racing Louisville:

Monaghan grew up in New Jersey and attended Butler University before Sky Blue FC — now known as Gotham FC — selected her 10th overall in the 2019 NWSL Draft. She appeared in all 22 of Gotham's regular season games in 2022, scoring three goals.



## #6 Jaelin Howell

**PRONUNCIATION:** HOW-wool

**POSITION:** Midfielder

**HEIGHT:** 5-foot-8

**DOB:** Nov. 21, 1999

**AGE:** 23

**HOMETOWN:** Lone Tree, Colorado

**CITIZENSHIP:** USA

**COLLEGE:** Florida State University

**ACQUIRED:** 2nd pick in the 2022 NWSL Draft. Signed on 1/10/2023 to a contract through 2025.

### 2022:

Howell started all 22 matches in her rookie season, logging the third-most minutes of any field player on the team. She scored her first NWSL goal in Racing's Challenge Cup finale against the Houston Dash. Howell also logged two assists, including one to fellow-rookie Kirsten Davis in the club's 3-1 win at Angel City FC, and finished sixth in fouls won in the NWSL.

### Before Racing Louisville:

Howell made 90 career Florida State appearances, scored 14 goals and tallied just as many assists there, with her honors including back-to-back ACC Midfielder of the Year awards from 2020-2021.

Howell finished her collegiate career by becoming only the sixth women's player to win the Hermann Trophy in consecutive years, joining Mia Hamm (1992-1993), Cindy Parlow (1997-1998), Christine Sinclair (2004-2005), Morgan Brian (2013-2014) and Catarina Macario (2018-2019).

### International:

Howell has five caps for the Stars & Stripes. She scored her first international goal against Uzbekistan in April, earning a spot on ESPN SportsCenter's Top 10 plays.



## #7 Savannah DeMelo

**PRONUNCIATION:** Duh-MEL-oh

**POSITION:** Midfielder

**HEIGHT:** 5-foot-5

**DOB:** March 26, 1998

**AGE:** 24

**HOMETOWN:** Bellflower, California

**CITIZENSHIP:** USA

**COLLEGE:** University of Southern California

**ACQUIRED:** 4th pick in the 2022 NWSL Draft. Signed on 9/18/2022 to a contract through 2025.

### 2022:

As a rookie, DeMelo started in all 22 regular-season matches, logging the most minutes of any Louisville field player and finishing first the NWSL in chances created and fouls won. She scored her professional goal on a free kick against the San Diego Wave. The midfielder went on score four times, including a league-best two off a direct free kick, with two assists. DeMelo was named to the NWSL Team of the Month for May and Rookie of the Month of July.

### Before Racing Louisville FC:

During a collegiate career interrupted by an Achilles injury, DeMelo still managed 75 appearances and helped USC to postseason appearances each year she was in the pitch (2017-2018, 2020-2021). Along the way she four times received All-Pac-12 honors and was recognized in 2018 as an All-American.

The Bellflower, Calif., native DeMelo returned to pre-injury form as a senior in 2021, scoring 4 goals and numbering 7 assists while starting all 20 of the Trojans' games. USC finished second in the Pac-12 with an 8-1-2 record in league play.

### International:

Still uncapped with the USWNT, DeMelo earned her first senior team call-ups in September and October 2022. She was a member of both the 2016 and 2018 U-20 World Cup squads in Papua New Guinea and France. She has also represented the U.S. at the U-14, U-15 and U-18 levels.



## #8 Ary Borges

**PRONUNCIATION:** ARE-ee BOR-zhiss

**POSITION:** Midfielder

**HEIGHT:** 5-foot-4

**DOB:** Dec. 28, 1999

**AGE:** 23

**HOMETOWN:** São Paulo, Brazil

**CITIZENSHIP:** Brazil

**PREVIOUS TEAM:** Palmeiras (Brazil)

**ACQUIRED:** Signed 12/23/2022 to a contract through the 2025 season.

### Before Racing Louisville:

Borges scored 34 goals in 83 appearances over three years with Palmeiras. She totaled 15 goals in 28 appearances this year, leading her team to win the group stage of the 2022 Campeonato Brasileiro de Futebol Feminino Serie A1 and a semifinal finish in the knockout tournament. Her goals in the semifinal and final pushed Palmeiras to the Copa Libertadores trophy in October.

### International:

One of the young stars for Brazil's next generation of talent, Borges has four goals in 22 national team games, including two scores in this summer's Copa America Femenina. Her game-winning semifinal goal helped Brazil beat Paraguay and eventually claim its fourth consecutive Copa America trophy.



## #9 Kayla Fischer

**POSITION:** Midfielder

**HEIGHT:** 5-foot-8

**DOB:** Jan. 5, 2000

**AGE:** 23

**HOMETOWN:** Kent, Ohio

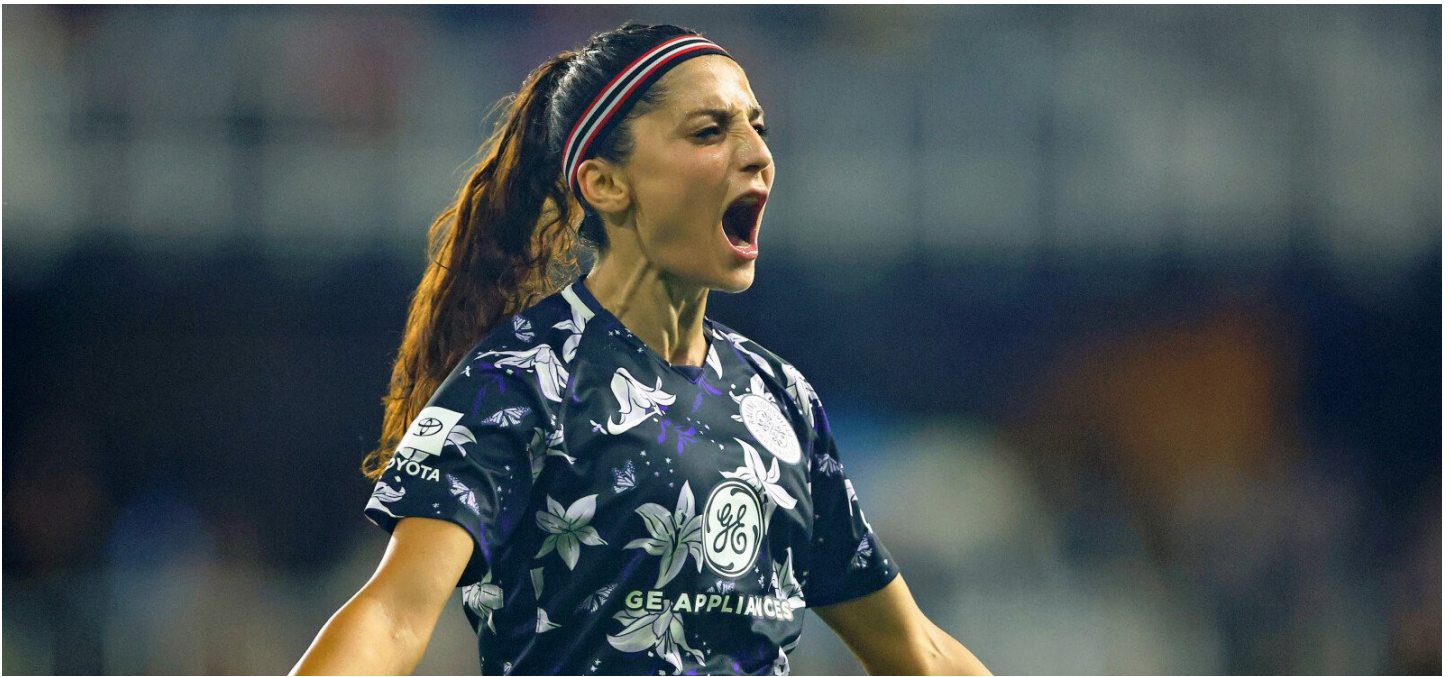
**CITIZENSHIP:** USA

**COLLEGE:** Ohio State University

**ACQUIRED:** 16th pick in the 2023 NWSL Draft. Signed through the 2024 season on 3/17/2021.

### Before Racing Louisville:

Racing's first pick in this year's draft, Fischer left her mark at Ohio State, tallying 28 goals and 20 assists in five seasons with the Buckeyes. She was a two-time All-Big Ten selection and was named to the Big Ten's All-Freshman team in 2018.



## #10 Nadia Nadim

**PRONUNCIATION:** Nuh-DEEM

**POSITION:** Forward

**HEIGHT:** 5-foot-9

**DOB:** Jan. 2, 1988

**AGE:** 33

**HOMETOWN:** Herat Afghanistan

**CITIZENSHIP:** Denmark

**PREVIOUS TEAM:** PSG (France)

**ACQUIRED:** Signed 6/9/2021 to a contract through the 2023 season.

### 2022:

Returning from an ACL injury in June, Nadim netted six goals in only 11 appearances. The forward scored the club's first brace in a comeback draw against the Washington Spirit. Nadim was sidelined with another ACL injury in the club's road match against her former club, the Portland Thorns.

### 2021:

Nadim provided a spark to Racing's attack as a massive midseason signing. After making her debut on July 25 against the Washington Spirit, she scored three goals and tallied one assist. Nadim was also recognized on the NWSL Team of the Month for August. But having made eight appearances, she went on the season-ending injury list having torn her ACL in a Sept. 10 game at the Orlando Pride. Nadim is working to be back for the 2022 season.

### Before Racing Louisville FC:

Known as one of the world's most prolific scorers and humanitarian athletes, Nadim arrives to Louisville after two seasons with Paris Saint-Germain, where during the 2021

campaign she numbered 10 goals and 4 assists in helping the club to its first Division 1 Féminine title. In recent years, she also starred for NWSL power Portland Thorns FC (2016-2017) and England's Manchester City (2018). Nadim made her mark in what's considered the world's top women's soccer league, going on to score a team-leading nine goals for Portland as it won the 2016 NWSL shield.

In 2022, Nadim became Dr. Nadim after finishing her medical degree at Aarhus University.

### International:

Nadim and her family fled Afghanistan when she was a child and eventually found asylum in Denmark. There, she discovered soccer and became a citizen, and she now represents the Danish national team. Nadim was voted Denmark's Player of the Year in 2016 and 2017. She earned her 100th international cap in June before making Denmark's 2022 European Championship roster.



## #11 Thembu Kgatlana

**PRONUNCIATION:** TEM-bee Cot-LAWN-uh

**POSITION:** Forward

**HEIGHT:** 5-foot-1

**DOB:** May 2, 1996

**AGE:** 26

**HOMETOWN:** Mohlakeng, South Africa

**CITIZENSHIP:** South Africa

**PREVIOUS TEAM:** Atlético Madrid (Spain)

**ACQUIRED:** Signed 7/6/2022 to a contract through the 2023 season, with an option for 2024.

### Before Racing Louisville FC:

Kgatlana played previously in the NWSL for the Houston Dash and has also represented clubs in China, Portugal and Spain. She joins Racing after a year with four-time Spanish champion Atlético Madrid, where she made 28 appearances and nine starts across all competitions. Kgatlana tallied seven goals and three assists in helping the club finish fourth in Spain's Primera División and reach the final of the Supercopa Femenina.

Previously in the NWSL, Kgatlana played in 16 matches for the Houston Dash in 2018, scoring twice. She moved to Beijing BG Phoenix's squad in 2019, coincidentally a year after Björkegren coached there, netting six goals in 10 appearances. She briefly played for Portuguese club Benfica in 2020, helping the Lisbon-based team qualify for its first UEFA Women's Champions League.

### International:

A national team standout, Kgatlana has 22 goals in 63 appearances for South Africa, including her country's first-ever World Cup goal, which she scored against Spain in 2019. She debuted for South Africa's senior team as a high school senior at the 2014 Africa Women Cup of Nations and twice started as a 20-year-old at the 2016 Olympics.

In 2018, Kgatlana led her team to the Africa Women Cup of Nations final, earning player of the tournament honors for the runner-up.



## #13 Emina Ekic

**PRONUNCIATION:** Uh-MEEN-uh ECK-itch

**POSITION:** Forward

**HEIGHT:** 5-foot-4

**DOB:** June 6, 1999

**AGE:** 23

**HOMETOWN:** Louisville, Kentucky

**CITIZENSHIP:** USA

**COLLEGE:** University of Louisville

**ACQUIRED:** 5th pick in the 2021 NWSL Draft, signed to a contract through the 2022 season, with an option that was exercised for 2023.

### 2022:

Ekic appeared in 19 regular-season matches in her second year in the league, starting five. She found the back of the net twice in the regular season and once in the Challenge Cup. Her free-kick goal in the preseason tournament proved to be the equalizer against the Chicago Red Stars.

### 2021:

Scoring a goal and tallying an assist in Racing's first-ever win on May 21 against the Washington Spirit, Ekic was named the NWSL's Player of the Week. The forward went on to make 15 appearances and three starts over the course of her rookie season.

### Before Racing Louisville FC:

The 2020 ACC Offensive Player of the Year, Ekic is the first Cardinals player ever taken in the NWSL Draft. She left UofL having tallied the fourth-most goals in program history with 29 and second-most assists with 19. The Louisville native, who attended duPont Manual High School, played a part in 10 of the Cardinals' 11 goals in 2020 with seven goals and three assists. Ekic also led UofL in scoring in 2017 and 2019, with seven of her goals game winners. She quickly established herself at the college level, named ACC Co-Freshman of the Year after claiming numerous high school accolades, including Kentucky Gatorade Player of the Year in 2015 and 2016.





## #14 Jess McDonald

**POSITION:** Forward

**HEIGHT:** 6-foot

**DOB:** Feb. 28, 1988

**AGE:** 35

**HOMETOWN:** Phoenix, Arizona

**CITIZENSHIP:** USA

**COLLEGE:** University of North Carolina

**PREVIOUS TEAM:** North Carolina Courage (NWSL)

**ACQUIRED:** Traded with North Carolina on 12/17/2021, signed to a contract through the 2023 season on 1/28/2022.

### 2022:

McDonald appeared in all 22 regular-season matches in her first year with Racing, starting 19. Her three goals and four assists all were critical in Racing earning points, including a stoppage-time game-winner in Racing's regular-season finale against the Kansas City Current.

### Before Racing Louisville FC:

McDonald had been with the NC Courage organization since 2016, when it was then located in Western New York. She finished schooling at the University of North Carolina and has been well traveled as a professional, with Racing marking her record seventh NWSL club.

Along the way, McDonald rose to rank first all-time in NWSL assists (27) and fourth in goals (51). She helped the Courage claim three shields (2017-2019) and a trio of NWSL Championship wins (2016, 2018 and 2019). Her resume includes a Championship MVP award from the 2018 final.

She has one son, Jeremiah.

### International:

McDonald broke into the U.S. Women's National Team in 2018, scoring a game winner against Portugal in her first appearance. The next year, she made the final 23-player roster for the 2019 FIFA Women's World Cup eventually won by the U.S.



## #15 Julia Lester

**POSITION:** Defender

**HEIGHT:** 5-foot-4

**DOB:** Jan. 16, 1998

**AGE:** 25

**HOMETOWN:** Tampa, Florida

**CITIZENSHIP:** USA

**COLLEGE:** University of Florida

**PREVIOUS TEAM:** Apollon Ladies (Cyprus)

**ACQUIRED:** Signed 2/23/2022 to a contract through the 2023 season, with an option for 2024.

### 2022:

Playing at both outside and center back, Lester made 20 appearances, including 17 starts in her first season in lavender.

### Before Racing Louisville:

Over the course of two seasons playing for coach Kim Björkegren at their former club, Lester worked on a defensive unit that conceded only 14 goals in 31 Cypriot First Division matches. She made the league's Best XI in 2021.

Lester appeared in six UEFA Women's Champions League games for Apollon Ladies, which also won its most recent domestic Super Cup and advanced to its league cup final with Lester in the squad.



## #16 Carson Pickett

**PRONUNCIATION:** PICK-it

**POSITION:** Defender

**HEIGHT:** 5-foot-8

**DOB:** Sept. 15, 1993

**AGE:** 29

**HOMETOWN:** Orange Park, Florida

**CITIZENSHIP:** USA

**COLLEGE:** Florida State University

**Previous Team:** North Carolina Courage (NWSL)

**ACQUIRED:** Traded with North Carolina on 1/23/2023. Signed through 2025 on 3/13/2023.

### Before Racing Louisville FC:

Pickett, a left back who was the fourth pick in the 2016 NWSL Draft, is a back-to-back Best XI selection over the past two seasons and won a national championship in 2014 with Florida State. The Florida native led the NWSL in assists this past season with six, a year after tying for second in the league with five.

In all, Pickett has one goal and 16 assists in 130 NWSL appearances with the Courage, OL Reign and Orlando Pride and has regularly ranked among the league leaders in chances created and interceptions, among other areas.

### International:

She made her U.S. Women's National Team debut in June 2022, appearing in two matches.



## #18 Hillary Beall

**PRONUNCIATION:** Beel

**POSITION:** Goalkeeper

**HEIGHT:** 5-foot-11

**DOB:** Jan. 27, 1999

**AGE:** 23

**HOMETOWN:** Laguna Beach, California

**CITIZENSHIP:** USA

**COLLEGE:** University of Michigan

**ACQUIRED:** Signed 2/10/2022 to a contract through 2022 with an option that was exercised for the 2023 season.

### 2022:

The rookie goalkeeper did not see NWSL game action. She was loaned to Australian club Western United FC following the 2022 season.

### Before Racing Louisville FC:

Beall numbered 285 saves and a 0.797 save percentage at Michigan. During her fifth-year senior season last fall the Wolverines advanced to the NCAA tournament's quarterfinals before falling to eventual national champion Florida State in overtime.

A notable final college season followed a standout summer for Beall, who was named 2021 All-United Women's Soccer Goalkeeper of the Year after helping SC Blue Heat to a UWS National Championship in the national pro-am league.

### International:

While wearing red, white and blue, Beall was most recently a member of the 2018 U-20 World Cup squad in France. There, she played alongside eventual Racing teammates Savannah DeMelo and Jaelin Howell.



## #20 Abby Erceg

**PRONUNCIATION:** URR-seg

**POSITION:** Defender

**HEIGHT:** 5-foot-10

**DOB:** Nov. 20, 1989

**AGE:** 32

**HOMETOWN:** Whangerei, New Zealand

**CITIZENSHIP:** New Zealand

**PREVIOUS TEAM:** North Carolina Courage (NWSL)

**ACQUIRED:** Traded with North Carolina on 1/23/2023.

### Before Racing Louisville FC:

Erceg, a center back with 160 NWSL and Challenge Cup appearances, is one of the most accomplished players in league history. She won three regular-season NWSL Shields, three NWSL Championships and an NWSL Challenge Cup with the Western New York Flash and the Courage.

In eight-plus years in the league, the New Zealander has claimed the 2018 NWSL Defender of the Year award as well as 2018 Best XI and 2017 and 2019 Second XI honors. She was also named to the 2020 Challenge Cup Best XI.

### International:

On the international stage, Erceg made 146 appearances for the New Zealand national team, scoring six goals and leading the Football Ferns to four World Cups and four Olympic Games. She was first New Zealander to reach 100 caps for either the men's or women's national teams.



## #21 Parker Goins

**PRONUNCIATION:** GO-ins

**POSITION:** Forward

**HEIGHT:** 5-foot-10

**DOB:** Dec. 8, 1998

**AGE:** 24

**HOMETOWN:** Broken Arrow, Oklahoma

**CITIZENSHIP:** USA

**COLLEGE:** University of Arkansas

**ACQUIRED:** 31st pick in the 2021 NWSL Draft, signed 3/15/2022 to a contract through 2022 with an option that was exercised for the 2023 season.

### 2022:

As a rookie, Goins made seven appearances off the bench.

### Before Racing Louisville:

Goins spent five standout seasons with Arkansas, where she totaled 40 goals and 38 assists in 96 appearances. She was named Southeastern Conference Midfielder of the Year and an All-American selection last season. En route to Arkansas' 2021 SEC regular season championship, Goins ranked No. 2 in assists (14) and No. 4 in goals (11) in the SEC. Goins made Racing's roster after a successful preseason trial.



## #22 Kirsten Davis

**PRONUNCIATION:** KERR-stin

**POSITION:** Forward

**HEIGHT:** 5-foot-9

**DOB:** Sept. 8, 1998

**AGE:** 24

**HOMETOWN:** St. Louis, Missouri

**CITIZENSHIP:** USA

**COLLEGE:** Texas Tech University

**ACQUIRED:** 13th pick in the 2021 NWSL Draft, signed 12/29/2021 to a contract through 2023 with an option for the 2024 season.

### 2022:

Davis made 18 appearances in her first year as a pro, including 10 starts. She found the back of the net twice in the regular season, assisting once. The forward was the only Racing player to score in the 2022 Challenge Cup, regular season and The Women's Cup tournament.

### Before Racing Louisville:

Davis, whose playing rights were acquired through the 2021 NWSL Draft, returned to college for a final season having heard her name called 13th overall. She joined Racing after a Big 12 Conference Offensive Player of the Year campaign in which she registered 14 goals and 6 assists in 19 appearances. She departs Texas Tech ranking second all-time in points (112), goals (45) and game-winners (16).

### International:

The St. Louis native has also represented the United States as a youth international at the U-18, U-19 and U-20 levels, participating in tournaments with U.S. Soccer in Honduras and Ireland.



## #24 Jordyn Bloomer

**POSITION:** Goalkeeper

**HEIGHT:** 5-foot-8

**DOB:** Oct. 14, 1997

**AGE:** 25

**HOMETOWN:** Hartland Wisconsin

**CITIZENSHIP:** USA

**COLLEGE:** University of Wisconsin

**ACQUIRED:** 26th pick in the 2022 NWSL Draft, signed 2/8/2022 to a contract through 2022 with an option that was exercised for the 2023 season.

### 2022:

The rookie goalkeeper made her professional debut in Racing's Challenge Cup finale against the Houston Dash, where she logged two saves. She did not see action during the regular season.

### Before Racing Louisville FC:

The second player at her position selected in December's draft, Bloomer was a two-time Big Ten Conference Goalkeeper of the Year at the University of Wisconsin. There, she registered a 0.65 goals-against average 0.823 save percentage.

A Hartland, Wis., native, Bloomer emerged as a serious pro prospect during her breakout 2019 season. As a junior, she received her first Big Ten Goalkeeper of the Year nod in addition to First Team All-American honors, posting a 0.53 goals-against average and 0.850 save percentage.

In 2021, as a fifth-year senior, she posted nine shutouts while helping the Badgers to the Round of 16 in the NCAA Tournament, again earning the title of Big Ten Goalkeeper of the Year.





## #25 Rebecca Holloway

**POSITION:** Defender

**HEIGHT:** 5-foot-6

**DOB:** Aug. 25, 1995

**AGE:** 26

**HOMETOWN:** Nailsea, England

**CITIZENSHIP:** Northern Ireland

**COLLEGE:** Cumberland University

**PREVIOUS TEAM:** Birmingham City (FA W Championship)

**ACQUIRED:** Signed 3/31/2022 through the 2023 season.

### 2022:

Joining Racing in May, Holloway made six appearances, including two starts for the club.

### Before Racing Louisville:

Holloway, a left-footed standout, joined Birmingham City in the summer of 2019, making more than 50 FA WSL appearances at outside back. She went the full 90 minutes for all but two matches of the 2021-2022 season before signing with Racing. Holloway honed her craft in the Bristol City Academy before attending Cumberland University, an NAIA Program in Lebanon, Tenn. With the Phoenix, Holloway was named back-to-back Mid-South Conference Player of the Year in 2017 and 2018 before joining the Nashville Rhythm, a WPSL club, in 2019.

### International:

On the international level, Holloway represents Northern Ireland, with 16 caps and three goals through October 2022. Holloway appeared in three matches, including two starts, in the Green & White Army's first European Championship.



## #27 Alex Chidiac

**PRONUNCIATION:** CHID-ee-ack

**POSITION:** Midfielder

**HEIGHT:** 5-foot-3

**DOB:** Jan. 15, 1999

**AGE:** 24

**HOMETOWN:** Sydney, Australia

**CITIZENSHIP:** Australia

**PREVIOUS TEAM:** Melbourne Victory (Australia)

**ACQUIRED:** Signed 4/4/2022 through 2022, with an option that was exercised for the 2023 season.

### 2022:

Joining Racing in May, Chidiac went on to make 18 appearances, including 14 starts. She found the back of the net twice, including the game-winning penalty against Angel City FC in September.

### Before Racing Louisville:

Chidiac signed on a free transfer after winning the A-League's Aussie Grand Final with Melbourne. She was awarded the Victory Medal, given to the team's player of the season, and was also named the players' player of the year — two prestigious club awards. Chidiac is a longtime professional who has played in her native Australia as well as Japan and Spain. She received her first senior national team call up in 2015, at 16 years old, and scored her first goal for the Matildas in a 2018 friendly against Thailand. Chidiac was also a fixture in the Australian youth national team setup, scoring 17 times in 22 appearances for the U-20 squad. Other stints professionally came with Adelaide United and Melbourne City as well as an 18-month run with Spanish giant Atletico Madrid. She scored 3 goals in 22 Madrid appearances and helped win Spain's top-flight Primera Division title in 2019, plus reached the UEFA Women's Champions League round of 16.

### International:

Through October, Chidiac made 20 appearances for Australia, including four this year. She received her first senior national team call-up in 2015 at 16 years old and scored her first goal for the Matildas in a 2018 friendly against Thailand.



## #29 Uchenna Kanu



**PRONUNCIATION:** Oo-CHEN-uh KA-noo

**POSITION:** Forward

**HEIGHT:** 5-foot-8

**DOB:** June 20, 1997

**AGE:** 25

**HOMETOWN:** Abia, Nigeria

**CITIZENSHIP:** Nigeria

**COLLEGE:** Southeastern University

**PREVIOUS TEAM:** UANL Tigres (Mexico)

**ACQUIRED:** Signed 2/2/2023 through the 2024 season with an option for 2025.

### Before Racing Louisville FC:

Kanu joins Racing after a stellar year at Tigres, where she rang up 20 goals in 30 appearances for the Monterey, Mexico-based club, helping her team claim Liga MX Femenil's Torneo Apertura trophy this past November.

Before her time in Mexico, Kanu impressed in Sweden's Damallsvenskan, tallying 22 goals in 42 matches over two years with Linköpings FC. Kanu's 17 scores in the 2021 season ranked second in the league. She also spent part of the pandemic-impacted 2019-20 season in Spain with Sevilla FC, making six appearances for the Spanish club.

### International:

Kanu has 10 goals in 12 appearances for Nigeria, including a sensational goal against the U.S. Women's National Team in a friendly last September and two more scores at the 2022 Africa Cup of Nations. Kanu represented Nigeria at the 2019 World Cup in France, starting the Round of 16 match vs. Germany after coming on as a substitute in the Super Falcons' three group-stage games, and previously played in the U-17 and U-20 World Cups as well.



# #31 Kelsey Daugherty

**PRONUNCIATION:** DOOR-uh-tee  
**POSITION:** Goalkeeper  
**HEIGHT:** 5-foot-9  
**DOB:** Dec. 31, 1996  
**AGE:** 26  
**HOMETOWN:** Keenesaw, Georgia  
**CITIZENSHIP:** USA  
**COLLEGE:** University of Alabama at Birmingham  
**PREVIOUS TEAM:** Djurgårdens IF (Sweden)  
**ACQUIRED:** Signed 8/15/2022 through the 2023 season.

## 2022:

Daugherty joined Racing in August. The goalkeeper did not make any appearances.

## Before Racing Louisville FC:

The goalkeeper made 35 appearances for Djurgårdens in Sweden's first division Damallsvenskan while accumulating 54 saves and 12 clean sheets since early 2021. Having previously played for Danish side Fortuna Hjørring in 2019, Daugherty made four UEFA Champions League appearances, registering two shutouts, before her club bowed out to eventual champion Olympique Lyon in the Round of 16. This will mark her second stint for an NWSL team after spending the 2020 Fall Series with the Chicago Red Stars.



## #44 Satara Murray

**PRONUNCIATION:** SUH-tar-uh

**POSITION:** Defender

**HEIGHT:** 5-foot-8

**DOB:** July, 1, 1993

**AGE:** 29

**HOMETOWN:** Austin, Texas

**CITIZENSHIP:** Jamaica

**COLLEGE:** University of North Carolina

**PREVIOUS TEAM:** Bristol City FC (FA W Championship)

**ACQUIRED:** Signed 5/16/2022 through the 2023 season, with an option for 2024.

### 2022:

Murray made nine appearances, all starts at center back, after joining Racing in June.

### Before Racing Louisville:

Satara Murray appeared in all 22 matches with Bristol City FC, plus three cup games, as the club finished third in the league and reached the fourth round of the FA Cup and the final of the FA Women's League Cup, during during the Robin's 2021-2022 FA Women's Championship campaign. She has prior NWSL experience, too, spending 2019 with the Houston Dash, where she started all nine matches in which she appeared. A 2020 stint with Norwegian club Kolbotn followed. To start her professional career, Murray played four seasons for English powerhouse Liverpool. She totaled 66 appearances for the Reds, spending three alongside former Racing captain and center back Gemma Bonner.

### International:

Representing Jamaica, Murray has made four appearances, including three starts in the 2022 Concacaf W Championship, helping the Reggae Girlz qualify for the 2023 World Cup in Australia and New Zealand.



## #77 Wang Shuang

**PRONUNCIATION:** Wong Shwong

**POSITION:** Midfielder

**HEIGHT:** 5-foot-5

**DOB:** Jan. 23, 1995

**AGE:** 28

**HOMETOWN:** Wuhan, China

**CITIZENSHIP:** China

**PREVIOUS TEAM:** Wuhan Jiangnan University (China)

**ACQUIRED:** Signed 8/10/2022 through the 2023 season.

### 2022:

Joining the team in August, Wang made five appearances, including four starts. The midfielder scored in The Women's Cup semifinal against AC Milan and earned her first league point with an assist to Savannah DeMelo against the Orlando Pride.

### Before Racing Louisville:

Wang moved to Racing from her hometown club, Wuhan Jiangnan University FC, where she won back-to-back Chinese Women's Super League titles in 2020 and 2021. The left-footed attacker also previously played for French powerhouse Paris Saint-Germain, scoring seven goals in 18 appearances across all competitions. She was teammates there with Racing star Nadia Nadim.

### International:

A dynamic dribbler, passer and scorer, Wang has tallied 39 goals in 117 appearances for China's national team after making her debut at 17 years old. China won the 2022 Asian Cup earlier this year as Wang tied for second in tournament scoring with five goals, trailing only Australia's Sam Kerr, who had seven. Wang started in each of China's four 2019 World Cup matches, helping her squad reach the Round of 16 in France. She was also part of the 2015 World Cup team.



# Riley Parker

**POSITION:** Forward

**HEIGHT:** 5-foot-7

**DOB:** March 31, 2000

**AGE:** 22

**HOMETOWN:** Flower Mound, Texas

**CITIZENSHIP:** USA

**COLLEGE:** University of Alabama

**ACQUIRED:** 31st pick in 2023 NWSL Draft, signed 2/1/2023 to through the 2023 season, with an option for 2024.

## Before Racing Louisville:

An All-American and the SEC Forward of the Year as a senior at the University of Alabama, Parker set a program record with 17 goals this past fall. The Texas native helped the Crimson Tide reach the College Cup for the first time in school history a year after tearing her ACL and sitting out the 2021 season.

# 2022 Regular Season

5-9-8, 23 points

## AT A GLANCE

REGULAR SEASON RECORD	5-9-8
POINTS	23
REGULAR SEASON STANDING	9th
GOALS SCORED	23
GOALS CONCEDED	35
CAUTIONS	35

## INDIVIDUAL ACCOLADES

SAVE OF THE WEEK	<b>KATIE LUND (8/11)</b>
TEAM OF THE MONTH	<b>SAVANNAH DEMELO (MAY) KATIE LUND (SEPT/OCT.)</b>
ROOKIE OF THE MONTH	<b>SAVANNAH DEMELO (JULY)</b>

## 2022 STANDINGS

	W	L	D	GD	PTS
<b>1 OL REIGN</b>	11	4	7	13	40
<b>2 PORTLAND THORNS FC</b>	10	3	9	25	39
<b>3 SAN DIEGO WAVE FC</b>	10	6	6	11	36
<b>4 HOUSTON DASH</b>	10	6	6	8	36
<b>5 KANSAS CITY CURRENT</b>	10	6	6	0	36
<b>6 CHICAGO RED STARS</b>	9	7	6	6	33
<b>7 NORTH CAROLINA COURAGE</b>	9	8	5	13	32
<b>8 ANGEL CITY FC</b>	8	9	5	-4	29
<b>9 RACING LOUISVILLE FC</b>	5	9	8	-12	23
<b>10 ORLANDO PRIDE</b>	5	10	7	-23	22
<b>11 WASHINGTON SPIRIT</b>	3	8	10	-7	19
<b>12 NJ/NY GOTHAM FC</b>	4	17	1	-30	13

## 2022 SCHEDULE/RESULTS

### April

30 @Chicago Red Stars 2-1 L

### MAY

8 @OL Reign 2-2 D

14 Houston Dash 1-1 D

18 San Diego Wave FC 1-0 W

22 @NJ/NY Gotham FC 0-1 W

30 @Kansas City Current 1-0 L

### JUNE

4 North Carolina Courage 0-3 L

11 Angel City FC 2-3 L

17 @Washington Spirit 2-2 D

### JULY

3 @Orlando Pride 2-2 D

8 NJ/NY Gotham FC 1-2 L

15 @San Diego Wave FC 0-0 D

29 Portland Thorns FC 1-2 L

### AUGUST

2 OL Reign 1-1 D

5 Washington Spirit 1-1 D

12 @Houston Dash 0-0 D

27 Chicago Red Stars 0-4 L

### SEPTEMBER

10 @North Carolina Courage 5-1 L

16 Orlando Pride 2-0 W

21 @Portland Thorns FC 0-3 L

25 @Angel City FC 1-3 W

### OCTOBER

1 Kansas City Current 1-0 W

## SCORING BREAKDOWNS

HOME	0-15	16-30	31-45	46-60	61-75	76-90	TOTALS
RACING LOUISVILLE	2	1	1	2	2	2	10
OPPONENTS	4	3	2	1	2	5	16
AWAY	0-15	16-30	31-45	46-60	61-75	76-90	TOTALS
RACING LOUISVILLE	2	1	3	2	2	2	13
OPPONENTS	4	1	5	6	1	2	19
TOTALS	0-15	16-30	31-45	46-60	61-75	76-90	TOTALS
RACING LOUISVILLE	4	2	4	4	4	4	23
OPPONENTS	8	4	7	7	3	7	35



# 2022 Regular Season

## INDIVIDUAL PLAYER STATS

#	NAME	POS.	GP	GS	MIN	G	A	SH	SOG	Y	R	
2	MILLIET, LAUREN	MF	22	22	1947	1	1	9	2	1	0	
4	BONNER, GEMMA	D	20	20	1800	1	0	9	2	3	0	
6	HOWELL, JAE LIN	MF	22	22	1902	0	2	23	7	4	0	
7	DeMELO, SAVANNAH	MF	22	22	1957	4	2	23	11	3	0	
10	NADIM, NADIA	F	11	8	695	6	0	18	8	3	0	
11	FOX, EMILY	D	17	17	1473	1	1	6	5	2	0	
12	MALHAM, TAYLOR	MF	4	0	43	0	0	1	0	0	0	
13	EKIC, EMINA	F	19	5	671	2	0	21	12	1	0	
14	McDONALD, JESS	F	22	19	1739	3	4	28	12	1	0	
15	LESTER, JULIA	D	20	17	1554	0	0	2	2	4	0	
17	MARTIN, NEALY	D	11	8	613	0	0	2	1	2	0	
21	GOINS, PARKER	F	7	0	84	0	0	0	0	0	0	
22	DAVIS, KIRSTEN	F	18	10	886	2	1	21	9	1	0	
25	HOLLOWAY, REBECCA	D	6	2	206	0	0	2	0	0	0	
27	CHIDIAC, ALEX	MF	18	14	901	2	0	10	6	0	0	
30	WYNE, ZANETA	D	8	3	297	0	0	1	0	2	0	
44	MURRAY, SATARA	D	9	9	750	0	0	1	0	3	1	
77	SHUANG, WANG	MF	4	4	291	0	1	6	2	0	0	
	GORDON, SH'NIA	F	4	0	83	0	0	2	1	0	0	
	KIZER, CECE	F	7	7	553	0	2	1	1	0	0	
	MERRICK, ADDISYN	D	2	2	179	0	0	0	0	0	0	
	OLOFSSON, FREJA	MF	14	9	826	0	0	5	0	2	0	
	OTTO, TAYLOR	MF	1	0	8	0	0	0	0	0	0	
	SALMON, EBONY	F	5	0	70	0	0	7	1	0	0	
	SIMON, ERIN	D	2	2	157	0	0	0	0	1	0	
#		POS.	GP	GS	MIN	GA	GAA	SV	SHT	SV %	CS	W-L-D
1	LUND, KATIE	GK	22	22	1980	35	1.59	112	147	.76	6	5-9-8
18	BEALL, HILLARY	GK	0	0	0	0	0	0	0	0	0	0
24	BLOOMER, JORDYN	GK	0	0	0	0	0	0	0	0	0	0
31	DAUGHERTY, KELSEY	GK	0	0	0	0	0	0	0	0	0	0

# 2022 Regular Season

## BOX SCORES

**April 30, 2022- Racing Louisville at Chicago Red Stars**  
SeatGeek Stadium - 8 p.m.  
Weather: 64 degrees, thunderstorms

**Goals- CHI:** 2' Ella Stevens, 26' Bianca St-Georges **LOU:** 10' Emily Fox (Cece Kizer)

**Lineup:** 1 – Katie Lund; 11 – Emily Fox, 4 – Gemma Bonner (C), 15 – Julia Lester, 17 – Nealy Martin (32' 13 – Emrina Ekic); 6 – Jaelin Howell (74' 22 – Kirsten Davis), 7 – Savannah DeMelo, 8 – Freja Olofsson; 2 – Lauren Milliet, 14 – Jessica McDonald, 5 – Cece Kizer **Subs not used:** 24 – Jordyn Bloomer, 3 – Erin Simon, 26 – Addisyn Merrick; 14 – Taylor Malham, 19 – Taylor Otto; 9 – Ebony Salmon, 21 – Parker Goins, 23 – Sh'Nia Gordon

**Stats Summary: CHI / LOU**  
Shots: 8 / 14  
Shots on Goal: 3 / 6  
Possession: 38.9% / 61.1%  
Fouls: 10 / 15  
Offside: 2 / 1  
Corner Kicks: 3 / 7

**Referee: Jeremy Scheer**

**May 18, 2022- Racing Louisville vs. San Diego Wave**  
Lynn Family Stadium - 7:30 p.m.  
Weather: 70 degrees, cloudy

**Goals- LOU:** 27' Savannah DeMelo

**Lineup:** 1 – Katie Lund; 11 – Emily Fox, 26 – Addisyn Merrick (90' 22 – Kirsten Davis), 3 – Erin Simon, 17 – Nealy Martin (73' 15 – Julia Lester); 6 – Jaelin Howell, 7 – Savannah DeMelo; 2 – Lauren Milliet, 5 – Cece Kizer (73' 13 – Emrina Ekic 73'), 27 – Alex Chidiac (81' 23 – Sh'Nia Gordon); 14 – Jess McDonald (C) **Subs not used:** 24 – Jordyn Bloomer, 9 – Ebony Salmon, 12 – Taylor Malham, 19 – Taylor Otto, 21 – Parker Goins

**Stats Summary: LOU / SD**  
Shots: 9 / 9  
Shots on Goal: 6 / 4  
Possession: 50.1% / 49.1%  
Fouls: 7 / 16  
Offside: 4 / 1  
Corner Kicks: 10 / 10

**Referee: Joshua Encarnacion**

**June 4, 2022- Racing Louisville vs. North Carolina Courage**  
Lynn Family Stadium - 8 p.m.  
Weather: 82 degrees, partly cloudy

**Goals:** NC: 4' Kaleigh Kurtz (Carson Pickett), 45+1' Diana Ordoñez (Merritt Mathias), 90+1' Debinha (Taylor Smith)

**Lineup:** 1 – Katie Lund, 25 – Rebecca Holloway (54' 8 – Freja Olofsson), 15 – Julia Lester, 4 – Gemma Bonner, 11 – Emily Fox, 2 – Lauren Milliet (84' 9 – Ebony Salmon), 6 – Jaelin Howell (83' 17 – Nealy Martin), 27 – Alex Chidiac (67' 13 – Emrina Ekic), 5 – CeCe Kizer (67' 10 – Nadia Nadim), 7 – Savannah DeMelo, 14 – Jess McDonald **Subs not used:** 18 – Hillary Beall, 22 – Kristen Davis, 19 – Taylor Otto

**Stats Summary: LOU/NC**  
Shots: 12 / 10  
Shots on Goal: 3 / 5  
Possession: 43.9% / 56.1%  
Fouls: 8 / 11  
Offside: 5 / 3  
Corner Kicks: 6 / 3

**Referee: Eric Tattersall**

**July 3, 2022- Racing Louisville at Orlando Pride**  
DAYTONA International Speedway - 8 p.m.  
Weather: 80 degrees, cloudy

**Goals: LOU:** 34' Emrina Ekic, 51' Savannah DeMelo **ORL:** 59' Kylie Strom (Darian Jenkins), 69' Darian Jenkins (Erika Tymrak)

**Lineup:** 1 – Katie Lund; 2 – Lauren Milliet, 15 – Julia Lester, 4 – Gemma Bonner (C), 17 – Nealy Martin (74' 12 – Taylor Malham); 8 – Freja Olofsson (65' 27 – Alex Chidiac), 6 – Jaelin Howell, 14 – Jess McDonald, 7 – Savannah DeMelo, 13 – Emrina Ekic; 22 – Kristen Davis (65' 21 – Parker Goins) **Subs not used:** 18 – Hillary Beall, 24 – Jordyn Bloomer, 29 – Allison Whitfield

**Stats Summary: LOU/ORL**  
Shots: 15 / 13  
Shots on Goal: 8 / 8  
Possession: 45.6% / 54.4%  
Fouls: 13 / 15  
Offside: 4 / 1  
Corner Kicks: 4 / 4

**Referee: Alex Billeter**

**May 8, 2022- Racing Louisville at OL Reign**  
Lumen Field - 6 p.m.  
Weather: 54 degrees, partly cloudy

**Goals- LOU:** 23' Jess McDonald (Cece Kizer), 60' Bethany Balcer own goal, **RGN:** 33' Tziarra King (Angelina), 37' Tziarra King

**Lineup:** 1 – Katie Lund; 2 – Lauren Milliet, 4 – Gemma Bonner (C), 15 – Julia Lester, 17 – Nealy Martin; 6 – Jaelin Howell, 7 – Savannah DeMelo (90'+1 22 – Kirsten Davis), 8 – Freja Olofsson; 14 – Jessica McDonald, 5 – Cece Kizer, 13 – Emrina Ekic (62' 9 – Ebony Salmon) **Subs not used:** 24 – Jordyn Bloomer; 3 – Erin Simon, 26 – Addisyn Merrick; 12 – Taylor Malham, 19 – Taylor Otto; 21 – Parker Goins, 23 – Sh'Nia Gordon

**Stats Summary: LOU / RGN**  
Shots: 15 / 16  
Shots on Goal: 5 / 9  
Possession: 48.3% / 51.7%  
Fouls: 9 / 12  
Offside: 1 / 4  
Corner Kicks: 1 / 3

**Referee: Karen Callado**

**May 18, 2022- Racing Louisville @ NJ/NY Gotham FC**  
Red Bull Arena - 5 p.m.  
Weather: 92 degrees, mostly sunny

**Goals: LOU:** 13' Lauren Milliet (Jess McDonald)

**Lineup:** 1 – Katie Lund, 11 – Emily Fox, 15 – Julia Lester, 4 – Gemma Bonner, 17 – Nealy Martin (56' 56' 8 – Freja Olofsson), 6 – Jaelin Howell, 7 – Savannah DeMelo (90' 19 – Taylor Otto), 27 – Alex Chidiac (56' 23 – Sh'Nia Gordon), 5 – Cece Kizer (74' 22 – Kirsten Davis), 2 – Lauren Milliet, 14 – Jess McDonald (74' 9 – Ebony Salmon) **Subs not used:** 24 – Jordyn Bloomer, 3 – Erin Simon, 21 – Parker Goins, 26 – Addisyn Merrick

**Stats Summary: NJNY/LOU**  
Shots: 13 / 11  
Shots on Goal: 4 / 2  
Possession: 50.2% / 49.8%  
Fouls: 15 / 10  
Offside: 2 / 0  
Corner Kicks: 4 / 7

**Referee: Thomas Snyder**

**June 11, 2022- Racing Louisville vs. Angel City FC**  
Lynn Family Stadium - 8 p.m.  
Weather: 80 degrees, mostly cloudy

**Goals: LOU:** 9' Gemma Bonner (Savannah DeMelo), 65' Nadia Nadim **LA:** 36' Christen Press (Megan Reid), 47' Savannah McCaskill (Christen Press), 90+3' Savannah McCaskill

**Lineup:** 1 – Katie Lund, 27 – Alex Chidiac (51' 13 – Emrina Ekic) 15 – Julia Lester, 4 – Gemma Bonner, 11 – Emily Fox, 7 – Savannah DeMelo, 6 – Jaelin Howell, 17 – Nealy Martin, 8 – Freja Olofsson (61' 10 – Nadia Nadim), 2 – Lauren Milliet, 14 – Jessica McDonald **Subs not used:** 18 – Hillary Beall, 22 – Kristen Davis, 21 – Parker Goins, 25 – Rebecca Holloway, 19 – Taylor Otto, 9 – Ebony Salmon

**Stats Summary: LOU / LA**  
Shots: 18 / 10  
Shots on Goal: 4 / 5  
Possession: 53.9% / 46.1%  
Fouls: 17 / 15  
Offside: 2 / 1  
Corner Kicks: 5 / 2  
**Referee: Rebecca Luther**

**July 8, 2022- Racing Louisville vs. NJ/NY Gotham FC**  
Lynn Family Stadium - 8 p.m.  
Weather: 80 degrees, partly cloudy

**Goals: LOU:** 67' Savannah DeMelo, **NJ/NY:** 25' Paige Monaghan (Delanie Sheehan), 81' Taylor Smith

**Lineup:** 1 – Katie Lund; 2 – Lauren Milliet, 15 – Julia Lester, 4 – Gemma Bonner (C), 30 – Zaneta Wyne (87' 12 – Taylor Malham); 6 – Jaelin Howell (88' 17 – Nealy Martin), 7 – Savannah DeMelo; 14 – Jess McDonald, 27 – Alex Chidiac, 13 – Emrina Ekic (66' 8 – Freja Olofsson); 22 – Kristen Davis (75' 21 – Parker Goins) **Subs not used:** 18 – Hillary Beall, 24 – Jordyn Bloomer, 29 – Allison Whitfield, 33 – Isabella Beletic; 28 – Hannah Adler

**Stats Summary: LOU/NJNY**  
Shots: 23 / 9  
Shots on Goal: 9 / 4  
Possession: 52.4% / 47.6%  
Fouls: 12 / 16  
Offside: 1 / 2  
Corner Kicks: 9 / 3

**Referee: Danielle Chesky**

**May 14, 2022- Racing Louisville vs. Houston Dash**  
Lynn Family Stadium - 8 p.m.  
Weather: 78 degrees, cloudy

**Goals: LOU -** 82' Jess McDonald (Lauren Milliet), **HOU -** 77' Nichelle Prince

**Lineup:** 1 – Katie Lund; 11 – Emily Fox, 26 – Addisyn Merrick, 3 – Erin Simon (86' 13 – Emrina Ekic), 17 – Nealy Martin; 6 – Jaelin Howell (83' 19 – Taylor Otto), 7 – Savannah DeMelo; 2 – Lauren Milliet, 5 – Cece Kizer (83' 9 – Ebony Salmon), 22 – Kirsten Davis (56' 23 – Sh'Nia Gordon); 14 – Jessica McDonald **Subs not used:** 24 – Jordyn Bloomer; 12 – Taylor Malham, 27 – Alex Chidiac, 21 – Parker Goins

**Stats Summary: LOU/HOU**  
Shots: 10 / 11  
Shots on Goal: 2 / 4  
Possession: 59.7% / 40.3%  
Fouls: 11 / 15  
Offside: 3 / 0  
Corner Kicks: 4 / 4

**Referee: Samantha Martinez**

**May 18, 2022- Racing Louisville @ Kansas City Current**  
Children's Mercy Park - 3 p.m.  
Weather: 86 degrees, partly cloudy

**Goals: KC:** 3' LaBonta (penalty)

**Lineup:** 1 – Katie Lund; 25 – Rebecca Holloway (67' 27 – Alex Chidiac), 4 – Gemma Bonner (C), 15 – Julia Lester, 11 – Emily Fox; 6 – Jaelin Howell, 8 – Freja Olofsson (84' 23 – Sh'Nia Gordon); 7 – Savannah DeMelo, 5 – Cece Kizer (78' 9 – Ebony Salmon), 2 – Lauren Milliet; 14 – Jess McDonald (67' 22 – Kirsten Davis) **Subs not used:** 18 – Hillary Beall; 3 – Erin Simon, 17 – Nealy Martin, 19 – Taylor Otto, 21 – Parker Goins

**Stats Summary: LOU / KC**  
Shots: 7 / 4  
Shots on Goal: 1 / 2  
Possession: 60% / 40%  
Fouls: 12 / 16  
Offside: 4 / 2  
Corner Kicks: 4 / 4

**Referee: Danielle Chesky**

**June 11, 2022- Racing Louisville @ Washington Spirit**  
Segra Field - 7:30 p.m.  
Weather: 78 degrees, mostly sunny

**Goals: LOU:** 66' Nadia Nadim (Jess McDonald), 89' Nadia Nadim (Jess McDonald) **WAS:** 34' Trinity Rodman (Assisted by: Ashley Sanchez), 43' Madison Elwell

**Lineup:** 1 – Katie Lund, 11 – Emily Fox, 15 – Julia Lester, 4 – Gemma Bonner, 17 – Nealy Martin (56' 10 – Nadia Nadim), 6 – Jaelin Howell, 8 – Freja Olofsson (78' 21 – Parker Goins), 27 – Alex Chidiac (8' 13 – Emrina Ekic, 56' 22 – Kristen Davis), 7 – Savannah DeMelo, 2 – Lauren Milliet, 14 – Jessica McDonald **Subs not used:** 24 – Jordyn Bloomer, 25 – Rebecca Holloway, 19 – Taylor Otto, 9 – Ebony Salmon

**Stats Summary: WAS / LOU**  
Shots: 26 / 8  
Shots on Goal: 8 / 4  
Possession: 52.9% / 47.1%  
Fouls: 13 / 9  
Offside: 7 / 5  
Corner Kicks: 8 / 1

**Referee: Matthew Franz**

**July 8, 2022- Racing Louisville at San Diego Wave FC**  
Torero Stadium - 10 p.m.  
Weather: 70 degrees, partly cloudy

**Lineup:** 1 – Katie Lund; 30 – Zaneta Wyne, 15 – Julia Lester, 4 – Gemma Bonner (C), 2 – Lauren Milliet; 6 – Jaelin Howell, 8 – Freja Olofsson; 7 – Savannah DeMelo, 27 – Alex Chidiac (89' 13 – Emrina Ekic), 14 – Jess McDonald; 22 – Kristen Davis (83' 21 – Parker Goins) **Subs not used:** 18 – Hillary Beall, 24 – Jordyn Bloomer; 12 – Taylor Malham, 17 – Nealy Martin, 28 – Hannah Adler, 29 – Allison Whitfield, 33 – Isabella Beletic

**Stats Summary: LOU/SD**  
Shots: 20 / 19  
Shots on Goal: 6 / 9  
Possession: 53.3% / 46.7%  
Fouls: 8 / 13  
Offside: 2 / 0  
Corner Kicks: 7 / 4

**Referee: Karen Callado**

# 2022 Regular Season

## BOX SCORES CONTD.

**July 29, 2022- Racing Louisville vs Portland Thorns FC**  
Lynn Family Stadium - 8 p.m.  
Weather: 79 degrees, partly cloudy

**Goals:** LOU: 30' Alex Chidiac (Jaelin Howell) **POR:** 7' Sophia Smith (Morgan Weaver), 78' Hina Sugita

**Lineup:** 1 – Katie Lund; 11 – Emily Fox, 44 – Satara Murray (78' 15 – Julia Lester), 4 – Gemma Bonner (c), 2 – Lauren Milliet, 6 – Jaelin Howell, 8 – Freja Olofsson (78' 30 – Zaneta Wyne), 7 – Savannah DeMelo; 27 – Alex Chidiac (78' 13 – Emina Ekic), 10 – Nadia Nadim, 14 – Jess McDonald **Subs not used:** 18 – Hillary Beall, 24 – Jordyn Bloomer, 12 – Taylor Malham, 17 – Nealy Martin; 21 – Parker Goins, 22 – Kirsten Davis

**Stats Summary: LOU/POR**

Shots: 17 / 25  
Shots on Goal: 7 / 6  
Possession: 48.6% / 51.4%  
Fouls: 12 / 11  
Offside: 0 / 0  
Corner Kicks: 7 / 4

**Referee: Alyssa Nichols**

**Aug. 2 2022- Racing Louisville vs OL Reign**  
Lynn Family Stadium - 8 p.m.  
Weather: 79 degrees, partly cloudy

**Goals:** LOU: 45'+1 Kirsten Davis, RGN: 2' Jess Fishlock (Megan Rapinoe)

**Lineup:** 1 – Katie Lund, 11 Emily Fox (46' 10 – Nadia Nadim), 44 – Satara Murray, 4 – Gemma Bonner, 15 – Julia Lester, 6 – Jaelin Howell (65' 8 – Freja Olofsson), 7 – Savannah DeMelo, 27 – Alex Chidiac (65' 13 – Emina Ekic), 2 – Lauren Milliet (78' 30 – Zaneta Wyne), 14 – Jess McDonald, 22 – Kirsten Davis (89' 25 – Rebecca Holloway) **Subs not used:** 24 – Jordyn Bloomer, 17 – Nealy Martin, 12 – Taylor Malham, 21 – Parker Goins

**Stats Summary: LOU/ RGN**

Shots: 6 / 25  
Shots on Goal: 1 / 11  
Possession: 39.2% / 60.8%  
Fouls: 16 / 11  
Offside: 2 / 1  
Corner Kicks: 2 / 9

**Referee: Laura Rodríguez**

**Aug., 5 2022- Racing Louisville vs Washington Spirit**  
Lynn Family Stadium - 8 p.m.  
Weather: 82 degrees, mostly cloudy

**Goals:** LOU: 52' Nadia Nadim (Kirsten Davis), **WAS:** 64' Ashley Hatch (Jordan Baggett)

**Lineup:** 1 – Katie Lund, 11 Emily Fox, 44 – Satara Murray, 4 – Gemma Bonner, 15 – Julia Lester, 6 – Jaelin Howell (79' 14 – Jess McDonald), 7 – Savannah DeMelo, 8 – Freja Olofsson (70' 27 – Alex Chidiac), 2 – Lauren Milliet, 10 – Nadia Nadim, 22 – Kirsten Davis (90' 13 – Emina Ekic) **Subs not used:** 24 – Jordyn Bloomer, 25 – Rebecca Holloway, 17 – Nealy Martin, 30 – Zaneta Wyne, 12 – Taylor Malham, 21 – Parker Goins

**Stats Summary: LOU/WAS**

Shots: 13 / 12  
Shots on Goal: 4 / 6  
Possession: 42.5% / 57.5%  
Fouls: 12 / 12  
Offside: 3 / 3  
Corner Kicks: 6 / 4

**Referee: Rebecca Pagan**

**Aug. 12, 2022- Racing Louisville at Houston Dash**  
PNG Stadium - 8:30 p.m.  
Weather: 85 degrees, partly cloudy

**Lineup:** 1 – Katie Lund; 11 – Emily Fox (78' 30 – Zaneta Wyne), 44 – Satara Murray, 4 – Gemma Bonner (c); 2 – Lauren Milliet, 6 – Jaelin Howell (88' 8 – Freja Olofsson), 7 – Savannah DeMelo; 27 – Alex Chidiac (60' 77 – Wang Shuang), 15 – Julia Lester; 10 – Nadia Nadim (88' 13 – Emina Ekic), 22 – Kirsten Davis (78' 14 – Jess McDonald) **Subs not used:** 24 – Jordyn Bloomer, 17 – Nealy Martin, 25 – Rebecca Holloway, 21 – Parker Goins

**Stats Summary: LOU/HOU**

Shots: 3 / 15  
Shots on Goal: 0 / 10  
Possession: 47.9% / 52.1%  
Fouls: 6 / 10  
Offside: 3 / 2  
Corner Kicks: 4 / 2

**Referee: Ekaterina Katja Koroleva**

**Aug. 27 2022- Racing Louisville vs Chicago Red Stars**  
Lynn Family Stadium - 7:30 p.m.  
Weather: 85 degrees, partly cloudy

**Goals:** CHI: 3' Mallory Pugh (Bianca St-Georges), 18' Yuki Nagasato (Mallory Pugh), 23' Yuki Nagasato (Mallory Pugh), 73' Mallory Pugh (Yuki Nagasato)

**Lineup:** 1 – Katie Lund; 11 – Emily Fox, 15 – Julia Lester, 4 – Gemma Bonner (c), 2 – Lauren Milliet (74' 12 – Taylor Malham); 6 – Jaelin Howell, 7 – Savannah DeMelo (82' 8 – Freja Olofsson); 27 – Alex Chidiac (33' 25 – Rebecca Holloway), 77 – Wang Shuang (32' 30 – Zaneta Wyne); 10 – Nadia Nadim, 22 – Kirsten Davis (46' 14 – Jess McDonald) **Subs not used:** 24 – Jordyn Bloomer, 17 – Nealy Martin; 13 – Emina Ekic, 21 – Parker Goins

**Stats Summary LOU/CHI**

Shots: 11 / 14  
Shots on Goal: 2 / 7  
Possession: 45.8% / 54.2%  
Fouls: 12 / 6  
Offside: 3 / 1  
Corner Kicks: 4 / 3

**Referee: Alex Billeter**

**Sept. 10, 2022- Racing Louisville at NC Courage**  
WakeMed Soccer Park - 7 p.m.  
Weather: 75 degrees, rainy

**Goals:** LOU: 72' Nadia Nadim **NC:** 9' Kerolin, 42' Kerolin (Denise O'Sullivan), 56' Debinha (Kerolin), 84' Debinha (pk), 90' Tess Boade

**Lineup:** 1 – Katie Lund; 30- Zaneta Wyne (77' 25- Rebecca Holloway), 44 – Satara Murray, 4 – Gemma Bonner (c), 15 – Julia Lester (46' 17 – Nealy Martin); 2 – Lauren Milliet, 6 – Jaelin Howell, 77 – Wang Shuang (90' 21 – Parker Goins); 7 – Savannah DeMelo (84' 13 – Emina Ekic), 10 – Nadia Nadim, 14 – Jess McDonald **Subs not used:** 24 – Jordyn Bloomer, 31 – Kelsey Daugherty, 12 – Taylor Malham, 27 – Alex Chidiac, 22 – Kirsten Davis

**Stats Summary: LOU / NC**

Shots: 5 / 22  
Shots on Goal: 2 / 12  
Possession: 40% / 54.5%  
Fouls: 8 / 10  
Offside: 2 / 4  
Corner Kicks: 4 / 8

**Referee: Samantha Martinez**

**Sept. 16, 2022- Racing Louisville vs. Orlando Pride**  
Lynn Family Stadium - 7:30 p.m.  
Weather: 80 degrees, partly cloudy

**Goals:** LOU: 10' Nadia Nadim (Jess McDonald), 50' Savannah DeMelo (Wang Shuang)

**Lineup:** 1 – Katie Lund; 11 – Emily Fox, 4 – Gemma Bonner (c), 44 – Satara Murray, 2 – Lauren Milliet; 6 – Jaelin Howell, 7 – Savannah DeMelo, 77 – Wang Shuang (90'+1 30 – Zaneta Wyne); 13 – Emina Ekic (85' 27 – Alex Chidiac), 10 – Nadia Nadim, 14 – Jess McDonald (87' 22 – Kirsten Davis) **Subs not used:** 24 – Jordyn Bloomer, 31 – Kelsey Daugherty; 12 – Taylor Malham, 17 – Nealy Martin, 25 – Rebecca Holloway; 21 – Parker Goins

**Stats Summary: LOU/ORL**

Shots: 11 / 14  
Shots on Goal: 5 / 7  
Possession: 46.2% / 53.8%  
Fouls: 15 / 10  
Offside: 0 / 1  
Corner Kicks: 5 / 9

**Referee: Anya Voigt**

**Sept. 17, 2022- Racing Louisville at Portland Thorns**  
Providence Park - 10 p.m.  
Weather: 72 degrees, cloudy

**Goals:** POR: 47' Sophia Smith, 48' Sam Coffey (Natalia Kuikka), 56' Olivia Moultrie

**Lineup:** 1 – Katie Lund; 11 – Emily Fox, 44 – Satara Murray, 4 – Gemma Bonner (c), 2 – Lauren Milliet; 6 – Jaelin Howell (82' 12 – Taylor Malham), 7 – Savannah DeMelo (82' 25 – Rebecca Holloway), 27 – Alex Chidiac; 13 – Emina Ekic (51' 15 – Julia Lester), 10 – Nadia Nadim (26' 22 – Kirsten Davis), 14 – Jess McDonald **Subs not used:** 18 – Hillary Beall, 24 – Jordyn Bloomer, 31 – Kelsey Daugherty; 17 – Nealy Martin; 21 – Parker Goins

**Stats Summary: LOU/ POR**

Shots: 7 / 28  
Shots on Goal: 1 / 14  
Possession: 43% / 57%  
Fouls: 12 / 13  
Offside: 1 / 1  
Corner Kicks: 2 / 7

**Referee: JC Griggs**

**Sept. 25, 2022- Racing Louisville at Angel City FC**  
Banc of California Stadium - 8 p.m.  
Weather: 82 degrees, sunny

**Goals:** LOU: 38' Kirsten Davis (Jaelin Howell), 43' Alex Chidiac (p), 90' Emina Ekic (Emily Fox) **LA:** 14' Savannah McCaskill (Jun Endo)

**Lineup:** 1 – Katie Lund; 11 – Emily Fox, 44 – Satara Murray, 4 – Gemma Bonner (c), 15 – Julia Lester; 2 – Lauren Milliet 6 – Jaelin Howell; 27 – Alex Chidiac (61' 13 – Emina Ekic), 7 – Savannah DeMelo, 14 – Jess McDonald; 22 – Kirsten Davis (71' 21 – Parker Goins) **Subs not used:** 18 – Hillary Beall, 24 – Jordyn Bloomer, 31 – Kelsey Daugherty; 12 – Taylor Malham, 17 – Nealy Martin; 25 – Rebecca Holloway

**Stats Summary: LOU / LA**

Shots: 10 / 19  
Shots on Goal: 6 / 7  
Possession: 45.5% / 54.5%  
Fouls: 15 / 8  
Offside: 2 / 4  
Corner Kicks: 4 / 6

**Referee: Adorae Monroy**

**Oct. 1, 2022- Racing Louisville vs. Kansas City Current**  
Lynn Family Stadium - 7:30 p.m.  
Weather: 65 degrees, sunny

**Goals:** LOU: 90'+2 Jess McDonald (Savannah DeMelo)

**Lineup:** 1 – Katie Lund; 11 – Emily Fox, 44 – Satara Murray, 4 – Gemma Bonner (c), 15 – Julia Lester; 6 – Jaelin Howell, 2 – Lauren Milliet; 27 – Alex Chidiac (58' 13 – Emina Ekic), 7 – Savannah DeMelo, 14 – Jess McDonald; 22 – Kirsten Davis (85' 21 – Parker Goins) **Subs not used:** 18 – Hillary Beall, 24 – Jordyn Bloomer, 31 – Kelsey Daugherty; 25 – Rebecca Holloway, 17 – Nealy Martin, 12 – Taylor Malham

**Stats Summary: LOU/ KC**

Shots: 11 / 13  
Shots on Goal: 2 / 6  
Possession: 51.6% / 48.4%  
Fouls: 9 / 18  
Offside: 3 / 1  
Corner Kicks: 5 / 6

**Referee: Karen Callado**

# NWSL MEDIA POLICY

Media credentials and access will be granted only to individuals with a legitimate working function at a game, training session or event. The bearer must be on a specific assignment. Credentials are non-transferable. Any unauthorized use of a credential subjects the bearer to ejection from the stadium. Resale or attempted resale is grounds for seizure and cancellation.

The following actions may result in seizure of credential and/or ejection of its wearer from the stadium or training facility:

- Requesting autographs at any time.
- Taking photographs with players/coaches
- Using credential for family or friends of a working media member
- Conduction of unauthorized interviews
- Unprofessional behavior (Cheering in the press box, consumption of alcoholic beverages, failure to abide by posted rules, etc.)

## TREATMENT OF CREDENTIAL MEDIA

**Postgame Media Access:** Players from both teams will be available to media post-game in a mix-zone located outside the team locker rooms or in a location near the field of play. The mix-zone will begin 10 minutes after the conclusion of the match. Locker rooms will not be open to media at any point.

Team PR directors should be present to indicate the beginning and end of media access to players, and ensure media have access to the head coach and players after the match. All players are highly encouraged to be available to media post-game.

All regulations about post-game media access should be clearly communicated to team staff and security to ensure a secure environment.

No individuals other than League or Club representatives shall be allowed in Club locker rooms following a game.

Under no circumstances shall any club and/or its players discriminate in any fashion against an accredited member of the media based upon race, creed, sex or national origin.

**Seating Access:** Accredited media members will have access to the stadium, professional workrooms and stadium seating, if available. During the match, accredited media will have access to the press box which will be restricted to only those accredited media members.

In addition, each stadium should have a Press Box capable of seating no less than TEN (10) people, with separate areas for working press and electronic broadcasters, and sufficient power outlets for all needs. If possible, all accredited media members should be given a seat in the press box.

All credentialed media shall be seated in media seating areas, consistent with treatment afforded comparable media. In addition, all members of the media are to be afforded equal treatment and access to facilities and personnel, regardless of sex.

When the press box is fully occupied by working media, referee assessors or in-stadium observers shall be provided seating with a desk or table shielded from the weather and a vantage point to view replays (if available) from any telecast. The specific location may be determined by the Home Team but must provide these minimum accommodations.

In order to maintain the integrity of the working press box, seating is specifically reserved for media members. All other individuals (including player agents, VIP's and administrators) should be seated in overflow booths or assigned stadium seats.

**Traveling Media:** Members of the working media who travel with a visiting team are not to be treated in a discriminatory manner with regard to seating or any other privilege or facility accorded to the home media. Comparable seating and equipment should apply to home and road media (print and electronic).

**Media Access to Practice:** Clubs are encouraged to make all practices open to media. If a practice is closed, clubs must grant a 15-minute media access period at the start or end of practice, as well as making the coach and players available for interviews following the conclusion of practice. Clubs are strongly encouraged to ensure that ballwork is at least part of the

15-minute access period. If practices are open to the media, as defined above, they must be open to all media; if practices are closed to the media, they must be closed to all media.

Clubs violating the media access policies on practice days will be subject to fines or other discipline at the discretion of NWSL Commissioner Jeff Plush.

**Guidelines for Photographers and Camera Operators:** All photographers and television camera operators must stay behind the field boards at all times, unless released by the on-site photo marshal. The only exception to the field board rule will be when a staff photographer, a national rights-holder or NWSL has a crew at a game. These entities will be allowed to shoot from the area between the field boards and the touch lines in the area bounded by the top of the 18-yard box and the end line.

Each photographer will be permitted to use one monopod — but no tripods. No seats other than “lawn-type” photographer seats will be permitted.

Stand-alone remote units will not be permitted at any time on or around the goal posts. Units mounted on the top of field boards behind the end line will be permitted at the stadium’s discretion, provided the equipment does not interfere with the clear display of the field board and does not impede the operation of broadcast equipment.

Live television crews located on the baseline or sideline will be limited to two (2) people — a camera operator and a cable-puller — and ENG crews will be limited to one (1) person. In either case, the crew must maintain actual possession of the camera and any other equipment during all game action. Cameramen and cable-pullers from all television crews must remain off the playing field at all times.

**Photographer Access to field:** Photographers and camera operators shall be permitted in the area between the field boards and the touch lines in the area bounded by the top of the 18-yard box and the end line (a C-shape that extends from the top of the 18, back behind the goal, and to the top of the 18 on the opposite side of the field).

Once situated, no movement between the two halves of the field shall be permitted until halftime. Changes in this policy will be allowed in cases where stadium facilities dictate alterations. No photographers shall be allowed to move from end to end on the bench side of the field.

**Photographer Identification:** In addition to their regular credential, it is strongly recommended that photographers and camera crews be issued with colored bibs or armbands. This makes them easy to identify, and they would presumably enjoy quick and easy access to their designated areas. This will necessitate a special area in or near the stadium where they can pick up their bibs, on presentation of their accreditation, either the day before the match or on game day, at the time media gates are opened. If they are not to be allowed to keep the bib, then it should be exchanged for a press card to be picked up following the game, or else signed out.

**Photography Work Area:** A work area should be provided for photographers, near the field where appropriate, with high-speed internet access. The size of the room may vary, but it should be sizeable enough for at least 5 – 10 people to work on desktops/tables. Like the press section of the stands, the photographers’ work room should have sufficient electrical sockets and compatible with the equipment being used for transmission.

**Accreditation:** Care should be taken when processing credential requests for photographers shooting for commercial agencies. NWSL does not permit the accreditation of photographers shooting specifically for commercial agencies. However, since many agencies offer editorial and commercial sales options (Getty Images, AP, Reuters, etc.) this must be handled on a case-by-case basis.

## **NON-RIGHTS HOLDER VIDEO GUIDELINES**

**Video Footage:** All rights to match footage including all applicable copyrights belong to NWSL and its rights holders who broadcast each specific match. NWSL has one rights holders that will broadcast select matches in 2017: Lifetime. If an organization is interested in recording video footage at a NWSL match for non-news gathering purposes they should contact NWSL Communications.

## **TELEVISION BROADCASTERS**

**Game Action:** Television broadcasters can use footage of NWSL events obtained either via 1) their own recording or 2) action dubbed from a NWSL rights holder broadcast (Lifetime) with credit only in connection with its regularly scheduled news programming within a week of the game. This footage should not exceed two (2) minutes. Highlights aired as part of a continuous news program should not be longer than one (1) minute per 30-minute segment. Credits: NWSL Media / Lifetime (for

the Game of the Week); NWSL Media (for all other games).

**Filming – Game Action:** For televised events, non-rights holders / ENG cameras may record the first 15 minutes of each half (from 00:00 to 15:00 and 45:00 to 60:00 on the game clock). For non-televised events, non-rights holders / ENG cameras may record the entire game but are still subject to the aforementioned limits. This includes events that are web streamed live online.

**Filming – Interviews and Scene Sets:** There is no limit to the gathering of footage pre-game, at halftime and post-game. All footage gathered is subject to the usage guidelines indicated in this document.

**Filming – In Seating Area:** Video cameras looking to shoot in the concourse or seating area must contact home team and NWSL in advance of the event for approval.

**Previews or Advances:** In advance of a NWSL event, television broadcasters can use two (2) minutes of archival game action to preview an upcoming event. In the local/regional markets, broadcasters should mention the time and location of the game along with their report. Outside of the local markets, broadcasters should mention the time and broadcast information.

**Television Broadcasters' Web Sites:** Video produced for air as part of regular programming that is simulcast or archived online must be accompanied by a link to NWSLsoccer.com. Content produced exclusively for the Internet is subject to the guidelines for Online Video.

## ONLINE VIDEO

**Game Action:** Online organizations (including print publications that post video online) are not permitted to film or use game action video without prior written approval by NWSL Media. Game action includes any footage of the field, teams, etc., following the beginning of the television broadcast window. Only video of off-field activities (i.e. interviews, training sessions) may be recorded.

**Non-Game Video:** Any video posted online that is recorded as part of media access is limited to the use of eight (8) minutes per day/activity date. Online video may not incorporate integrated advertising and must be accompanied by links to NWSLsoccer.com.

**Professional Presentation:** Online video is expected to be recorded, edited and presented in a professional manner. Video must be presented/hosted on an organization's website, and not solely on a site provided by a third-party (i.e. YouTube, Vimeo, Facebook, etc.).

**Online Video Sites:** Organizations who regularly post video to online video sites (i.e. YouTube, Vimeo, etc.) may not include advertising with video gathered as a result of media access. Allowing users to embed these videos is not permitted, and the description of any video must include a link to NWSLsoccer.com

The National Women's Soccer League competition rules can be found at:

<http://www.nwslsoccer.com/rules-regulations>

The National Women's Soccer League media contacts for 2023 can be found at:

<http://www.nwslsoccer.com/media-contacts>