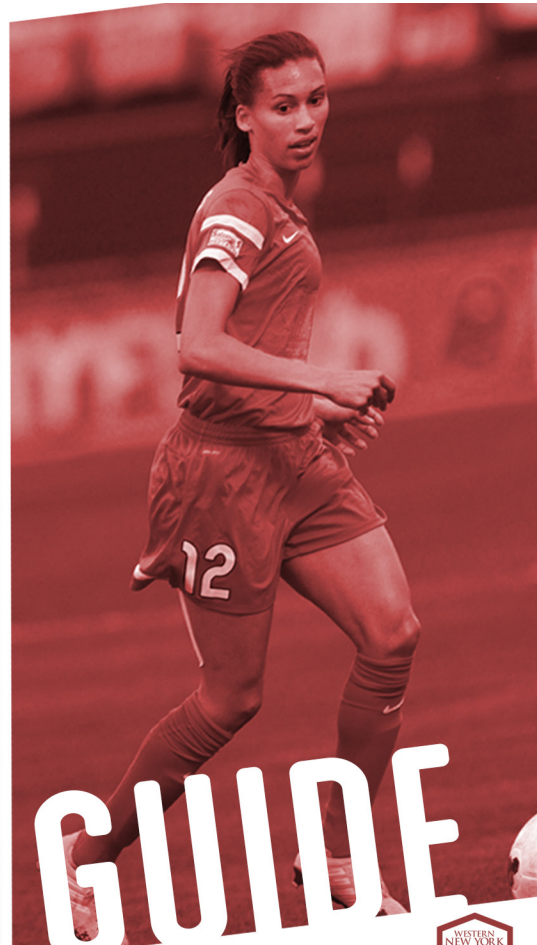


2015  
WESTERN NEW YORK FLASH



# MEDIA GUIDE

[WAYFLASH.COM](http://WAYFLASH.COM)



# 2015 FLASH SCHEDULE

GAME	DATE	OPPONENT	LOCATION	TIME (ET)
01	Sun., April 12	Seattle Reign FC	Moda Pitch at Memorial Stadium	7:00 p.m.
02	Sat., April 18	Portland Thorns FC	Providence Park	7:00 p.m.
<b>03</b>	<b>Sat., May 2</b>	<b>Boston Breakers</b>	<b>Sahlen's Stadium</b>	<b>7:00 p.m.</b>
<b>04</b>	<b>Fri. May 8</b>	<b>FC Kansas City</b>	<b>Sahlen's Stadium</b>	<b>7:00 p.m.</b>
05	Thurs., May 14	FC Kansas City	Swope Soccer Village	8:00 p.m.
<b>06</b>	<b>Sat. May 23</b>	<b>Washington Spirit</b>	<b>Sahlen's Stadium</b>	<b>7:00 p.m.</b>
<b>07</b>	<b>Sat., June 6</b>	<b>Chicago Red Stars</b>	<b>Sahlen's Stadium</b>	<b>7:00 p.m.</b>
08	Sat., June 20	Houston Dash	BBVA Compass Stadium	8:30 p.m.
09	Sun., June 28	Boston Breakers	Soldiers Field Soccer Stadium	5:00 p.m.
<b>10</b>	<b>Fri., July 3</b>	<b>Seattle Reign FC</b>	<b>Sahlen's Stadium</b>	<b>7:00 p.m.</b>
11	Sat., July 11	Seattle Reign FC	Moda Pitch at Memorial Stadium	10:00 p.m.
<b>12</b>	<b>Sun., July 19</b>	<b>Sky Blue FC</b>	<b>Sahlen's Stadium</b>	<b>3:00 p.m.</b>
<b>13</b>	<b>Sat., July 25</b>	<b>Houston Dash</b>	<b>Sahlen's Stadium</b>	<b>7:00 p.m.</b>
<b>14</b>	<b>Wed., July 29</b>	<b>Portland Thorns FC</b>	<b>Sahlen's Stadium</b>	<b>7:00 p.m.</b>
15	Sat., Aug. 1	Sky Blue FC	Yurcak Field	7:00 p.m.
16	Sat., Aug. 8	FC Kansas City	Swope Soccer Village	8:00 p.m.
17	Wed., Aug. 12	Washington Spirit	Maureen Hendricks Field Maryland SoccerPlex	7:00 p.m.
18	Sun., Aug. 23	Chicago Red Stars	Village of Lisle-Benedictine University	5:00 p.m.
<b>19</b>	<b>Sat., Aug. 29</b>	<b>Chicago Red Stars</b>	<b>Sahlen's Stadium</b>	<b>7:00 p.m.</b>
<b>20</b>	<b>Fri., Sept. 4</b>	<b>Portland Thorns FC</b>	<b>Sahlen's Stadium</b>	<b>7:00 p.m.</b>

<b>SECTION</b>	<b>PAGE</b>
About the Flash	4
2015 Club Directory	6
Sahlen's Stadium	7
Sahlen's Stadium Seating Chart	8
Ticket Information	9
Sahlen Sports Park	10
2015 Alphabetical Roster	11
2015 Numerical Roster	12
Coaching Staff Bios	13
Medical Staff Bios	18
Player Bios	25
Year-by-Year Results	44
Preseason Results	45
All-Time vs. NWSL	46
2013 Season Statistics	54
2014 Season Statistics	57
Team Records	60
Individual Records	61
Broadcast & Streaming Information	62
2015 Flash Media Contacts	63
NWSL Media Policies	65
2015 NWSL Directory	67
2015 NWSL Media Contacts	68
NWSL Rules & Regulations	69
NWSL Roster Rules	71
Complete NWSL 2015 Schedule	79

# TABLE OF CONTENTS



## 2008

Joe Sahlen, owner of Sahlen Packing Co., founded the Flash in 2008 - then known as the Buffalo Flash.

## 2009

The Buffalo Flash made its first competitive appearance in 2009 as a member of the W-League.

## 2010

In just its second season, the Flash became W-League Champions, defeating the Vancouver Whitecaps 3-1 at Harry Welch Stadium in Santa Clarita, California. With the team's stellar season, head coach Aaran Lines was named FieldTurf Coach of the Year.

## 2011

After its first title a year before, the Flash joined Women's Professional Soccer (WPS) as an expansion team. With the league change, the team became the Western New York Flash and moved its home pitch to Rochester, NY at the newly named Sahlen's Stadium. With its first pick in the 2011 WPS Draft, the Flash selected Alex Morgan and later signed 2010 WPS MVP and WPS Golden Boot winner Marta and Canadian star Christine Sinclair. After finishing the year 13-2-3, the Flash won the regular season title and hosted the 2011 WPS Championship. The Flash became back-to-back champions in that game, defeating the Philadelphia Independence in penalty kicks in front of a WPS record 10,461 fans.

Marta won the Golden Boot as the league's top scorer, while Ashlyn Harris was named US Coast Guard Goalkeeper of the Year and Whitney Engen was honored as the WPS Defender of the Year. Lines earned his second-consecutive FieldTurf Coach of the Year honor and the 2011 Flash squad was named FieldTurf WPS Team of the Year.

## 2012

After the WPS suspended operations, the Flash joined the WPSL-Elite in 2012 and continued its winning ways. The team won its third league title (all in different leagues) with another penalty kick decision. After finishing the regular season 9-3-2, the Flash earned the second seed in the WPSL-E playoffs and went on to defeat the New York Fury 1-1 (4-2 PKs).

In November of 2012, the Western New York Flash was selected as one of eight clubs for the then-un-named women's professional soccer league. That league would become the National Women's Soccer League, otherwise known as the NWSL.

### 2013

In the team's first season in the NWSL, the Flash claimed the Regular Season Championship and landed the Number 1 seed heading into the playoffs. After beating No. 4 Sky Blue FC 2-0 in the semifinals, the Flash hosted No. 3 Portland Thorns FC at Sahlen's Stadium for the league title on August 31, 2013. In that game, in front of a season-high 9,129 fans, the Flash finished as runner-up after falling 2-0 to the Thorns.

The Flash, who did not reach the top of the table until the final day of the regular season, were undefeated at home for 11-straight games. The club was only defeated in its home opener on April 27 and did not fall again until the NWSL Championship on August 31.

As a club, the Flash set numerous league records, ranking atop the NWSL in goals scored (36), goals conceded (30) and goals against average (.909). Forward Abby Wambach and defender Brittany Taylor were honored on the NWSL Best XI, while goalkeeper Adrianna Franch earned Second XI commendations.

### 2014

In its second season in the NWSL, the Flash failed to reach the playoffs for just the second time in franchise history. Despite a seventh place finish, the team had many high points, including a 5-0 shutout of Portland Thorns FC on June 7. At the time, it was the largest margin of defeat in NWSL history and also set the league record for largest win margin by a road team.

Midfielder Carli Lloyd was named to the Second XI after posting eight goals and five assists.

-----

*The Flash train out of Sahlen's indoor soccer facility, Sahlen Sports Park, in Elma, N.Y. The Flash colors are red, yellow and black, to represent the Sahlen entities: Sahlen Packing Co., Sahlen Sports Park, and Team Sahlen racing team.*



**FLASH BUSINESS OFFICE**

Sahlen Sports Park  
7070 Seneca Street  
Elma, NY 14059

**PHONE:** (716) 655-7529

**FAX:** (716) 655-3615

**FLASH WEBSITE:** [www.WNYFlash.com](http://www.WNYFlash.com)

**SSP WEBSITE:** [www.SahlenSportsPark.com](http://www.SahlenSportsPark.com)



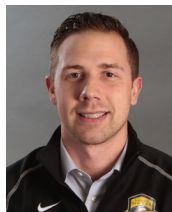
**JOE SAHLEN**  
Team Owner



**ALEX SAHLEN**  
President



**AARAN LINES**  
General Manager



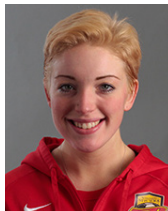
**MIKE CIPOLLA**  
Assistant General Manager



**JACKIE MAYNARD**  
Communications & Marketing  
Manager



**JOE LAVARE**  
Ticket Sales Manager



**AMANDA ZANGHI**  
Retail & Soccer Operations Manager



**MISSY TAYLOR**  
Administrative Assistant

## ABOUT SAHLEN'S STADIUM

The Flash will play all 2015 home games at Sahlen's Stadium in Rochester, NY. Formerly known as PAETEC Park and Marina Auto Stadium, Sahlen Packing Company claimed the naming rights in 2011 and the Rochester-owned stadium officially became known as Sahlen's Stadium. It has been home to the Western New York Flash since 2011.

The, primarily, soccer stadium is also home to the USL Pro team, the Rochester Rhinos. The stadium also hosts a number of other sporting events, such as collegiate soccer, Rochester Rhinos Elite youth soccer games, football, kickball, and field hockey. Additionally, it has been used for drum and bugle corps competitions and concerts.

The stadium's construction began in 2004 and was completed in 2006. It was funded jointly by the state of New York, the city of Rochester, and the Rochester Rhinos. It features a synthetic grass turf field and has a capacity of 13,768 seats. It has five permanent concession stands, featuring Sahlen's products, such as their hot dogs. There are also a number of outside vendors that have mobile kiosks set up around the park. The stadium is wheelchair friendly, and smoke-free within the seating bowl.

The stadium's highest attendance record of 15,404, was set on July 20, 2011 during a match between the WNY Flash and the magicJack. The above seating capacity number was allowed due to additional bleacher seats being added and standing room only tickets sold to accommodate the high demand. The game featured international superstar and Rochester native Abby Wambach of the magicJack, as well as other national team players coming home from the United States Women's National Team second place finish to Japan in penalty kicks at the 2011 FIFA Women's World Cup. The game was also the largest single-game crowd in WPS history.

## DIRECTIONS TO SAHLEN'S STADIUM

### *From the East*

1. Take I-90 WEST toward Buffalo
2. Take exit #45 onto I-490 WEST toward Rochester
3. Take exit #14 toward Plymouth Ave/Broad St
5. Turn left on West Broad St [RT-31]
6. Bear right to follow RT-31
7. Turn right on Smith St.
8. Arrive at Sahlen Stadium

### *From the West*

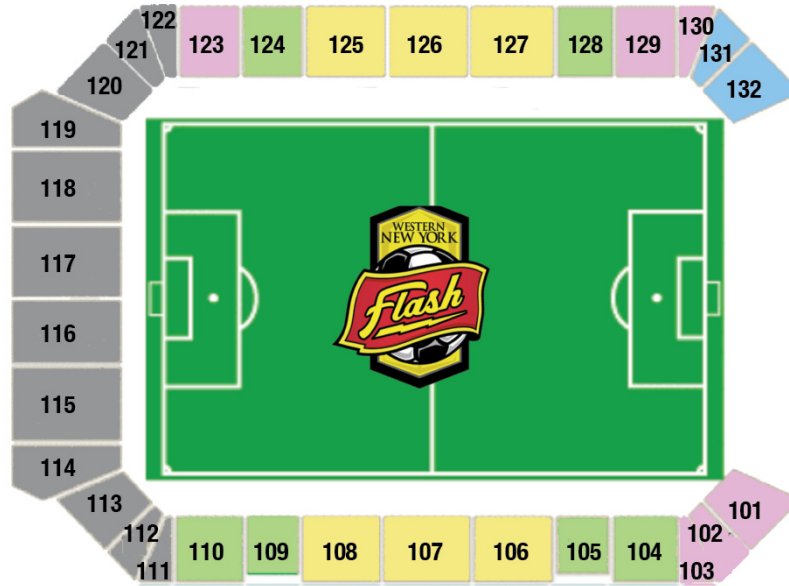
1. Take I-90 EAST toward Rochester
2. Take exit #47 onto I-490 EAST toward Rochester/Leroy
3. Take exit #12/Brown St onto Allen St toward Broad St.
4. Allen St becomes Platt St.
5. Turn left on Oak St.
6. Arrive at Sahlen Stadium

## PARKING AT SAHLEN'S STADIUM

Lot	Location
VIP	474 Smith Street, Rochester, NY
Club	418 Smith Street, Rochester, NY
Suite	872 Broad Street, Rochester, NY
Broad St. Grass	884 Broad Street, Rochester, NY
Broad St. Gravel	911 Broad Street, Rochester, NY



# 8 STADIUM SEATING CHART



**STADIUM LAYOUT**

**Level**

Field

Table

Club

Premium

Sideline

Family Section

General Admission

Flash Mob Supporter's Section

**Sections**

*On field, opposite benches*

*Located below 125-127*

*106-108, 125-127*

*104, 105, 109, 110, 124, 128*

*101-103, 123, 129, 130*

*131, 132*

*120-122*

*118*



## HOW TO PURCHASE

### Online

www.WNYFlash.com  
www.Ticketmaster.com

### In-Person

Sahlen's Stadium Box Office  
Sahlen Sports Park

### Phone

Flash Office: (716) 655-7529  
Box Office: (585) 454-5425  
Ticketmaster: (800) 653-800

## INDIVIDUAL TICKETS

Section	Cost
Field	\$50
Table for 4	\$160
Club	\$30
Premium	\$20
Sideline	\$15
General Admission	\$10
Flash Mob	\$10

## GROUP TICKETS (Group of 10 or more)

Section	Cost
Field	N/A
Table for 4	N/A
Club	\$20
Premium	\$14
Sideline	\$10
General Admission	\$7
Flash Mob	\$7

## TICKET PACKAGES

Section	Season Ticket	Big Ticket Pack	Flash Fridays Pack	Flex-8 Pack
Field	\$475	N/A	N/A	N/A
Table for 4	\$1500	N/A	N/A	N/A
Club	\$240	N/A	N/A	\$205
Premium	\$180	\$65	\$49	\$140
Sideline	\$140	\$50	\$39	\$115
General Admission	\$100	N/A	N/A	\$80
Flash Mob	\$100	N/A	N/A	\$80
Family Four Pack	\$350*	N/A	N/A	N/A

## GROUP TICKET OPPORTUNITIES

### *Dream Team*

The "Dream Team" is a one-of-a-kind experience offered by the Western New York Flash! Each game, one lucky group will have the opportunity to walk with the players out to the field for starting lineups and the national anthem. To be eligible for the Dream Team, groups must purchase a minimum of 50 tickets. All Dream Team selection will be done on a first-come, first-served basis.

### *Ball Crew*

The Flash are also looking for groups to serve as the ball crew for each of our 12 home games. The ball crew plays an important role in the game, as they assist players when soccer balls go out of play. The Ball Crew will be stationed on the field, just behind the advertisements. To be eligible for the ball crew, groups must purchase at least 50 tickets and crew members must be 12 years of age or older. Crew members will also receive a complimentary Flash t-shirt!

### *Field of Dreams*

Play on the same field as your favorite Flash players! Have your club participate in an intrasquad scrimmage during halftime of the Flash game!

### *Youth "High-Five" Tunnel*

Greet the Flash and the visiting team as they walk onto the field by forming a human tunnel, giving High-Fives to players along the way!

TICKET INFORMATION



## SAHLEN SPORTS PARK

7070 Seneca Street, Elma, NY 14059

**ABOUT SAHLEN SPORTS PARK** Official Training Home of the Flash  
Sahlen Sports Park, located in Elma, NY, just 15 minutes outside of Buffalo, is the official training home of the 2013 NWSL Shield-winning WNY Flash. Purchased by Joe Sahlen in 1999, the Sports Park is a 200,000 sq. ft. multi-sport indoor facility with three open fields including a full regulation-size soccer field, one boarded field, the STA Sports Performance Training fitness center, pro shop, and café. Recreational and advanced programs, as well as leagues, are offered for kids and adults in soccer, lacrosse, flag football, baseball, softball, and field hockey.

SSP sees more than 500,000 visitors each year and is also home to the Western New York Flash Academy. Over 4,100 players are registered annually (Sept.-Apr.) to participate in SSP's youth soccer leagues and programs, only a fraction of the 17,000 youth sports participants who play at Sahlen Sports Park each year.

For more information, visit [www.sahlensportspark.com](http://www.sahlensportspark.com) or stop by and check out the facility. Also be sure to "like" SSP on Facebook (<https://www.facebook.com/SahlensSP>) and follow SSP on Twitter (<https://twitter.com/SahlensSP>) and Instagram (<http://instagram.com/sahlenssp>).

### DIRECTIONS TO SAHLEN SPORTS PARK

#### From Rochester/Syracuse/Albany:

Take I-90 W to Exit 54 to merge onto NY-400 S toward East Aurora. Exit at Jamison Rd - Elma. Turn right on Jamison Rd. Turn left on Seneca St. Take the first right into SSP complex.

#### From Western Pennsylvania/Ohio:

Take I-90 E towards Buffalo. Take Exit 54 to merge onto NY-400 S toward East Aurora. Exit at Jamison Rd - Elma. Turn right on Jamison Rd. Turn left on Seneca St. Take the first right into SSP complex.

#### From Canada:

After crossing into the US, take I-190 S. Merge onto I-90 W. Take Exit 54 to merge onto NY-400 S toward East Aurora. Exit at Jamison Rd - Elma. Turn right on Jamison Rd. Turn left on Seneca St. Take the first right into SSP complex.

<b>NO.</b>	<b>NAME</b>	<b>POS.</b>	<b>HT.</b>	<b>DOB</b>	<b>HOMETOWN</b>	<b>COLLEGE/SCHOOL</b>
6	Jordan Angeli	M	5'9"	05/31/1986	Lakewood, Colo.	Santa Clara
1	Sabrina D'Angelo	GK	5'6"	05/11/1990	Welland, Ont.	South Carolina
4	Abby Dahlkemper	M	5'7"	05/13/1993	Menlo Park, Calif.	UCLA
12	Kristen Edmonds	D	5'5"	05/22/1987	Metuchen, N.J.	Rutgers
14	Becky Edwards	M	5'7"	05/22/1988	Downingtown, Pa.	Florida State
3	Whitney Engen	D	5'7"	11/27/1987	Torrance, Calif.	North Carolina
7	Amanda Frisbie	M	5'8"	05/29/1992	Keller, Tx.	Portland
17	Kristen Hamilton	F	5'4"	04/17/1992	Littleton, Colo.	Denver
16	Jaelene Hinkle	D	5'4"	05/28/1993	Denver, Colo.	Texas Tech
18	Chantel Jones	GK	5'11"	07/20/1988	Midlothian, Va.	Virginia
10	Camilla Kur	F	5'9"	04/03/1989	Ishøj, Denmark	N/A
22	Sydney Leroux	F	5'9"	05/07/1990	Vancouver, BC	UCLA
5	Samantha Mewis	M	5'11"	10/09/1992	Hanson, Mass.	UCLA
11	Ajara Nchout Njoya	F	5'6"	01/12/1993	Njisse, Cameroon	N/A
23	Toni Pressley	D	5'10"	02/19/1990	Melbourne, Fla.	Florida State
15	Jasmyne Spencer	F	5'1"	08/27/1990	Bay Shore, N.Y.	Maryland
19	Chelsea Stewart	D	5'5"	04/28/1990	Highlands Ranch, Colo.	UCLA
13	Brittany Taylor	D	5'8"	09/18/1987	Campbell Hall, N.Y.	Connecticut
9	Lynn Williams	F	5'7"	05/21/1993	Fresno, Calif.	Pepperdine

# ALPHABETICAL ROSTER





# NUMERICAL ROSTER

<b>NO.</b>	<b>NAME</b>	<b>POS.</b>	<b>PRONUNCIATION</b>	<b>BIRTHPLACE</b>	<b>LAST TEAM</b>
1	Sabrina D'Angelo	GK		Welland, Ont.	University of South Carolina
3	Whitney Engen	D	in-GEN	Torrance, Calif.	Houston Dash
4	Abby Dahlkemper	M	Ab-ee Duhl-kemp-er	Lancaster, Pa.	Houston Dash
5	Samantha Mewis	M	Mew-iss	Hanson, Mass.	UCLA
6	Jordan Angeli	M	Ann-gel-ee	Englewood, Colo.	Washington Spirit
7	Amanda Frisbie	M	Frizz-bee	North Richland Hills, Tx.	Seattle Reign FC
9	Lynn Williams	F		Fresno, Calif.	Pepperdine University
10	Camilla Kur	F	Kuh-mill-uh Kerr		Fortuna Hjørring
11	Ajara Nchout Njoya	F	Uh-jar-uh Shoot Joy-uh	Njisse, Cameroon	AS Police de Yaoundé
12	Kristen Edmonds	D	Chris-ten Ed-munds	Metuchen, N.J.	FC Rossiyanka
13	Brittany Taylor	D	Brit-knee Tay-lor	Campbell Hall, N.Y.	New York Fury
14	Becky Edwards	M	ED-words	West Chester, Pa.	Houston Dash
15	Jasmyne Spencer	F	Jazz-min Spen-sir	West Islip, N.Y.	Washington Spirit
16	Jaelene Hinkle	D	Jay-lean	Denver, Colo.	Texas Tech University
17	Kristen Hamilton	F		Littleton, Colo.	University of Denver
18	Chantel Jones	GK	Shan-tell	Brookhaven, N.Y.	Washington Spirit
19	Chelsea Stewart	D		Highlands Ranch, Colo.	INAC Kobe Leonessa
22	Sydney Leroux	F	Sid-knee Luh-rue	Surrey, BC	Seattle Reign FC
23	Toni Pressley	D	Toe-knee Press-lee	Melbourne, Fla.	Washington Spirit

# AARAN LINES Head Coach

*Lines will coach his seventh season at the helm of the WNY Flash.*

## Coaching Career

Lines has been a paramount figure in the success of the WNY Flash organization. In 2009, he was hired as the USL W-League Buffalo Flash's head coach where he led the squad to an impressive 10-3-3 record and a trip to the second round of the playoffs. In only his second year of the league, he led the squad to an undefeated season and a W-League Championship.

The WNY Flash joined Women's Professional Soccer(WPS) in 2010 where Lines was hired as Head Coach. The New Zealand native led the club to its decisive WPS Championship in 2011 with a star studded roster that included Marta-Brazil, Alex Morgan-USA, Caroline Seger-Sweden and Christine Sinclair-Canada. In 2010 he also paved the way for club to enter the WPS with a W-League Championship in an undefeated season. Western New York Flash capped their inaugural season in WPS by capturing the 2011 WPS Championship title 1-1 (5-4) in a penalty kick shootout in front of the largest championship crowd in league history.

Lines led players Whitney Engen (Defender of the Year) and Ashlyn Harris (Goalkeeper of the Year) to their first ever WPS year end awards. Four players made their debut in WPS under Lines (Brandao, Davison, Morgan and Sahlen) and the squad was the highest goal scoring team in the league and in WPS history with 43 goals. Marta received the Golden Boot award for the 2011 season. The WNY Flash went on to win their 3rd consecutive Championship in the WPSL Elite League(2012).

In 2013, the Flash were selected as one of eight teams for the inaugural season of the National Women's Soccer League. In the new pro league's first year, Lines took the Flash to yet another title game. After winning the 2013 Regular Season title, the Flash were able to contend for their fourth-straight title and host the NWSL Championship game at Sahlen's Stadium. The Flash claimed the top of the table on the final day of the regular season, the first time the club held the No. 1 ranking all year. The team would finish as runner-up to Portland Thorns FC, falling 2-0 in the Championship game.

## Coaching Awards

2010 W-League Champion  
2010 FieldTurf Coach of the Year  
2011 WPS Champion  
2011 FieldTurf Coach of the Year  
2012 WPSL-Elite Champion  
2013 NWSL Regular Season Champion

## International Playing Career

New Zealand Men's National Team (41 caps)  
U-23 squad (9 caps)  
U-20 squad (8 caps)  
U-17 squad (10 caps)

## Professional Playing Career

SV Werder Bremen, Auckland Football Kingz, Dresdener SC, Ruch Chorzow, Arka Gdynia, Portland Timbers (USL), Rochester Raging Rhinos (Appeared in 50 matches for the Rhinos including the 2006 USL Championship match).



## DANIEL CLITNOVICI Assistant Coach

*Clitnovici will coach his first season with the WNY Flash.*

Daniel enters his first season with the Western New York Flash in the 2015 NWSL season. Clitnovici joins the Western New York Flash from his 2014 head coaching role with Colorado Pride Women in the USL W-League and from his position as Director of Coaching for Northern Colorado Soccer Club.

His professional playing resume spans over 10 years and includes stints with Gold Coast United FC in Australia, Universitatea Craiova in Romania, Barnsley FC in England and Apollon Athinon in Greece. His final professional season came in 2008-09, playing in Spain for Elche CF and CF Illicitano.

After his playing career ended, he entered into the world of coaching. Professionally, he began his coaching career a head coach for the Colorado Rapids W-League Women, where he would compile a record of 25-10-3. During that span, he was also the Head Coach of the Colorado Rapids' U20 Girls to a 2012 USL U20 National Championship, the first national silverware that the club has won on the girls side to date.

Clitnovici would not stop there. In 2014, he became the head coach of the Colorado Pride Women in the USL W-League leading the inaugural season franchise to the Western Conference Championship game. Clitnovici built a fortress at home as the Colorado Pride Women had shutouts in all of their home games. His stellar coaching was rewarded as he was named 2014 W-League Coach of the Year.

In his personal time Daniel enjoys horse racing, playing tennis, and cheering on his favorite soccer teams, the WNY Flash, and Tottenham Hotspur.

His coaching education includes: US Soccer Federation "A" License, NSCAA Advanced National, FFA National Youth License, FFA Goal Keeping Level 1 License, and FFA Grass Roots Diploma.

## JASON COLLINSWORTH Second Assistant Coach

*Collinsworth will coach his first season with the WNY Flash.*

Collinsworth will begin his first season with the WNY Flash as the Second Assistant Coach.

Collinsworth has 10 years of coaching experience in many different levels of soccer. He has worked as a coach for the high school level for Birmingham HS, Farmington Hills HS, Detroit Country Day HS, and Lake Orion HS. He also was a Goalkeeper coach at the college level for the University of Detroit women's soccer team.

At the club level, he has helped coach Vadar, Lobos, Lake Orion Soccer Club, and Oakland F.C. He holds a USSF "C" License, NSCAA Premier Diploma, NSCAA Advanced National Goalkeeping Diploma, and Coerver Youth Diploma. He is also a part of the Olympic Developmental Program for the State of Michigan.





## DEMERIS JOHNSON Strength & Conditioning Coach

*Johnson enters his seventh season with the WNY Flash.*

Johnson enters his seventh season with the Flash in 2015. During the inaugural season of the NWSL in 2013, he kept the Flash fit and healthy to help lead the team to the first NWSL Shield as regular-season champions and all the way to the NWSL Championship game at Sahlen's Stadium where it would fall to Portland Thorns FC, 2-0.

Johnson has been an integral member of the coaching staff since the inception of the Flash organization in 2009. Then known as the Buffalo Flash, he helped the squad to a 10-3-3 record, reaching the second round of the W-League playoffs. In the following 2010 season, the team improved to record an undefeated season en route to the W-League Championship. In the Flash's first season as a member of the WPS in 2011, Johnson helped the team to the league Championship. In 2012, after the folding of WPS, the Flash captured the WPSL-Elite League title, their third consecutive championship.



## CHARLIE NAIMO Technical Director

*Naimo enters his first season as a member of the WNY Flash staff.*

Naimo enters into his first season with the Flash this year. He was previously the head coach of the LA Blues in the USL W-League. In his last season with the Blues, he would lead the team to a W-League title after an impressive undefeated season. The Blues have since announced that they will cease operations for the 2015 season.

Naimo founded the then-Pali Blues in 2007, and help guide them to five W-League titles in six seasons. In 2013, Pali merged with the LA Strikers, creating the now LA Blues.

Naimo has also served as the general manager of the Los Angeles Sol in 2009 in their lone season of operation, when they reached the WPS Championship game. After the Sol ceased operations, Naimo signed on as the technical director for the Chicago Red Stars the following year.



A vertical banner on the left side of the page. It features a dark red background with a pattern of white dots of varying sizes. The text 'Excelsior Orthopaedics' is written in a white, sans-serif font, with 'Excelsior' on the top line and 'Orthopaedics' on the bottom line. To the right of this, the words 'MEDICAL STAFF' are written in a large, white, bold, sans-serif font, stacked vertically.

## LISA A. DAYE, M.D. Team Doctor

Dr. Daye is a board certified orthopaedic surgeon, fellowship trained in sports medicine, arthroscopic surgery and soft tissue reconstruction. She is the Founder and Director of Excelsior's Women's Sports Medicine Program, which offers specialized care for female athletes. She is also Medical Director of the Buffalo Surgery Center and Excelsior Express urgent care.

A native Western New Yorker, Dr. Daye is a graduate of the University of Rochester and the University at Buffalo Medical School and Orthopaedic Residency programs. Following graduation from residency, she completed a sports medicine fellowship in Buffalo, providing care for the Buffalo Bills, Buffalo Sabres and Buffalo State College's football and hockey teams. She is a key player on the Excelsior Sports Medicine team, which provides athletic training services to 10 local high school sports programs. She has a special interest in female sports injuries.

## ANDREW C. STOECKL, M.D. Team Doctor

Dr. Stoeckl is a board certified orthopaedic surgeon and is President of the Excelsior Orthopaedics Board of Directors. He has extensive sports medicine experience working with professional, college and high school athletes including game coverage, injury prevention and injury care. He currently serves as Orthopaedic Consultant to the Buffalo Bisons (AAA Baseball), and has also worked with the New England Patriots, the Boston Bruins and Harvard University.

Originally from Buffalo, Dr. Stoeckl is a graduate of Boston College and the University at Buffalo Medical School. He completed his orthopedic residency at UB and earned the Casagrade Award for Outstanding Orthopedic Resident. Dr. Stoeckl was awarded a Harvard Sports Medicine Fellowship at Massachusetts General Hospital.



A vertical banner on the left side of the page. It features a dark red background with a pattern of white dots of varying sizes. The text 'Excelsior Orthopaedics' is written in a light red, sans-serif font, with 'Excelsior' on the top line and 'Orthopaedics' on the bottom line. Below this, the words 'MEDICAL STAFF' are written in large, white, bold, sans-serif capital letters, stacked vertically.

## JASON M. MATUSZAK, M.D. Team Doctor

Dr. Matuszak is a Primary Care Sports Medicine Physician, the Director of the Sports Concussion Center at Excelsior Orthopaedics and founder of the Excelsior Play Safe program. He sees patients with athletic/exercise related injuries or medical problems and has worked with professional, college and high school athletes. Dr. Matuszak is currently Associate Team Physician for the Buffalo Bisons (AAA Baseball), and has provided athletic coverage for the University of Hawaii, Syracuse University, the Honolulu Marathon, the Empire State Games, the Ironman Triathlon and Ironman Triathlon World Championships.

Originally from Medina, NY, Dr. Matuszak is a graduate of the State University of New York at Buffalo and the State University of New York Upstate Medical University at Syracuse. He completed his internship and residency in Family Medicine at St. Joseph's Hospital in Syracuse, NY and completed a fellowship in Sports Medicine at the John A. Burns School of Medicine, University of Hawaii.

## TODD M. LORENC, M.D. Team Doctor

Dr. Lorenc is a Primary Care Sports Medicine Physician. He sees patients with athletic/exercise related injuries or medical problems, and has worked with professional, college and high school athletes. He is currently a medical consultant for the Buffalo Bisons (AAA Baseball), and has provided athletic coverage for the University of Nevada-Reno, Syracuse University, Reno Rodeo and the NBA Developmental League's Reno Bighorns.

Originally from Alden, NY, Dr. Lorenc is a graduate of the Rochester Institute of Technology and the State University of New York Upstate Medical University at Syracuse. He completed his internship and residency in Family Medicine at St. Joseph's Hospital in Syracuse, NY and completed a fellowship in Sports Medicine at the University of Nevada-Reno.



A vertical banner on the left side of the page. It features a dark red background with a pattern of white dots of varying sizes. The text 'Excelsior Orthopaedics' is written in a white, sans-serif font, with 'Excelsior' on the top line and 'Orthopaedics' on the bottom line. Below this, the words 'MEDICAL STAFF' are written in a large, white, bold, sans-serif font, oriented vertically.

## KEITH FEIND, A.T.C. Athletic Trainer

Keith Feind is a Certified Athletic Trainer and a member of the Excelsior Sports Medicine team, which provides athletic training services to 10 local high school sports programs. Keith serves as the primary trainer for the St. Joseph's Collegiate Institute hockey program. He is a member of the National Athletic Trainers Association (NATA).

Originally from Cheektowaga, NY, Keith is a graduate of Stony Brook University.

## **JOSIE FISHER, P.T., A.T.C.** Physical Therapist

Josette Fisher has spent more than 20 years helping athletes of all ages and levels of competition to realize their full potential – working closely with them to prevent injuries, fully recover from any that do occur and improve their athletic performance.

A native of Western New York, Josie received her degree in Athletic Training at Canisius College, where she played Division 1 softball.

She then went on to the State University of New York at Buffalo, where she earned her degree in Physical Therapy, while also providing sports medicine outreach for several local high schools. Josie began her post-graduate, professional career managing a local sports medicine clinic.

Josette joined Excelsior Orthopaedics in 2004, and currently serves as the Director of Rehabilitation and Sports Medicine. At Excelsior, the focus of Josette and her team is on patient-centered, functional rehab and manual therapy in the context of a fully integrated model – with strong collaboration between physicians, PAs, therapists and athletic trainers. She has also established strong pro-active injury prevention and sports performance training programs.



## **BOB O'MALLEY** Coordinator of Outreach

O'Malley brings 25 years of experience in Sports Medicine as the team's Coordinator of Outreach.

Education: Temple University, MEd in Athletic Training/Sports Medicine.

Member of NATA: NYSATA Region 7 Representative

- Athletic Trainer for Williamsville South High School
- Born in New York City
- United States Olympic Committee: Sports Medicine Staff, Athletic Trainer 1993 - present.
- 2003 International Disabled Games: Quebec City, Quebec, Canada

Named to the medical staff for the following USA teams:

- 2000 Para-Olympic Games: Sydney, Australia. October 2000.
- 1999 Pan Am Games: Winnipeg, Manitoba. July 1999. (Assigned to USA Boxing)
- 1998 Goodwill Games: New York City, NY. July 1998. (Assigned to USA Swimming, Diving, Water Polo and Synchronized Swimming)
- 1997 World University Games: Catania, Sicily, Italy. August 1997. (Assigned to USA Fencing)
- 1996 Centennial Olympic Games: Atlanta, GA. July-August 1996. (Assigned to volleyball and women's soccer)
- 1995 United States Olympic Festival: Denver, CO. July 1995. (Assigned to the U.S. Women's Soccer National Team)



# #1 SABRINA D'ANGELO Goalkeeper

 @SabsDAngelo

**Date of Birth:** 05/11/1993

**Height:** 5' 7"

**Hometown:** Welland, Ontario

**College:** South Carolina

**Previous Team:** University of South Carolina

## Professional

**2015:** Selected by the Flash in the third round of the 2015 NWSL College Draft (No. 21 overall) ... Signed with the Flash as a Drafted Player.

## Canada Women National Team

**2012:** Named Canadian U-20 Female Player of the Year ... Represented Canada at the U-20 FIFA Women's World Cup ... Helped lead Canada to a silver medal at the CONCACAF U-20 Championship ...

**2010:** Won gold at the 2010 CONCACAF tournament ... **2008:** Won a bronze medal at the CONCACAF U-17 Championship

## College

D'Angelo graduated from the University of South Carolina ... **2014:** Became the first two-time NSCAA First Team All-American at South Carolina ... earned ALL-SEC honors every year ... honored as SEC Freshman of the Year and Co-Defensive Player of the Year ... Led the SEC with only 13 goals conceded ... In the first round of the NCAA tournament, she made a key save to allow her team to advance, but an injury kept her from playing during the remainder of the tournament ... **2013:** Started all 23 games in goal, playing every minute ... Recorded second most shutouts in a season in school history with 12 ... Ranked seventh nationally in shutouts and led the SEC ... Posted a 0.590 goals against average ... **2012:** Started in 16 of 17 matches ... Allowed 21 goals on 170 shots ... Made 55 saves ... **2011:** Started 20 of 21 matches ... Set freshman records for goals against average (0.800), save percentage (.824), games played (21), games started (20), and wins (14).



## #3 WHITNEY ENGEN Defense

**Date of Birth:** 11/27/1987

**Height:** 5' 7"

 @whitneyengen

**College Experience:** UNC

**Previous Team:** Houston Dash

**Hometown:** Torrance, CA

### Professional

**2015:** Acquired by the Flash via trade with Houston ... **2014:** Allocated to Houston by U.S. Soccer ... Played in 11 games for the Dash ... Played with the Swedish club Tyreso in the UEFA Women's Champions League ... **2013:** Played for the Liverpool Ladies, starting in 20 of 21 games ... Helped lead them to win the FA Women's Super League ... Played with Tyreso in the UEFA Women's Champions League ... **2012:** Signed with the Liverpool Ladies English club ... Played with the Pali Blues in the W-League during the summer ... **2011:** Played with the Flash in the WPS ... Helped lead the team to a WPS championship in its first year of existence ... played in 17 of the team's 18 regular season matches ... **2010:** Taken fourth overall by the Chicago Red Stars in the 2010 WPS Draft.

### United States Women's National Team

**2015:** Started and played in the USA's first two matches of the year against France on Feb. 8 and England on Feb. 13... Was named to the 2015 Algarve Cup roster that claimed the USA's 10th Algarve Cup title, but did not see any action and was replaced by Christie Rampone after suffering a hamstring injury during training in Portugal ... **2014:** Played 1,051 minutes in 13 games while starting 11 ... Scored two goals, finding the net against Mexico on a header off a corner kick that was assisted by childhood friend and youth soccer teammate Christen Press, and against Guatemala on a header from a set play in the opening match of the 2014 CONCACAF Women's Championship, where she helped the USA secure its berth to the Women's World Cup ... **2013:** Had her best year for the WNT to date, playing in eight games at center back while starting seven ... Scored her first international goal on March 8 against China PR at the Algarve Cup in Portugal ... **2012:** Did not play in a match for the U.S. WNT ... **2011:** Earned her first two senior team caps, coming off the bench against Norway and Finland during group play at the Algarve Cup in Portugal ... Trained extensively with the team in the lead up to the Women's World Cup ... **2010:** First call-up to the senior team came in March of 2010, and she trained with the team during matches against Mexico in San Diego and Salt Lake City, Utah ... Also called in to train in October of 2010 during two friendly matches against China

### College

Engen graduated from the University of North Carolina ... **2009:** Started all 27 games, scoring one goal and three assists ... Helped the Tar Heels win the NCAA title ... Won the NCAA's Honda award for top Collegiate Soccer Player ... **2008:** Started all 28 games as a center-back ... Led the team in minutes played with 2,518 ... Helped lead UNC to an NCAA title ... **2007:** Played striker and scored six goals and eight assists ... **2006:** Scored 12 goals and 13 assists in 27 games.

## #4 ABBY DAHLKEMPER Midfield

**Date of Birth:** 05/13/1993

**Height:** 5' 7"

**College Experience:** UCLA

**Previous Team:** UCLA

 @AbbyDahlkemper

**Hometown:** Menlo Park, CA

### Professional

**2015:** Selected by the Flash in the first round of the 2015 NWSL College Draft (No. 3) overall ... Signed a contract with the Flash on March 17.

### United States Women's National Team

**2015:** Played with the U-23 Women's National Team in La Manga Spain... **2014:** Member of the U.S. Women's U-23 national team ... Participated in the 2014 Six Nations Tournament, helping lead the team to the championship ... **2013:** Participated in the Four Nations Tournament with the U-23 team, helping them be crowned champions.

### College

Dahlkemper graduated from UCLA ... **2014:** Was a four-year letterwinner and finished her defensive career with five goals and 10 assists through 93 games with the Bruins ... Played defense for the UCLA squad that set a school record for least goals against in 2013 and 2014 ... Semifinalist for the MAC Hermann Trophy ... Pac-12 Defensive Player of the Year ... Started in all 24 games, playing 2,155 minutes ... Scored a goal and three assists ... **2013:** Finalist for the MAC Hermann Trophy ... Starter in all 24 of 25 games, playing in 2,194 or a possible 2,311 minutes ... Contributed a goal and two assists ... **2012:** Started in all 23 games and ranked second on the team in minutes played, with 2,016 ... Recorded three goals and three assists ... **2011:** Started in all 21 games ... Recorded two assists.

ABBY DAHLKEMPER





## #5 SAMANTHA MEWIS Midfield

**Date of Birth:** 10/09/1992

**Height:** 5' 11"

**College Experience:** UCLA

**Previous Team:** UCLA

 @sammymewy

**Hometown:** Hanson, MA

### Professional

**2015:** Selected by the Flash in the 2015 NWSL College Draft (No. 4 overall) ... Signed a contract on March 17.

### United States Women's National Team

**2015:** Played with the U-23 Women's National team in La Manga as they were victorious in the Six Nations Cup ... **2014:** Earned her first Full National Team appearance during the 2014 Algarve Cup ... Named a nominee for 2014 U.S. Soccer Young Player of the Year ... **2013:** Helped lead the U.S. U-23 team to a Four Nations Tournament Championship ... **2012:** Member of the FIFA World Championship U-23 Team ... **2008:** Earned a silver medal with the U-17 team in the FIFA Women's World Cup

### College

Mewis graduated from UCLA ... **2014:** Finished her career with 31 goals (ranking 9th in UCLA history), 32 assists (ranking 2nd in UCLA history) and 94 points (ranking 6th in UCLA history) ... Named to All-Pac-12 teams each year during her college career... named a finalist for the 2014 MAC Hermann Trophy ... Named espnW's National Player of the Year, Pac-12 Player of the Year, First Team NSCAA All-American, and First Team All-Pacific Region ... Won the Honda Award presented by the Collegiate Women Sports Awards for being "the best of the best in collegiate athletics." ... **2013:** Scored six goals, four of which were game-winners ... Tallied nine assists ... Tied the school record for single-game assists with three against USC and also scored the game-winning goal ... **2012:** Played and started 16 games ... Recorded three goals and three assists ... **2011:** Scored six goals and seven assists.

## #6 JORDAN ANGELI Midfield

**Date of Birth:** 05/31/1986

**Height:** 5' 9"

**Hometown:** Lakewood, CO

**College Experience:** Santa Clara **Previous Team:** Washington Spirit



### Professional

**2015:** Acquired by the Flash via trade with Washington ... **2014:** Appeared in 10 games for the Washington Spirit, starting in two ... **2013:** Selected in the third round (No. 17 overall) by the Washington Spirit in the NWSL Supplemental Draft, but was unable to play due to an injury ... **2011:** Played for the Boston Breakers in the WPS ... Scored the first goal of the season during the team's first match, but suffered a season-ending injury shortly after ... **2010:** Drafted by the Boston Breakers in the second round of the 2010 WPS draft (No. 16 overall) ... Appeared in all 22 matches (starting 17) ... Finished the season with seven goals.

### United States Women's National Team

**2006:** A member of the U-20 U.S. National Team ... Started three of four matches in the 2006 CONCACAF Qualifying Tournament, helping U.S. claim tournament title and qualify for the '06 FIFA U-20 Women's World Championship ... Assisted on two goals in qualifying

### College

Angeli graduated from Santa Clara University... **2009:** Named the 2009 WCC Defensive Player of the Year ... Earned All-WCC First Team Honors ... Received NSCAA All-West Region First Team recognition ... Named a Second Team NSCAA/ Adidas Scholar All-American ... Named to the All-WCC Academic Team ... Started all 23 games for the Broncos ... Led the team in goals (7), points (17), and game winners (4) ... **2008:** Missed season due to injury ... **2007:** Missed season due to injury ... **2006:** Named All-WCC Honorable Mention ... Finished season with two goals, seven assists, and 11 points ... **2005:** Moved to the forward position during the preseason ... Named to Soccer Buzz' All-West Region Second Team ... An All-WCC Second Team performer ... Led the squad with 12 goals and 29 points ... **2004:** Named a Soccer Buzz Freshman All-America second team member ... Honorable mention All-WCC selection ... Named to league's All-Freshman squad ... Soccer Buzz All-West Region freshman team honoree ... Started 17 contests and saw action in all 25 contests ... Added two assists.



## #7 AMANDA FRISBIE Midfield

**Date of Birth:** 05/29/1992

**Height:** 5' 8"

 @Frizzbie

**Hometown:** Keller, TX

**College Experience:** Portland

**Previous Team:** Seattle Reign FC

### Professional

**2015:** Acquired by the Flash in a trade with Seattle ... **2014:** Selected by Seattle in the first round of the 2014 NWSL College Draft (No. 7 overall) ... Missed the 2014 season due to injury.

### College

Frisbie graduated from the University of Portland ... **2013:** NSCAA First Team All-America, becoming Portland's first first-team All-American since 2009 ... MAC-Hermann Trophy Semifinalist ... Soccer America MVP's Second Team ... NSCAA All-West Region First Team ... Named the 2013 West Coast Conference Defender of the Year in her first year ever playing center back ... Helped the Pilots post nine shutouts on the year, while still finishing second on the team with eight goals ... Had four game-winners, an assist and 17 points ... **2012:** All-WCC First Team ... NSCAA All-West Region Team ... One of three players to start all 21 matches ... Led the league in goals (12) and points (33) and was tied for the lead in assists (9) ... **2011:** Appeared in 20 games, while making nine starts ... Tied for the team high with three game-winners, and was second with six goals ... Had two assists and 14 points ... **2010:** Appeared in 10 games off the bench ... Scored five goals on seven shots.

AMANDA FRISBIE

## #9 LYNN WILLIAMS Forward

Date of Birth: 05/21/1993

Height: 5' 7"

Hometown: Fresno, CA

 @lynnraenie

College Experience: Pepperdine Previous Team: Pepperdine University

### Professional

**2015:** Selected by the Flash in the 2015 NWSL College Draft (No. 6 overall) ... Signed a contract with the Flash on March 17th.

### United States Women's National Team

**2015:** Member of the U-23 Women's National team in La Manga during the Six Nations Cup ... Scored the game winner against England to lead her team to victory.

### College

Williams graduated from Pepperdine University ... **2014:** Accumulated 24 goals, 15 game-winning goals, and 398 shots, which ranks 1st in Pepperdine women's soccer history ... She also finished her career with 39 assists and 102 points, both which ranked her second in school history ... Led her team with 14 goals and 10 assists ... Led her team to an NCAA Sweet 16 appearance ... Earned her third straight All-WCC first team honor ... **2013:** Started the first 15 games of the season before suffering an injury... Finished the season with 11 goals and three assists ... **2012:** Led the team in shots with 97... Registered team-high five goals in WCC play ... **2011:** Started all 20 games as a true freshman ... Finished the season with six goals and eight assists.



## #10 CAMILLA KUR Forward

**Date of Birth:** 04/03/1989

**Height:** 5' 9"

 @Camilla\_Kur

**College Experience:** N/A

**Hometown:** Ishøj, Denmark

**Previous Team:** Fortuna Hjørring

### Professional

**2015:** Signed by the Flash as a Discovery Player ... **2014:** Played with Fortuna Hjørring in the Danish League ... Helped lead the team to a Danish Championship ... Appeared in 31 games for the Champions League and scored seven goals ... **2013:** Played with Fortuna Hjørring after signing a contract in late 2012 ... Scored 20 goals in 19 matches ... **2012:** Briefly played for the Colorado Rapids of the W-League before returning back to her home country ... Played with Brøndby IF for the remainder of 2012 ... Scored seven goals in 11 matches ... **2011:** Helped lead Brøndby IF to a Danish Cup title... **2009:** Began playing for Brøndby IF of the Danish Champions League ... Tallied 66 goals in three seasons in League and Cup competitions.

### Denmark Women's National Team

Has made five appearances for the Danish National Team between 2009-14.



## #11 AJARA NCHOUT NJOYA Forward

**Date of Birth:** 01/12/1993

**Height:** 5' 6"

**Hometown:** Njisse, Cameroon

**College Experience:** N/A

**Previous Team:** AS Police de Yaoundé

### Professional

**2015:** Signed by the Flash as a Discovery Player ... **2014:** Played with the AS Police de Yaounde in Cameroon ... **2011-2013:** Played in 37 matches with two Russian teams, Rossiyanka (2012-2013) and Energy Voronezh (2011-2012) ... Tallied seven goals in 37 appearances playing in Russia ... Led FC Rossiyanka to a Russian Premier League silver medal and an appearance in the UEFA Champions League Quarterfinal ... **2007-2010:** Played with Franck Rohliceck Douala in Cameroon.

### Cameroon Women's National Team

Has 25 appearances with the Cameroon National Team, scoring seven goals ... **2014:** Helped Cameroon qualify for the 2015 FIFA Women's World Cup after a second place finish in the 2014 CAF African Women's Championship ... **2012:** Played in all three matches with Cameroon in the 2012 Olympics in London ... 2010: Played for Cameroon in the CAF African Women's Championship ... The team made it to the semifinals.



## #12 KRISTEN EDMONDS Defense

**Date of Birth:** 05/22/1987

**Height:** 5' 5"

 @Kris10edmonds

**College Experience:** Rutgers

**Previous Team:** FC Rosiyanka

**Hometown:** Metuchen, N.J.

### Professional

**2014:** Played in her first season with the Flash after signing a contract on February 21, 2014 ... Appeared in all 22 games, starting in 19 of them ... Played 1739 minutes... Tallied one assists while playing defense for the club ... **2013:** Played with FC Rosiyanka of the Russian Premier League ... Scored two goals and added seven assists in 13 appearances ... Appeared in two contests in the UEFA Women's Champions League ... **2012:** Returned to the N.J. Wildcats in the W-League ... tallied one goal in 23 appearances ... **2011:** Played with Stjarnan of the Icelandic Football League ... Helped lead the team to a PepsiDelid League Championship ... **2009-2010:** Played with the Hudson Valley Quickstrike Lady Blues of the W-League ... Became co-captain in 2010 and helped lead the team to two regular-season championships ... Scored five goals and five assists in 25 appearances ... **2005:** Made four appearances with the N.J. Wildcats of the W-League ... Lead the team to a W-League championship ... Tallied two goals.

### College

Edmonds graduated from Rutgers University ... **2008:** Started in all 22 games, scoring five goals and six assists ... **2007:** Recorded two goals and one assist in 16 games ... **2006:** Tallied one goal and three assists ... **2005:** Scored six goals and six assists.

KRISTEN EDMONDS

# #13 BRITTANY TAYLOR Defense

**Date of Birth:** 09/18/1987

**Height:** 5' 8"

**Hometown:** Campbell Hall, NY

**College Experience:** UConn

**Previous Team:** New York Fury (WPSL-E)

## Professional

**2014:** Played in all 24 games with the Flash, logging the most minutes on the team ... Finished the season with two goals and one assist ... **2013:** Signed with the Flash for the inaugural season of the NWSL ... Played in 21 of 22 games ... Led Flash defense with three goals and four assists ... Named to the Best XI in the NWSL ... **2012:** Played in the WPSL-Elite for the New York Fury ... **2011:** Played her second-consecutive season with Sky Blue FC ... Had one assist after playing in every minute of Sky Blue's 18 games ... **2010:** Selected in the First Round of the 2010 WPS Draft by Sky Blue FC (No. 6 overall) ... Made her debut in the WPS playing for Sky Blue FC ... Made 42 appearances for the club, scored two goals and was named a WPS All-Star ... **2009:** Played in the W-League for the Hudson Valley Quickstrike Lady Blues ... Scored three goals through nine appearances.

## United States Women's National Team

**2011:** Earned her first career start and second career cap with the U.S National Team in a game against Canada at the Four Nations Cup ... **2010:** Made her first appearance with the National Team, coming in as a 79th-minute substitute for Cat Whitehill in a 1-0 win over Mexico on March 31, 2010 ... **2007:** In her sophomore year of college, was called up to attend two U-21 National camps ... Won a silver medal at the Pan Am Games with the U-20 team ... **2006:** Began playing for the U-20 National team and participated in the 2006 Nordic Cup with the team ... In high school, played for the U-17 U.S National team.

## College

Taylor attended the University of Connecticut ... **2009:** In her final year as a Husky, was named the Big East Defensive Player of the Year, earned All-Big East First Team Honors and was named to the TopDrawerSoccer Second Team of the Season ... Totaled seven points on one goal and five assists ... **2008:** Medically redshirted the 2008 season ... **2007:** Moved to playing defense full time and started all 22 games of the season ... Became the 26th UConn women's soccer player to earn All-America honors ... Was named to the All-Big East First Team, the NEWISA All-New England First Team, the NSCAA All-Northeast Region First Team and Soccer Buzz All-Northeast Region First Team ... In addition, was named Big East Defensive Player of the Year and was named to the MAC Hermann Trophy watch list in preseason ... **2006:** Started all 21 games she played in and was fourth on the team in points with 16 ... Finished the season tied for first with seven goals ... For the second half of her sophomore season, she played on the back line, helping the Huskies defense that only allowed two goals throughout their final seven regular season games ... Was selected to the All-Big East First Team and was named to the Soccer Buzz All-Region First Team ... Earned NSCAA/Adidas All-Northeast Region First Team accolades and was recognized with NEWISA All-New England Second Team honors ... **2005:** Played in all 22 games and started 21 ... Led the team with eight goals and tied for first on the team in points with 17 ... Scored seven game-winning goals, leading the team and the Big East ... Named to the All-Big East First Team, the NSCAA All-Northeast Second Team and the NEWISA All-New England Second Team ... Was also named the UConn Classic Defensive Player of the Tournament ... Soccer Buzz Rookie of the Year Finalist.

BRITTANY TAYLOR



# #14 BECKY EDWARDS Midfield

**Date of Birth:** 05/22/1988

**Height:** 5' 7"

 @BeckyEdwards14

**Hometown:** Downingtown, PA

**College Experience:** Florida State **Previous Team:** Houston Dash

## Professional

**2015:** Acquired by the Flash via trade with the Houston Dash ... **2014:** Selected by the Houston Dash in the 2014 NWSL Expansion Draft (No. eight overall) ... Appeared in 18 games and tallied 2 assists ... **2013:** Signed as a Free Agent with the Portland Thorns ... Played 10 matches before sustaining a season-ending ACL injury on June 13 ... Named the 2013 Community Player of the Year for her community service in the Portland Area ... **2012:** Signed with Kristianstads DFF of the Swedish Damallsvenskan League ... Recorded two goals in 18 matches ... **2011:** Signed with the Flash in the WPS league ... Scored three goals in 19 matches ... Led the team to a WPS Championship ... Signed a short-term deal with Hammarby IF in Sweden at the end of the 2011 season ... **2010:** Selected by FC Gold Pride, in the 2010 WPS Draft (No. 12 overall) ... Made 25 appearances in her rookie year and helped lead her team to a WPS championship.

## United States Women's National Team

**2011:** Named to her first U.S. Women's National Team training camp roster in November 2011 ... Did not participate in the team's friendly that year, but has extensive experience with many U.S. Youth National Teams ... **2008:** Claimed a gold medal as a member of the U.S. U-20 Women's National Team that captured the FIFA Youth World Cup in Chile ... **2005:** Began her national career when she played on the U-17 team.

## College

Edwards graduated from Florida State University ... **2009:** Captained the Seminoles and was named a semifinalist for the MAC Hermann Trophy ... Finished her collegiate career fifth all-time at FSU in career starts (89) and tied for third in all-time appearances (95) ... Became the second player in school history to record a hat trick on opening day, in FSU's 7-0 win over Jacksonville ... **2008:** Appeared in 17 games while making 12 starts ... Tallied three points on a goal and an assist in over 1,300 minutes of action ... Played an integral role in the Seminole backline which gave up just 15 goals all season, the fewest allowed in school history ... **2007:** Started in all 27 games ... Led the team in minutes played with 2,448 ... Scored three goals and three assists ... Started all six games in Florida State's run to its first national championship game appearance ... **2006:** Started 25 more games than any other freshman ... Finished the season with one goal and eight assists ... Broke the freshman record for game-winning assists.

BECKY EDWARDS

## #15 JASMYNE SPENCER Forward



**Date of Birth:** 08/27/1990

**Height:** 5' 1"

**Hometown:** Bay Shore, NY

**College Experience:** Maryland **Previous Team:** Washington Spirit

### Professional

**2014:** Signed with the Flash as a Discovery Player and appeared in 22 contests (starting 9 of them) ... Scored three goals and tallied one assist ... Signed with Sydney FC of the Australian W-League in the offseason... Finished third in the W-League with eight goals scored ... **2013:** Signed with the Washington Spirit for the NWSL inaugural season ... Appeared in 17 contests, starting in six, recording one assist ... **2012:** Joined Brøndby IF of Denmark, making two appearances in the UEFA Women's Champions League ... Also played for the New York Fury of the WPSL-Elite League.

### College

Spencer graduated from the University of Maryland ... **2011:** Finish career ranked Top Ten in school history in four categories: points (50), goals (20), shots (150), and game-winning goals (8) ... Three-time All-ACC honoree ... Appeared in 19 games, starting 18 ... Recorded two goals and four assists ... Named to All-ACC Second Team ... **2010:** Started in all 23 games, scoring 10 goals and five assists ... **2009:** Started in all 22 games, scoring 10 goals and five assists ... Named Soccer America MVP ... **2008:** Appeared in 12 games, starting five.





## #16 JAELENE HINKLE Defense

**Date of Birth:** 05/28/1993

**Height:** 5' 4"

 @JaeHinkle\_15

**Hometown:** Denver, CO

**College Experience:** Texas Tech **Previous Team:** Texas Tech University

### Professional

**2015:** Selected by the Flash in the 2015 NWSL College Draft (No. 7 overall) ... Signed a contract with the Flash on March 17.

### United States Women's National Team

**2015:** Played with the U-23 Women's National team in La Manga ... Helped lead the team to a victory in the Six Nations Cup ... **2014:** Played with the U-23 Women's National Team in Spain ... **2010:** Began her International career with the U-17 Women's National Team

### College

Hinkle attended Texas Tech ... **2014:** Played in 84 games for the Red Raiders, accumulating one goal and 19 assists ... Became the first Texas Tech player to be named Big-12 Scholar Athlete of the Year, also earning Academic All-American honors ... helped anchor a defense that posted nine shutouts and a third post season appearance in her four years at Texas Tech ... **2013:** Appeared in 19 matches, starting in 17 ... Member of a Tech backline that posted a school record 17 shutouts ... Led the Red Raiders with six assists ... **2012:** Started all 23 games ... Recorded five assists ... **2011:** Played in 20 matches with 19 starts ... Led the Red Raiders with four assists ... Scored her first career goal against Hofstra.

# #17 KRISTEN HAMILTON Forward

 @khamilton17

**Date of Birth:** 04/17/1992

**Height:** 5' 4"

**Hometown:** Littleton, CO

**College Experience:** Denver

**Previous Team:** University of Denver

## Professional

**2015:** Signed by the Flash as a Discovery Player ... **2014:** Selected in the fourth round by the Flash in the 2014 NWSL College Draft (No. 36 overall) ... Did not play in the 2014 season due to an ACL injury.

## College

Hamilton graduated from the University of Denver ... **2013:** Semifinalist for the MAC Hermann trophy ... Started all 21 games, playing 1,784 minutes ... Scored 14 goals and 13 assists, including four game-winning goals ... **2012:** Started all 24 games, playing 1,917 minutes ... Scored 14 goals and seven assists ... **2011:** Started all 21 games ... Scored 16 goals, third highest in program history ... Tallied 9 assists ... Scored six game-winning goals ... **2010:** Started in all 22 games ... Scored seven goals.

KRISTEN HAMILTON





# #18 CHANTEL JONES Goalkeeper

 @Chantel\_Jones29

**Date of Birth:** 07/20/1988

**Height:** 5' 11"

**Hometown:** Midlothian, VA

**College Experience:** Virginia

**Previous Team:** Washington Spirit

## Professional

**2015:** Acquired by the Flash via trade with Washington ... **2014:** Started five games for the Washington Spirit ... Posted a 0-4-1 record and allowed 12 goals in five appearances ... Appeared in 13 games for Canberra United of the Australian W-League in the off-season ... Led Canberra to a W-League title... Made a key save against Perth Glory in the penalty kicks to ensure Canberra's trip to the finals ... Made another key penalty kick save against Perth Glory in the finals to help secure Canberra's title ... **2013:** Signed as a Free Agent with the Washington Spirit during the NWSL inaugural season ... Appeared in four games, posting one win and three losses, allowing six goals ... **2012:** Played in Iceland, appearing in all 18 games for Akureyri.

## United States Women's National Team

**2009:** Member of the United States U-23 National Team ... **2008:** Member of the 2008 United States U-20 World Cup team in Chile ... **2007:** Played for the U.S. at the 2007 Pan American Games in Brazil ... **2005:** Played for the U.S. U-16 & U-17 Women's National Teams.

## College

Jones graduated from the University of Virginia ... **2011:** Started all 24 games of the season ... Posted a .770 goals against average ... Had 14 shutouts ... Broke NCAA career shutout record with 47 career shutouts ... **2010:** Started 22 games of the season... Posted a .670 goals against average ... Had 10 shutouts ... 2010 NSCAA All American Fourth Team ... 2010 ACC First Team ... 2010 NSCAA All South-east Region First Team ... **2009:** First Team VASID All-State ... Started all 22 games of the season ... Had 10 shutouts ... Posted a 0.770 goals against average ... **2008:** Missed the season due to injury ... **2007:** First Team SoccerBuzz and Soccer America Freshman All-American... 2nd Team SoccerBuzz and 3rd Team NSCAA All-Mid Atlantic Region ... Second Team All-ACC ... VASID State Rookie of the Year ... First Team VASID All-State ... Started all 23 games of the season ... Tied a school single-season record with 13 shutouts ... Set a school single-season record and ranked third nationally with a 0.410 goals against average ... In September, set a school record with a 748:07 shutout streak ... Played 2204 minutes, the most by a Cavalier goalkeeper in a season.



# #19 CHELSEA STEWART Defense

 @cbstewart19

**Date of Birth:** 04/28/1990

**Height:** 5' 5"

**Hometown:** Highlands Ranch, CO

**College Experience:** UCLA

**Previous Team:** INAC Kobe Leonessa

## Professional

**2015:** Signed with the Flash as a Discovery Player ... **2014:** Allocated to Boston by the Canadian Women's National Team ... Appeared in 10 games (seven starts) in 2014 ... Played 512 minutes ... Made her NWSL debut on May 3, 2014, in a 1-0 loss at Sky Blue FC.

## Canada Women's National Team

Has more than 40 caps for Canada ... **2012:** Won a bronze medal at the London Olympics with the senior Canadian Women's National Team ... **2011:** Chosen to represent Canada at the FIFA Women's World Cup in Germany ... **2008:** Represented Canada at the FIFA Under-20 Women's World Cup in Chile, scoring two goals ... Helped Canada win a gold medal at the 2008 CONCACAF Women's Under-20 World Championships in Puebla, Mexico.

## College

Stewart attended UCLA ... **2013:** Played in 26 games and made seven starts ... Totaled three assists ... **2012:** Played in 20 games and made 15 starts ... Totaled four assists... Helped lead a UCLA defense that surrendered a PAC-12 best 13 goals all season ... **2011:** Transferred to UCLA ... Appeared in 20 matches, starting 19 ... Ended the season with nine points on two goals and five assists ... **2010:** Redshirted due to commitments with the Canadian National Team ... **2009:** Played at Vanderbilt for her freshman season ... Started 18 games ... Tallied three goals and one assist.



## #22 SYDNEY LEROUX Forward

**Date of Birth:** 05/07/1990

**Height:** 5' 7"

 @sydneyleroux

**College Experience:** UCLA

**Previous Team:** Seattle Reign FC

**Hometown:** Scottsdale, Ariz.

### Professional

**2015:** Acquired by the Flash in a trade with Seattle Reign FC ... **2014:** Acquired by Seattle in a trade with Boston ... Appeared in 22 games, starting in 21 ... Tallied five goals ... **2013:** Allocated to the Boston Breakers for the inaugural NWSL season ... Tallied 11 goals and two assists in 19 games ... **2012:** Taken with the first pick in the 2012 WPS Draft by the Atlanta Beat, but never played after the league ceased operations ... **2011:** Played with the W-League Vancouver Whitecaps in her hometown during the summer, scoring 11 goals in 11 games with two assists.

### United States Women's National Team

**2014:** Made 21 appearances, scoring nine goals and adding five assists ... Set career highs in games started (15), minutes played (1,308) and assists (5) ... **2013:** Member of the 2013 Women's National Team that won the Algarve Cup ... **2012:** Had a breakout year, playing in 27 games, all as a reserve, and set a U.S. record for most goals as a substitute with 14, which were the first 14 of her career ... Averaged a goal for every 37 minutes she was on the field ... In her second career cap against Guatemala at CONCACAF Olympic qualifying, she scored the first five goals of her career, all in the second half, in her hometown of Vancouver, Canada ... Played in three games during Olympic qualifying as the USA won the regional title ... Scored 14 goals ... Member of the Olympic team and Algarve Cup team that year ... **2011:** One of the most dangerous forwards in the world at the U-20 level, finished her U-20 career as the USA's most-capped player (39) and tied (with Lindsey Horan and Kelley O'Hara) for highest scorer at this level (24) ... The USA's all-time leading scorer in U-20 Women's World Cups with 10 goals ... Member of the U-20 Women's National Team ... Finished her U-20 career as the USA's most capped player ... **2010:** Played in 18 international matches ... Participated in the U-20 Women's World Cup ... Scored 17 goals ... Member of the U.S. team that won the 2010 CONCACAF U-20 Women's Championship ... **2008:** Pivotal member of the U-20 Women's Team that won the World Cup in Chile.

### College

Leroux graduated from UCLA ... **2011:** Was named First-Team NSCAA All-American and Soccer America MVP First Team ... Led the team in scoring for the third-straight season ... Led the Pac-12 in game-winning goals with eight ... Came in second in the voting for Pac-12 Player of the Year and was named to the All-Pac-12 First Team ... Had four multiple-goal games and two hat tricks on the season ... She finished her college career ranked in the top 5 at UCLA in several offensive categories, including points (126 - 4th), goals (57 - 4th) and game-winning goals (23 - 4th) ... **2010:** Played in 20 games and was the team's leading scorer with 13 goals and one assist ... Named a First-Team Soccer America MVP ... Named a Third-Team NSCAA All-American and a First-Team All-Pac-10 selection ... **2009:** Led the team in scoring with 23 goals and two assists ... Her 23 goals tied the school single-season record previously set by Lauren Cheney in 2007 ... Was named an NSCAA Third-Team All-American and Second-Team All-Pac-10 selection ... Set UCLA single-season records for both points and goals in NCAA Tournament play, registering 16 points on eight goals during the 2009 NCAA Championships ... Tied the school's single-game record for goals, scoring four in a 7-1 victory against Boise State in the NCAA First Round ... **2008:** Was a member of the Pac-10 All-Freshman Team, but missed all five of UCLA's matches during the NCAA Tournament while leading the U.S. to the FIFA U-20 world title ... Scored her first collegiate goal in the team's season opener, tallying the game winner in a 2-1 victory against UC Santa Barbara.

## #23 TONI PRESSLEY Defense

**Date of Birth:** 02/19/1990

**Height:** 5' 10"

**Hometown:** Melbourne, FL

**College Experience:** Florida State **Previous Team:** Washington Spirit



### Professional

**2015:** Acquired by the Flash via trade with Washington ... **2014:** Appeared in nine contests for the Spirit, started eight ... **2013:** Signed with the Washington Spirit during the NWSL inaugural season ... Started eight games ... Played with the Russian club Ryazan VDV before signing with the Spirit ... **2012:** Played for the Flash in the WPSL Elite league as a center back ... Helped lead the team to a league championship after scoring the equalizer in the final minute of stoppage time in the championship match ... **2009-2010:** Made eight appearances for the Washington Freedom Futures of the W-League ... Recorded one assist ... **2008:** Played with the Boston Renegades of the W-League ... Appeared in five contests.

### United States Women's National Team

**2011:** Participated in the Three Nations Tournament with the U-23 team ... **2010:** Helped lead the Women's U-20 squad to the Four Nations Cup title ... Started and played every minute of every game ... Member of the U-20 squad that made it to the quarterfinals in the 2010 FIFA World Cup ... **2009:** Participated with the U-20 squad during the Ten Nations Tournament ... Member of the U.S. U-20 team that captured gold at the CONCACAF Qualifier.

### College

Pressley graduated from Florida State University ... **2011:** Finished her career tied for third in programs history in appearances with 96 ... Named to the NSCAA All-American Third Team and ACC All-Tournament Team ... **2010:** Named Soccer America MVP, First-Team All-American, NSCAA All-American Fourth Team, and All-ACC First Team... Ranked 41 on the Top Drawer National Top 100 Women ... **2009:** Started all 25 games ... Totaled over 2300 minutes on the pitch ... One of five Florida State players to start every game in 2009 ... Led all Seminole defenders with 10 points scoring two goals and six assists...Set season-highs for points and assists while tying a season-high for game-winning goals ... **2008:** Named to the All-ACC Second team as a freshman.



## 2013 RESULTS

Gm.	Dt.	Res.	Home	Away
1	4/14	L	Sky Blue FC (1)	WNY Flash (0)
2	4/20	D	Washington Spirit (1)	WNY Flash (1)
3	4/27	L	WNY Flash (1)	Boston Breakers (2)
4	5/1	W	WNY Flash (2)	Sky Blue FC (1)
5	5/11	W	WNY Flash (2)	FC Kansas City (1)
6	5/24	W	WNY Flash (2)	Chicago Red Stars (1)
7	6/5	D	Boston Breakers (2)	WNY Flash (2)
8	6/8	W	Sky Blue FC (0)	WNY Flash (3)
9	6/15	W	Washington Spirit (0)	WNY Flash (2)
10	6/19	D	Chicago Red Stars (2)	WNY Flash (2)
11	6/23	D	WNY Flash (1)	Seattle Reign (1)
12	6/28	W	WNY Flash (4)	Washington Spirit (0)
13	7/4	L	Chicago Red Stars (1)	WNY Flash (0)
14	7/7	D	FC Kansas City (0)	WNY Flash (0)
15	7/11	L	Seattle Reign FC (3)	WNY Flash (2)
16	7/14	D	Portland Thorns FC (1)	WNY Flash (1)
17	7/21	W	WNY Flash (3)	Sky Blue FC (0)
18	7/31	W	WNY Flash (3)	Washington Spirit (0)
19	8/3	D	Boston Breakers (2)	WNY Flash (2)
20	8/7	W	WNY Flash (1)	Seattle Reign FC (0)
21	8/10	D	WNY Flash (0)	Portland Thorns FC (0)
22	8/17	W	WNY Flash (2)	Boston Breakers (1)
23*	8/24	W	WNY Flash (2)	Sky Blue FC (0)
24^	8/31	L	WNY Flash (0)	Portland Thorns FC (2)

\*NWSL Semifinal

^NWSL Championship

**Home Record:** 9-2-2

**Away Record:** 2-3-6

**Overall Record:** 11-5-8

## 2014 RESULTS

Gm.	Dt.	Res.	Home	Away
1	4/13	W	Washington Spirit (1)	WNY Flash (3)
2	4/19	L	Chicago Red Stars (1)	WNY Flash (0)
3	5/3	D	WNY Flash (1)	Portland Thorns FC (1)
4	5/7	W	WNY Flash (2)	FC Kansas City (1)
5	5/11	W	WNY Flash (2)	Sky Blue FC (0)
6	5/17	L	Washington Spirit (3)	WNY Flash (2)
7	5/21	L	Portland Thorns FC (2)	WNY Flash (1)
8	5/25	D	Seattle Reign FC (2)	WNY Flash (2)
9	5/31	L	WNY Flash (1)	Houston Dash (2)
10	6/4	L	FC Kansas City (1)	WNY Flash (0)
11	6/7	W	Portland Thorns FC (0)	WNY Flash (5)
12	6/11	L	Houston Dash (2)	WNY Flash (1)
13	6/18	W	WNY Flash (2)	Chicago Red Stars (0)
14	6/22	L	WNY Flash (1)	Seattle Reign FC (2)
15	6/27	W	WNY Flash (2)	Boston Breakers (1)
16	7/2	L	WNY Flash (1)	Seattle Reign FC (2)
17	7/5	W	Houston Dash (1)	WNY Flash (4)
18	7/12	L	WNY Flash (0)	Washington Spirit (1)
19	7/18	D	WNY Flash (1)	FC Kansas City (1)
20	7/25	L	WNY Flash (2)	Boston Breakers (4)
21	7/31	L	Sky Blue FC (1)	WNY Flash (0)
22	8/3	W	Boston Breakers (3)	WNY Flash (4)
23	8/13	L	WNY Flash (2)	Sky Blue FC (3)
24	8/16	D	Chicago Red Stars (3)	WNY Flash (3)

**Home Record:** 4-6-2

**Away Record:** 4-6-2

**Overall Record:** 8-12-4



# PRESEASON RESULTS

## ALL-TIME PRESEASON RESULTS

YEAR	RECORD
2013	4-0-0
2014	3-0-1
2015	3-0-0

## 2013 PRESEASON RESULTS

DATE	OPPONENT	RESULT	GOALSCORERS
3/15/2013	Canisius College	W, 3-0	Grove, Zerboni
3/23/2013	Penn State University	W, 7-0	Adriana (15', 67'), Wambach (19'), Dimartino (21'), Kerr (64'), Robinson (79', '85)
3/30/2013	Ohio State University	W, 4-0	Kerr (42'), Adriana (45'), Perez (69'), Adriana (74')
4/7/2013	University of North Carolina	W, 2-1	Kerr (82'), Adriana (87')

## 2014 PRESEASON RESULTS

DATE	OPPONENT	RESULT	GOALSCORERS
3/14/2014	University at Buffalo	W, 1-0	Smith (62')
3/22/2014	West Virginia University	W, 2-0	Lloyd (24', 90')
4/5/2014	Syracuse University*	D, 0-0	
4/5/2014	Colgate University*	W, 3-0	Kerr (5'), Meier (18'), Spencer (42')

\*Denotes 45-minute game

## 2015 PRESEASON RESULTS

DATE	OPPONENT	RESULT	GOALSCORERS
3/14/2015	West Virginia University	W, 4-0	Mewis (44'), Edmonds (53'), Spencer (61'), L. Williams (69')
3/28/2015	Syracuse University	W, 8-1	Pressley (10'), Own Goal (34') Spencer (40'), Angeli (45+'), Edmonds (50'), Mewis (52', 74'), Njoya (90')
4/4/2015	Penn State University	W, 5-0	Kur (27'), Hamilton (60', 75'), Mewis (67', 87')



ALL-TIME VS. BOSTON

### GAME-BY-GAME VS BOSTON BREAKERS

	DATE	LOCATION	RESULT
2013	4/27/13	Home	L, 2-1
	6/5/13	Away	D, 2-2
	8/3/13	Away	D, 2-2
	8/17/13	Home	W, 2-1
2014	6/27/14	Home	W, 2-1
	7/25/14	Home	L, 4-2
	8/3/14	Away	W, 4-3

### HOME VS BOSTON

	WIN	LOSS	DRAW
2013	1	1	0
2014	1	1	0
<b>TOTAL</b>	<b>2</b>	<b>2</b>	<b>0</b>

### AWAY VS BOSTON

	WIN	LOSS	DRAW
2013	0	0	2
2014	1	0	0
<b>TOTAL</b>	<b>1</b>	<b>0</b>	<b>2</b>

### ALL-TIME VS BOSTON

	WIN	LOSS	DRAW
2013	1	1	2
2014	2	1	0
<b>TOTAL</b>	<b>3</b>	<b>2</b>	<b>2</b>

## GAME-BY-GAME VS CHICAGO RED STARS

	DATE	LOCATION	RESULT
2013	5/24/13	Home	W, 2-1
	6/19/13	Away	D, 2-2
	7/4/13	Away	L, 1-0
2014	4/19/14	Away	L, 1-0
	6/18/14	Home	W, 2-0
	8/16/14	Away	D, 3-3

## HOME VS CHICAGO

	WIN	LOSS	DRAW
2013	1	0	0
2014	1	0	0
<b>TOTAL</b>	<b>2</b>	<b>0</b>	<b>0</b>

## AWAY VS CHICAGO

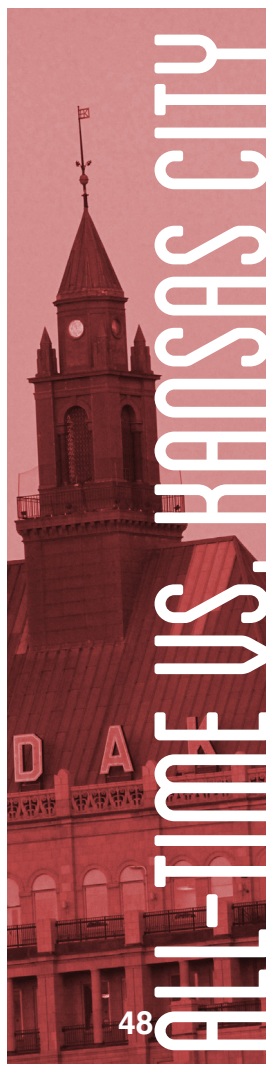
	WIN	LOSS	DRAW
2013	0	1	1
2014	0	1	1
<b>TOTAL</b>	<b>0</b>	<b>2</b>	<b>2</b>

## ALL-TIME VS CHICAGO

	WIN	LOSS	DRAW
2013	1	1	1
2014	1	1	1
<b>TOTAL</b>	<b>2</b>	<b>2</b>	<b>2</b>

ALL-TIME VS CHICAGO





## GAME-BY-GAME VS FC KANSAS CITY

	DATE	LOCATION	RESULT
2013	5/11/13	Home	W, 2-1
	7/7/13	Away	D, 0-0
2014	5/7/14	Home	W, 2-1
	6/4/14	Away	L, 1-0
	7/18/14	Home	D, 1-1

## HOME VS KANSAS CITY

	WIN	LOSS	DRAW
2013	1	0	0
2014	1	0	1
<b>TOTAL</b>	<b>2</b>	<b>0</b>	<b>1</b>

## AWAY VS KANSAS CITY

	WIN	LOSS	DRAW
2013	0	0	1
2014	0	1	0
<b>TOTAL</b>	<b>0</b>	<b>1</b>	<b>1</b>

## ALL-TIME VS KANSAS CITY

	WIN	LOSS	DRAW
2013	1	0	1
2014	1	1	1
<b>TOTAL</b>	<b>2</b>	<b>1</b>	<b>2</b>



## GAME-BY-GAME VS HOUSTON DASH

	DATE	LOCATION	RESULT
2014	5/31/14	Home	L, 2-1
	6/11/14	Away	L, 2-1
	7/5/14	Away	W, 4-1

## HOME VS HOUSTON

	WIN	LOSS	DRAW
2014	0	1	0
<b>TOTAL</b>	<b>0</b>	<b>1</b>	<b>0</b>

## AWAY VS HOUSTON

	WIN	LOSS	DRAW
2014	1	1	0
<b>TOTAL</b>	<b>1</b>	<b>1</b>	<b>0</b>

## ALL-TIME VS HOUSTON

	WIN	LOSS	DRAW
2014	1	2	0
<b>TOTAL</b>	<b>1</b>	<b>2</b>	<b>0</b>

*\*Houston was added as an expansion team for the 2014 season*

ALL-TIME VS HOUSTON



## GAME-BY-GAME VS PORTLAND THORNS FC

	DATE	LOCATION	RESULT
2013	7/14/13	Away	D, 1-1
	8/10/13	Home	D, 0-0
	8/31/13*	Home	L, 2-0
2014	5/3/14	Home	D, 1-1
	5/21/14	Away	L, 2-1
	6/7/14	Away	W, 5-0

## HOME VS PORTLAND

	WIN	LOSS	DRAW
2013	0	1	1
2014	0	0	1
<b>TOTAL</b>	<b>0</b>	<b>1</b>	<b>2</b>

## AWAY VS PORTLAND

	WIN	LOSS	DRAW
2013	0	0	1
2014	1	1	0
<b>TOTAL</b>	<b>1</b>	<b>1</b>	<b>1</b>

## ALL-TIME VS PORTLAND

	WIN	LOSS	DRAW
2013	0	1	2
2014	1	1	1
<b>TOTAL</b>	<b>1</b>	<b>2</b>	<b>3</b>

\*Denotes NWSL Championship game

## GAME-BY-GAME VS SEATTLE REIGN FC

	DATE	LOCATION	RESULT
2013	6/23/13	Home	D, 1-1
	7/11/13	Away	L, 3-2
	8/7/13	Home	W, 1-0
2014	5/25/14	Away	D, 2-2
	6/22/14	Home	L, 2-1
	7/2/14	Home	L, 2-1

## HOME VS SEATTLE

	WIN	LOSS	DRAW
2013	1	0	1
2014	0	2	0
<b>TOTAL</b>	<b>1</b>	<b>2</b>	<b>1</b>

## AWAY VS SEATTLE

	WIN	LOSS	DRAW
2013	0	1	0
2014	0	0	1
<b>TOTAL</b>	<b>0</b>	<b>1</b>	<b>1</b>

## ALL-TIME VS SEATTLE

	WIN	LOSS	DRAW
2013	1	1	1
2014	0	2	1
<b>TOTAL</b>	<b>1</b>	<b>3</b>	<b>2</b>





## GAME-BY-GAME VS SKY BLUE FC

	DATE	LOCATION	RESULT
2013	4/14/13	Away	L, 1-0
	5/1/13	Home	W, 2-1
	6/8/13	Away	W, 2-0
	7/21/13	Home	W, 3-0
	8/24/13*	Home	W, 2-0
2014	5/11/14	Home	W, 2-0
	7/31/14	Away	L, 1-0
	8/13/14	Home	L, 3-2

## HOME VS SKY BLUE

	WIN	LOSS	DRAW
2013	3	0	0
2014	1	1	0
<b>TOTAL</b>	<b>4</b>	<b>1</b>	<b>0</b>

## AWAY VS SKY BLUE

	WIN	LOSS	DRAW
2013	1	1	0
2014	0	1	0
<b>TOTAL</b>	<b>1</b>	<b>2</b>	<b>0</b>

## ALL-TIME VS SKY BLUE

	WIN	LOSS	DRAW
2013	4	1	0
2014	1	2	0
<b>TOTAL</b>	<b>5</b>	<b>3</b>	<b>0</b>

\*Denotes NWSL Semifinal Game

## GAME-BY-GAME VS WASHINGTON SPIRIT

	DATE	LOCATION	RESULT
2013	4/20/13	Away	D, 1-1
	6/15/13	Away	W, 2-0
	6/28/13	Home	W, 4-0
	7/31/13	Home	W, 3-0
2014	4/13/24	Away	W, 3-1
	5/17/14	Away	L, 3-2
	7/12/14	Home	L, 1-0

## HOME VS WASHINGTON

	WIN	LOSS	DRAW
2013	2	0	0
2014	0	1	0
<b>TOTAL</b>	<b>2</b>	<b>1</b>	<b>0</b>

## AWAY VS WASHINGTON

	WIN	LOSS	DRAW
2013	1	0	1
2014	1	1	0
<b>TOTAL</b>	<b>2</b>	<b>1</b>	<b>1</b>

## ALL-TIME VS WASHINGTON

	WIN	LOSS	DRAW
2013	3	0	1
2014	1	2	0
<b>TOTAL</b>	<b>4</b>	<b>2</b>	<b>1</b>





<b>NAME</b>	<b>GP</b>	<b>GS</b>	<b>MIN.</b>	<b>G</b>	<b>A</b>	<b>GWG</b>	<b>SH</b>	<b>SOG</b>	<b>CK</b>	<b>OFF.</b>	<b>FC</b>	<b>FS</b>	<b>YC</b>	<b>RC</b>
Barczuk, Amy	9	4	395	0	0	0	0	0	0	0	7	0	0	0
DiMartino, Vicki	13	4	405	2	1	0	11	7	0	8	5	6	1	0
Grove, Ashley	2	0	19	0	0	0	0	0	0	0	0	0	0	0
Heyboer, Laura	6	3	216	0	1	0	0	0	0	1	6	3	0	0
Huffman, Sarah	16	13	1102	0	1	0	6	4	11	3	9	14	2	0
Johnson, Estelle	24	24	2160	0	0	0	0	0	0	0	19	8	1	0
Kerr, Samantha	21	19	1605	6	5	1	44	24	0	16	12	14	1	0
Lloyd, Carli	17	16	1466	10	0	4	67	29	10	3	41	23	5	0
Martin, Adriana	17	16	1361	3	1	1	31	14	46	7	9	10	3	0
McCarthy, Bryanna	1	0	15	0	0	0	0	0	0	0	0	0	0	0
Perez, Veronica	22	11	958	1	1	1	17	7	11	7	13	7	0	0
Reynolds, Katherine	24	24	2133	0	3	0	5	1	0	1	20	11	2	0
Robinson, Jodi-Ann	14	0	203	1	0	0	10	4	0	2	4	4	1	0
Sahlen, Alex	18	18	1555	0	3	0	7	5	0	1	9	9	0	0
Salem, Angela	23	22	1963	0	0	0	8	1	1	0	20	12	1	0
Taylor, Brittany	23	23	2070	3	4	0	18	13	0	0	15	7	2	0
Wambach, Abby	21	21	1873	11	8	3	71	41	0	15	36	38	2	0
Wells, Ingrid	11	0	167	0	0	0	3	1	0	2	2	1	0	0
Yokers, Kimberly	3	2	182	0	0	0	0	0	0	0	2	1	0	0
Zerboni, McCall	22	20	1752	1	0	1	26	11	36	2	29	28	1	0

### **GOALKEEPER**

<b>NAME</b>	<b>GP</b>	<b>GS</b>	<b>MIN.</b>	<b>W</b>	<b>L</b>	<b>T</b>	<b>SF</b>	<b>SOG</b>	<b>S</b>	<b>GA</b>	<b>GAA</b>	<b>PKM</b>	<b>PKF</b>	<b>SO</b>
Franch, Adrianna	24	24	2158	11	5	8	260	129	106	22	0.955	1	1	8
Tajonar, Pamela	1	0	2	0	0	0	3	0	0	0	0.000	0	0	0

**GOALS**

NAME	GP	GS	MIN	G
Wambach, Abby	21	21	1873	11
Lloyd, Carli	17	16	1466	10
Kerr, Samantha	21	19	1605	6
Martin, Adriana	17	16	1361	3
Taylor, Brittany	23	23	2070	3
DiMartino, Vicki	13	4	405	2
Perez, Veronica	22	11	958	1
Robinson, Jodi-Ann	14	0	203	1
Zerboni, McCall	22	20	1752	1

**ASSISTS**

NAME	GP	GS	MIN	A
Wambach, Abby	21	21	1873	8
Kerr, Samantha	21	19	1605	5
Taylor, Brittany	23	23	2070	4
Reynolds, Katherine	24	24	2133	3
Sahlen, Alex	18	18	1555	3
Martin, Adriana	17	16	1361	1
DiMartino, Vicki	13	4	405	1
Perez, Veronica	22	11	958	1
Heyboer, Laura	6	3	216	1
Huffman, Sarah	16	13	1102	1

**GAME-WINNING GOALS**

NAME	GP	GS	MIN	G
Lloyd, Carli	17	16	1466	4
Wambach, Abby	21	21	1873	3
Kerr, Samantha	21	19	1605	1
Martin, Adriana	17	16	1361	1
Perez, Veronica	22	11	958	1
Zerboni, McCall	22	20	1752	1

**SHOTS**

NAME	GP	GS	MIN	S
Wambach, Abby	21	21	1873	71
Lloyd, Carli	17	16	1466	67
Kerr, Samantha	21	19	1605	44
Martin, Adriana	17	16	1361	31
Zerboni, McCall	22	20	1752	26
Taylor, Brittany	23	23	2070	18
Perez, Veronica	22	11	958	17
DiMartino, Vicki	13	4	405	11
Robinson, Jodi-Ann	14	0	203	10
Salem, Angela	23	22	1963	8

**SHOTS ON GOAL**

NAME	GP	GS	MIN	SOG
Wambach, Abby	21	21	1873	41
Lloyd, Carli	17	16	1466	29
Kerr, Samantha	21	19	1605	24
Martin, Adriana	17	16	1361	14
Taylor, Brittany	23	23	2070	13
Zerboni, McCall	22	20	1752	11
DiMartino, Vicki	13	4	405	7
Perez, Veronica	22	11	958	7
Sahlen, Alex	18	18	1555	5
Huffman, Sarah	16	13	1102	4

**CORNER KICKS**

NAME	GP	GS	MIN	CK
Martin, Adriana	17	16	1361	46
Zerboni, McCall	22	20	1752	36
Perez, Veronica	22	11	958	11
Huffman, Sarah	16	13	1102	11
Lloyd, Carli	17	16	1466	10
Salem, Angela	23	22	1963	1

**OFFSIDE**

NAME	GP	GS	MIN	OFF
Kerr, Samantha	21	19	1605	16
Wambach, Abby	21	21	1873	15
DiMartino, Vicki	13	4	405	8
Martin, Adriana	17	16	1361	7
Perez, Veronica	22	11	958	7
Huffman, Sarah	16	13	1102	3
Lloyd, Carli	17	16	1466	3
Zerboni, McCall	22	20	1752	2
Robinson, Jodi-Ann	14	0	203	2
Wells, Ingrid	11	0	167	2

**GAMES PLAYED**

NAME	GP	GS
Johnson, Estelle	24	24
Reynolds, Katherine	24	24
Taylor, Brittany	23	23
Salem, Angela	23	22
Zerboni, McCall	22	20
Perez, Veronica	22	11
Wambach, Abby	21	21
Kerr, Samantha	21	19
Sahlen, Alex	18	18
Lloyd, Carli	17	16

**GAMES STARTED**

NAME	GP	GS
Johnson, Estelle	24	24
Reynolds, Katherine	24	24
Taylor, Brittany	23	23
Salem, Angela	23	22
Wambach, Abby	21	21
Zerboni, McCall	22	20
Kerr, Samantha	21	19
Sahlen, Alex	18	18
Lloyd, Carli	17	16
Martin, Adriana	17	16

**2013 CATEGORY LEADERS**

## MINUTES PLAYED

NAME	GP	GS	MIN
Johnson, Estelle	24	24	2160
Reynolds, Katherine	24	24	2133
Taylor, Brittany	23	23	2070
Salem, Angela	23	22	1963
Wambach, Abby	21	21	1873
Zerboni, McCall	22	20	1752
Kerr, Samantha	21	19	1605
Sahlen, Alex	18	18	1555
Lloyd, Carli	17	16	1466
Martin, Adriana	17	16	1361

## FOULS COMMITTED

NAME	GP	GS	MIN	FC
Lloyd, Carli	17	16	1466	41
Wambach, Abby	21	21	1873	36
Zerboni, McCall	22	20	1752	29
Reynolds, Katherine	24	24	2133	20
Salem, Angela	23	22	1963	20
Johnson, Estelle	24	24	2160	19
Taylor, Brittany	23	23	2070	15
Perez, Veronica	22	11	958	13
Kerr, Samantha	21	19	1605	12
Martin, Adriana	17	16	1361	9

## FOULS SUFFERED

NAME	GP	GS	MIN	FS
Wambach, Abby	21	21	1873	38
Zerboni, McCall	22	20	1752	28
Lloyd, Carli	17	16	1466	23
Kerr, Samantha	21	19	1605	14
Huffman, Sarah	16	13	1102	14
Salem, Angela	23	22	1963	12
Reynolds, Katherine	24	24	2133	11
Martin, Adriana	17	16	1361	10
Sahlen, Alex	18	18	1555	9
Johnson, Estelle	24	24	2160	8

## YELLOW CARDS

NAME	GP	GS	MIN	YC
Lloyd, Carli	17	16	1466	5
Martin, Adriana	17	16	1361	3
Wambach, Abby	21	21	1873	2
Huffman, Sarah	16	13	1102	2
Reynolds, Katherine	24	24	2133	2
Taylor, Brittany	23	23	2070	2
Zerboni, McCall	22	20	1752	1
Kerr, Samantha	21	19	1605	1
Salem, Angela	23	22	1963	1
Johnson, Estelle	24	24	2160	1



<b>NAME</b>	<b>GP</b>	<b>GS</b>	<b>MIN.</b>	<b>G</b>	<b>A</b>	<b>GWG</b>	<b>SH</b>	<b>SOG</b>	<b>CK</b>	<b>OFF.</b>	<b>FC</b>	<b>FS</b>	<b>YC</b>	<b>RC</b>
Allen, Teigen	4	2	258	0	0	0	1	1	0	0	3	2	2	0
Barczuk ,Amy	19	9	886	0	0	0	3	0	0	0	10	7	0	0
Bermudez, Sonia	21	9	837	4	1	1	23	8	15	9	9	12	2	0
Edmonds, Kristen	22	19	1739	0	1	0	1	0	0	0	12	15	1	0
Kerr, Samantha	20	20	1660	9	4	1	53	24	0	20	9	14	1	0
Kete, Emma	3	0	25	0	0	0	0	0	0	1	0	0	0	0
Lloyd, Carli	19	19	1710	8	5	1	61	33	3	13	51	24	5	0
Losada, Vicky	23	18	1624	3	6	0	22	7	35	4	17	14	2	0
Martin, Adriana	19	12	1195	3	4	0	26	16	29	7	5	9	0	0
Palmer, Haley	7	5	357	0	1	0	0	0	0	0	2	3	0	0
Reynolds, Katherine	19	19	1628	0	0	0	3	0	0	2	12	7	2	1
Salem, Angela	23	22	1858	0	0	0	10	6	0	0	16	10	4	1
Spencer, Jasmyne	22	9	933	3	1	1	25	14	0	10	8	16	1	0
Taylor, Brittany	24	24	2160	2	1	2	6	5	0	0	15	16	2	0
Verloo, Courtney	1	0	1	0	0	0	0	0	0	0	0	0	0	0
Wambach, Abby	10	10	835	6	4	1	28	17	0	10	11	11	1	0
Wetzel, Courtney	8	0	122	0	0	0	1	0	0	0	2	1	0	0
Williamson, Kathryn	21	20	1699	0	0	0	2	1	0	0	10	12	2	0
Zerboni, McCall	24	23	2036	3	2	1	12	5	0	2	45	24	2	0

### **GOALKEEPER**

<b>NAME</b>	<b>GP</b>	<b>GS</b>	<b>MIN.</b>	<b>W</b>	<b>L</b>	<b>T</b>	<b>SF</b>	<b>SOG</b>	<b>S</b>	<b>GA</b>	<b>GAA</b>	<b>PKM</b>	<b>PKF</b>	<b>SO</b>
Haracic, DiDi	1	1	90	0	0	1	21	10	7	3	3	2	3	0
Williams, Lydia	14	14	1183	6	6	1	125	65	49	15	1.071	1	1	2
Wys, Kelsey	10	9	887	2	6	2	143	66	47	20	2	2	2	1

# 2014 OVERALL STATISTICS



## GOALS

NAME	GP	GS	MIN	G
Kerr, Samantha	20	20	1660	9
Lloyd, Carli	19	19	1710	8
Wambach, Abby	10	10	835	6
Bermudez, Sonia	21	9	837	4
Losada, Vicky	23	18	1624	3
Martin, Adriana	19	12	1195	3
Spencer, Jasmyne	22	9	933	3
Zerboni, McCall	24	23	2036	3
Taylor, Brittany	24	24	2160	2

## ASSISTS

NAME	GP	GS	MIN	A
Losada, Vicky	23	18	1624	6
Lloyd, Carli	19	19	1710	5
Kerr, Samantha	20	20	1660	4
Wambach, Abby	10	10	835	4
Martin, Adriana	19	12	1195	4
Zerboni, McCall	24	23	2036	2
Bermudez, Sonia	21	9	837	1
Spencer, Jasmyne	22	9	933	1
Taylor, Brittany	24	24	2160	1
Edmonds, Kristen	22	19	1739	1

## GAME-WINNING GOALS

NAME	GP	GS	MIN	G
Taylor, Brittany	24	24	2160	2
Lloyd, Carli	19	19	1710	1
Kerr, Samantha	20	20	1660	1
Wambach, Abby	10	10	835	1
Zerboni, McCall	24	23	2036	1
Bermudez, Sonia	21	9	837	1
Spencer, Jasmyne	22	9	933	1

## SHOTS

NAME	GP	GS	MIN	S
Lloyd, Carli	19	19	1710	61
Kerr, Samantha	20	20	1660	53
Wambach, Abby	10	10	835	28
Martin, Adriana	19	12	1195	26
Spencer, Jasmyne	22	9	933	25
Bermudez, Sonia	21	9	837	23
Losada, Vicky	23	18	1624	22
Zerboni, McCall	24	23	2036	12
Salem, Angela	23	22	1858	10
Taylor, Brittany	24	24	2160	6

## SHOTS ON GOAL

NAME	GP	GS	MIN	SOG
Lloyd, Carli	19	19	1710	33
Kerr, Samantha	20	20	1660	24
Wambach, Abby	10	10	835	17
Martin, Adriana	19	12	1195	16
Spencer, Jasmyne	22	9	933	14
Bermudez, Sonia	21	9	837	8
Losada, Vicky	23	18	1624	7
Salem, Angela	23	22	1858	6
Zerboni, McCall	24	23	2036	5
Taylor, Brittany	24	24	2160	5

## CORNER KICKS

NAME	GP	GS	MIN	CK
Losada, Vicky	23	18	1624	35
Martin, Adriana	19	12	1195	29
Bermudez, Sonia	21	9	837	15
Lloyd, Carli	19	19	1710	3

## OFFSIDE

NAME	GP	GS	MIN	OFF
Kerr, Samantha	20	20	1660	20
Lloyd, Carli	19	19	1710	13
Wambach, Abby	10	10	835	10
Spencer, Jasmyne	22	9	933	10
Bermudez, Sonia	21	9	837	9
Martin, Adriana	19	12	1195	7
Losada, Vicky	23	18	1624	4
Zerboni, McCall	24	23	2036	2
Reynolds, Katherine	19	19	1628	2
Kete, Emma	3	0	25	1

## GAMES PLAYED

NAME	GP	GS
Zerboni, McCall	24	23
Taylor, Brittany	24	24
Losada, Vicky	23	18
Salem, Angela	23	22
Spencer, Jasmyne	22	9
Edmonds, Kristen	22	19
Bermudez, Sonia	21	9
Williamson, Kathryn	21	20
Kerr, Samantha	20	20
Lloyd, Carli	19	19

## GAMES STARTED

NAME	GP	GS
Taylor, Brittany	24	24
Zerboni, McCall	24	23
Salem, Angela	23	22
Williamson, Kathryn	21	20
Kerr, Samantha	20	20
Edmonds, Kristen	22	19
Lloyd, Carli	19	19
Reynolds, Katherine	19	19
Losada, Vicky	23	18
Martin, Adriana	19	12

**MINUTES PLAYED**

NAME	GP	GS	MIN
Taylor, Brittany	24	24	2160
Zerboni, McCall	24	23	2036
Salem, Angela	23	22	1858
Edmonds, Kristen	22	19	1739
Lloyd, Carli	19	19	1710
Williamson, Kathryn	21	20	1699
Kerr, Samantha	20	20	1660
Reynolds, Katherine	19	19	1628
Losada, Vicky	23	18	1624
Martin, Adriana	19	12	1195

**FOULS COMMITTED**

NAME	GP	GS	MIN	FC
Lloyd, Carli	19	19	1710	51
Zerboni, McCall	24	23	2036	45
Losada, Vicky	23	18	1624	17
Salem, Angela	23	22	1858	16
Taylor, Brittany	24	24	2160	15
Edmonds, Kristen	22	19	1739	12
Reynolds, Katherine	19	19	1628	12
Wambach, Abby	10	10	835	11
Williamson, Kathryn	21	20	1699	10
Barczuk ,Amy	19	9	886	10

**FOULS SUFFERED**

NAME	GP	GS	MIN	FS
Lloyd, Carli	19	19	1710	24
Zerboni, McCall	24	23	2036	24
Taylor, Brittany	24	24	2160	16
Spencer, Jasmyne	22	9	933	16
Edmonds, Kristen	22	19	1739	15
Losada, Vicky	23	18	1624	14
Kerr, Samantha	20	20	1660	14
Williamson, Kathryn	21	20	1699	12
Bermudez, Sonia	21	9	837	12
Wambach, Abby	10	10	835	11

**YELLOW CARDS**

NAME	GP	GS	MIN	YC
Lloyd, Carli	19	19	1710	5
Salem, Angela	23	22	1858	4
Zerboni, McCall	24	23	2036	2
Taylor, Brittany	24	24	2160	2
Losada, Vicky	23	18	1624	2
Williamson, Kathryn	21	20	1699	2
Bermudez, Sonia	21	9	837	2
Reynolds, Katherine	19	19	1628	2
Allen, Teigen	4	2	258	2
Spencer, Jasmyne	22	9	933	1

**RED CARDS**

NAME	GP	GS	MIN	RC
Salem, Angela	23	22	1858	1
Reynolds, Katherine	19	19	1628	1

# 2014 CATEGORY LEADERS



## SINGLE SEASON

### Goals

Most: 42 2014  
Least: 38 2013\*

### Goals Against

Most: 38 2014  
Least: 22 2013\*

### Assists

Most: 30 2014  
Least: 28 2013\*

### Assists Against

Most: 23 2014  
Least: 14 2013\*

### Shots

Most: 324 2013\*  
Least: 277 2014

### Shots Allowed

Most: 298 2014  
Least: 271 2013\*

### Shots on Goal

Most: 162 2013\*  
Least: 137 2014

### Shots on Goal Allowed

Most: 150 2014  
Least: 137 2013\*

### Corner Kicks

Most: 115 2013\*  
Least: 82 2014

### Corner Kicks Allowed

Most: 119 2013\*  
Least: 106 2014

### Fouls Committed

Most: 259 2013\*  
Least: 237 2014

### Fouls Suffered

Most: 227 2014  
Least: 213 2013\*

### Offsides

Most: 78 2014  
Least: 68 2013\*

### Offsides Against

Most: 82 2014  
Least: 53 2013\*

### Yellow Cards

Most: 27 2014  
Least: 22 2013\*

### Yellow Cards Against

Most: 26 2014  
Least: 21 2013\*

### Red Cards:

Most: 2 2014  
Least: 0 2013\*

### Red Cards Against

Most: 2 2013\*  
Least: 1 2014

### Penalty Kicks Taken

Most: 4 2013\*  
Least: 2 2014

### Penalty Kicks Made

Most: 2 2013\*  
Least: 1 2014

### Penalty Kicks Faced

Most: 6 2014  
Least: 1 2013\*

### Penalty Kicks Surrendered

Most: 5 2014  
Least: 1 2013\*

### Saves

Most: 111 2013\*  
Least: 103 2014

### Saves Against

Most: 129 2013\*  
Least: 95 2014

### Shutouts

Most: 9 2013\*  
Least: 3 2014

### Shutouts Against

Most: 5 2013\*  
Least: 4 2014

## GAME

**Goals:** 5 (6/7/2014, 5-0 win @ PTFC)

**Goals Against:** 4 (7/25/2014, 4-2 loss vs. BOS)

**Assists:** 3 (Three times, 2014/2013 season)

**Assists Against:** 3 (7/25/2014, 4-2 loss vs. BOS, 8/3/2014 4-3 win @ BOS)

**Shots:** 23 (7/31/13, 3-0 win vs. WAS)

**Shots Allowed:** 21 (7/31/2014, 1-0 loss @ SBFC)

**Shots on Goal:** 12 (7/5/2014, 4-1 win @ HOU)

**Shots on Goal Allowed:** 13 (7/7/13, 0-0 draw @ FCKC)

**Corner Kicks:** 13 (7/31/13, 3-0 win vs. WAS)

**Corner Kicks Allowed:** 13 (5/21/2014, 2-1 loss @ PTFC)

**Fouls Committed:** 16 (Three times)

**Fouls Suffered:** 15 (7/4/13, 1-0 loss @ CRS)

**Offsides:** 10 (7/5/2014, 4-1 win @ HOU)

**Offsides Against:** 8 (5/17/2014, 3-2 loss @ WAS)

**Yellow Cards:** 4 (Twice, 5/21/14, 2-1 loss @ PTFC, 6/22/14, 2-1 loss vs. SRFC)

**Yellow Cards Against:** 4 (6/18/2014, 2-0 win vs. CRS)

**Red Cards:** 1 (Twice, 5/17/2014, 3-2 loss @ WAS, 7/12/2014, 1-0 loss vs. WAS)

**Red Cards Against:** 1 (Three times)

**Penalty Kicks Taken:** 1 (Six times)

**Penalty Kicks Made:** 1 (Four times)

**Penalty Kicks Faced:** 3 (8/16/2014, 3-3 draw @ CRS)

**Penalty Kicks Surrendered:** 2 (8/16/2014, 3-3 draw @ CRS)

**Saves:** 13 (7/31/13, 3-0 win vs. WAS)

**Saves Against:** 8 (Six times)

*\*Totals include two playoff games*

## SEASON

**Goals:** 11 (*Abby Wambach - 2013*)\*  
**Assists:** 8 (*Abby Wambach - 2013*)\*  
**Game-Winning Goals:** 4 (*Carli Lloyd - 2013*)\*  
**Games Played:** 24 (*Four Players*)  
**Games Started:** 24 (*Three Players*)  
**Minutes Played:** 2,160 (*E. Johnson - 2013\*, B. Taylor - 2014*)  
**Shots:** 71 (*Abby Wambach - 2013*)\*  
**Shots on Goal:** 41 (*Abby Wambach - 2013*)\*  
**Corner Kicks:** 46 (*Adriana Martin - 2013*)\*  
**Offsides:** 20 (*Samantha Kerr - 2014*)  
**Fouls Caused:** 51 (*Carli Lloyd - 2014*)  
**Fouls Suffered:** 38 (*Abby Wambach - 2013*)\*  
**Yellow Cards:** 5 (*Carli Lloyd - 2013\* & 2014*)  
**Red Cards:** 1 (*Katherine Reynolds/Angela Salem 2014*)  
**Games Played:** 24 (*Adrianna Franch - 2013*)\*  
**Games Started:** 24 (*Adrianna Franch - 2013*)\*  
**Minutes Played:** 2,158 (*Adrianna Franch - 2013*)\*  
**Wins:** 11 (*Adrianna Franch - 2013*)\*  
**Losses:** 6 (*Lydia Williams/Kelsey Wys 2014*)  
**Draws:** 8 (*Adrianna Franch - 2013*)\*  
**Shots Faced:** 260 (*Adrianna Franch - 2013*)\*  
**Shots on Goal Faced:** 129 (*Adrianna Franch - 2013*)\*  
**Saves:** 106 (*Adrianna Franch - 2013*)\*  
**Goals Against:** 15 (*Lydia Williams 2014*)  
**Penalty Kicks Faced:** 3 (*DiDi Haracic 2014*)  
**Penalty Kicks Surrendered:** 2 (*DiDi Haracic/Kelsey Wys 2014*)  
**Shutouts:** 9 (*Adrianna Franch - 2013*)\*

*\*Totals include two playoff games*

## GAME

**Goals:** 3 (*Carli Lloyd - 6/28/13 vs. WAS*)  
**Assists:** 3 (*Abby Wambach - 6/28/13 vs. WAS*)  
**Shots:** 9 (*Carli Lloyd - 7/31/13 vs. WAS*)  
**Shots on Goal:** 6 (*Samantha Kerr - 7/5/14 @ HOU*)  
**Corner Kicks:** 9 (*Vicky Losada - 6/27/14 vs. BOS*)  
**Offsides:** 3 (*Seven Players, 2013/2014 season*)  
**Fouls Caused:** 6 (*Abby Wambach - 7/14/13 @ PTFC*)  
**Fouls Suffered:** 4 (*Three players*)  
**Yellow Cards:** 2 (*Angela Salem - 5/17/2014 @ WAS*)  
**Red Cards:** 1 (*Twice, Angela Salem - 5/17/2014 @ WAS, Katherine Reynolds - 7/12/14 vs. WAS*)  
**Shots Faced:** 21 (*DiDi Haracic - 8/16/14 @ CRS*)  
**Shots on Goal Faced:** 11 (*Kelsey Wys - 7/18/14 vs. FCKC*)  
**Saves:** 10 (*Adrianna Franch - 7/7/13 @ FCKC*)  
**Goals Against:** 4 (*Kelsey Wys - 7/25/14 vs. BOS*)  
**Penalty Kicks Faced:** 3 (*DiDi Haracic - 8/16/14 @ CRS*)  
**Penalty Kicks Surrendered:** 2 (*DiDi Haracic - 8/16/14 @ CRS*)





All 2015 Western New York Flash home games and additional National Women's Soccer League games not aired on National television will be live-streamed on the Internet using YouTube.com. All games will be free-of-charge.

Links to WNY Flash home game livestreams can be found at:  
[www.youtube.com/NWSLSoccer](http://www.youtube.com/NWSLSoccer)

In addition, links to each game will be posted on the Flash's Official website ([wnyflash.com](http://wnyflash.com)) approximately 24 hours prior to the start of any home game.

All away games, unless aired on national television, will also be live-streamed on YouTube at:  
[www.youtube.com/NWSLSoccer](http://www.youtube.com/NWSLSoccer).

## FLASH MEDIA RELATIONS CONTACT

**Jackie Maynard** Communications & Marketing Manager

jackie.maynard@wnyflash.com

o: 716.655.7529

c: 585.944.6994

## FLASH MEDIA CREDENTIAL POLICY

Media members can send credential requests to Communications Manager Jackie Maynard at jackie.maynard@wnyflash.com. Please include full name, contact information and the name of your publication. Credentials are needed for all Flash home games for any print, radio or online media member as well as photographers and videographers.

Credentials are also needed for open practices at Sahlen's Stadium.

## WRITING MEDIA CONTACTS

**ROCHESTER DEMOCRAT AND CHRONICLE** ([www.democratandchronicle.com](http://www.democratandchronicle.com)) 55 Exchange St., Rochester, NY 14614; O: 585-258-2400/585-232-7100, F: 585-258-2776, [sports@democratandchronicle.com](mailto:sports@democratandchronicle.com); Sports Editor: Steve Bradley (O: 585-258-2569, [sbradley@democratandchronicle.com](mailto:sbradley@democratandchronicle.com)); Soccer Writer: Jeff DiVeronica (C: 585-746-0126, [devo869@gmail.com](mailto:devo869@gmail.com))

**BUFFALO NEWS** ([www.buffalonews.com](http://www.buffalonews.com)) One News Plaza, Buffalo, NY 14240; O: 716-849-4461, F: 716-849-4587, [sports@buffnews.com](mailto:sports@buffnews.com); Sports Editor: Lisa Wilson ([lwilson@buffnews.com](mailto:lwilson@buffnews.com)); Columnists: Amy Moritz ([amytriathlete@gmail.com](mailto:amytriathlete@gmail.com))

**EQUALIZER SOCCER** ([www.equalizersoccer.com](http://www.equalizersoccer.com)) Managing Editor: Jeff Kassouf ([jeff@equalizersoccer.com](mailto:jeff@equalizersoccer.com)); Flash Writer: Megan Manzari (C: 315-730-2379, [mmanzari2@gmail.com](mailto:mmanzari2@gmail.com))

**FINAL THIRD SOCCER** ([www.finalthirdsoccer.com](http://www.finalthirdsoccer.com)) Editor: Courtney Andros (C: 508-954-6198, [courtney@finalthirdsoccer.com](mailto:courtney@finalthirdsoccer.com))

**SPORTS AND LEISURE MAGAZINE** ([www.sportsandleisuremag.com](http://www.sportsandleisuremag.com)) 469 Virginia St., Buffalo, NY 14202; O: 716-876-2738, F: 716-874-8289; Publisher: Marian Giallombardo (C: 716-445-5603, [publisher@sportsandleisuremag.com](mailto:publisher@sportsandleisuremag.com)); Flash Writer: Jeff Levine (716-982-8415, [sportsandleisurejeff@gmail.com](mailto:sportsandleisurejeff@gmail.com))

**BUFFALO.COM** ([www.buffalo.com](http://www.buffalo.com)) Ben Tsujimoto ([btsujimoto@buffnews.com](mailto:btsujimoto@buffnews.com))

**BUSINESS FIRST** ([www.bizjournals.com/buffalo](http://www.bizjournals.com/buffalo)) 465 Main St., Buffalo, NY 14203; O: 716-541-1600, F: 716-854-3394; Sports Business Reporters: Dave Bertola (716-541-1621, [dbertola@bizjournals.com](mailto:dbertola@bizjournals.com))

**MESSENGER POST** ([www.mpnnow.com](http://www.mpnnow.com)) Sports Editor: Bob Chavez (O: 585-394-0770 ext. 270, [rchavez@messengerpostmedia.com](mailto:rchavez@messengerpostmedia.com))

2015 MEDIA CONTACTS

**TELEVISION MEDIA CONTACTS**

**WHAM (ABC Rochester, Channel 13)** P.O. Box 20555, Rochester, NY 14602; O: 585-334-4250, F: 585-321-2291; Mike Catalana (mcatalana@sbgvtv.com), Toby Motyka (C: 607-760-6054, tmotyka@sbgvtv.com), Jon Doss (C: 209-531-5125, jdoss@sbgvtv.com)

**WROC (CBS Rochester, Channel 8)** 201 Humboldt St., Rochester, NY 14610; O: 585-288-2186, F: 585-288-1505; John Kucko (jkucko@wroctv.com), Thad Brown (C: 585-943-6726, tbrown@wroctv.com), Prescott Rossi (prossi@wroctv.com)

**WHEC (NBC Rochester, Channel 10)** 91 East Ave., Rochester, NY 14610; O: 585-262-6236, F: 585-546-6842, sports@whec.com; Justin Granit (585-329-9867, jgranit@whec.com), Stephen Bond (sbond@whec.com)

**TIME WARNER CABLE NEWS (Rochester, Channel 9)** 71 Mount Hope Ave., Rochester, NY 14620; O: 585-756-1561, F: 585-756-1673, sports@ynn.com; Sports Director: Tom Carroll (C: 585-362-3357, tom.carroll@twcable.com)

**WGRZ (NBC Buffalo, Channel 2)** 259 Delaware Ave., Buffalo, NY 14202; O: 716-849-2219, F: 716-849-7602, Adam Benigni (C: 716-510-3880, adam.benigni@yahoo.com), Stu Boyar (sboyar@wgrz.com), Jonah Javad (jjavad@wgrz.com), Heather Prusak (heather.prusak@wgrz.com)

**WIVB (CBS Buffalo, Channel 4)** 2077 Elmwood Ave., Buffalo, NY 14207; O: 716-879-4994, F: 716-874-8173; Steve Vesey (O: 716-879-4995, steve.vesey@wivb.com), Lauren Brill (O: 716-879-4993, lauren.brill@wivb.com)

**WKBW (ABC Buffalo, Channel 7)** Seven Broadcast Plaza, Buffalo, NY 14202; O: 716-840-7796, F: 716-840-7793; Jeff Russo (O: 716-840-7797, jrusso@wkbw.com), Shawn Stepner (O: 716-840-7796, stepner@wkbw.com), Nick Filipowski (nick.filipowski@wkbw.com), Joe Buscaglia (joseph.buscaglia@wkbw.com)

**TIME WARNER CABLE NEWS (Buffalo, Channel 8)** 355 Chicago St., Buffalo, NY 14203; O: 716-558-8529; Sports Director: Tom Carroll (C: 585-362-3357, tom.carroll@twcable.com), Reporter: Andy Young (andrew.young@twcable.com)

**RADIO MEDIA CONTACTS**

**SOCCER IS A KICK IN THE GRASS (WYSL 1040 AM/92.1 FM)** P: 585-346-3000; Host, Joe Sirianni (joe@soccerisakickinthegrass.com); Host, Andrew Battisti (C: 585-451-6701, andrew@soccerisakickinthegrass.com); Producer, Bob D'Angelo (dangelo@wysl1040.com). Airs Monday at 6:30 p.m. ET. www.soccerisakickinthegrass.com

**ENTERCOM ROCHESTER (WPXY 98.9/WCMF 96.5/WBEE 92.5/WBZA 98.9)** 70 Commercial St., Rochester, NY 14614; P: 585-423-2900; Gene Battaglia (p: 585-764-1249, gbattaglia@entercom.com)



Media credentials and access will be granted only to individuals with a legitimate working function at a game, training session or event. The bearer must be on a specific assignment. Credentials are non-transferable. Any unauthorized use of a credential subjects the bearer to ejection from the stadium. Resale or attempted resale is grounds for seizure and cancellation.

The following actions may result in seizure of credential and/or ejection of its wearer from the stadium or training facility:

- Requesting autographs at any time.
- Taking photographs with players/coaches
- Using credential for family or friends of a working media members
- Conduction unauthorized interviews
- Unprofessional behavior (Cheering in the press box, consumption of alcoholic beverages, failure to abide by posted rules, etc.)

### **Treatment of Credentialed Media**

Postgame Media Access: Players from both teams will be available to media post-game in a mix-zone located outside the team locker rooms or in a location near the field of play. The mix-zone will begin 10 minutes after the conclusion of the match. Locker rooms will not be open to media at any point.

Team PR directors should be present to indicate the beginning and end of media access to players, and ensure media have access to the head coach and all players after the match. All players are required to be available to media post-game.

All regulations about post-game media access should be clearly communicated to team staff and security to ensure a secure environment.

No individuals other than League or Club representatives shall be allowed in Club locker rooms following a game.

Under no circumstances shall any club and/or its players discriminate in any fashion against an accredited member of the media based upon race, creed, sex or national origin.

### **Seating Access**

Accredited media members will have access to the stadium, professional workrooms and stadium seating, if available. During the match, accredited media will have access to the press box which will be restricted to only those accredited media members.


In addition, each stadium should have a Press Box capable of seating no less than TEN (10) people, with separate areas for working press and electronic broadcasters, and sufficient power outlets for all needs. If possible, all accredited media members should be given a seat in the press box.

All credentialed media shall be seated in media seating areas, consistent with treatment afforded comparable media. In addition, all members of the media are to be afforded equal treatment and access to facilities and personnel, regardless of sex.

When the press box is fully occupied by working media, referee assessors or in-stadium observers shall be provided seating with a desk or table shielded from the weather and a vantage point to view replays (if available) from any telecast. The specific location may be determined by the Home Team but must provide these minimum accommodations.

In order to maintain the integrity of the working press box, seating is specifically reserved for media members. All other individuals (including player agents, VIP's and administrators) should be seated in overflow booths or assigned stadium seats.

### **Traveling Media**



Members of the working media who travel with a visiting team are not to be treated in a discriminatory manner with regard to seating or any other privilege or facility accorded to the home media. Comparable seating and equipment should apply to home and road media (print and electronic).

#### **Media Access to Training Sessions**

Teams are highly encouraged to make every training session open or at least partially open (i.e., if a session is declared “closed,” teams are required to have a 15 minute period for b-roll and photos at the start and time for media interviews following the session).

#### **Guidelines for Photographers and Camera Operators**

All photographers and television camera operators must stay behind the field boards at all times, unless released by the on-site photo marshal. The only exception to the field board rule will be when a staff photographer, a national rights-holder or NWSL has a crew at a game. These entities will be allowed to shoot from the area between the field boards and the touch lines in the area bounded by the top of the 18-yard box and the end line.

Each photographer will be permitted to use one monopod -- but no tripods. No seats other than “lawn-type” photographer seats will be permitted.

Stand-alone remote units will not be permitted at any time on or around the goal posts. Units mounted on the top of field boards behind the end line will be permitted at the stadium’s discretion, provided the equipment does not interfere with the clear display of the field board and does not impede the operation of broadcast equipment.

Live television crews located on the baseline or sideline will be limited to two (2) people -- a camera operator and a cable-puller -- and ENG crews will be limited to one (1) person. In either case, the crew must maintain actual possession of the camera and any other equipment during all game action. Cameramen and cable-pullers from all television crews must remain off the playing field at all times.

#### **Photographer Access to Field**

Photographers and camera operators shall be permitted in the area between the field boards and the touch lines in the area bounded by the top of the 18-yard box and the end line (a C-shape that extends from the top of the 18, back behind the goal, and to the top of the 18 on the opposite side of the field).

Once situated, no movement between the two halves of the field shall be permitted until halftime. Changes in this policy will be allowed in cases where stadium facilities dictate alterations. No photographers shall be allowed to move from end to end on the bench side of the field.

#### **Photographer Identification**

In addition to their regular credential, it is strongly recommended that photographers and camera crews be issued with colored bibs or armbands. This makes them easy to identify, and they would presumably enjoy quick and easy access to their designated areas. This will necessitate a special area in or near the stadium where they can pick up their bibs, on presentation of their accreditation, either the day before the match or on gameday, at the time media gates are opened. If they are not to be allowed to keep the bib, then it should be exchanged for a press card to be picked up following the game, or else signed out.

#### **Photography Work Area**

A work area should be provided for photographers, near the field where appropriate, with high-speed internet access, or special connections such as ISDN (on request). The size of the room may vary, but it should be sizeable enough for at least 5 - 10 people to work on desktops/tables. Like the press section of the stands, the photographers’ work room should have sufficient electrical sockets and telephone connections, compatible with the equipment being used for transmission.

#### **Accreditation**

Care should be taken when processing credential requests for photographers shooting for commercial agencies. NWSL does not permit the accreditation of photographers shooting specifically for commercial agencies. However, since many agencies offer editorial and commercial sales options (Getty Images, AP, Reuters, etc.) this must be handled on a case-by-case basis.

## ADDRESS

1801 S. Prairie Ave  
Chicago, IL 60614

Phone: (312) 808-1300

Fax: (312) 808-1301

## STAFF

Commissioner  
Director of Communications  
Communications Intern  
Operations Manager  
Operations Intern

Jeff Plush  
Patrick Donnelly  
Ramsena Younatham  
Jacquelyn Vanaman  
Devan Hribal

## ABOUT

The National Women's Soccer League (NWSL) is a nine-team Division-I women's professional soccer league featuring national team players from Canada, Mexico and the U.S. The nine clubs are the Boston Breakers, Chicago Red Stars, Houston Dash, FC Kansas City, Portland Thorns FC, Seattle Reign FC, Sky Blue FC, Washington Spirit and the Western New York Flash.

Based in Chicago, the NWSL is supported by the Canadian Soccer Association, Federation of Mexican Football and the United States Soccer Federation. For more information about the NWSL, log on to the league's official website at [www.NWSLsoccer.com](http://www.NWSLsoccer.com).



**NWSL**

Patrick Donnelly  
 Director of Communications  
 O: 312-528-1248  
 C: 312-330-7264  
 PDonnelly@NWSLsoccer.com

**Boston Breakers**

Ryan Wood  
 Communications Manager  
 C: 774-454-3089  
 rwood@bostonbreakers.com

**Chicago Red Stars**

Gunnar Berndt  
 Director of Communications  
 C: 310-702-1075  
 gberndt@chicagoredstars.com

**Houston Dash**

Lester Gretsch  
 Senior Director, Communications &  
 Broadcasting  
 O: 713-276-7522  
 C: 832-633-0632  
 LGretsch@houstondynamo.com

Matt Pedersen  
 Manager, Communications  
 O: 713-276-7520  
 C: 832-794-8673  
 MPedersen@houstondynamo.com

Ben Crook  
 Digital Communications Coordinator  
 O: 713-276-7588  
 C: 832-652-9936  
 bcrook@houstondynamo.com

**FC Kansas City**

Daniel Moreno  
 Media Operations  
 O: 855-452-4625, ext. 7208  
 C: 816-808-5550  
 dmoreno@kcprosoccer.com

**Portland Thorns FC**

Chris Metz  
 Vice President, Communications  
 O: 503-553-5433  
 C: 503-358-3608  
 CMetz@portlandtimbers.com

Mark Nelson  
 Manager, Media Relations  
 O: 503-553-5529  
 C: 602-478-0732  
 mnelson@portlandtimbers.com

Katie Simons  
 Media Relations Coordinator  
 O: 503-553-5539  
 C: 720-207-8167  
 ksimons@timbers.com

**Sky Blue FC**

John Archibald  
 Director of Communications  
 C: 423-544-9020  
 jarchibald@skybluesoccer.com

**Seattle Reign FC**

Brandon Kolp  
 Senior Director of Marketing  
 C: 206-228-1284  
 Brandon@ReignFC.com

Jenny Blakley  
 Content Manager  
 C: 253-232-4388  
 Jenny@ReignFC.com

**Washington Spirit**

Sarah Gehrke  
 Media Relations and Social Media  
 Manager  
 C: 572-429-2441  
 Media@WashingtonSpirit.com

**Western New York Flash**

Jackie Maynard  
 Communications Manager  
 C: 585-944-6995  
 jackie.maynard@wnyflash.com



**Teams will be aligned into a single table:**

Boston Breakers	Chicago Red Stars	Houston Dash
FC Kansas City	Portland Thorns FC	Seattle Reign FC
Sky Blue FC	Washington Spirit	Western New York Flash

**REGULAR SEASON**

Each of the nine (9) NWSL clubs will play 20 games, 10 at home and 10 away.

**POINT SYSTEM**

Teams will receive three points for a win, one point for a tie and zero points for a loss.

**REFEREES**

All referees in NWSL are either USSF (United States Soccer Federation) or CSA (Canadian Soccer Association) National Referees. Referees for all NWSL games will be trained, assigned and evaluated by PRO (Professional Referee Organization).

**GAME CLOCK**

The official game time for all National Women’s Soccer League games will be managed on the field by the referee. If necessary, the referee may also allot extra time (a.k.a. “stoppage time”) at the end of each period (first half, second half, and if applicable, first overtime period and second overtime period during playoff matches) to allow for injuries, time-wasting or other disturbances.

The stadium clock will display the time from 0:00 to 45:00 and from 45:00 to 90:00. For statistical purposes, the minutes for goals, substitutions, yellow cards, etc., will be listed from the first minute until the 90th minute. A goal scored at 15 minutes 10 seconds will be listed as having been scored in the 16th minute. Events occurring during stoppage time will follow the international norm by being demarcated with a “+” sign and the extra minutes. For example, a goal scored three minutes into first half stoppage time will be officially identified as happening at “48+”.

**GAME DAY ROSTERS**

Each team can nominate 18 players for a game day roster. Teams are allowed three substitutions per game.

**CAUTIONS AND SUSPENSIONS**

A Player will be suspended for one game upon receiving her fifth yellow card, regardless of the nature of the infraction which resulted in her being awarded the yellow card. A second suspension of one game would result after the awarding of an additional three cards as would a third suspension after the awarding of card number eleven.

**NWSL PLAYOFFS**

Single-Elimination Format

**WHO QUALIFIES**

The top four clubs in points from the League standings at the end of the regular season, qualify for the 2015

## **NWSL PLAYOFFS**

The two Semifinals will be decided by a single knockout game, the winner of which will advance to the **CHAMPIONSHIP GAME**

The NWSL Championship will be a single championship match hosted by the finalist with the most regular season points. If the two finalists have the same number of regular season points, the tiebreaker for playoff qualification will be applied to determine the host team.

If the score is tied after 90 minutes of play in any playoff game, two 15-minute extra time periods will be played in their entirety, followed by kicks from the penalty mark, if necessary.

### **TEAM-STANDINGS TIE-BREAKING PROCEDURES**

The team awarded the highest position in the NWSL standings will be the team with the greatest number of points (three points for a win, one point for a tie, zero points for a loss). In the event that two teams finish the regular season with an equal number of points, the following system will be used to break the tie:

When two or more teams are tied in the standings on points (3 points for a win, 1 point for a draw, 0 points for a loss), the following tiebreakers will be used in the sequence below, until one team ranks ahead of the other(s):

- 1) The highest position shall be awarded to the team with the better win/loss record in current Regular Season games against all other teams equal in points. (head-to-head competition)
  - 2) If the teams are still equal in the standings, the highest position shall be awarded to the team with the greater goal difference against all other teams during the Regular Season. (goal differential)
  - 3) If the teams are still equal in the standings, the highest position shall be awarded to the team scoring the greatest number of total goals against all other teams during the Regular Season. (total goals)
  - 4) If the teams are still equal in the standings, the procedures described in this section shall be applied only to games played on the road by each team against all other teams during the Regular Season. (road 1-3)
  - 5) If the teams are still equal in the standings, the procedures described in this section shall be applied only to games played at home by each team against all other teams during the regular season. (home 1-3)
- If the teams are still equal in the standings, the highest position in the standings shall be determined by the toss of a coin.

The first tiebreaker in a three-way tie is also head-to-head, but it is determined via points-per-game versus the other two teams. If two teams are tied in points-per-game head-to-head, the next tie breaker is goal difference.

NOTE: If two clubs remain tied after another club with the same number of points advances during any step, the tie breaker reverts to step 1 of the two-club format.

## **ROSTER LIMITS**

- 18-20 Player Roster
- Teams may have no more than 20 active (registered) Players under contract on their Roster at any one time, subject to Injury Replacement exceptions.
- For Players whose rights a Team holds from the previous Season, the decision must be made by March 9, 2015. Any Player not signed at that point will become available to be claimed as a Discovery Player. The Player would then be available to all Teams through the Discovery Process.
- Once preseason begins, Teams must make a decision on Non-Contracted Players, whose rights they hold, within 10 days once the Player reports (Example: college drafted Players)

## **PLAYER CLASSIFICATIONS**

### **Domestic Players**

A domestic Player is either a U.S. citizen, a permanent resident (Green Card holder) or the holder of certain other special status (e.g., has been granted refugee or asylum status). There is no limit as to the number of domestic Players on a Team's Roster within general Roster limits.

### **International Players**

Each Team has four (4) international Roster spots for the 2015 season, which will revert back to three (3) international Roster spots at the conclusion of the 2015 season. These international Roster spots may be traded with the only condition being time (spots can be traded for one year, two years or forever). With trades, there is no limit on the number of international Roster spots a Team may have. Any Player who does not qualify as a domestic Player in the U.S. shall be considered an international Player. Any international Player must occupy an international Roster spot on a Team's Roster (with the exception of Canadian or Mexican Allocated Players).

### **Allocated Players**

The term "Allocated Player" refers to a Player who is designated by her federation (FMF, CSA and U.S.) to play in the League.

### **Amateur Players**

An amateur Player is any person other than a professional Player. An amateur Player may not receive or retain any remuneration for playing except expenses directly related to a game or games which have actually been incurred by the Player.

### **Amateur List**

- Each Team's Amateur List will initially be allowed 10 amateur Players
- The Players listed on the Amateur List may remain there through the end of the 2015 Season.
- If another Team puts in a claim to sign a Player on another Team's amateur list to a SPA the club will have 48 hours to make a decision.

## **SOURCES OF PLAYERS**

Teams may add Players to their Roster through one of the following mechanisms:

- A. Allocations
- B. College Draft
- C. Trades
- D. Discovery
- E. Waivers
- F. Amateur Call-up
- G. Disabled List
- H. Season-ending Injury Replacement
- I. Goalkeeper Replacement

In order for a Team to add a Player to its Roster, it must use one of the above mechanisms. Once it has been determined that a Player may be added pursuant to one of the above mechanisms, it must then be determined if the Player's addition would be within the relevant Roster limits and guidelines.

## **ALLOCATIONS**

Each NWSL Team shall be allotted Allocated Players by the League. Allocated Players are determined by individual federations (Canada, Mexico and United States).

Allocated Players' salaries are generally paid to the League by the respective federations and do not count against the Salary Cap. Allocated Player housing will be provided by the Team for non-U.S. Allocated Players and counts against the Team Housing Cap.

For Teams that receive fewer than the full complement of Allocated Players, salary relief may be provided at the discretion of the League.

In the event a Team has more than the full complement of Allocated Players, that Team will provide back to the League a set salary amount to be distributed to the Teams that do not have their full complement of Allocated Players.


Any additional Salary Cap relief may be provided at the discretion of the League.

## **COLLEGE DRAFT**

These are Players drafted by Teams in the annual NWSL College Draft.

All Players who have exhausted their college eligibility or who will graduate in the 2014-15 year are eligible for the College Draft. Players must be registered by Jan. 16, 2015 to





be part of the College Draft. If a Player is eligible and does not register, that Player will not be able to be on the Roster of a NWSL Team until Oct. 1, 2015 – at which point that Player will become eligible as a Discovery Player.

The draft order is based upon the Teams' on-field performance during the previous year. If Teams are tied, the Tie Breaking Procedures set forth in Exhibit 6 shall be utilized.

#### **UNDRAFTED PLAYERS**

A Player who is on the College Draft List and is undrafted may be added to a Team's Roster via a Discovery claim on a first-come, first-serve basis. If more than one Team selects the same Player on the same day, priority will be determined in accordance with the League's Discovery Order.

#### **COLLEGE PROTECTED LIST**

If a college Player is drafted by a Team in the College Draft, the League will attempt to sign the College Player to a contract in a salary range predetermined by the League Office.

Any college Player who has refused to sign an NWSL contract or who has refused to report to the Team to be evaluated does not need to be placed on waivers and may remain college protected.

A Player on the College Protected List is not a Roster Player and may not play for the Team, since she has not signed a Player contract.

A college Player would come off a Team's College Protected list by the start of the preseason (March 9, 2015) if she is not contracted by that Team. Any Player not signed at that point will become available to be claimed as a Discovery Player. The Player would then be available to all Teams through the Discovery process.

#### **TRADES**

Players may be acquired in trades with League approval. See Standard Trade Agreement Form.

All Player trades are subject to League approval and to Salary Cap as well as Roster size and composition constraints. Player trades cannot be made for finite periods (i.e., Players may not be "loaned" by one Team to another or temporarily swapped by Teams).

Trades may not be conditioned upon a Player passing a physical examination or unwound because she failed to do so – it is a case of "buyer beware." Teams are advised to undertake any inquiries regarding a Player's medical condition before executing a Trade Agreement. It is also a case of "buyer beware" with regard to a Player failing to report to her new Team.

Bona fide consideration (either an exchange of Players, future draft choices) is required in each trade of a Player. No financial consideration is permitted. Teams are able to trade future draft picks and International spots as well as Players. Teams may not structure trades such that a Player may not play against her previous Team.

The League should be consulted early in any trade discussions so that Player salaries and other Player Agreement provisions can be confirmed, Team Salary Cap impacts can be determined, any draft positions to be traded can be confirmed, and any other matters, including the Players' physical condition, can be discussed.

Teams must respond fully to all inquiries in anticipation of a trade regarding Player injuries, illnesses, or other matters, and provide copies of medical records as requested. It is anticipated that Team trainers and physicians will communicate directly on these matters. A Team's failure to respond fully and accurately may result in sanctions imposed by the League as set forth under "Binding Agreement and Approval". There is, however, no prohibition against Teams trading an injured Player.

#### **Binding Agreement and Approval**

A trade is binding on the Teams from the time the Trade Agreement is executed by both Teams and submitted to the League office, but is not final until approval has been received in writing from the League office. Once the League has given approval, the trade is final except where, in the opinion of the League, egregious conduct has occurred on the part of a Team involved in a trade that was not known at the time the trade was approved.

The League shall disapprove any trade of a Player if the consideration is not clearly established and accurately disclosed on the Trade Agreement submitted to the League.

#### **Trades of Signed Discovery Players**

Teams may trade signed Discovery Players that were on their discovery lists, but may not trade Discovery Player "rights" or "spots." If a Team trades one of its signed Discovery Players, the Player will continue to count against the original Team's Discovery List for the remainder of the season.

#### **Trades of Allocated Players**



Trades involving Allocated Players may take place regardless of the nationality of the Allocated Players. Teams may trade an Allocated Player for any other Player or College Draft Pick or International Spot.

#### **Trades for International Spots**

Teams may trade International spots, provided that the only condition can be the length of time the spot is traded (e.g., a spot can be traded for 1 year, 2 years or forever).

#### **Trades for College Draft Picks**

Teams trading College Draft picks may not place conditions on those draft picks.

Teams are only permitted to trade selections for the next College Draft. The sole exception to this is that Teams will be permitted to trade selections from the next two College Drafts during the period of time from the conclusion of a Season through the end of the subsequent draft.

#### **Trade Deadline**

No trade may take place between the Roster Freeze and the NWSL Championship.

#### **Standard Trade Agreement Forms**

All trades should be submitted to the League office on an official Standard Trade Agreement Form (Exhibit 7).

#### **DISCOVERY**

A Discovery Player is a domestic or international Player who is currently not under contract with the League. A Team may claim her rights by adding her to their Discovery List.

The term "Discovery Player" may refer to both Players on the Discovery List and those Players under contract with the League who have been acquired through Discovery Process.

A Discovery Player request must be made to the League on an official Discovery Player Request Form (Exhibit 8) during the "Discovery Period." If approved by the League, the Player will be informed and will be added to the Team's Discovery List.

Teams may submit discovery forms and sign Players during the following Discovery Periods for the 2015 season:

- Seven (7) in the period of September 3-March 9
- An additional four (4) in the period of March 10-April 10
- No more than three (3) unsigned international Players may be on a Team's discovery list in the period September 3-April 10.
- An unlimited number of Players may be signed, but only two (2) unsigned discovery Players may be on a Team's discovery list from April 11-the Roster freeze date.
- No more than two (2) unsigned international Players may be on a Team's discovery list in the period of April 10-the Roster freeze date.

Once submitted the Discovery Player continues to occupy a discovery spot. An exception to this would be applied if another Team submits a discovery request for the same Player and after 14 days the Player is not signed with the original Team she will be removed from the first Team and placed on the second Team's list who submitted the request. The Player will then occupy a spot on the 2nd Team's discovery list.

#### **Discovery Process**

- A Player is put on a Team's discovery list once they are in talks/negotiations (on behalf of the League) to sign the Player.
- It is incumbent upon all Teams to notify their Discovery Players that they are on their Teams' Discovery List in order to assure that no tampering will take place.
- If another Team submits a discovery request for the same Player, the Team who holds the discovery rights will need to provide a Player Agreement within 14 days for the Player or release her rights.
- If the Player is released or the offer is deemed to not be bona fide, the discovery rights for the Player will then be awarded to the second requesting Team.
- If the Team makes a bona fide offer to the Player and she does not accept, the Player will not be eligible to be placed on another discovery list during that Season.
- Players will remain on a Team's discovery list until the end of the Season at which time she will be removed.

A list of Discovery Players will be available for Teams to review in order to facilitate the process. This list is for internal use only and not be publicized in any way.

#### **Non-Discoverable Players**

Teams may not discover Players in the pool for the full U.S. Women's National Team. The Player pool for the USWNT is as determined by U.S. Soccer (usually posted on



their website) at the time the Player is being signed by the League.

Teams may not discover a Player who played at a four-year collegiate institution during the college Season immediately prior to the date of discovery. If a Player has completed her college eligibility in the Season immediately prior to the date of her discovery and was not on the College Draft list, she shall not be permitted to play in the League for the current Season.

#### **Discovery Period**

The discovery period for Discovery Players is as set forth in the Competition Calendar. After the Roster Freeze Date the Discovery List is wiped clean as only goalkeeper replacement signings will be made for the remainder of that Season.

#### **Multiple Claims for the Same Player**

If a Team makes a valid Discovery Player request and no other Team makes a Discovery Player request for the same Player on the same day (whether or not it's a business day) during the Discovery Period, the Player shall be assigned to the requesting Team. In the event a Discovery Player is requested by more than one Team during the Discovery Period, the League shall award the Player to the Team per the Discovery Order.

The Discovery Order is determined via reverse order of the standings from the previous Season until Teams have played at least three (3) League games. If the discovery takes place prior to all Teams playing in at least three (3) League games priority shall be granted based upon the prior year's performance according to their point totals through the end of the Regular Season.

In the offseason, once a Team involved in a tie wins the tie breaker, it is moved to the bottom of the Discovery Order.

New expansion Teams shall be in the middle of the Discovery Order. If only one of the claiming Teams participated in the prior League Season, priority shall be granted to the Team that so participated. If neither Team played in the previous Season, priority will be granted to the Team that received the lowest 1st Round College Draft pick. If the Teams are equal in points, the League shall award the Player using the Tie Breaking Procedures for determining playoff participation and seeding (see Exhibit 6).

#### **SALARY CAP OF DISCOVERY PLAYERS**

A Discovery Player's Salary Cap number will include the Player's salary (and bonuses, camps, etc.). The resulting Salary Cap number for the Player must not exceed the maximum Salary Cap charge or cause the Team to exceed its Team Salary Cap (Exhibit 1).

#### **LOANS AND TRANSFERS OF PLAYERS BY NWSL**

##### **Transfer of Players by NWSL**

A Team may transfer or loan the services of any Player on a Team Roster to a Team outside of NWSL, subject to League approval for any such action that would remove a Player from her NWSL Team.

##### **Player Transfers or Loans**

All contract and transfer negotiations shall be approved by the League, consistent with the current rules.

##### **Loans of Players by NWSL**

Players may be loaned by NWSL to overseas clubs during the off-Season.

Loans of Players by NWSL must comply with the following:

- The Loan Agreement will be filled out by the Team and sent to the League Office for approval, along with contact information.
- NWSL will send a Loan Agreement to the Team to which the Player is being loaned. See Loan Agreement NWSL Form (Exhibit 14).
- Loans may not include any player out-of-contract during the NWSL season.
- An exit physical must be conducted prior to the loan being approved.
- NWSL Medical Health benefits will be available only while the Player is in the U.S.
- NWSL Workers Compensation does not apply while the Player is on loan with another League.
- NWSL will write into the loan agreement the Team that is taking the Player on loan will be responsible for injury and guaranteed their health.
- Per FIFA Regulations on the Status and Transfer of Players: Article 10, paragraph 3 "the club that has accepted a Player on a loan basis is not entitled to transfer her to a third club without the written authorization of the club (NWSL) that released the Player on loan and the Player concerned."

Loans for certain Players may occur after the conclusion of a Team's Season and before the NWSL Championship. In this case, there may be a reduction of such Players' salaries for salary budget purposes. Such loans are made in the sole discretion of the League.

#### **Players Loaned to NWSL**

All terms of any arrangements contemplated between an NWSL Team or any related party and a Player to be loaned to NWSL shall be fully disclosed to the NWSL League office. Any loan must be extendable to a second (2nd) year which will allow for the option year to be exercised. The loan agreement will include a proviso to this effect. The League office shall make a determination, in its sole discretion, as to the terms upon which it may accept such Player on loan.

Loans of Players to NWSL must comply with the following:

- The Loan Agreement will be filled out by the Team requesting the loan and sent to the League Office for approval, along with contact information. The League Office will send the Loan Agreement to the Team from which the Player is being loaned.
- NWSL will send a Loan Agreement to the Team the Player is coming from. See Loan Agreement Into NWSL (Exhibit 15).
- A Loan Fee will not be part of the Loan Agreement.
- The Loan Period for the Player shall be from the start date through the conclusion of the League Season.
- The Loan Period for the Player shall be over two (2) consecutive League seasons, as follows: for the 2015 League season from start date through September 30, 2015; and for the entirety of the 2016 League season.
- The NWSL Team will submit a Player Agreement form to the League.
- The loaned Player will sign the Standard Player Agreement.
- The loaned Player must have an entrance and exit physical with the NWSL Team.
- The loan must fall within the Registration Windows (See Exhibit: 2).
- Medical Health benefits will be provided for the term of the loan.
- Workers Compensation benefits will be provided for the term of the loan.
- International Players must provide a P-1 Visa.
- International Players must have a Social Security Number.

#### **LOANS TO WPSL**

Teams may loan contracted Players to a WPSL Team. The loan period shall be from the initial date of the agreement through the end of the NWSL season, when the Player is not providing services to her NWSL Team. Teams will need to submit a loan agreement for an amateur Team which will be signed off by the National Women's Soccer League prior to any participation by a Player. (Exhibit 19)

#### **WAIVERS**

Players may be added to a Team's Roster from the Waiver wire, through a Waiver Draft or "On-going Waivers." See Waiver Request Form (Exhibit 9).

#### **Current NWSL Players Waived**

Teams may waive Players based on performance at any time prior to the Roster Freeze date during the NWSL Season. Teams may not waive Players between the Roster Freeze and the NWSL Championship.

A Team wishing to waive a Player must first obtain a favorable medical examination of the Player – an "exit physical" (Exhibit 10), and then submit its waiver request to the League.

Once a Player on a P-1 visa has been waived and is not picked up by another Team in the League, the League is obligated to notify the United States Citizenship and Immigration Services (USCIS) of the termination of the employment relationship. After that date, if another Team intends to offer the player a contract, it would need to file a new petition.

#### **Claiming Period**

Provided the League approves the Player being placed on waivers pursuant to the above, it will distribute a waiver notice to all Teams. A Team claiming the Player must notify the League of the measures it will take to remain Roster compliant, if any such moves are necessary. Notice must be received by the League from a Team claiming a waived Player within the "Waiver Claiming Period."

The "Waiver Claiming Period" shall commence on the day (the "Waiver Period Commencement Date") the League gives notice to Teams and shall expire at 5:00 p.m. EST on the first day after the Waiver Period Commencement Date (the claiming period is 24 hours).





If a Team claims a Player and no other Team claims the same Player during the Waiver Claiming Period (having regard to the time of League deadlines, set forth in the Competition Calendar attached to this document), the Player shall be assigned to the claiming Team.

#### **Waiver Order**

The waiver order is determined via reverse order of the standings from the previous Season until Teams have played at least three (3) League games. If the waiver takes place prior to all Teams playing in at least three (3) League games priority shall be granted based upon the prior year's performance according to their point totals through the end of the Regular Season.

In the offseason, once a Team claims a Player from waivers, it is moved to the bottom of the Waiver Order claiming order.

New expansion Teams shall be in the middle of the waiver order. If there is more than one expansion Team in a given year, they shall be listed in reverse priority order of the College Draft order.

#### **Waiver Forms**

All waiver forms should be submitted to the League Office. See Exhibit 9.

#### **AMATEUR CALL-UP**

If a National Team Player is being called up for National Team duty, a Team may bring in a U.S. Amateur Player to count toward the 20-Player Roster. The Team is not to provide any compensation to the Amateur Player, but may cover necessary expenses as approved by the League.

An Amateur Call-up Form will be submitted and Amateur Players will sign an Amateur Player Agreement. They must be registered Amateur Players with U.S. Soccer.

For each National Team Call-up, each Team will need to submit its Amateur Call-Up Form no less than five (5) days prior to the Amateur Player's participation with the Team.

#### **Goalkeeper Exception**

In the case where a Team has less than two available goalkeepers, a Team will be able to add a goalkeeper to its Roster until its goalkeeper is back to full participation with the Team. This must be done within the Salary Cap.

#### **TRANSFER WINDOWS/REGISTRATION PERIOD**

U.S. Soccer will not register Player loans or transfers that take place outside of our two annual transfer windows. The Primary and Secondary Windows are set forth in the Competition Calendar.

#### **International Transfers and Loans**

With respect to international loans or transfers of Players, the Players must be registered with U.S. Soccer within the registration windows. A number of requirements must be fulfilled prior to registering a Player pursuant to a loan or transfer. These include:

1. Negotiation and agreement with the Player's club for her loan or transfer;
2. Negotiation and agreement with the Player as to her personal employment terms with NWSL;
3. Confirmation from the respective football associations that the Player can be transferred in accordance with FIFA guidelines;
4. Confirmation that the respective football association will release the international clearance (as it may take place outside their transfer window);
5. The Player receiving a work permit;
6. The Player passing a physical;
7. Receipt of the Player's International Transfer Certificate (ITC).

#### **Discovery Players**

With respect to Players not under contract to any club, they may be able to be registered outside the transfer windows, provided the Player was out of contract during NWSL's immediately previous registration window. This should be contrasted with Players that have secured a release from an existing contract or whose contracts have expired outside an NWSL registration window.

#### **College Drafted Players**

With respect to U.S. Players selected in the College Draft, they may be signed and registered outside the Transfer Window provided their clearance has not been transferred outside the U.S.

With respect to International Players selected in the College Draft, they may be subject to the Transfer Windows above and may have potential work permit issues.

#### **DISABLED LIST**

In the event a Player suffers an injury that will prohibit the Player from participating for at least 45 days, a Player may be added to a Team's Roster as a "Disabled List" replacement as set forth below. Any Player placed on the Disabled List will have to remain unavailable for a minimum of 45 days once documentation has been provided to the League.

Disabled List replacement Players must be signed prior to the Roster Freeze Date. Any Player coming off the Disabled List following the Roster Freeze Date may be added to the Roster, but Teams must comply with the relevant Roster limits.

Where the League determines that a Player has sustained an injury that will prohibit the Player from participating for at least 45 days during the League Season, it may provide the Team Roster relief, provided the full amount of the injured Player's salary is charged to the Team's Salary Cap in the relevant Season. Therefore, the Team is given Roster relief, but not Cap relief.

In the event where a Team has two (2) or more Players on its Disabled List, Salary Cap relief may be considered by the League.

Teams that carry or can create extra Salary Cap room will therefore be able to temporarily replace Players who are on the Disabled List. The budget number for the replacement Player will be calculated in the same manner as any other Roster Player.

Also, if the Player suffering the injury is an international Player, the Team may replace such Player with an international Player.

#### **SEASON-ENDING INJURY REPLACEMENT**

Where the League determines based on certification from a Team's medical staff that a Player has received an injury that is beyond reasonable doubt Season ending, it may provide the Team Roster relief, provided the full amount of the injured Player's salary (or any settlement amount paid to that Player) is still charged to the Team's Salary Cap in the relevant Season. In the event of such a determination, the injured Player shall not be eligible to play for the Team again during the Season in question. Therefore, the Team is given Roster relief, but not Salary Cap relief. Also, if the Player suffering the Season-ending injury is an international Player, the Team may replace such Player with an international Player.

#### **UNEXPECTED RECOVERY FROM SEASON-ENDING INJURIES**

In the event a Player, who had suffered a Season-ending injury and had been replaced on the Roster by another Player, unexpectedly rehabilitates and recovers prior to the end of the Season, she will nonetheless be barred from playing for the Team through the end of the Season.

#### **GOALKEEPER REPLACEMENT**

It is up to each Team to structure its Roster to ensure that it has the best make-up to field a Team throughout the year. Teams are required to carry two (2) goalkeepers.

In the case of an injured goalkeeper, or where a Team has less than two available goalkeepers, a Team will be able to add a goalkeeper to its Roster until its goalkeeper is back to full participation with the Team. Also, if the goalkeeper is an international Player, the Team may replace such goalkeeper with an international Player.

This must be done within the Salary Cap.

#### **ROSTER FREEZE**

No changes (including waiving Players) may be made to a Team's Roster from the "Roster Freeze Date" until after the NWSL Championship. Teams may add a short-term replacement after the Roster Freeze Date in cases of Goalkeeper Replacement (see above) and a Player coming off of the Disabled List. The Roster Freeze Date is set forth in the Competition Calendar.

#### **PLAYER TRYOUTS**

No tryouts may be conducted by a Team unless they are done pursuant to this Section. A Player tryout shall include any practice, participation, or training: (a) with any Players not under contract to NWSL; or (b) under the direct or indirect supervision of an NWSL Coach, Trainer, or other member of a Team's management. No Team may conduct a tryout with a Player unless she has executed a Waiver of Liability Agreement and received an entrance physical.

Names of all non-contracted Players that are practicing with Teams throughout the season should be submitted to the League in order to have a record should any workers comp or insurance issues arise.





Contracted NWSL Players are not allowed to participate in offseason tryouts as this would be considered a violation of the offseason training rule.

Teams may not try out a Player on the Roster of another Team or a College Player who has been drafted by another Team without League approval. No Team may try out a Player under contract to a Team outside NWSL without the written approval of the League Office.

#### **PRESEASON**

Teams may commence preseason training on March 9, 2015, but Players may report for off-field activities beginning March 6, 2015. A training session shall include any practice, participation, or training: (a) with any Players under contract to NWSL; or (b) under the direct or indirect supervision of an NWSL Coach, Trainer, or other member of a Team's management.

Any Player that is in preseason training camp with an NWSL Team cannot be discovered by another NWSL Team until she is released by that Team.

Beginning March 9, Teams must submit a preseason list of up to 32 Players. This list is to include only those Players who are currently participants in the camp. The list should be resubmitted any time there is a change in participants. By March 16, Teams may have a preseason list of no more than 25 Players, again to be resubmitted as changes occur. Forms will be provided to submit your list of Players to the League office. April 6 is the deadline for each Team's 18-20 Player Roster to be submitted to the League.

A Player must be on an official NWSL preseason Roster to participate in scrimmages or exhibition games. Therefore, Non-contracted Players may participate in any scrimmages or exhibition games. If such a Player participates in a scrimmage or exhibition game without being added to the official preseason Roster, the Team will be subject to sanctions, including but not limited to fines.

The League will approve an unlimited number of tryout Players for a calendar year provided that the Team has not incurred more than US \$5,000 in expenses in aggregate in such year in connection with such tryouts. Teams shall provide the League office with projected expenses in connection with the tryout and shall confirm actual expenses incurred after the tryout.

#### **SCRIMMAGES AND EXHIBITIONS**

Teams may hold scrimmages and exhibitions during the regular season (April 6- Sept. 27) with prior notice and approval from the League office (See section 2.8 of Operations Manual). A scrimmage/exhibition Roster must be submitted at least 48 hours in advance to the League for approval.

In addition to Amateur Player Call-ups, Teams will be allowed to use Non-contracted Players in scrimmages and exhibitions in order to replace any missing Women's National Team Players on their 18-20 Player Roster during WNT call-ups. It must be a one-for-one swap without exceeding the maximum of 20 Players on a Team Roster. Any Non-contracted Player must sign a Release and Liability Waiver in advance and be at least 18 years and older to be eligible.

A Player must be on the approved scrimmage and exhibition Roster in order to participate in scrimmages or exhibition games.

#### **OFF-SEASON TRAINING**

Teams may not commence training between September 1, 2014 and the Pre-Season Start Date (March 9, 2015). A training session shall include any practice, participation, or training: (a) with any Players under contract to NWSL; or (b) under the direct or indirect supervision of an NWSL Coach, Trainer, or other member of a Team's management.

(All Times ET)

**Friday, April 10**

Houston Dash vs. Washington Spirit  
8:30 PM

**Saturday, April 11**

Portland Thorns FC vs. Boston Breakers  
10:00 PM

**Sunday, April 12**

FC Kansas City vs. Sky Blue FC  
4:00 PM  
Seattle Reign FC vs. Western New York Flash  
7:00 PM

**Saturday, April 18**

Washington Spirit vs. FC Kansas City  
7:00 PM  
Sky Blue FC vs. Houston Dash  
7:00 PM  
Portland Thorns FC vs. Western New York Flash  
7:00 PM  
Chicago Red Stars vs. Seattle Reign FC  
8:00 PM

**Thursday, April 23**

FC Kansas City vs. Seattle Reign FC  
8:00 PM

**Saturday, April 25**

Chicago Red Stars vs. Portland Thorns FC  
8:30 PM

**Sunday, April 26**

Boston Breakers vs. Houston Dash  
5:00 PM  
Sky Blue FC vs. Washington Spirit  
6:00 PM

**Saturday, May 2**

Chicago Red Stars vs. Sky Blue FC  
6:00 PM  
Western New York Flash vs. FC Kansas City  
7:00 PM  
Houston Dash vs. FC Kansas City  
8:30 PM  
Seattle Reign FC vs. Washington Spirit  
10:00 PM

**Friday, May 8**

Western New York Flash vs. FC Kansas City  
7:00 PM

**Saturday, May 9**

Chicago Red Stars vs. Boston Breakers  
5:00 PM  
Sky Blue FC vs. Seattle Reign FC  
7:00 PM  
Portland Thorns FC vs. Washington Spirit  
10:00 PM

**Thursday, May 14**

FC Kansas City vs. Western New York Flash  
8:00 PM

**Friday, May 15**

Houston Dash vs. Chicago Red Stars  
8:30 PM

**Saturday, May 16**

Boston Breakers vs. Portland Thorns FC  
4:00 PM  
Washington Spirit vs. Sky Blue FC  
7:00 PM

**Friday, May 22**

Boston Breakers vs. Sky Blue FC  
7:00 PM

**Saturday, May 23**

Western New York Flash vs. Washington Spirit  
7:00 PM  
FC Kansas City vs. Chicago Red Stars  
8:00 PM  
Portland Thorns FC vs. Houston Dash  
10:00 PM

**Saturday, May 30**

Boston Breakers vs. FC Kansas City  
7:00 PM  
Washington Spirit vs. Portland Thorns FC  
7:00 PM  
Seattle Reign FC vs. Chicago Red Stars  
10:00 PM

**Sunday, May 31**

Sky Blue FC vs. Houston Dash

3:00 PM

**Saturday, June 6**

Washington Spirit vs. Boston Breakers  
7:00 PM  
Western New York Flash vs. Chicago Red Stars  
7:00 PM  
Houston Dash vs. Portland FC  
8:30 PM  
Seattle Reign FC vs. Sky Blue FC  
10:00 PM

**Friday, June 19**

Portland Thorns FC vs. FC Kansas City  
10:00 PM

**Saturday, June 20**

Chicago Red Stars vs. Washington Spirit  
8:00 PM  
Houston Dash vs. Western New York Flash  
8:30 PM

**Sunday, June 21**

Boston Breakers vs. Seattle Reign FC  
4:00 PM

**Saturday, June 27**

Washington Spirit vs. Houston Dash  
7:00 PM  
Seattle Reign FC vs. FC Kansas City  
10:30 PM

**Sunday, June 28**

Boston Breakers vs. Western New York Flash  
5:00 PM  
Sky Blue FC vs. Chicago Red Stars  
6:00 PM

**Friday, July 3**

Western New York Flash vs. Seattle Reign FC  
7:00 PM  
FC Kansas City vs. Washington Spirit  
8:00 PM  
Portland Thorns FC vs. Sky Blue FC  
10:00 PM

**Saturday, July 11**

Boston Breakers vs. FC Kansas City  
6:00 PM



Sky Blue FC vs. Portland Thorns  
7:00 PM  
Seattle Reign FC vs. Western New York Flash  
10:00 PM

**Sunday, July 12**

Houston Dash vs. Chicago Red Stars  
8:30 PM

**Wednesday, July 15**

Boston Breakers vs. Chicago Red Stars  
7:00 PM  
FC Kansas City vs. Houston Dash  
8:00 PM

**Saturday, July 18**

Washington Spirit vs. Seattle Reign FC  
7:00 PM  
Chicago Red Stars vs. Boston Breakers  
8:00 PM

**Sunday, July 19**

Western New York Flash vs. Sky Blue FC  
3:00 PM

**Wednesday, July 22**

Portland Thorns FC vs. Seattle Reign FC  
10:00 PM

**Saturday, July 25**

Washington Spirit vs. Chicago Red Stars  
7:00 PM  
Western New York Flash vs. Houston Dash  
7:00 PM  
Sky Blue FC vs. Boston Breakers  
7:00 PM

**Sunday, July 26**

Seattle Reign FC vs. Portland Thorns FC  
7:00 PM

**Wednesday, July 29**

Western New York Flash vs. Portland Thorns FC  
7:00 PM  
Houston Dash vs. FC Kansas City  
8:30 PM

**Saturday, August 1**

Boston Breakers vs. Seattle Reign FC  
4:00 PM

Washington Spirit vs. Houston Dash  
7:00 PM  
Sky Blue FC vs. Western New York Flash  
7:00 PM  
Chicago Red Stars vs. FC Kansas City  
8:00 PM

**Wednesday, August 5**

Portland Thorns FC vs. Boston Breakers  
10:00 PM

**Friday, August 7**

Houston Dash vs. Sky Blue FC  
8:30 PM

**Saturday, August 8**

Boston Breakers vs. Washington Spirit  
7:00 PM  
FC Kansas City vs. Western New York Flash  
8:00 PM

**Sunday, August 9**

Portland Thorns FC vs. Chicago Red Stars  
10:00 PM

**Wednesday, August 12**

Chicago Red Stars vs. Sky Blue FC  
2:00 PM  
Washington Spirit vs. Western New York Flash  
7:00 PM  
FC Kansas City vs. Portland Thorns FC  
8:00 PM  
Seattle Reign FC vs. Houston Dash  
10:00 PM

**Saturday, August 22**

Sky Blue FC vs. Portland Thorns FC  
7:00 PM  
FC Kansas City vs. Boston Breakers  
8:00 PM  
Houston Dash vs. Seattle Reign FC  
8:30 PM

**Sunday, August 23**

Chicago Red Stars vs. Western New York Flash  
5:00 PM

**Wednesday, August 26**

Seattle Reign FC vs. Boston Breakers  
10:00 PM

**Thursday, August 27**

FC Kansas City vs. Washington Spirit  
8:00 PM

**Saturday, August 29**

Western New York Flash vs. Chicago Red Stars  
7:00 PM  
Seattle Reign FC vs. Sky Blue FC  
10:00 PM

**Sunday, August 30**

Houston Dash vs. Boston Breakers  
8:30 PM  
Portland Thorns FC vs. Washington Spirit  
9:00 PM

**Friday, September 4**

Western New York Flash vs. Portland Thorns FC  
7:00 PM

**Saturday, September 5**

Washington Spirit vs. Seattle Reign FC  
7:00 PM

**Sunday, September 6**

Chicago Red Stars vs. Houston Dash  
5:00 PM  
Sky Blue FC vs. FC Kansas City  
6:00 PM