



2008 IDAHO STAMPEDE PRESEASON MEDIA GUIDE





IDAHO STAMPEDE 2008-09 SCHEDULE

Home games in **bold**. All Times MST.

NOVEMBER

Saturday 29	Anaheim	7:00
Sunday 30	Anaheim	6:00

DECEMBER

Friday 5	@ Austin	6:30
Sunday 7	@ Rio Grande	2:30
Wednesday 10	Dakota	7:00
Friday 12	@ Los Angeles	4:30
Saturday 13	Utah	7:00
Tuesday 16	@ Los Angeles	4:30
Thursday 18	@ Anaheim	8:00
Saturday 20	@ Anaheim	7:00
Sunday 21	@ Bakersfield	5:00
Friday 26	@ Albuquerque	7:00
Saturday 27	Sioux Falls	7:00

JANUARY

Friday 2	Bakersfield	7:00
Saturday 3	Austin	7:00
5-8	TBD Showcase Game	TBD*
5-8	TBD Showcase Game	TBD*
Friday 9	@ Anaheim	8:00
Sunday 11	@ Bakersfield	7:00
Thursday 15	Reno	7:00
Sunday 18	@ Bakersfield	5:00
Wednesday 21	Albuquerque	7:00
Friday 23	Colorado	7:00
Saturday 24	Fort Wayne	7:00
Tuesday 27	@ Los Angeles	4:30
Wednesday 28	Erie	7:00
Friday 30	Los Angeles	7:00
Saturday 31	Los Angeles	7:00

FEBRUARY

Wednesday 4	@ Erie	5:00
Saturday 7	@ Tulsa	6:00
Sunday 8	@ Iowa	6:00
Thursday 19	Iowa	7:00
Saturday 21	@ Reno	4:00
Sunday 22	@ Reno	4:00
Friday 27	Utah	7:00
Saturday 28	Utah	7:00

MARCH

Monday 9	@ Utah	7:00
Wednesday 11	Anaheim	7:00
Friday 13	Los Angeles	7:00
Saturday 14	Rio Grande	7:00
Monday 16	@ Utah	7:00
Tuesday 17	@ Colorado	7:00
Thursday 19	Reno	7:00
Saturday 21	Reno	7:00
Saturday 28	@ Reno	8:00

APRIL

Wednesday 1	@ Dakota	6:00
Saturday 4	@ Sioux Falls	6:00
Wednesday 8	Bakersfield	7:00
Friday 10	Bakersfield	7:00
Saturday 11	@ Utah	7:00

NOTE: *2008 NBA D-League Showcase played in Utah (January 5-8)



The 2008-2009 Idaho Stampede Media Guide was published, written and compiled under the direction of Jinny Giery, Director of Public Relations & Game Operations and Jeff Johnson, Public & Media Relations Coordinator. Special thanks to Steve Brandes, Simon Keeling, Joshua Thomas, Sean Hayes, Dan Aizpirtarte, and Ally Griswold for their contributions and valuable assistance. The information contained in the publication was compiled by the Idaho Stampede and is provided as a courtesy to our fans and the press and may be used only for personal or editorial purposes. Any commercial use of this information is prohibited without the prior written consent of the Idaho Stampede. All photos courtesy of NBAE/Getty Images. Copyright 2008 Idaho Stampede.

TABLE OF CONTENTS

2008-09 SEASON

Schedule	1
Table of Contents	2

MEDIA INFORMATION

Media & Season Information	3
----------------------------	---

STAFF

Staff Directory	4
Bill Ilett	5
Steve Brandes	5
Simon Keeling	5
Jinny Giery	6
Joshua Thomas	6
Sean Hayes	6
Dan Aizpitarte	6
Jeff Johnson	6
Jennifer Huter	7
Mark Snider	7
Bryan Gates	9
Randy Livingston	9
Joel Abelson	9
Ben Hemphill	9
Kevin Taylor	10

PLAYERS

2008-09 Roster	12
Mildon Ambres	13
Ryan Appleby	14
Tim Barnes	15
Anthony Coleman	16
Casey Cook	17
Jermareo Davidson	17
Jason Ellis	18
Coby Karl	19
Reggie Larry	20
L.P. Levros	21
Brent Petway	22
Ryan Schmidt	23
Ernest Scott	24
Lanny Smith	25
Jamaal Tatum	26
Rashad West	27

***Rosters subject
to change**

OTHER INFORMATION

2007-08 Season in Review	29
All-Time Records	33
History	35
In the Community	46
The Opponents & D-League	49
The Media	53
Schedule & National Halftime Acts	55

Welcome to the 2008-09 Idaho Stampede regular season, the third as a member of the NBA Development League. Following are a few guidelines that we hope will assist you in your coverage this season.

CREDENTIALS

Two credentials are honored for admission into Qwest Arena. Stampede and D-League season media passes and Stampede single-game media passes (good for date specified). Media members may apply for credentials by faxing request to the media relations department at (208) 388-3845, or by email at jinny@idahostampede.com. All credentials are issued on a priority basis to major local, national and international media. Requests for single-game credentials must be made no later than noon on game day. Media with Stampede and NBA D-League season passes or NBA passes are asked to contact the Stampede to ensure appropriate accommodations. Freelance reporters and photographers applying for credentials must provide the Stampede with story-assignment information prior to receiving credentials. Credentials are non-transferable and do not guarantee a seat. When in Qwest Arena, media members are required to wear their credentials at all times. Autographs are not allowed during media access times.

TELEPHONE LINES

Courtesy telephone lines are provided for media in designated areas of Qwest Arena.

LIVE SHOTS

Television stations producing live shots from Qwest Arena must inform Jinny Giery or Jeff Johnson in Stampede media relations. Live shots must be concluded no later than 30 minutes prior to game time.

PHOTO/VIDEO

Limited space is available on each baseline for still and television photographers. There are no photo positions along the sidelines. Flash photography is strictly prohibited. Rubber lens shades are required for all photographers and video and film crews who are authorized to shoot NBA D-League game action. Photographers must be seated on the floor and may not kneel when shooting from the baselines.

LOCKER ROOMS

As per NBA D-League regulations, the Stampede and visiting locker rooms are opened 10 minutes, or earlier, but no later than 15 minutes after the conclusion of the game. Still photographers are not permitted in the locker rooms. Cell phone use by the media is prohibited inside team locker rooms.

PRACTICE

All Stampede practices are open to the media for the first 15 minutes with players and coaches available for interviews prior to practice. All shoot-arounds are closed to the media unless otherwise permitted by Stampede media relations and/or head coach. Non-game day practices are held at the Garden City Boys & Girls Club (610 E. 42nd St., Garden City, ID 83714). Shoot-arounds are held at Qwest Arena. Please call the Stampede office at (208) 388-4667 to confirm practice locations and times.

PRACTICE SITE

Boys & Girls Club – Garden City
610 E. 42nd St., Garden City, ID 83714

MEDIA CONTACT

Jinny Giery
Director of Public Relations & Game Operations
Tel: (208) 388-4667
Cell: (208) 573-4431

Jeff Johnson
Media & Public Relations Coordinator
Tel: (208) 388-4667
Cell: (208) 695-3275

FRONT OFFICE

Managing Investor	Bill Ilett
Investors	Kipp Bedard,
	Alan Bermensolo,
	Skip Smyser, Kim Trout,
	Brian King, Gary Michael,
	Steven Stout, Scott Peyron,
	Jim Tomlinson, John Brunelle,
	Kenny Bolton, Mike Shanahan
President & General Manager	Steve Brandes
V.P. of Sales & Service	Simon Keeling
Director of Public Relations & Game Operations	Jinny Giery
Account Executive	Joshua Thomas
Account Executive	Sean Hayes
Account Executive	Dan Aizpitarte
Financial Controller	Frank Ilett
Media & Public Relations Coordinator	Jeff Johnson
Dance Team Director	Jennifer Huter
Radio Play-by-Play	Mark Snider

BASKETBALL OPERATIONS

Head Coach	Bryan Gates
Associate Head Coach	Randy Livingston
Assistant Coach	Joel Abelson
Ben Hemphill	Director of Basketball Operations
Athletic Trainer	Kevin Taylor
Videographer	Ron Weatherly

GAME DAY STAFF

Statistician	Jeff Gerhardt
Statistician	Geoff Moore
Statistician	Gene Hanzlik
Statistician	Chris Walton
Statistician	Jack Kelpin
Statistician	Ron Nuxoll
Statistician	Gary Harwood
Statistician	George Tucker
PA Announcer	Rex Stiehl
Ticket Sales & Operations Assistant	Nick Anderson
Public Relations Assistant	Ally Griswold
Game Operations Coordinator	Jennifer Burns

BILL ILETT
MANAGING INVESTOR

Bill Ilett serves as the Managing Investor for the Idaho Stampede's local ownership group. The other investors are Kipp Bedard, Alan Bermensolo, Brian King, Gary Michael, Skip Smyser, Steve Stout, Jim Tomlinson, John Brunelle, Kim Trout, Kenny Bolton, and Mike Shannahan.

Ilett is a Certified Public Accountant but spent the majority of his professional career in the commercial truck leasing business. His company, TransCorp, Inc. was the largest independent truck-leasing firm in the intermountain area before he sold the majority of the company to a public traded company in 1995. In addition to his involvement with the Idaho Stampede, he runs a finance leasing company, is involved with commercial real estate, and does consulting work in the transportation field.

He was very involved with the CBA, which the Idaho Stampede was formerly a member. He helped restart the CBA in 2001 and served on the Executive Committee and was Chairman of the Finance Committee from 2001 until 2006.

Ilett is a graduate of Boise State University and has remained very involved with the University. He has served as President of the Alumni Association, Board Member of the Bronco Athletic Association, Chairman of the College of Business and Economics Advisory Board and is presently Chairman of the BSU Foundation. He is a past President of the Boise Sunrise Rotary Club and was named Rotarian of the Year for 2005-06 for the Club. He serves on several boards of other for-profit and non-profit businesses and organizations.

Bill and his wife Christina live in Boise, Idaho and Palm Desert, California.

STEVE BRANDES
PRESIDENT & GENERAL MANAGER

Steve Brandes is the President & General Manager of the 2008 NBA Development League Champions, the Idaho Stampede and enters his seventh season with the Stampede Front Office.

A native of Amherst, Ohio, Brandes enjoys a diverse background ranging from traveling to Russia as a student ambassador to being a professional archaeologist for two years.

Steve obtained a liberal arts degree from the College of Wooster in Wooster, Ohio. He then attended Game Face, Inc.'s Executive Academy, a leading international sports sales training and placement company in Portland, Oregon. Brandes sold for a plethora of teams during his four months at Game Face including; the Portland Winterhawks, Hudson Valley Renegades, Los Angeles Avengers, Portland International Raceway, Everett Aquasox, and Portland State University Football. For more information about Game Face Inc.'s Executive Academy log on to gamefacesportsjobs.com.

Steve began with the Stampede as an Account Executive and has moved up the ranks through nearly every position available. He has served as the Stampede's Director of Ticket Sales and Game Operations as well as the Assistant General Manager. Through his time at the Stampede, Brandes has helped the team with transitions to a new arena and to a new league (CBA to NBA Development League). He also played an integral role in the success of the 2006 CBA All-Star Classic and the 2008 NBA Development League Showcase hosted in Boise. Steve takes great pride in continuing to build the Stampede's Community efforts with the addition of many new and successful programs through the Idaho Stampede Community Foundation.

SIMON KEELING
V.P. OF SALES & SERVICE

Simon enters his third season with the Idaho Stampede as our V.P. of Sales & Service. He started with the team as an Account Executive during the teams first season in the NBA Development League and has worked his way up through the ranks. His focus with the team is to lead the sales staff and drive season ticket sales, group nights and mini-plans. Simon also oversees all of the Teams ticket operations and is very passionate about maintaining a superior level of customer service for the Stampede clientel.

Originally from Doncaster, England, Simon completed his undergraduate degree in Sports Entertainment and Event Management at Johnson & Wales University in Providence, R.I.

Keeling resides in Boise.

JINNY GIERY
DIRECTOR OF PUBLIC RELATIONS & GAME OPERATIONS

Jinny Giery enters her third season with the Stampede and first season as the team's Director of Media and Public Relations. She handles all media, community, and public relations responsibilities for the NBA Development League franchise. Giery's responsibilities include the design and content of the team website and all team publications, including writing press releases, team media guide, team newsletter, and game notes. Giery will also focus on group ticket sales, game operations and entertainment.

Originally from Virginia, Giery grew up playing softball, basketball, and field hockey. Giery completed her undergraduate degree in 2005, majoring in Communications and English at Boise State University.

Giery resides in Boise.

JOSHUA THOMAS
ACCOUNT EXECUTIVE

Joshua Thomas joins the Stampede for his first season as an Account Executive. His responsibilities include focusing on season ticket sales, group nights, mini-plans, and various operations.

Originally from Riverside, California, Thomas grew up playing basketball and is an avid fan of the Los Angeles Lakers. Thomas graduated from Cal State Fullerton in 2007 with a degree in Broadcast Journalism. He was the Team Manager for the Men's Basketball Team at U.C. Riverside during the 2007-08 season.

Thomas also adds Stand up Comedian and Youth Pastor to his resume. He resides in Boise.

SEAN HAYES
ACCOUNT EXECUTIVE

Sean Hayes joins the Stampede for his first season as an Account Executive. He was hired after completing the Sales and Marketing Internship program this past summer. His responsibilities include focusing on season ticket sales, group nights, mini-plans, and various operations.

Originally from Vancouver, Washington, Hayes is a huge fan of Stampede parent club, the Portland Trail Blazers. He attended Washington State University in Pullman, Washington where he majored in Sports Management.

In his spare time, Hayes can be found spending time outdoors, boating and hiking with family and friends. Since moving to Idaho, he has begun mountain biking in the foothills of Boise.

Hayes resides in Boise.

DAN AIZPITARTE
ACCOUNT EXECUTIVE

Dan Aizpitarte joins the staff as an Account Executive. In his first season with the Stampede, Aizpitarte will serve as an Account Executive. His responsibilities include focusing on season ticket sales, group nights, mini-plans, and various operations.

Originally from Emmett, Idaho, Aizpitarte is fluent in Basque and you can find him participating in many local Basque events around town. He attended the University of Idaho where he was a proud member of the Vandal defensive line for four years. Aizpitarte graduated with a double major in marketing and human resources management.

In his spare time, Aizpitarte can be found shooting hoops with friends, visiting his family, and singing karaoke whenever someone will pass him the microphone.

Aizpitarte resides in Boise.

JEFF JOHNSON
MEDIA AND PUBLIC RELATIONS COORDINATOR

Jeff Johnson enters his second season with the Idaho Stampede of the NBA Development League as Media and Public Relations Coordinator. His focus is to assist the Director of Public Relations with all media requests and will play an important role in preparing game day published materials.

Johnson has lived in Boise all his life, graduating from Capital High School in 2003. In high school he lettered in both football and basketball.

After high school, Johnson served a two year LDS mission in New York City, NY. Upon returning, he enrolled at Boise State University, where he is currently majoring in Communication with an emphasis in Public Relations.

Johnson resides in Boise with his wife Laura and son Jack.

JENNIFER HORDEMANN
DANCE TEAM DIRECTOR

Jennifer Hordemann enters her seventh season as a member of the Idaho Stampede Spirit Dance Team. This will be her third year as Director.

Jennifer attended Utah State University from 2000-2002, where she was a member of the Aggiette Dance Team. After returning home to Boise, she began her career with the Spirit Dancers.

In her spare time, Jennifer enjoys running, skiing, wakeboarding, traveling, and spending time with family and friend. She resides in Eagle with her husband Vince.

MARK SNIDER
RADIO PLAY-BY-PLAY

Mark Snider is the radio voice of the Idaho Stampede. Snider, an Oregon State University graduate, was the play-by-play voice of the Stampede two last seasons on KFXD AM 630. He was also the host of the Idaho Stampede Radio Show in years past. Snider has previously done play-by-play for high school football as well as color commentary on Boise State University football and basketball broadcasts. In college, Snider did play-by-play for a number of Oregon State intercollegiate sports including basketball, baseball, and volleyball.

Snider was the news and sports director at KAST AM/FM in Astoria, Oregon. He was also a reporter and fill-in sports anchor at KTVB-TV, the NBC affiliate in Boise. Snider has reported for ESPN Radio, Associated Press Radio Sports, WFAN in New York, WMAQ Radio in Chicago, and Sports Radio 560 WQAM in Miami. He has worked as a producer for the San Francisco Giants Radio Network and KNBR Radio in San Francisco.

Snider resides in Boise with his wife and daughter.

HEAD COACH BRYAN GATES

NBA D-LEAGUE COACHING RECORD

YEAR	G	W	L	PCT.	FINISH
2006-07	50	33	17	.660	1ST Place, Western Division
2007-08	50	36	14	.720	2008 NBA D-League Champions

BRYAN GATES HEAD COACH

The back-to-back NBA D-League Dennis Johnson Coach of the Year award winner will be entering his ninth overall season with the Stampede, serving in various roles since the inception of the franchise and bolsters a resume that includes coaching in five professional basketball leagues. In his two year tenure as Stampede head coach, his record is 72-33, a (.685) winning percentage.

In his second season as head coach, Gates led the Stampede to the 2008 NBA Development League Championship where the Stampede came out victoriously, beating the Austin Toros in a three game series. The Stampede also earned the best record in league history with an 18-game winning streak and 21 home wins, another D-League record, and clinched the 2007-08 Western Division title for the second year in a row.

Gates finished his first season as head coach of the Stampede in 2006-07 with a 33-17 record, which tied the D-League record for most wins and highest winning percentage in a season, won the Western Division title and earned a bye into the Western Division Final during the 2007 NBA Development League playoffs.

Gates' overall head coaching record is 203-101, a (.669) winning percentage. He has coached with the IBA's Rapid City Thrillers, CBL's Hickory Nutz, USBL's Oklahoma Storm, and the Beirut Blue Stars in Lebanon. In his four year as head coach in Oklahoma, he along with the Iowa Energy head coach, Nick Nurse, won three consecutive Division titles. Gates was also named the 2006 USBL Coach of the Year.

Throughout his career, Gates has worked with former Stampede head coaches; Bobby Dye, Russ Bergman, Rory White and Larry Krystkowiak. During the 2005-06 season, Gates was an Assistant Coach in the NBA Development League with the Austin Toros, working under former NBA player and Toros head coach Dennis Johnson.

Coach Gates attended Boise State University from 1991-96. He and his wife Robin reside in Boise.

RANDY LIVINGSTON ASSOCIATE HEAD COACH

Associate Head Coach Randy Livingston joins the Stampede for his first season in a coaching role. Livingston was instrumental as a player last season, leading the Stampede to winning a D-League Championship.

A native of Louisiana, Livingston attended Louisiana State University for two years. Despite a college career plagued by various injuries, Livingston made it to the NBA as a second-round draft pick of the Houston Rockets in 1996 and appeared in 64 games as a rookie.

Over the next 11 seasons, Livingston played with the Atlanta Hawks, Phoenix Suns, Golden State Warriors, Seattle SuperSonics, New Orleans Hornets, Los Angeles Clippers, Chicago Bulls, and the Utah Jazz. Livingston also spent some time in the Turkish basketball league playing for Galatasaray.

In between his NBA contracts and overseas travel, he had several stints in the CBA playing for the Sioux Falls Skyforce and the Idaho Stampede. Most recently, Livingston was named the 2007 NBA Development League's MVP.

Livingston announced his retirement from playing basketball at the end of the 2007-08 D-League season. This announcement came after he helped lead the Idaho Stampede to the 2008 NBA Development League Championship where they clinched the series 2-1 over the Austin Toros. Livingston ended his playing career as the Stampede's leader in points scored (2,224) and games played (163).

JOEL ABELSON ASSISTANT COACH

Joel Abelson will also be joining the Stampede as an assistant coach for the 2008-09 season. Abelson spent last season with the Tulsa 66ers as an assistant coach.

The Michigan graduate spent this past summer working at Abunassar Impact Basketball in Las Vegas, training NBA stars such as Baron Davis, Jermaine O'Neal, Chauncey Billups, and Paul Pierce. He has also worked in basketball operations for the Charlotte Bobcats in 2007.

Abelson will reside in Boise.

BEN HEMPHILL DIRECTOR OF BASKETBALL OPERATIONS

Ben Hemphill joins the Idaho Stampede for a second season and his first as the Director of Basketball Operations. Hemphill will be responsible for various operational duties within the Stampede organization.

Originally from Washington, Hemphill graduated from Skyline high school in 2005. He is majoring in Business Management Administration at Boise State University.

Hemphill resides in Boise.

KEVIN TAYLOR
ATHLETIC TRAINER

Kevin Taylor is back with the Idaho Stampede for a third season as Head Athletic Trainer. Taylor is a La Center, Washington native. He received his Bachelors of Science Degree in Athletic Training from Boise State University in 1997 and his Master's of Science Degree in Sports Studies from the University of Kansas in 2000. He is a NATA Certified Athletic Trainer (ATC) and served as Head Athletic Trainer for Blue Valley North High School (Kansas) from 1997 to 2002.

From 1999 to 2002, Kevin was the Outreach Coordinator for SportsCare (providing certified athletic trainers to 14 Kansas and Missouri high schools) while also overseeing Sport Dynamics' sport performance training. From 1998 to 2001 he served as the Head Athletic Trainer for the Kansas Plainsmen minor league football team.

Kevin was the head Athletic Trainer for the Idaho Steelheads for the 2002-03 season while being an ATC specializing in sports performance at The Athletic Training Center from September 2002 to April 2006.

Kevin and his wife Heather have two daughters and reside in Star.

THE TEAM



2007-08 IDAHO STAMPEDE TRAINING CAMP ROSTER

PLAYER	POS	HT	WT	FROM
Mildon Ambres	F	6-6	215	Southern Nazarene
Ryan Appleby	G	6-2	170	Washington
Tim Barnes	G	5-11	180	Cal. St. Bakersfield
Anthony Coleman	F	6-10	220	Long Beach St.
Casey Cook	F	6-8	220	UCSB
Jermareo Davidson	C	6-10	230	Alabama
Jason Ellis	F	6-7	200	Boise St.
Coby Karl	G	6-5	215	Boise St.
Reggie Larry	F	6-6	225	Boise St.
L.P. Levros	F	6-6	210	RICC
Brent Petway	G	6-7	225	Michigan
Ernest Scott	F	6-7	215	Valdosta State
Ryan Schmidt	F	6-8	220	Western Oregon
Jamaal Tatum	G	6-2	175	Southern Illinois
Rashad West	G	6-1	180	Hampton

*Rosters subject to change.

Rosters cut to 12 players by November 20, 2008. Rosters cut to maximum 10 players by November 26, 2008.



Mildon Ambres

Position: Forward

Height/Weight: 6-6 / 215

College: Southern Nazarene

Pro Career Highlights: Spent the 2007-08 season Romania with CSU Caudripol Brasov, averaging 18.1 points and 8.5 rebounds in 26 games.

College Highlights: Earned First Team All-SAC honors as a senior. Finished collegiate career at Southern Nazarene after playing freshman season at LSU and routing through Southern Miss. Sat out the 2003-04 season at Southern Miss under NCAA transfer rules. **Senior (2006-07):** Averaged 15.2 points and 8.2 rebounds. Named SAC Tournament MVP. **Junior (2005-06):** At Southern Miss, averaged 6.4 points and 4.1 rebounds. **Sophomore (2004-05):** Averaged 7.7 points and 5.0 rebounds. **Freshman (2002-03):** At LSU, sat out the season as a redshirt.

Personal: Majored in mass communication. Father, Milton, played at Southern University in Baton Rouge, La.



Ryan Appleby

Full Name: Ryan Mychal Appleby

Position: Guard

Height/Weight: 6-3 / 170

Birthdate: January 1, 1984 (Seattle)

High School: Stanwood HS (Stanwood, Wash.)

College: Washington

Florida

Season														
2003-04	23	6	18	.333	7	10	.700	12	27	22	5	2	24	1.0

Three-point field goals: 2003-04, 5-for-14 (.357). **Totals: 5-for-14 (.357).**

Washington

Season														
2005-06	33	85	194	.438	20	25	.800	45	62	51	17	1	260	7.9
2006-07	32	107	258	.415	38	41	.927	61	70	49	25	6	336	10.5
2007-08	26	96	245	.392	23	27	.852	31	36	31	9	3	292	11.2
Totals	91	288	697	.413	81	93	.871	137	168	131	51	10	888	9.8

Three-point field goals: 2005-06, 70-for-165 (.424); 2006-07, 84-for-194 (.433); 2007-08, 77-for-200 (.385). **Totals: 231-for-559 (.413).**

College Highlights: Finished collegiate career as Washington's all-time leader in three-point field goals (231) and ranked third in three-point field goal percentage (.413). Named Pac-10 Newcomer of the Year as a sophomore. Played final three seasons at Washington after playing freshman season at Florida. Sat out the 2004-05 season at Washington under NCAA transfer rules.

Senior (2007-08): Averaged 11.2 points and 1.4 assists. Started 25 of 26 games, missing the first seven games of the year due to a hand injury. Scored in double figures 14 times. Made five or more threes five times. Set a school record with nine threes in scoring a career-high 32 points at Oregon State. Sank 7-for-11 from three-point range in scoring 21 points and dished out a season-high four assists vs. Portland State. Posted 18 points at Pittsburgh and vs. Portland in his first two appearances of the season.

Junior (2006-07): Averaged 10.5 points and 2.2 assists. Ranked fifth in the Pac-10 in three-point field goal percentage (.433) and second in three-point field goals made (84). Set a school single season record with 84 made threes. Started 24 of 32 games. Scored in double figures 17 times, posting a season-high 24 points on 9-for-11 shooting, 6-for-8 from three-point range vs. Southern Utah. Dished out a career-high eight assists at Gonzaga. Scored 20 points vs. Arizona State. Tallied 22 points vs. USC.

Sophomore (2005-06): Averaged 7.9 points and 1.9 assists in 23.0 minutes a contest. Ranked third in the Pac-10 in three-point field goal percentage (.424) and sixth in total three-point field goals made (70). Started once. Scored in double figures 13 times. Registered a season-high 18 points and six made threes vs. Loyola Marymount. Tallied 12 points and a season-high six assists vs. USC. Scored 14 points at Arizona.

Freshman (2003-04): At Florida, averaged 1.0 points and 1.2 assists in 8.0 minutes a contest. Started once. Recorded season highs of six points and six assists in the season opener vs. Montana State. Dished out four assists vs. Florida A&M. Scored five points in six minutes vs. Kentucky in the championship game of the SEC Tournament.

Personal: Majored in sports management. Father, Mike, played collegiately at Pacific (Ore.). Enjoys watching videos of the ball-handling and passing drills of basketball hall-of-famer "Pistol" Pete Maravich.



Tim Barnes

Position: Forward

Height/Weight: 5-11 / 180

Birthdate: Oct. 21, 1981

College: Cal St. Bakersfield

Born Oct. 21, 1981, in Chicago, Ill

Outlook:

A quick, slashing guard who is excellent at dribble penetration...an outstanding shooter with excellent range.

Career:

Henderson, Ky.

2001-2002: Southeastern Illinois Community College: 19.4 ppg, 7.2 apg and 2.1 spg

2002-2003: Iowa St. (NCAA): 31 games: 11.3ppg, 3.6rpg, 5.0apg

2005-2006: Cal. St.-Bakersfield (NCAA2)

2006: Drafted by Oklahoma Storm (USBL, 1rd(3)): 30 games: 5.6ppg, 5.6rpg, 3.6apg, 1.4spg, FGP: 36.5%, 3PT: 25.0%, FT: 82.8%)

2006: Oklahoma Storm (USBL)

2006: Oklahoma Storm (USBL)

2006-2007: Bakersfield Jam (D-League), left in Dec.'06, then joined Idaho Stampede (D-League Western Div): 42 games: 3.5ppg, 1.5rpg, 2.5apg

2007: In May signed at Oklahoma Storm (USBL, 1T): 24 games: 5.8ppg, 2.5rpg, 2.6apg

Awards/Achievements:

NJCAA Div1 All American 2nd Team -02

Big 12 Conf. All-Newcomer Team -03

CCAA Runner-Up -06

All-CCAA 1st Team -06

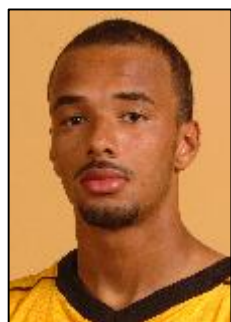
USBL Midwestern Division Champion -06

USBL Regular Season Champion -06

USBL Semifinals -06

USBL All-Rookie Team -06

D-League Semifinals -07



Anthony Coleman

Full Name: Anthony Joseph Coleman

Position: Forward

Height/Weight: 6-11 / 215

Birthdate: October 6, 1982 (Westminster, Calif.)

High School: Centennial HS (Compton, Calif.)

College: Long Beach State

Long Beach State

Season	G	FGM	FGA	PCT	FTM	FTA	PCT	REB	AST	TO	STL	BL	PTS	
2003-04	2	5	18	.278	3	4	.750	14	4	6	2	2	15	7.5
2004-05	17	52	119	.437	27	42	.643	85	11	26	3	14	140	8.2
Totals	19	57	137	.416	30	46	.652	99	15	32	5	16	155	8.2

Three-point field goals: 2003-04, 2-for-9 (.222); 2004-05, 9-for-38 (.237). **Totals: 11-for-47 (.234).**

Anaheim/Bakersfield - NBA D-League

Season	G	FGM	FGA	PCT	FTM	FTA	PCT	REB	AST	TO	STL	BL	PTS	
2005-06	4	3	8	.375	0	0	.000	7	2	0	0	1	6	1.5
2006-07	49	119	298	.399	62	76	.816	235	52	50	29	24	321	6.6
Totals	53	122	306	.399	62	76	.816	242	54	50	29	25	327	6.2

Three-point field goals: 2005-06, 0-for-1; 2006-07, 21-for-61 (.344). **Totals, 21-for-62 (.339).**

New Yorker Phantoms Braunschweig - Germany

Season	G	FGM	FGA	PCT	FTM	FTA	PCT	REB	AST	TO	STL	BL	PTS	
2007-08	30	49	119	.412	20	27	.741	81	11	16	9	10	134	4.5

Three-point field goals: 2007-08, 16-for-49 (.327). **Totals, 16-for-49 (.327).**

Pro Career Highlights: Spent the 2007-08 season in Germany, averaging 4.5 points and 2.7 rebounds in 30 games for New Yorker Phantoms Braunschweig in Germany. Participated in NBA summer league with the Milwaukee Bucks in 2007. Played with the Bakersfield Jam in the NBA Developmental League in 2006-07, averaging 6.6 points and 4.8 rebounds in 49 games. Selected by the Jam in the fourth round (38th pick overall) of the 2006 NBA D-League draft. Appeared in four games for the Albuquerque Thunderbirds in the NBA D-League in 2005-06, averaging 1.5 points and 1.8 rebounds.

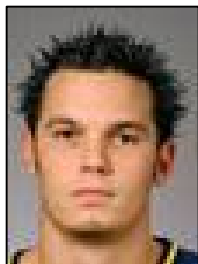
College Highlights: Finished collegiate career at Long Beach State after starting at Xavier (Ohio). Became eligible to play at Long Beach State in December of 2003. Spent the 2000-01 season at Xavier as a redshirt.

Senior (2004-05): Averaged 8.2 points and 5.0 rebounds in 21.4 minutes a contest. Appeared in 17 games, missing 12 games in mid-season due to a recurring shin problem. Started eight times. Scored career-high 24 points and grabbed eight rebounds vs. Sacramento State. Posted 17 points vs. Pepperdine. Tallied 12 points and a season-high nine rebounds at Idaho. Blocked career-high four shots at Hawaii. Registered nine points and nine rebounds in the Big West Tournament vs. UC Santa Barbara.

Junior (2003-04): Averaged 7.5 points and 7.0 rebounds, only appearing in two games due to a stress fracture in his left ankle. Tallied nine points and a career-high ten rebounds vs. Pacific and six points, four rebounds, and two blocks vs. Cal State Northridge.

Sophomore (2002-03): At Xavier, averaged 0.6 points and 1.0 rebounds in 6.8 minutes a contest. Played in five games before leaving the team in December. Scored three points vs. Stanford in the Pre-Season NIT. Grabbed three rebounds vs. Florida A&M.

Personal: Majored in business marketing.



Casey Cook

Position: Forward

Height/Weight: 6-8 / 220

College: UC Santa Barbara

Pro Career Highlights: Started the 2007-08 season in Argentina with Central Entrerriano Gualeguaychu, averaging 5.1 points and 2.8 rebounds in eight games. Moved on to Mexico with Caballeros de Sinaloa, averaging 15.2 points and 5.9 rebounds in 13 games. Played briefly in the IBL with the Santa Barbara Breakers in the summer of 2007 (statistics unavailable).

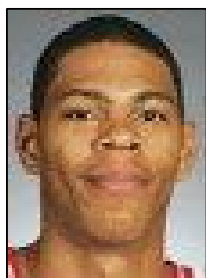
College Highlights: Senior (2004-05): Averaged 10.8 points and 5.5 rebounds. **Junior (2003-04):** Averaged 9.9 points and 4.6 rebounds.

Redshirt Sophomore (2002-03): Averaged 5.2 points and 3.5 rebounds. **Sophomore (2001-02):** Averaged 3.2 points and 2.8 rebounds.

Appeared in six games before partially tearing ligaments in his right thumb. Granted a medical redshirt and an extra year of eligibility.

Freshman (2000-01): Averaged 4.1 points and 3.1 rebounds.

Personal: Majored in sociology. Also played baseball in high school.



Jermareo Davidson

Position: Forward

Height/Weight: 6-10 / 215

Birthdate: November 15, 1984

College: Alabama

220lbs / 100kg

Born: Nov.15, 1984

Career:

Atlanta, GA/Wheeler

2003-2004: Alabama (NCAA): 33 games: 5.0ppg, 4.3rpg, 17ast

2004-2005: Alabama (NCAA): 32 games: 7.6ppg, 7.9rpg, 29ast, 1.5bpg, FGP: 57.7%

2005: NBA Draft candidate: withdrew his name just before the draft

2005-2006: Alabama (NCAA): 31 games: 14.3ppg, 8.9rpg, 1.2apg, 1.9bpg, FG: 47.7%, FT: 74.6%

2006-2007: Alabama (NCAA): 30 games: 14.0ppg, 8.2rpg, 1.5apg, 2.3bpg, FGP: 40.7%, 3Pts: 25.0%, FT: 77.5%

2007: drafted by Golden State Warriors (NBA,2rd(36)), traded to Charlotte Hornets

2007 July: Charlotte Bobcats (NBA) Summer Camp

2007 July: Pepsi Pro Summer League in Orlando (Charlotte Bobcats)

2007-2008: Charlotte Bobcats (NBA): 38 games: 3.2ppg, 1.6rpg, in Jan.'08 was assigned to Sioux Falls Skyforce (D-League), next month recalled to Charlotte Bobcats (NBA)

2008 July: NBA Summer League in Las Vegas (Charlotte Bobcats)

2008: Drafted by Idaho Stampede (D-League,1rd(3))

2008-2009: Charlotte Bobcats (NBA), left in Oct.'08

Awards/Achievements:

SEC Western Division Runner-Up -04, 06

SEC All-Freshman Team -04

NCAA Elite Eight -04

USA U18 National Team -04

SEC Regular Season (Western Div.) Champion -05

SEC Tournament Semifinals -05

All-SEC 3rd Team -05

USBWA All-NCAA District IV Team -06

All-SEC 1st Team -06

NABC All-NCAA District 6 1st Team -07

NCAA D1 Naismith Trophy -07

All-SEC 2nd Team -07



Jason Ellis

Position: Forward

Height/Weight: 6-7 / 200

Birthdate: 1981

High School: Kentridge HS (Kent, Wash.)

College: Boise State

Boise State

Season	G	FGM	FGA	PCT	FTM	FTA	PCT	REB	AST	TO	STL	BL	PTS	
2001-02	30	61	125	.488	31	45	.689	173	23	39	30	16	153	5.1
2002-03	29	102	208	.490	69	92	.750	227	26	51	24	27	273	9.4
2003-04	33	111	241	.461	64	94	.681	297	41	48	25	32	286	8.7
2004-05	28	113	231	.489	66	89	.742	251	41	67	14	28	292	10.4
Totals	120	387	805	.481	230	320	.719	948	131	205	93	103	1004	8.4

Idaho – NBA D-League

Season	G	FGM	FGA	PCT	FTM	FTA	PCT	REB	AST	TO	STL	BL	PTS	
2007-08	37	80	153	.523	39	47	.830	189	23	23	20	11	199	5.4

Three-point field goals: 2007-08, 0-for-1. **Totals, 0-for-1.**

Pro Career Highlights: Spent the 2007-08 season in the NBA Developmental League with the Idaho Stampede, averaging 5.4 points and 5.1 rebounds in 37 games. Started ten times. Played in Switzerland in 2006-07 with BC Boncourt (statistics unavailable). With BC Boncourt in 2005-06, averaged 15.4 points and 11.0 rebounds in 31 regular season games and contributed 15.7 points and 8.7 rebounds in six EuroCup Challenge games.

College Highlights: Earned WAC All-Defensive Team honors his junior and senior seasons. Finished collegiate career as Boise State's all-time leader in rebounds (948) and ranks third in career rebounding average (7.9 rpg). Also ranks second all-time in games played (120) and started (111), fifth all-time in blocked shots (103), and 17th all-time in scoring with 1,004 points. Started 111 of 120 career games. Posted 17 career double-doubles.

Senior (2006-07): Averaged 10.4 points and 9.0 rebounds. Started 25 of 28 games. Posted five double-doubles. Registered 23 points and seven rebounds at Idaho. Tallied 20 points and ten rebounds at BYU. Scored 18 points at San Jose State. Recorded 22 points and set a WAC Tournament record with 21 rebounds vs. Tulsa in the first round, breaking a record held by Wyoming's Theo Ratliff. Scored season-high 25 points and grabbed 17 rebounds in the semifinals vs. Fresno State.

Junior (2005-06): Averaged 8.7 points and 9.0 rebounds (ranked second in the WAC). Season total of 297 rebounds ranks third all-time in school history. Started all 33 games. Posted six double-doubles. Registered season-high 20 points on 9-for-11 shooting and grabbed 16 rebounds at Nevada. Tallied 16 points and a season-high 19 rebounds at Idaho. Posted 13 points and 15 rebounds vs. Portland. Pulled down 14 rebounds vs. UTEP in the regular season finale.

Sophomore (2004-05): Averaged 9.4 points and 7.8 rebounds (ranked third in the WAC). Started all 29 games. Scored in double figures 14 times and posted five double-doubles. Posted season-high 23 points on 8-for-11 shooting vs. Portland State. Tallied 15 points, 14 rebounds, a career-high five blocked shots, and three steals vs. SMU. Registered 15 points and ten rebounds vs. Hawaii and recorded 15 points and 14 rebounds in the rematch. Recorded 15 points and 14 rebounds vs. SMU in the first round of the WAC Tournament.

Freshman (2003-04): Averaged 5.1 points and 5.8 rebounds in 22.1 minutes a contest. Started 24 of 30 games. Registered season highs of 12 points and 11 rebounds vs. Lewis-Clark State. Scored 11 points vs. Portland State in his collegiate debut. Recorded 11 points and nine rebounds vs. Tulsa.

Personal: Majored in communications. Married with one son.



Coby Karl

Position: Forward
Height/Weight: 6-5 / 215
College: Boise State University

Very smart player who understands the game very well. Comes from a great basketball background (son of Milwaukee Bucks coach George Karl). Very skilled with a long wing span.

Career:

Mequon, WI / Homestead High School: averaging 17.5 points and 5.7 rebounds per game
2002-2003: Boise St. (NCAA): redshirted
2003-2004: Boise St. (NCAA): 33 games: 9.4ppg, 3.2rpg, 1.1apg
2004-2005: Boise St. (NCAA): 34 games: 12.7ppg, 3.7rpg, 3.8apg, 1.1spg, FGP: 40.8%, 3Pts: 37%
2005-2006: Boise St. (NCAA): 29 games: 17.2ppg, 5.1rpg, 4.0apg, 1.0spg, FG: 42.7%, 3PT: 39.5%, FT: 79.6%
2006-2007: Boise St. (NCAA,1T): 31 games: 14.8ppg, 4.1rpg, 4.0apg, FGP: 40.8%, 3Pts: 37.0%, FT: 83.5%
2007 July: NBA Summer League in Las Vegas (Los Angeles Lakers)
2007: Drafted by Albany Patroons (CBA,1rd(9))
2007-2008: Los Angeles Lakers (NBA), Regular Season: 17 games: 1.8ppg; in Nov.'07 assigned to Los Angeles D-Fenders (D-League): 17 games: Score-5(17.5ppg), 5.5rpg, 4.2apg, 1.1spg, FGP: 45%, 3PT-3(41.1%), FT: 83.3%, in Dec.'07 was recalled from Los Angeles Lakers (NBA), in Feb.'08 assigned to Los Angeles D-Fenders (D-League), the same month recalled to Los Angeles Lakers (NBA), in Apr.'08 moved to Los Angeles D-Fenders (D-League)
2008 July: NBA Summer League in Las Vegas (Los Angeles Lakers)
2008-2009: Los Angeles Lakers (NBA), left in Oct.'08

Awards/Achievements:

HS first-team all-conference and honorable mention all-state -02
WAC Tournament Finalist -05
USBWA All-NCAA District VIII Team -06
All-WAC 2nd Team -06
NABC All-NCAA District 13 2nd Team -07
All-WAC 1st Team -07
NBA Finalist -08
NBA Western Conference Champion -08
NBA Pacific Division Champion -08



L.P. Levros

Position: Forward

Height/Weight: 6-6 / 210

Birthdate: September 19, 1983

College: Rhode Island Community College

Born: Sep.19, 1983 in Montreal, in St-LÃ©onard

Full name: Louis Patrick Levros

Personal:

Louis-Patrick Levros grew up in Laval but moved to Rhode Island to attend Cranston High School East. Named team captain his senior year, the forward led the team to its first ever state championship in 2002. That year, Levros received Second Team All-Division honours, he was named to the All-Tournament Team for his playoff performance and was voted Team MVP. Levros also represented his school on the soccer team as a striker. Levros would then join the Community College of Rhode Island (CCRI) from 2002 to 2004. He helped the team reach the regional final during his sophomore season. He earned CCRI Athlete of the Week honours in December 2003.

Outlook:

L.P. Levros is a very athletic player who runs the floor. The 3 pts shot is one of his strenghts. He is also a very good rebounder on defense as well as on offense. He likes to attack the rim and go up strong. His great court vision allows him to make key passes at opportune times and also to create steals. He has a good attitude and is a team-concept player who is very coachable due to his game understanding.

Career:

2003-2004: Community College of Rhode Island (NJCAA): 7.5ppg, 3rpg, 1apg

2004-2005: Community College of Rhode Island (NJCAA): 15ppg, 5.5rpg, 2.5apg

2005-2006: Montreal Matrix (ABA), in Dec.'05 signed at Buffalo Rapids (ABA), in Feb.'06 joined back Montreal Matrix (ABA): 5ppg, 2rpg, 0.5 apg

2006-2007: Quebec City (ABA): 13ppg, 6rpg, 2.5apg

2007 July: Summer Pro-Am League in Long Beach (ILN Industries): 10ppg, 3.5rpg, 1.5apg

2007-2008: Orange County Gladiators (ABA), in Jan.'08 moved to Quebec City Kebekwa (ABA)

2008: October: Idaho Stampede (D-League) open tryout in Toronto

2008: Drafted by Idaho Stampede (D-League,9rd(131))

Awards/Achievements:

ABA Quarterfinals -08



Height/Weight: 6-6 / 225

Boise State University

Season Averages																	
SEASON	MIN	PTS	REB	AST	TO	A/T	STL	BLK	PF	FG%	FT%	3P%	PPS				
2005-2006	Did not play.																
2006-2007	30.1	14.1	8.1	.9	2.1	.44	.7	1.4	1.8	.486	.639	.192	1.25				
2007-2008	34.4	19.4	9.2	1.8	2.6	.69	1.4	1.0	2.0	.536	.638	.430	1.45				
2008-2009	Did not play.																
Season Totals									Rebounds								
SEASON	GP	MIN	FG	FGA	FTM	FTA	3PM	3PA	PTS	OFF	DEF	TOT	AST	TO	STL	BLK	PF
2005-2006	Did not play.																
2006-2007	31	933	170	350	92	144	5	26	437	74	178	252	29	66	22	44	56
2007-2008	34	1169	244	455	136	213	37	86	661	84	229	313	62	90	48	35	67
2008-2009	Did not play.																



Brent Petway

Full Name: Brenton LaJames Petway

Position: Forward

Height/Weight: 6-7 / 225

Birthdate: May 12, 1985 (Warner Robins, Ga.)

High School: Griffin HS (McDonough, Ga.)

College: Michigan

CAREER SEASON AVERAGES																
Year	Team	G	GS	MPG	FG%	3P%	FT%	OFF	DEF	RPG	APG	SPG	BPG	TO	PF	PPG
07-08	IDA	45	27	24.2	.546	.297	.592	1.2	2.6	3.8	1.3	0.8	1.5	1.22	2.00	7.2

CAREER SEASON TOTALS																
Year	Team	G	GS	MIN	FGM-A	3PM-A	FTM-A	OFF	DEF	REB	AST	STL	BLK	TO	PF	PTS
07-08	IDA	45	27	1,087	136-249	11-37	42-71	55	116	171	59	35	68	55	103	325

CAREER PLAYOFF AVERAGES																
Year	Team	G	GS	MPG	FG%	3P%	FT%	OFF	DEF	RPG	APG	SPG	BPG	TO	PF	PPG
07-08	IDA	4	4	24.8	.611	.000	.900	1.8	2.5	4.3	0.5	1.0	1.0	0.50	1.00	7.8

CAREER PLAYOFF TOTALS																
Year	Team	G	GS	MIN	FGM-A	3PM-A	FTM-A	OFF	DEF	REB	AST	STL	BLK	TO	PF	PTS
07-08	IDA	4	4	99	11-18	0-1	9-10	7	10	17	2	4	4	2	4	31

College Highlights: Finished collegiate career as Michigan's fourth all-time leader in field goal percentage (.602) and fifth in blocked shots (146). Started 37 of 119 career games. Was the runner-up of the Slam Dunk contest at the 19th Annual College Slam Dunk and Three-Point Championships held at the 2007 NCAA Final Four.

Senior (2006-07): Averaged 6.8 points, 5.9 rebounds, and 1.5 blocked shots. Started 32 of 35 games. Scored in double figures eight times. Registered three double-doubles. Scored career-high 18 points on 7-for-9 shooting and grabbed seven rebounds vs. Minnesota. Posted a 13-point, 11-rebound double-double vs. Wisconsin-Milwaukee. Pulled down a career-high 13 rebounds vs. Davidson. Registered a season-high five blocked shots at North Carolina State. Tallied 11 points and eight rebounds vs. Ohio State. Scored eight points and grabbed 12 rebounds vs. Ohio State in the second round of the Big Ten Tournament.

Junior (2005-06): Averaged 5.5 points and 3.6 rebounds in 16.1 minutes a contest. Missed the first semester due to academic ineligibility. Scored in double figures there times. Tallied ten points, five rebounds, and a season-high four blocked shots at Michigan State. Grabbed a season-high 11 rebounds at Ohio State. Scored ten points vs. UTEP in the first round of the post-season NIT. Registered a season-high 12 points vs. South Carolina in the NIT championship game.

Sophomore (2004-05): Averaged 7.1 points, 5.4 rebounds, and 1.6 blocked shots in 21.4 minutes a contest. Started five times. Scored in double figures nine times. Posted three double-doubles. Registered season-high 16 points and grabbed ten rebounds vs. Iowa. Tallied 13 points and a season-high 11 rebounds vs. Boston University. Posted ten points and ten rebounds vs. Wisconsin. Scored 11 points and recorded a season-high seven blocked shots vs. Sacramento State. Recorded 11 points and six blocks at Northwestern.

Freshman (2003-04): Averaged 3.9 points and 3.4 rebounds in 13.5 minutes a contest. Scored season-high 12 points vs. High Point. Matched season high with 12 points, pulled down a season-high eight rebounds, and matched a season-high with three blocked shots vs. Ohio State.

Personal: Majored in general studies. Nickname is "Air Georgia". An aspiring hip-hop rapper who recorded a team warm-up song called "No. 1".



Ryan Schmidt

Position: Forward

Height/Weight: 6-8 / 220

Birthdate: January 20, 1984

College: Western Oregon

Outlook:

Versatile, athletic player who can play many positions. A scorer with a good outside shot and a great midrange game. Good ball handler who can create his own shot and get to the rim. Also very unselfish and creates shots for teammates. Plays the game with a lot of energy and enthusiasm. Solid defender and rebounder, but could improve in those areas, mostly rebounding

Career:

2002-2003: Linn-Benton C. C: 17.5 ppg, 5.3 rpg, 3.6 apg

2003-2004: Linn-Benton C. C: 21.4 ppg, 7.4 rpg, 4.2 apg

2004-2005: University of Hawaii: Red shirt Season

2006-2007: Western Oregon University (NCAA2,1T): 13.4 ppg, 5.0 rpg, 2.3 apg

2007-2008: W. Oregon (NCAA2)

2008: Drafted by Idaho Stampede (D-League, 10rd(158))

Awards/Achievements:

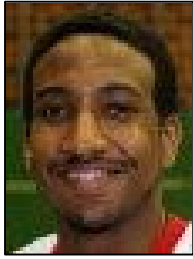
Linn-Benton C. C- 2nd team all conference -03

Linn-Benton C. C- 1st team all conference -04

Honorable Mention all conference (GNAC) -07

Two time conference player of the week (December. 18th, January 2nd), Debeni

Memorial all tournament team selection, Wolfpack Classic MVP, second on team in all three major statistical categories (ppg, rpg, apg)



Ernest Scott

Full Name: Ernest Scott

Position: Forward

Height/Weight: 6-7 / 215

Birthdate: August 28, 1982 (Marietta, GA)

High School: Marietta High School (GA)

College: Valdosta State

Outlook:

Very consistent on offense and defense, very competitive play, good outside shooter, strong team-player who scorers when needed, very coachable player who gets the job done

Career:

2002-2003: Valdosta State University (NCAA II)

2003-2004: Valdosta State University (NCAA II): 29 games: 11.6 ppg, 6.1 rpg, 1.5 apg

2004 June: VCU Invitational Showcase in Richmond, Va. (Hypertension team) 4g 13.2ppg 7.0rpg 0.2apg

2004 July: Independance Bank Pro-Am in Owensboro, Ky. (Granger Sports team)

2004-2005: Wolfenbüttel Dukes (GER-2. Bundesliga, 1T): 13 games: 25.8ppg, 8.6rpg, 3.2apg, 2.5spg, 1.2bpg, 2FGP: 63.1%, 3FGP: 25.5%, FT: 85.2%: left at the end of Dec.'04, then signed at Black Star Mersch (LUX-DBBL): Score-2(31.1ppg)

2005: Mississippi HardHats (WBA, 1T): 19 games: 18.9ppg, Reb-5(9.4rpg), 1.7apg, 1.5spg, 1.0bpg, FGP: 53.1%, 3FGP: 44.0%, FT: 77.1%

2005-2006: Meyrin Grand-Saconnex Basket (SUI-LNA): 22 games: Score-4(21.1ppg), 6.0rpg, 2.3apg, 2.2spg, 1.4bpg, 2FGP: 57.3%, 3PT: 35.3%, FT: 68.9%

2006: Mississippi HardHats (WBA)

2006: Oklahoma Storm (USBL, 1T): 30 games: 12.3ppg, 12.3rpg, 1.1apg, 1.1spg, FGP: 46.3%, 3PT: 34.2%, FT: 81.2%

2006-2007: TBB Trier (GER-1. Bundesliga): 34 games: 7.2ppg, 3.7rpg, 1.1apg, 2FGP: 53.7%, 3FGP: 33.7%, FT: 70.2%

2007: Cartersville Baseline (SEBL, 1T)

Awards/Achievements:

All-GFC First Team (All Gulf Conference) -04

Eurobasket.com All-Luxembourg League 2nd Team -05

Eurobasket.com Luxembourg League All-Imports Team -05

Eurobasket.com Luxembourg League All-Defensive Team -05

WBA Finalist -05

All-WBA 1st Team -05

USBL Midwestern Division Champion -06

USBL Regular Season Champion -06

USBL Semifinals -06

All-SEBL Metro South Division 2nd Team -06

SEBL Metro A-League North Division Champion -07

SEBL Metro A-League League Champion -07

SEBL Metro A-League 1st Team All-League selection -07

SEBL Metro A-League Tournament MVP-07

All-SEBL Metro A-League North Division 1st Team -07



Jamaal Tatum

Full Name: Jamaal Tatum
Position: Guard
Height/Weight: 6-2 / 175
Birthdate: September 13, 1984
High School: Helias (Jefferson City, MO)
College: Southern Illinois

Southern Illinois														
Season	G	FGM	FGA	PCT	FTM	FTA	PCT	REB	AST	TO	STL	BL	PTS	AVG
2003-04	29	73	174	.420	48	66	.727	58	42	29	36	2	225	7.8
2004-05	35	142	361	.393	76	98	.776	85	78	56	40	3	431	12.3
2005-06	32	463	446	.365	107	137	.781	82	104	85	42	3	480	15.0
2006-07	35	172	395	.435	116	149	.779	104	85	83	41	0	531	15.2
Totals	131	923	1376	.671	347	450	.771	329	309	253	159	8	1667	12.7

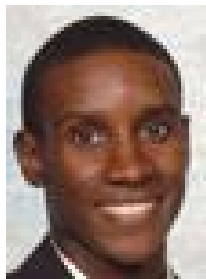
Professional Career Profile: Signed a non-guaranteed contract to play with the Atlanta Hawks in their 2007 training camp, was released on October 2.

College Career Profile:
Rising to the status of a star basketball player at Southern Illinois, Tatum is known for his incredible quickness and great long-range shooting. In only his freshman season, he was second in the Missouri Valley Conference in three-point shooting (45.6%).

By the time he was a junior, he had led the Salukis back to prominence and took them to the 2006 NCAA Tournament as a #11 seed, where they would lose to West Virginia in the first round, but Tatum was named the CBS player of the game for his team. That year, he led the team in scoring (15 ppg) and received various Missouri Valley Conference awards.

In his senior season as a Saluki, Tatum received Missouri Valley Conference Player of the Year honors. Tatum has risen his game to a new level and has helped SIU to become, what many think, a prominent basketball program. Along with fellow senior Tony Young and star junior Randal Falker, Tatum brought the team high into the AP and coaches' poll, with a 27-6 record (including the MVC Tournament) and an RPI of #7 in the country, ahead of such powerhouses as Memphis (#8) and Kansas (#11). The Salukis received a #4 seed in the 2007 NCAA Tournament and went on to easily beat Holy Cross in the first round. Facing #5 seed Virginia Tech in the second round, they won surprisingly easily, holding the Hokies to just 48 points with great defense, winning 63-48. Tatum had 21 points and was 7-for-15 from field goal range in the win. They faced top-seeded Kansas in their first Sweet Sixteen appearance since the 2007 tournament, and lost a tight game, 61-58, because of some key referee errors throughout the game. Tatum came up with some big shots at the end, but his 19 points wasn't enough to defeat the Jayhawks. However, with their 29th win of the season coming against Virginia Tech, the Salukis surpassed the win total of the 2001 team.

Personal: Tatum, also has a a cousin by the name of anthony tatum who currently plays for the dusable panthers.



Rashad West

Position: Guard

Height/Weight: 6-1 / 180

Birthdate: September 19, 1983

College: Rhode Island Community College

Career:

Raleigh, N.C. (Maine Central Inst.)

2004-2005: Hampton (NCAA): 30 games: 5.9ppg, 1.2rpg, 1.5apg, FGP: 33.3%, 3FGP: 34.7%

2005-2006: Hampton (NCAA): 32 games: 9.8ppg, 1.9rpg, 1.8apg, FGP: 39.3%, 3PT: 34.6%, FT: 72.9%

2006-2007: Hampton (NCAA): 31 games: 17.8ppg, 3.6rpg, 2.6apg, 1.9spg, FGP: 39.5%, 3Pts: 39.3%, FT: 80.3%

2007-2008: Hampton (NCAA): 30 games: 17.2ppg, 3.1rpg, 2.9apg, 1.3spg, FGP: 38.0%, 3Pts: 32.0%, FT: 72.2%

2008: Drafted by East Kentucky Miners (CBA,4rd(17))

2008: Drafted by Idaho Stampede (D-League,8rd(126))

Awards/Achievements:

MEAC Regular Season Runner-Up -05, 08

MEAC Tournament Finalist -05

MEAC Tournament Winner -06

MEAC Tournament MVP -06

MEAC All-Tournament Team -06

All-MEAC 1st Team -07

All-MEAC 2nd Team -08



THE HISTORY

1997-98 (INAUGURAL SEASON)

REGULAR SEASON RECORD: 25-31
PLAYOFF RECORD: 2-3

HEAD COACH
BOBBY DYE

AWARDS

NATE HUFFMAN – ALL-ROOKIE FIRST TEAM

NBA CALL-UPS

RUSTY LARUE - BULLS
LLOYD DANIELS - RAPTORS
LLOYD DANIELS - HAWKS

AMERICAN CONFERENCE

EASTERN DIVISION	HOME		AWAY	
	W	L	W	L
=====				
Fort Wayne Fury	31-25	17-11	14-14	
Rockford Lightning	29-27	17-11	12-16	
Connecticut Pride	26-30	15-13	11-17	
Grand Rapids Hoops	21-35	13-15	8-20	

NATIONAL CONFERENCE

SOUTHERN DIVISION	HOME		AWAY	
	W	L	W	L
=====				
Quad City Thunder	38-18	22-6	16-12	
Sioux Falls Skyforce	31-25	18-10	13-15	
Yakima Sun Kings	26-30	17-11	9-19	
Idaho Stampede	25-31	18-10	7-21	
La Crosse Bobcats	25-31	17-11	8-20	

1997-98 REGULAR SEASON STATISTICS

IDAHO	G	GS	MIN	FGM	FGA	Pct.	FTM	FTA	Pct.	3PM	3PA	Pct.	PTS	Avg.	OR	DR	REB	Avg.	AST	PF	TO	BS	ST
Joe Courtney	13	12	471	93	211	0.441	60	77	0.779	0	4	0.000	246	18.9	42	71	113	8.7	25	50	35	14	13
(Total)	49	42	1636	332	692	0.480	187	233	0.803	1	9	0.111	852	17.4	88	226	314	6.4	64	161	136	37	29
Greg Sutton	7	6	252	44	93	0.473	20	26	0.769	22	46	0.478	130	18.6	1	19	20	2.9	40	28	19	0	15
(Total)	26	24	787	133	281	0.473	67	82	0.817	56	131	0.427	389	15.0	6	57	63	2.4	134	86	68	4	32
Lloyd Daniels	32	28	1208	205	505	0.406	84	101	0.832	83	217	0.382	577	18.0	44	109	153	4.8	141	63	94	24	43
Tim Breaux	20	17	738	120	289	0.415	51	83	0.614	33	82	0.402	324	16.2	22	37	59	3.0	63	44	33	7	21
Lawrence Moten	5	2	136	25	58	0.431	19	21	0.905	4	15	0.267	73	14.6	10	7	17	3.4	12	11	6	1	3
(Total)	14	2	304	55	139	0.396	29	33	0.879	10	35	0.286	149	10.6	20	13	33	2.4	21	25	20	3	12
Ashraf Amaya	34	27	1112	170	341	0.499	128	180	0.711	1	4	0.250	469	13.8	107	208	315	9.3	50	134	90	32	30
Devin Davis	46	35	1317	217	502	0.432	190	256	0.742	0	4	0.000	624	13.6	160	291	451	9.8	86	183	122	16	41
Dennis Edwards	44	8	933	262	459	0.571	60	111	0.541	0	4	0.000	584	13.3	56	65	121	2.8	73	80	65	2	31
Donald Royal	9	6	237	32	87	0.368	42	48	0.875	0	0	0.000	106	11.8	6	20	26	2.9	16	13	17	1	10
Darryl Johnson	18	15	617	86	164	0.524	8	12	0.667	25	57	0.439	205	11.4	9	26	35	1.9	75	55	33	2	21
Nate Huffman	56	38	1408	255	461	0.553	117	146	0.801	1	4	0.250	628	11.2	141	287	428	7.6	56	190	96	100	58
Rusty LaRue	1	1	35	4	12	0.333	2	2	1.000	1	4	0.250	11	11.0	0	2	2	2.0	7	3	1	0	2
Ernest Hall	47	45	1665	185	412	0.449	124	164	0.756	18	61	0.295	512	10.9	41	87	128	2.7	350	143	91	2	67
Greg Graham	15	2	387	48	127	0.378	35	45	0.778	7	36	0.194	138	9.2	6	18	24	1.6	48	35	33	1	32
Nate Erdmann	39	19	971	128	283	0.452	47	65	0.723	44	116	0.379	347	8.9	24	68	92	2.4	81	126	65	9	29
Erik Martin	10	9	237	33	67	0.493	16	30	0.533	0	0	0.000	82	8.2	23	24	47	4.7	32	27	18	10	4
Ira Newble	16	1	260	50	87	0.575	20	29	0.690	3	6	0.500	123	7.7	28	38	66	4.1	10	40	10	8	14
Jared Prickett	34	1	650	86	186	0.462	44	76	0.579	1	6	0.167	217	6.4	62	94	156	4.6	38	70	47	14	11
Larry Krystowskiak	4	0	71	10	20	0.500	4	4	1.000	0	1	0.000	24	6.0	11	12	23	5.8	8	10	5	1	2
Joe Wyatt	38	5	635	79	195	0.405	23	35	0.657	19	67	0.284	200	5.3	15	71	86	2.3	87	95	46	3	25
Willie Murdaugh	6	1	78	3	11	0.273	9	10	0.900	0	6	0.000	15	2.5	8	10	18	3.0	10	14	5	0	6
Ochiel Swaby	5	2	56	4	12	0.333	4	8	0.500	0	0	0.000	12	2.4	3	5	8	1.6	2	10	7	3	2
Deryl Cunningham	1	0	16	0	0	0.000	1	2	0.500	0	0	0.000	1	1.0	0	1	1	1.0	2	1	1	0	1
TOTALS	56		13490	2139	4582	0.467	1108	1531	0.724	262	740	0.354	5648	100.9	819	1570	2389	42.7	1312	1425	939	250	481
OPPONENTS	56		13490	2146	4480	0.479	1137	1558	0.730	228	659	0.346	5657	101.0	704	1547	2251	40.2	1164	1326	947	276	462

1997-98 CBA PLAYOFF STATISTICS

FORT WAYNE VS. IDAHO

March 24 - Fort Wayne 102, Idaho 82 (Fort Wayne leads series 1-0)
March 27 - Idaho 91, Fort Wayne 90 (Series tied 1-1)
March 31 - Fort Wayne 104, Idaho 91 (Fort Wayne leads series 2-1)
April 2 - Idaho 109, Fort Wayne 103 (Series tied 2-2)
April 4 - Fort Wayne 112, Idaho 93 (Fort Wayne wins series)

IDAHO	G	GS	MIN	FGM	FGA	Pct.	FTM	FTA	Pct.	3PM	3PA	Pct.	PTS	Avg.	OR	DR	REB	Avg.	AST	PF	TO	BS	ST
Nate Huffman	5	4	139	32	56	0.571	6	12	0.500	0	1	0.000	70	14.0	21	19	40	8.0	4	15	6	12	10
Joe Courtney	5	5	160	27	65	0.415	9	10	0.900	0	0	0.000	63	12.6	12	23	35	7.0	8	19	15	3	5
Lloyd Daniels	5	5	153	17	56	0.304	15	18	0.833	7	26	0.269	56	11.2	3	10	13	2.6	8	7	5	3	8
Ernest Hall	5	5	176	18	43	0.419	10	12	0.833	8	19	0.421	54	10.8	6	9	15	3.0	28	16	10	0	8
Ashraf Amaya	5	0	124	20	41	0.488	11	24	0.458	1	2	0.500	52	10.4	19	25	44	8.8	8	20	4	3	5
Lawrence Moten	5	3	112	22	54	0.407	6	8	0.750	2	7	0.286	52	10.4	4	4	8	1.6	6	14	10	2	8
Darryl Johnson	5	2	114	14	29	0.483	5	7	0.714	6	11	0.545	39	7.8	5	7	12	2.4	19	10	6	1	4
Dennis Edwards	5	0	87	17	35	0.486	4	4	1.000	0	0	0.000	38	7.6	2	4	6	1.2	8	17	7	0	2
Devin Davis	1	1	17	2	7	0.286	3	4	0.750	0	0	0.000	7	7.0	2	4	6	6.0	1	4	1	0	1
Greg Graham	5	0	104	11	39	0.282	6	8	0.750	5	11	0.455	33	6.6	1	7	8	1.6	8	10	8	1	7
Willie Murdaugh	2	0	14	1	6	0.167	0	0	0.000	0	2	0.000	2	1.0	0	0	0	0.0	1	5	1	0	3
TOTALS	5		1200	181	431	0.420	75	107	0.701	29	79	0.367	466	93.2	75	112	187	37.4	99	137	73	25	61
OPPONENTS	5		1200	202	368	0.549	97	138	0.703	10	22	0.455	511	102.2	56	156	212	42.4	115	122	103	40	40

1998-99

REGULAR SEASON RECORD: 25-31

PLAYOFF RECORD: 2-3

HEAD COACH

RUSS BERGMAN

AWARDS

DAMON JONES – CBA NEWCOMER OF THE YEAR

DAMON JONES – ALL LEAGUE FIRST TEAM

NBA CALL-UPS

CHRIS GARNER – SPURS; PHIL CARTWRIGHT – SUPERSONICS; ERNEST HALL – TRAIL BLAZERS; DAMON JONES – MAGIC, NETS, CELTICS; LAWRENCE MOTEN – KNICKS; TERRELL BELL – KINGS; MITCH HENDERSON – HAWKS; ART LONG – TRAIL BLAZERS

AMERICAN CONFERENCE

EASTERN DIVISION	HOME		AWAY	
	W	L	W	L
=====				
Connecticut Pride	37-19	25-3	12-16	
Grand Rapids Hoops	27-29	16-12	11-17	
Fort Wayne Fury	28-28	21-7	7-21	
Rockford Lightning	23-33	14-14	9-19	

NATIONAL CONFERENCE

SOUTHERN DIVISION	HOME		AWAY	
	W	L	W	L
=====				
Sioux Falls Skyforce	32-24	18-10	14-14	
Yakima Sun Kings	30-26	21-7	9-19	
Quad City Thunder	29-27	18-10	11-17	
Idaho Stampede	25-31	17-11	8-20	
La Crosse Bobcats	21-35	16-12	5-23	

1998-99 REGULAR SEASON STATISTICS

IDAHO	G	GS	MIN	FGM	FGA	Pct.	FTM	FTA	Pct.	3PM	3PA	Pct.	PTS	Avg.	OR	DR	REB	Avg.	AST	PF	TO	BS	ST
Damon Jones	35	31	1400	269	645	0.417	100	130	0.769	120	336	0.357	758	21.7	28	109	137	3.9	222	68	85	3	41
Dennis Edwards	44	28	1361	372	683	0.545	147	211	0.697	0	4	0.000	891	20.3	70	101	171	3.9	108	113	129	2	48
Dexter Boney	33	17	973	156	385	0.405	103	157	0.656	38	154	0.247	453	13.7	28	96	124	3.8	85	68	62	16	44
Lawrence Moten	26	5	618	106	248	0.427	113	137	0.825	21	55	0.382	346	13.3	23	38	61	2.3	64	52	43	8	28
Ricky Robinson	7	5	217	33	80	0.413	20	24	0.833	0	0	0.000	86	12.3	22	30	52	7.4	17	23	16	2	7
Demetrius Alexand	43	29	1049	206	390	0.528	114	145	0.786	2	8	0.250	528	12.3	102	136	238	5.5	49	102	95	33	44
Art Long	10	4	268	48	107	0.449	21	31	0.677	0	3	0.000	117	11.7	20	68	88	8.8	7	42	38	13	5
Ira Newble	31	22	838	148	267	0.554	57	85	0.671	6	25	0.240	359	11.6	48	93	141	4.5	37	74	40	16	25
Chris Garner	27	24	1032	111	326	0.340	44	59	0.746	33	103	0.320	299	11.1	23	61	84	3.1	206	83	82	4	71
Phil Cartwright	46	29	1278	198	408	0.485	93	122	0.762	0	0	0.000	489	10.6	99	221	320	7.0	72	123	76	33	27
Julius Nwosu	20	9	433	53	111	0.477	58	71	0.817	0	0	0.000	164	8.2	44	88	132	6.6	17	62	34	12	8
Brian Tolbert	5	1	119	14	33	0.424	9	11	0.818	2	10	0.200	39	7.8	1	9	10	2.0	17	9	13	0	6
Ernest Hall	24	16	629	59	139	0.424	44	61	0.721	3	18	0.167	165	6.9	12	31	43	1.8	125	42	39	0	22
Willie Murdaugh	47	13	801	104	233	0.446	42	55	0.764	58	125	0.464	308	6.6	35	83	118	2.5	57	106	48	3	42
Rafer Alston	17	5	427	45	116	0.388	13	19	0.684	8	28	0.286	111	6.5	2	31	33	1.9	106	38	50	1	20
Joe Stephens	3	0	50	8	24	0.333	3	4	0.750	0	7	0.000	19	6.3	3	5	8	2.7	5	1	1	0	3
Vincent Askew	4	0	85	8	20	0.400	8	12	0.667	0	0	0.000	24	6.0	7	17	24	6.0	9	10	4	0	4
Chuck Graham	2	0	42	5	16	0.313	0	0	0.000	1	4	0.250	11	5.5	2	3	5	2.5	5	7	1	1	3
Jerome Lane	34	32	1184	78	166	0.470	17	53	0.321	1	2	0.500	174	5.1	179	313	492	14.5	84	115	97	27	30
Lloyd Daniels	2	0	50	2	15	0.133	4	4	1.000	2	9	0.222	10	5.0	0	3	3	1.5	5	1	0	0	1
Dave Johnson	3	2	80	6	27	0.222	1	2	0.500	2	10	0.200	15	5.0	5	9	14	4.7	3	9	6	1	2
(Total)	28	22	954	125	321	0.389	70	98	0.714	23	76	0.303	343	12.3	45	80	125	4.5	62	63	48	5	25
Jermaine Smith	4	3	86	9	25	0.360	1	3	0.333	1	7	0.143	20	5.0	7	1	8	2.0	11	13	13	0	7
Al Hamilton	7	3	125	13	28	0.464	7	8	0.875	0	0	0.000	33	4.7	13	22	35	5.0	8	16	9	0	4
Charles Shacklefo	5	0	46	8	15	0.533	1	4	0.250	0	0	0.000	17	3.4	6	6	12	2.4	3	13	6	0	4
Terrell Bell	12	2	209	11	23	0.478	13	22	0.591	0	0	0.000	35	2.9	22	45	67	5.6	6	35	12	23	3
(Total)	26	6	356	22	42	0.524	18	36	0.500	0	0	0.000	62	2.4	37	84	121	4.7	10	60	23	53	4
Spud Webb	1	0	18	0	3	0.000	2	2	1.000	0	0	0.000	2	2.0	0	0	0	0.0	2	2	1	0	1
Brian Myers	7	0	32	2	6	0.333	0	0	0.000	1	3	0.333	5	0.7	1	6	7	1.0	0	6	1	0	1
Quinn Harwood	4	0	7	0	0	0.000	0	0	0.000	0	0	0.000	0	0.0	0	0	0	0.0	0	1	0	0	0
Mitch Henderson	1	0	28	0	3	0.000	0	0	0.000	0	1	0.000	0	0.0	0	1	1	1.0	2	3	5	0	1
Mark Hutton	1	0	5	0	0	0.000	0	0	0.000	0	0	0.000	0	0.0	0	0	0	0.0	0	2	0	0	1
TOTALS	56		13490	2072	4542	0.456	1035	1432	0.723	299	912	0.328	5478	97.8	802	1626	2428	43.4	1332	1239	1006	198	503
OPPONENTS	56		13490	2161	4634	0.466	928	1270	0.731	240	772	0.311	5490	98.0	777	1587	2364	42.2	1431	1275	952	280	548

1998-99 CBA PLAYOFF STATISTICS

IDAHO VS. SIOUX FALLS

March 24 - SIOUX FALLS 109, Idaho 88	(Sioux Falls leads series 1-0)
March 26 - SIOUX FALLS 105, Idaho 91	(Sioux Falls leads series 2-0)
March 28 - IDAHO 114, Sioux Falls 106	(Sioux Falls leads series 2-1)
March 30 - IDAHO 127, Sioux Falls 126	(Series tied 2-2)
April 3 - SIOUX FALLS 99, Idaho 92	(Sioux Falls wins series 3-2)

IDAHO	G	GS	MIN	FGM	FGA	Pct.	FTM	FTA	Pct.	3PM	3PA	Pct.	PTS	Avg.	OR	DR	REB	Avg.	AST	PF	TO	BS	ST
Damon Jones	5	3	193	34	97	0.351	24	29	0.828	12	47	0.255	104	20.8	3	8	11	2.2	35	8	11	0	8
Dexter Boney	5	5	202	33	83	0.398	21	35	0.600	14	39	0.359	101	20.2	12	24	36	7.2	12	12	9	3	8
Demetrius Alexand	5	5	158	41	75	0.547	17	21	0.810	0	3	0.000	99	19.8	20	24	44	8.8	12	21	16	6	3
Joe Stephens	5	0	108	23	60	0.383	4	4	1.000	7	21	0.333	57	11.4	10	16	26	5.2	5	11	4	2	2
Phil Cartwright	5	2	169	19	47	0.404	17	25	0.680	0	0	0.000	55	11.0	14	30	44	8.8	10	21	6	1	3
Ira Newble	5	5	160	17	50	0.340	11	17	0.647	0	3	0.000	45	9.0	17	23	40	8.0	8	16	6	4	2
Julius Nwosu	5	3	100	14	30	0.467	5	8	0.625	0	0	0.000	33	6.6	18	15	33	6.6	3	23	8	1	5
Ernest Hall	5	2	70	6	18	0.333	5	12	0.417	0	2	0.000	17	3.4	4	1	5	1.0	17	7	3	0	4
Terrell Bell	4	0	13	0	1	0.000	1	2	0.500	0	0	0.000	1	0.3	3	2	5	1.3	0	7	0	2	0
Willie Murdaugh	3	0	27	0	8	0.000	0	0	0.000	0	4	0.000	0	0.0	3	3	6	2.0	4	9	0	0	2
TOTALS	5		1200	187	469	0.399	105	153	0.686	33	119	0.277	512	102.4	104	146	250	50.0	106	135	63	19	37
OPPONENTS	5		1200	202	422	0.479	117	163	0.718	24	86	0.279	545	109.0	76	164	240	48.0	142	115	75	26	35

1999-00

REGULAR SEASON RECORD: 19-37
PLAYOFF RECORD: 0-1

HEAD COACH
RUSS BERGMAN (9-17)
RORY WHITE (10-20)

AWARDS
RUSTY LARUE – ALL LEAGUE SECOND TEAM

NBA CALL-UPS
BEN DAVIS – SUNS
RUSTY LARUE - BULLS

AMERICAN CONFERENCE

	HOME		AWAY	
	W	L	W	L
=====				
Rockford Lightning	30-26	19-9	11-17	
Grand Rapids Hoops	29-27	19-9	10-18	
Connecticut Pride	29-27	21-7	8-20	
Fort Wayne Fury	26-30	16-12	10-18	

NATIONAL CONFERENCE

	HOME		AWAY	
	W	L	W	L
=====				
Quad City Thunder	35-21	21-7	14-14	
Yakima Sun Kings	33-23	20-8	13-15	
Sioux Falls Skyforce	30-26	20-8	10-18	
La Crosse Bobcats	21-35	15-13	6-22	
Idaho Stampede	19-37	14-14	5-23	

1999-00 REGULAR SEASON STATISTICS

IDAHO	G	GS	MIN	FGM	FGA	Pct.	FTM	FTA	Pct.	3PM	3PA	Pct.	PTS	Avg.	OR	DR	REB	Avg.	AST	PF	TO	BS	ST
Dexter Boney	21	21	832	136	317	0.429	95	127	0.748	44	118	0.373	411	19.6	34	80	114	5.4	70	45	54	6	30
Jerald Honeycutt	36	36	1272	274	635	0.431	101	145	0.697	22	79	0.278	671	18.6	81	203	284	7.9	86	139	116	38	82
Stephen Howard	7	5	218	45	88	0.511	36	49	0.735	0	1	0.000	126	18.0	17	28	45	6.4	8	25	17	5	9
Ben Davis	34	32	1087	204	412	0.495	125	166	0.753	0	0	0.000	533	15.7	96	156	252	7.4	48	144	74	32	18
Ira Newble	53	51	2026	330	622	0.531	133	174	0.764	25	67	0.373	818	15.4	121	248	369	7.0	149	173	99	45	98
Rusty LaRue	38	32	1376	195	461	0.423	118	130	0.908	48	141	0.340	556	14.6	21	104	125	3.3	318	111	111	14	51
Carlos Strong	26	19	727	139	289	0.481	75	99	0.758	0	1	0.000	353	13.6	47	114	161	6.2	42	112	52	7	10
David Booth	12	10	278	55	114	0.482	40	52	0.769	5	14	0.357	155	12.9	16	49	65	5.4	18	22	16	6	13
Rick Hughes	21	6	474	117	226	0.518	32	43	0.744	0	1	0.000	266	12.7	60	83	143	6.8	18	57	22	25	20
Julius Nwosu	17	12	456	61	134	0.455	50	68	0.735	0	1	0.000	172	10.1	39	97	136	8.0	14	57	37	18	13
Darren McLinton	38	20	995	134	293	0.457	69	80	0.863	34	97	0.351	371	9.8	15	38	53	1.4	191	49	69	1	30
Jermaine Walker	28	6	574	89	232	0.384	42	62	0.677	25	59	0.424	245	8.8	23	91	114	4.1	40	47	32	14	22
Jesse Pate	18	8	473	72	172	0.419	13	22	0.591	0	1	0.000	157	8.7	15	63	78	4.3	43	56	25	8	19
Roberto Bergersen	51	12	953	153	346	0.442	58	82	0.707	30	87	0.345	394	7.7	32	59	91	1.8	104	109	85	16	30
Joe Stephens	13	4	298	36	126	0.286	16	24	0.667	4	23	0.174	92	7.1	25	21	46	3.5	20	19	19	4	10
DeJuan Wheat	12	3	206	25	63	0.397	8	16	0.500	6	17	0.353	64	5.3	3	14	17	1.4	43	15	11	0	10
Alaa Abdelnaby	6	0	98	13	34	0.382	3	4	0.750	0	0	0.000	29	4.8	5	17	22	3.7	1	22	14	1	1
James Martin	14	2	349	25	49	0.510	12	21	0.571	1	5	0.200	63	4.5	29	40	69	4.9	41	60	29	8	22
(Total)	35	2	876	71	145	0.490	30	70	0.429	1	8	0.125	173	4.9	83	123	206	5.9	83	133	67	13	48
Manny Dies	42	0	488	57	118	0.483	28	37	0.757	0	3	0.000	142	3.4	30	60	90	2.1	22	86	24	29	12
Reggie Geary	16	0	206	16	39	0.410	7	14	0.500	1	6	0.167	40	2.5	10	12	22	1.4	47	35	17	5	11
James Head	7	0	49	4	12	0.333	2	5	0.400	0	1	0.000	10	1.4	2	9	11	1.6	2	8	0	2	0
Jerome Lane	3	0	55	1	3	0.333	2	5	0.400	0	0	0.000	4	1.3	9	10	19	6.3	7	9	6	2	3
TOTALS	56		13490	2181	4785	0.456	1065	1425	0.747	245	722	0.339	5672	101.3	730	1596	2326	41.5	1332	1400	929	286	514
OPPONENTS	56		13490	2288	4716	0.485	1134	1535	0.739	179	534	0.335	5889	105.2	789	1826	2615	46.7	1392	1327	1009	337	516

1999-00 CBA PLAYOFF STATISTICS

PLAY-IN GAME

MONDAY, MARCH 27

LaCrosse 107, Idaho 94

IDAHO	G	GS	MIN	FGM	FGA	Pct.	FTM	FTA	Pct.	3PM	3PA	Pct.	PTS	Avg.	OR	DR	REB	Avg.	AST	PF	TO	BS	ST
Rick Hughes	1	0	25	7	13	0.538	5	5	1.000	0	0	0.000	19	19.0	6	2	8	8.0	0	5	0	1	0
Jerald Honeycutt	1	1	43	7	22	0.318	4	7	0.571	0	1	0.000	18	18.0	2	14	16	16.0	4	3	1	0	1
Ira Newble	1	1	35	7	11	0.636	1	2	0.500	1	2	0.500	16	16.0	1	4	5	5.0	2	6	1	2	4
Stephen Howard	1	1	24	5	9	0.556	1	3	0.333	1	1	1.000	12	12.0	1	3	4	4.0	1	5	1	0	1
Roberto Bergersen	1	1	29	4	10	0.400	1	2	0.500	2	4	0.500	11	11.0	0	0	0	0.0	1	0	2	0	1
Darren McLinton	1	1	43	4	14	0.286	0	0	0.000	1	6	0.167	9	9.0	1	2	3	3.0	5	1	2	0	2
Rusty LaRue	1	0	28	3	13	0.231	0	0	0.000	1	4	0.250	7	7.0	2	2	4	4.0	3	5	4	0	0
James Martin	1	0	13	1	2	0.500	0	0	0.000	0	1	0.000	2	2.0	0	1	1	1.0	3	3	1	0	0
TOTALS	1		240	38	94	0.404	12	19	0.632	6	19	0.316	94	94.0	13	28	41	41.0	19	28	12	3	9
OPPONENTS	1		240	43	84	0.512	21	28	0.750	0	3	0.000	107	107.0	13	41	54	54.0	25	21	16	8	7

2000-01 (SHORTENED SEASON)

REGULAR SEASON RECORD: 17-7

PLAYOFF RECORD: N/A

HEAD COACH

RORY WHITE

AMERICAN CONFERENCE

	HOME		AWAY	
	W	L	W	L
Connecticut Pride	16-9	10-2	6-7	
Grand Rapids Hoops	15-10	7-5	8-5	
Fort Wayne Fury	11-9	7-1	4-8	
Rockford Lightning	12-13	10-5	2-8	
Gary Steelheads	9-15	4-9	5-6	

NATIONAL CONFERENCE

	HOME		AWAY	
	W	L	W	L
Idaho Stampede	17-7	12-1	5-6	
Yakima Sun Kings	12-12	10-4	2-8	
Quad City Thunder	8-13	5-4	3-9	
La Crosse Bobcats	9-14	6-5	3-9	
Sioux Falls Skyforce	8-15	5-5	3-10	

2000-01 REGULAR SEASON STATISTICS

IDAHO	G	GS	MIN	FGM	FGA	Pct.	FTM	FTA	Pct.	3PM	3PA	Pct.	PTS	Avg.	OR	DR	REB	Avg.	AST	PF	TO	BS	ST
Joe Courtney	13	12	471	93	211	0.441	60	77	0.779	0	4	0.000	246	18.9	42	71	113	8.7	25	50	35	14	13
(Total)	49	42	1636	332	692	0.480	187	233	0.803	1	9	0.111	852	17.4	88	226	314	6.4	64	161	136	37	29
Greg Sutton	7	6	252	44	93	0.473	20	26	0.769	22	46	0.478	130	18.6	1	19	20	2.9	40	28	19	0	15
(Total)	26	24	787	133	281	0.473	67	82	0.817	56	131	0.427	389	15.0	6	57	63	2.4	134	86	68	4	32
Lloyd Daniels	32	28	1208	205	505	0.406	84	101	0.832	83	217	0.382	577	18.0	44	109	153	4.8	141	63	94	24	43
Tim Breaux	20	17	738	120	289	0.415	51	83	0.614	33	82	0.402	324	16.2	22	37	59	3.0	63	44	33	7	21
Lawrence Moten	5	2	136	25	58	0.431	19	21	0.905	4	15	0.267	73	14.6	10	7	17	3.4	12	11	6	1	3
(Total)	14	2	304	55	139	0.396	29	33	0.879	10	35	0.286	149	10.6	20	13	33	2.4	21	25	20	3	12
Ashraf Amaya	34	27	1112	170	341	0.499	128	180	0.711	1	4	0.250	469	13.8	107	208	315	9.3	50	134	90	32	30
Devin Davis	46	35	1317	217	502	0.432	190	256	0.742	0	4	0.000	624	13.6	160	291	451	9.8	86	183	122	16	41
Dennis Edwards	44	8	933	262	459	0.571	60	111	0.541	0	4	0.000	584	13.3	56	65	121	2.8	73	80	65	2	31
Donald Royal	9	6	237	32	87	0.368	42	48	0.875	0	0	0.000	106	11.8	6	20	26	2.9	16	13	17	1	10
Darryl Johnson	18	15	617	86	164	0.524	8	12	0.667	25	57	0.439	205	11.4	9	26	35	1.9	75	55	33	2	21
Nate Huffman	56	38	1408	255	461	0.553	117	146	0.801	1	4	0.250	628	11.2	141	287	428	7.6	56	190	96	100	58
Rusty LaRue	1	1	35	4	12	0.333	2	2	1.000	1	4	0.250	11	11.0	0	2	2	2.0	7	3	1	0	2
Ernest Hall	47	45	1665	185	412	0.449	124	164	0.756	18	61	0.295	512	10.9	41	87	128	2.7	350	143	91	2	67
Greg Graham	15	2	387	48	127	0.378	35	45	0.778	7	36	0.194	138	9.2	6	18	24	1.6	48	35	33	1	32
Nate Erdmann	39	19	971	128	283	0.452	47	65	0.723	44	116	0.379	347	8.9	24	68	92	2.4	81	126	65	9	29
Erik Martin	10	9	237	33	67	0.493	16	30	0.533	0	0	0.000	82	8.2	23	24	47	4.7	32	27	18	10	4
Ira Newble	16	1	260	50	87	0.575	20	29	0.690	3	6	0.500	123	7.7	28	38	66	4.1	10	40	10	8	14
Jared Prickett	34	1	650	86	186	0.462	44	76	0.579	1	6	0.167	217	6.4	62	94	156	4.6	38	70	47	14	11
Larry Krystowiak	4	0	71	10	20	0.500	4	4	1.000	0	1	0.000	24	6.0	11	12	23	5.8	8	10	5	1	2
Joe Wyatt	38	5	635	79	195	0.405	23	35	0.657	19	67	0.284	200	5.3	15	71	86	2.3	87	95	46	3	25
Willie Murdaugh	6	1	78	3	11	0.273	9	10	0.900	0	6	0.000	15	2.5	8	10	18	3.0	10	14	5	0	6
Ochiel Swaby	5	2	56	4	12	0.333	4	8	0.500	0	0	0.000	12	2.4	3	5	8	1.6	2	10	7	3	2
Deryl Cunningham	1	0	16	0	0	0.000	1	2	0.500	0	0	0.000	1	1.0	0	1	1	1.0	2	1	1	0	1
TOTALS	56		13490	2139	4582	0.467	1108	1531	0.724	262	740	0.354	5648	100.9	819	1570	2389	42.7	1312	1425	939	250	481
OPPONENTS	56		13490	2146	4480	0.479	1137	1558	0.730	228	659	0.346	5657	101.0	704	1547	2251	40.2	1164	1326	947	276	462



Stampede fans loved the move to downtown Boise, then known as the Bank of America Centre, until the CBA folded midway through the season.

2002-03

REGULAR SEASON RECORD: 17-31
PLAYOFF RECORD: N/A

HEAD COACH
RORY WHITE

AWARDS

BYRON MOUTON – ALL ROOKIE FIRST TEAM
MICHAEL JOHNSON – ALL DEFENSIVE FIRST TEAM

NBA CALL-UPS

AMERICAN CONFERENCE

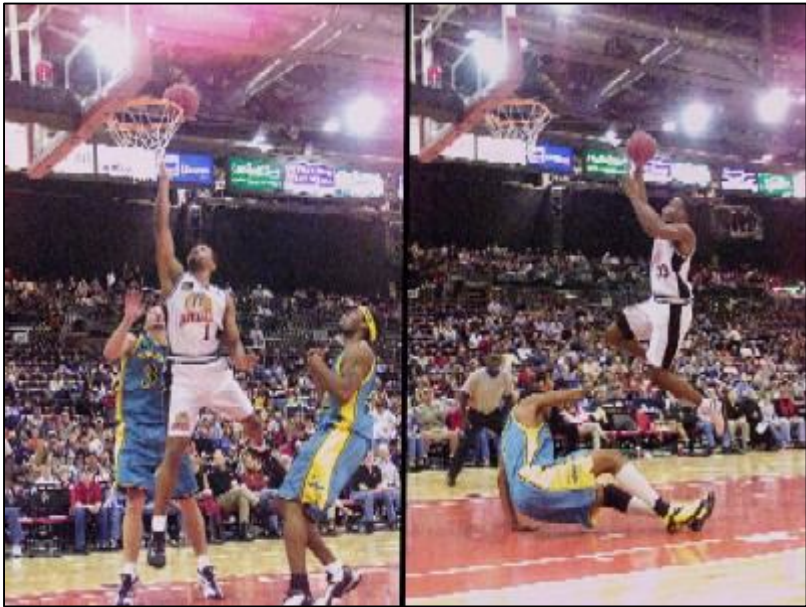
	HOME		AWAY	
	W	L	W	L
=====				
Rockford Lightning	32-16	18-6	14-10	
Grand Rapids Hoops	23-25	14-10	9-15	
Gary Steelheads	25-23	15-9	10-14	
Great Lakes Storm	19-29	8-16	11-13	

NATIONAL CONFERENCE

	HOME		AWAY	
	W	L	W	L
=====				
Dakota Wizards	31-17	20-4	11-13	
Yakima Sun Kings	28-20	19-5	9-15	
Idaho Stampede	17-31	11-13	6-18	
Sioux Falls Skyforce	17-31	14-10	3-21	

2002-03 REGULAR SEASON STATISTICS

IDAHO	G	GS	MIN	FGM	FGA	Pct.	FTM	FTA	Pct.	3PM	3PA	Pct.	PTS	Avg.	OR	DR	REB	Avg.	AST	PF	TO	BS	ST
Brian Green	46	29	1349	323	724	0.446	133	160	0.831	84	218	0.385	863	18.8	60	164	224	4.9	104	156	101	13	79
Michael Johnson	36	10	977	200	450	0.444	216	246	0.878	35	89	0.393	651	18.1	45	83	128	3.6	178	130	83	6	62
George Reese	14	9	450	109	194	0.562	19	24	0.792	6	16	0.375	243	17.4	27	56	83	5.9	24	58	28	8	15
(Total)	29	17	797	172	340	0.506	38	56	0.679	6	20	0.300	388	13.4	41	105	146	5.0	45	104	51	14	24
Ruben Nembhard	15	13	462	90	194	0.464	38	64	0.594	4	14	0.286	222	14.8	21	40	61	4.1	84	30	35	2	28
Sharif Fajardo	21	16	560	91	204	0.446	108	128	0.844	11	23	0.478	301	14.3	39	74	113	5.4	32	89	81	13	13
Michael Smith	19	13	559	92	229	0.402	56	72	0.778	10	41	0.244	250	13.2	32	100	132	6.9	35	41	45	17	17
Chris Garner	48	36	1679	221	538	0.411	105	139	0.755	49	147	0.333	596	12.4	51	124	175	3.6	341	141	110	4	103
Antonio Harvey	29	25	919	136	300	0.453	70	102	0.686	1	2	0.500	343	11.8	54	184	238	8.2	76	82	90	70	19
Danny Johnson	23	13	623	105	249	0.422	46	54	0.852	9	39	0.231	265	11.5	3	43	46	2.0	34	44	21	14	22
Byron Mouton	47	10	1200	182	340	0.535	152	192	0.792	3	16	0.188	519	11.0	115	94	209	4.4	53	148	70	10	36
John Coker	24	18	666	100	203	0.493	34	48	0.708	0	0	0.000	234	9.8	56	116	172	7.2	19	69	23	31	5
Gary Williams	14	4	269	41	94	0.436	17	21	0.810	5	17	0.294	104	7.4	21	18	39	2.8	19	45	21	2	8
Chris Burgess	7	6	167	22	55	0.400	7	11	0.636	0	0	0.000	51	7.3	9	30	39	5.6	12	14	16	4	2
Chianti Roberts	48	38	1240	120	183	0.656	30	71	0.423	0	4	0.000	270	5.6	102	173	275	5.7	104	165	77	17	56
Brian Taylor	4	0	63	7	31	0.226	4	6	0.667	2	8	0.250	20	5.0	1	5	6	1.5	10	5	4	0	3
Adrian Peterson	15	0	219	25	69	0.362	11	15	0.733	6	19	0.316	67	4.5	9	20	29	1.9	24	15	6	1	7
Justus Thigpen	4	0	45	3	10	0.300	6	7	0.857	0	1	0.000	12	3.0	1	5	6	1.5	7	3	3	0	3
Nick Davis	6	0	93	5	16	0.313	1	2	0.500	0	0	0.000	11	1.8	8	25	33	5.5	2	12	9	3	1
Darius Beard	5	0	25	2	6	0.333	3	4	0.750	0	0	0.000	7	1.4	4	6	10	2.0	1	6	3	2	0
Tim Gill	1	0	8	0	2	0.000	0	0	0.000	0	1	0.000	0	0.0	1	1	2	2.0	2	4	2	0	0
TOTALS	48		11595	1878	4101	0.458	1062	1373	0.773	225	656	0.343	5043	105.1	661	1362	2023	42.1	1165	1259	829	217	482
OPPONENTS	48		11595	1934	3968	0.487	1087	1417	0.767	288	711	0.405	5243	109.2	625	1504	2129	44.4	1275	1202	882	173	414



2003-04

REGULAR SEASON RECORD: 34-14

PLAYOFF RECORD: 3-2

HEAD COACH

LARRY KRYSTKOWIAK

AWARDS

JOSH DAVIS – MOST VALUABLE PLAYER

JOSH DAVIS – NEWCOMER OF THE YEAR

JOSH DAVIS – ALL LEAGUE FIRST TEAM

DESEAN HADLEY – DEFENSIVE PLAYER OF THE YEAR

DESEAN HADLEY – ALL LEAGUE SECOND TEAM

DESEAN HADLEY – ALL DEFENSIVE FIRST TEAM

DAVID BAILEY – ROOKIE OF THE YEAR

RANDY LIVINGSTON – ALL LEAGUE SECOND TEAM

NBA CALL-UPS

JOSH DAVIS – HAWKS

RANDY LIVINGSTON - CLIPPERS

CBA STANDINGS

	HOME		AWAY	
	W	L	W	L
=====				
Dakota Wizards	34-14	21-3	13-11	
Idaho Stampede	34-14	21-3	13-11	
Gary Steelheads	27-21	16-8	11-13	
Rockford Lightning	25-23	17-7	8-16	
Sioux Falls Skyforce	23-25	14-10	9-15	
Great Lakes Storm	15-33	11-13	4-20	
Yakima Sun Kings	10-38	7-17	3-21	

2003-04 REGULAR SEASON STATISTICS

IDAHO	G	GS	MIN	FGM	FGA	Pct.	FTM	FTA	Pct.	3PM	3PA	Pct.	PTS	Avg.	OR	DR	REB	Avg.	AST	PF	TO	BS	ST
Jerald Honeycutt	8	7	334	78	147	0.531	48	65	0.738	7	23	0.304	211	26.4	24	48	72	9.0	40	36	35	8	19
Smush Parker	9	9	353	61	112	0.545	55	77	0.714	12	35	0.343	189	21.0	9	32	41	4.6	44	30	36	2	17
Josh Davis	40	39	1340	299	507	0.590	89	108	0.824	60	146	0.411	747	18.7	107	278	385	9.6	96	156	88	28	58
DeSean Hadley	47	45	1824	277	641	0.432	200	241	0.830	80	193	0.415	834	17.7	65	222	287	6.1	199	150	116	14	68
Roberto Bergersen	48	46	1594	285	603	0.473	89	101	0.881	109	247	0.441	768	16.0	32	91	123	2.6	145	139	120	10	61
Paul McPherson	32	6	748	203	307	0.661	69	99	0.697	2	11	0.182	477	14.9	37	56	93	2.9	42	109	54	8	50
(Total)	40	13	967	251	400	0.628	93	136	0.684	4	14	0.286	599	15.0	55	81	136	3.4	63	144	75	13	65
Casey Calvary	27	26	727	156	268	0.582	61	78	0.782	7	10	0.700	380	14.1	49	114	163	6.0	23	110	43	23	16
David Bailey	48	8	1383	225	419	0.537	145	182	0.797	22	76	0.289	617	12.9	53	135	188	3.9	358	145	157	1	70
Randy Livingston	32	30	1185	139	367	0.379	96	109	0.881	36	114	0.316	410	12.8	27	120	147	4.6	303	101	125	10	63
Eric Murdock	7	1	178	28	62	0.452	11	13	0.846	5	17	0.294	72	10.3	3	10	13	1.9	24	10	14	0	4
Dan Langhi	7	2	168	26	60	0.433	14	17	0.824	2	5	0.400	68	9.7	8	23	31	4.4	7	15	10	1	3
Noel Felix	37	1	611	123	204	0.603	81	97	0.835	0	0	0.000	327	8.8	59	82	141	3.8	25	119	39	42	13
Kyle Keyes	1	0	17	3	9	0.333	2	2	1.000	0	1	0.000	8	8.0	0	0	0	0.0	5	3	3	0	1
Lari Ketner	5	5	85	18	26	0.692	3	7	0.429	0	0	0.000	39	7.8	4	10	14	2.8	2	13	9	0	2
Mario Woodson	39	12	736	78	120	0.650	58	88	0.659	0	0	0.000	214	5.5	76	119	195	5.0	35	102	47	20	14
Stephen Moss-Kelle	12	3	191	29	67	0.433	5	10	0.500	2	12	0.167	65	5.4	14	37	51	4.3	10	34	5	3	4
(Total)	21	5	299	46	106	0.434	9	17	0.529	4	19	0.211	105	5.0	21	49	70	3.3	15	56	10	3	5
Brooks Hall	11	0	121	16	46	0.348	3	7	0.429	10	27	0.370	45	4.1	5	9	14	1.3	5	21	4	1	3
John Smith	3	0	25	5	6	0.833	0	1	0.000	0	0	0.000	10	3.3	0	3	3	1.0	0	8	0	0	2
TOTALS	48		11620	2049	3971	0.516	1029	1302	0.790	354	917	0.386	5481	114.2	572	1389	1961	40.9	1363	1301	905	171	468
OPPONENTS	48		11620	1948	3950	0.493	1081	1461	0.740	283	765	0.370	5260	109.6	585	1280	1865	38.9	1102	1219	895	138	470

2003-04 CBA PLAYOFF STATISTICS

BEST-OF-FIVE SEMI-FINAL SERIES

Gary 98 at Idaho 107

(Idaho leads series 1-0)

Gary 90 at Idaho 98

(Idaho leads series 2-0)

Idaho 97 at Gary 100

(Idaho leads series 2-1)

Idaho 111 at Garv 108

(Idaho wins series 3-1)

ONE-GAME CHAMPIONSHIP

Idaho 129 at Dakota 132 (Dakota wins series 1-0)

IDAHO	G	GS	MIN	FGM	FGA	Pct.	FTM	FTA	Pct.	3PM	3PA	Pct.	PTS	Avg.	OR	DR	REB	Avg.	AST	PF	TO	BS	ST
Josh Davis	1	1	42	10	16	0.625	4	4	1.000	3	7	0.429	27	27.0	0	4	4	4.0	3	2	2	1	2
Randy Livingston	5	5	185	28	56	0.500	28	33	0.848	5	18	0.278	89	17.8	2	31	33	6.6	34	16	17	2	4
Paul McPherson	5	1	136	37	52	0.712	15	20	0.750	0	1	0.000	89	17.8	6	11	17	3.4	9	19	19	0	6
Casey Calvary	5	5	181	32	66	0.485	15	23	0.652	0	3	0.000	79	15.8	13	38	51	10.2	12	24	16	7	4
David Bailey	5	0	141	30	50	0.600	13	20	0.650	2	6	0.333	75	15.0	7	8	15	3.0	24	28	11	1	9
DeSean Hadley	5	5	181	22	52	0.423	14	20	0.700	5	15	0.333	63	12.6	5	21	26	5.2	15	16	16	0	6
Roberto Bergersen	5	5	152	21	53	0.396	7	9	0.778	7	16	0.438	56	11.2	1	16	17	3.4	6	16	9	4	5
Noel Felix	5	0	106	18	37	0.486	12	12	1.000	0	0	0.000	48	9.6	7	19	26	5.2	0	20	10	8	9
Jamaal Davis	3	0	20	4	11	0.364	0	0	0.000	0	1	0.000	8	2.7	3	0	3	1.0	1	3	2	1	0
Mario Woodson	3	3	56	3	9	0.333	2	2	1.000	0	0	0.000	8	2.7	3	12	15	5.0	1	6	4	1	1
TOTALS	5		1200	205	402	0.510	110	143	0.769	22	67	0.328	542	108.4	47	160	207	41.4	105	150	106	25	46
OPPONENTS	5		1200	191	405	0.472	129	175	0.737	17	50	0.340	528	105.6	54	135	189	37.8	126	142	93	12	52

2004-05

REGULAR SEASON RECORD: 23-25

PLAYOFF RECORD: N/A

HEAD COACH

JOE WOLF

AWARDS

SAM CLANCY – LEAGUE MVP

SAM CLANCY – LEAGUE DEFENSIVE PLAYER OF THE YEAR

SAM CLANCY – ALL-LEAGUE FIRST TEAM

NBA CALL-UPS

BRITTON JOHNSON – PACERS

KANIEL DICKENS - NETS

EASTERN CONFERENCE

	HOME		AWAY	
	W	L	W	L
Great Lakes Storm	28-20	17-7	11-13	
Rockford Lightning	26-22	18-6	8-16	
Michigan Mayhem	18-30	12-12	6-18	
Gary Steelheads	17-31	13-11	4-20	

WESTERN CONFERENCE

	HOME		AWAY	
	W	L	W	L
Dakota Wizards	32-16	18-6	14-10	
Sioux Falls Skyforce	31-17	19-5	12-12	
Idaho Stampede	23-25	16-8	7-17	
Yakima Sun Kings	17-31	10-14	7-17	

2004-05 REGULAR SEASON STATISTICS

IDAHO	G	GS	MIN	FGM	FGA	Pct.	FTM	FTA	Pct.	3PM	3PA	Pct.	PTS	Avg.	OR	DR	REB	Avg.	AST	PF	TO	BS	ST
Sam Clancy	48	46	1809	324	628	0.516	270	370	0.730	0	1	0.000	918	19.1	160	360	520	10.8	79	150	107	105	60
Kaniel Dickens	25	24	858	160	336	0.476	94	116	0.810	56	152	0.368	470	18.8	47	133	180	7.2	35	86	58	18	21
Britton Johnsen	40	37	1288	262	532	0.492	162	201	0.806	42	127	0.331	728	18.2	44	193	237	5.9	104	143	97	20	46
Donald Williams	48	46	1536	310	649	0.478	93	118	0.788	79	180	0.439	792	16.5	28	84	112	2.3	160	92	63	4	30
Awvee Storey	7	4	212	34	74	0.459	16	24	0.667	13	25	0.520	97	13.9	13	21	34	4.9	19	19	20	10	4
Taliek Brown	42	37	1227	191	395	0.484	89	145	0.614	2	11	0.182	473	11.3	38	96	134	3.2	304	92	107	1	48
Patrick Okafor	16	2	348	55	90	0.611	54	70	0.771	0	0	0.000	164	10.3	45	58	103	6.4	10	51	23	2	5
(Total)	41	12	910	145	255	0.569	156	204	0.765	0	0	0.000	446	10.9	107	156	263	6.4	20	124	68	6	15
Jayson Williams	7	6	178	30	63	0.476	11	16	0.688	0	1	0.000	71	10.1	24	50	74	10.6	14	33	16	6	9
Alhaji Mohammed	48	9	1002	174	343	0.507	113	163	0.693	5	31	0.161	466	9.7	40	67	107	2.2	106	97	92	13	61
Bryan Christiansen	26	5	544	77	179	0.430	34	37	0.919	29	74	0.392	217	8.3	17	73	90	3.5	36	66	20	4	20
Tommy Adams	19	4	378	51	123	0.415	26	28	0.929	30	79	0.380	158	8.3	10	31	41	2.2	32	31	20	0	17
(Total)	39	7	857	128	296	0.432	63	71	0.887	59	156	0.378	378	9.7	20	67	87	2.2	93	57	56	1	30
Louis White	44	9	926	90	192	0.469	129	159	0.811	5	26	0.192	314	7.1	44	104	148	3.4	159	122	87	9	52
Scott Burrell	14	0	300	38	87	0.437	15	17	0.882	6	27	0.222	97	6.9	10	45	55	3.9	23	32	12	10	18
Eric Washington	5	0	102	14	31	0.452	3	3	1.000	2	8	0.250	33	6.6	7	20	27	5.4	3	15	6	1	1
Eric Williams	38	12	611	95	183	0.519	31	45	0.689	0	2	0.000	221	5.8	66	112	178	4.7	17	108	49	8	11
Julius Page	6	0	97	14	36	0.389	1	2	0.500	4	15	0.267	33	5.5	0	7	7	1.2	11	11	10	0	2
Tyree Jones	9	0	154	18	52	0.346	1	3	0.333	10	30	0.333	47	5.2	6	10	16	1.8	32	20	8	0	9
TOTALS	48		11570	1937	3993	0.485	1142	1517	0.753	283	789	0.359	5299	110.4	599	1464	2063	43.0	1144	1168	795	211	414
OPPONENTS	48		11570	2020	4216	0.479	1039	1364	0.762	237	666	0.356	5316	110.8	685	1482	2167	45.1	1124	1231	754	187	413



2005-06

REGULAR SEASON RECORD: 25-23

PLAYOFF RECORD: 1-2

HEAD COACH

JOE WOLF

AWARDS

ERIC CHENOWITH – ALL LEAGUE SECOND TEAM

NBA CALL-UPS

JOSH DAVIS – BUCKS, ROCKETS, SUNS

RANDY LIVINGSTON - BULLS

EASTERN CONFERENCE

	HOME		AWAY	
	W	L	W	L
=====				
Gary Steelheads	29-19	19-5	10-14	
Rockford Lightning	30-18	18-6	12-12	
Albany Patroons	20-28	13-11	7-17	
Michigan Mayhem	8-40	7-17	1-23	

WESTERN CONFERENCE

	HOME		AWAY	
	W	L	W	L
=====				
Yakama Sun Kings	31-17	16-8	15-9	
Sioux Falls Skyforce	30-18	21-3	9-15	
Idaho Stampede	25-23	17-7	8-16	
Dakota Wizards	19-29	16-8	3-21	

2005-06 REGULAR SEASON STATISTICS

IDAHO	G	GS	MIN	FGM	FGA	Pct.	FTM	FTA	Pct.	3PM	3PA	Pct.	PTS	Avg.	OR	DR	REB	Avg.	AST	PF	TO	BS	ST
David Jackson	40	39	1463	302	702	0.430	118	129	0.915	116	250	0.464	838	21.0	24	108	132	3.3	192	78	140	5	53
Josh Davis	14	13	465	105	212	0.495	50	55	0.909	32	77	0.416	292	20.9	39	86	125	8.9	34	34	30	4	21
Matt Freije	28	25	993	194	400	0.485	113	157	0.720	45	113	0.398	546	19.5	52	123	175	6.3	40	65	35	15	19
Alpha Bangura	4	0	123	23	48	0.479	24	33	0.727	2	3	0.667	72	18.0	6	11	17	4.3	16	10	8	1	1
(Total)	17	10	672	174	325	0.535	109	146	0.747	6	20	0.300	463	27.2	30	76	106	6.2	43	54	63	1	25
Jermaine Boyette	25	24	782	140	267	0.524	134	178	0.753	14	43	0.326	428	17.1	42	82	124	5.0	136	66	60	1	51
Randy Livingston	13	13	508	68	166	0.410	52	66	0.788	13	60	0.217	201	15.5	12	60	72	5.5	165	34	44	3	31
Eric Chenowith	47	46	1632	218	474	0.460	125	175	0.714	4	11	0.364	565	12.0	141	454	595	12.7	71	188	114	49	22
Eric Williams	24	7	574	123	219	0.562	41	53	0.774	0	1	0.000	287	12.0	57	109	166	6.9	29	64	41	5	12
(Total)	38	20	861	169	324	0.522	55	72	0.764	0	1	0.000	393	10.3	83	149	232	6.1	38	107	59	12	27
Desmond Ferguson	6	2	167	26	67	0.388	5	9	0.556	14	39	0.359	71	11.8	0	8	8	1.3	6	8	5	1	2
Jermaine Blackburn	47	13	1252	194	370	0.524	68	82	0.829	13	37	0.351	469	10.0	85	129	214	4.6	132	107	75	13	38
Eric Washington	45	13	998	168	349	0.481	61	78	0.782	41	117	0.350	438	9.7	56	90	146	3.2	64	94	48	16	47
Nate Johnson	9	0	161	31	61	0.508	7	10	0.700	8	19	0.421	77	8.6	1	17	18	2.0	12	24	12	0	3
Ricardo Sanchez	47	30	1099	137	322	0.425	46	60	0.767	54	137	0.394	374	8.0	45	125	170	3.6	68	154	73	34	28
Eddy Barlow	47	10	964	105	262	0.401	61	82	0.744	22	71	0.310	293	6.2	11	74	85	1.8	199	85	100	4	45
Jefferson Sobral	6	0	98	11	22	0.500	3	4	0.750	3	5	0.600	28	4.7	9	10	19	3.2	6	12	7	1	4
Greg Clausen	20	0	268	29	46	0.630	8	17	0.471	0	0	0.000	66	3.3	24	55	79	4.0	10	39	12	1	7
Nick VanderLaan	3	0	23	3	7	0.429	0	0	0.000	0	0	0.000	6	2.0	7	3	10	3.3	1	2	4	0	1
TOTALS	48		11570	1877	3994	0.470	916	1188	0.771	381	983	0.388	5051	105.2	611	1544	2155	44.9	1181	1064	808	153	385
OPPONENTS	48		11570	1898	4099	0.463	905	1194	0.758	253	747	0.339	4954	103.2	626	1471	2097	43.7	1056	1052	715	199	426

2005-06 CBA PLAYOFF STATISTICS

MARCH 16 Idaho 105 ROCKFORD 108
MARCH 18 Idaho 104 ALBANY 108
MARCH 21 IDAHO 100 Gary 90

IDAHO	G	GS	MIN	FGM	FGA	Pct.	FTM	FTA	Pct.	3PM	3PA	Pct.	PTS	Avg.	OR	DR	REB	Avg.	AST	PF	TO	BS	ST
Matt Freije	3	3	108	19	47	0.404	16	21	0.762	7	21	0.333	61	20.3	6	12	18	6.0	5	8	3	2	3
Randy Livingston	2	2	85	15	29	0.517	4	4	1.000	2	8	0.250	36	18.0	0	6	6	3.0	15	9	11	0	9
Josh Davis	3	1	98	21	53	0.396	7	9	0.778	2	18	0.111	51	17.0	8	19	27	9.0	4	16	6	2	3
Eric Chenowith	3	3	89	14	24	0.583	6	8	0.750	1	3	0.333	35	11.7	4	11	15	5.0	2	10	6	3	2
Jermaine Blackburn	3	3	106	14	24	0.583	1	2	0.500	0	6	0.000	29	9.7	4	13	17	5.7	9	10	10	0	4
Ricardo Sanchez	3	0	54	10	16	0.625	2	2	1.000	7	11	0.636	29	9.7	2	8	10	3.3	4	4	2	2	2
Eric Washington	3	3	63	11	27	0.407	2	2	1.000	1	10	0.100	25	8.3	3	7	10	3.3	4	4	2	0	0
Eric Williams	3	0	41	9	16	0.563	1	2	0.500	0	0	0.000	19	6.3	8	9	17	5.7	1	7	1	1	1
Eddy Barlow	3	0	64	5	15	0.333	7	10	0.700	1	3	0.333	18	6.0	0	8	8	2.7	16	5	4	1	1
Greg Clausen	1	0	12	3	5	0.600	0	0	0.000	0	0	0.000	6	6.0	1	4	5	5.0	0	1	1	1	0
TOTALS	3		720	121	256	0.473	46	60	0.767	21	80	0.263	309	103.0	36	97	133	44.3	60	74	46	12	25
OPPONENTS	3		720	107	246	0.435	77	102	0.755	15	56	0.268	306	102.0	37	88	125	41.7	40	56	39	8	20

2006-07

REGULAR SEASON RECORD: 33-17

PLAYOFF RECORD: 0-1

HEAD COACH

BRYAN GATES

AWARDS

BRYAN GATES – D-LEAGUE COACH OF THE YEAR

RANDY LIVINGSTON – D-LEAGUE MVP

NBA CALL-UPS

RANDY LIVINGSTON - SUPERSONICS

LUKE JACKSON (TWICE) – CLIPPERS, RAPTORS

NBA Development League Standings

EASTERN DIVISION	HOME		AWAY		Pct	Gb	Last 5	Streak
	W	L	W	L				
Dakota Wizards	33-17	19-6	14-11	0.660	---	4-1	WON 3	
Sioux Falls Skyforce	30-20	17-8	13-12	0.600	3.0	2-3	LOST 1	
Fort Worth Flyers	29-21	18-7	11-14	0.580	4.0	3-2	WON 1	
Tulsa 66ers	21-29	12-13	9-16	0.420	12.0	2-3	LOST 1	
Austin Toros	21-29	11-14	10-15	0.420	12.0	1-4	LOST 4	
Arkansas RimRockers	16-34	11-14	5-20	0.320	17.0	3-2	LOST 1	

WESTERN DIVISION	HOME		AWAY		Pct	Gb	Last 5	Streak
	W	L	W	L				
=====								
Idaho Stampede	33-17	16-9	17-8	0.660	---		4-1	WON 3
Colorado 14ers	28-22	16-9	12-13	0.560	5.0		1-4	LOST 3
Albuquerque Thunderbirds	24-26	14-11	10-15	0.480	9.0		3-2	WON 3
Los Angeles D-Fenders	23-27	13-12	10-15	0.460	10.0		2-3	LOST 1
Anaheim Arsenal	23-27	11-14	12-13	0.460	10.0		3-2	LOST 1
Bakersfield Jam	19-31	12-13	7-18	0.380	14.0		3-2	WON 1

2006-07 REGULAR SEASON STATISTICS

IDAHO	G	GS	MIN	FGM	FGA	Pct.	3PM	3PA	Pct.	FTM	FTA	Pct.	OR	DR	REB	Avg.	AST	PF	TO	BS	ST	PTS	Avg.
C.J. Miles	8	0	253	51	100	0.510	19	45	0.422	17	22	0.773	15	28	43	5.4	14	21	15	4	10	138	17.3
Eddie Robinson	27	21	917	184	356	0.517	1	8	0.125	51	62	0.823	30	66	96	3.6	62	63	28	16	38	420	15.6
David Jackson	9	9	293	48	107	0.449	10	23	0.435	31	34	0.912	4	22	26	2.9	28	29	31	2	6	137	15.2
Luke Jackson	23	16	681	121	252	0.480	34	70	0.486	60	76	0.789	23	81	104	4.5	89	48	51	6	29	336	14.6
Ronell Taylor	50	35	1603	283	573	0.494	15	45	0.333	125	163	0.767	80	217	297	5.9	178	142	104	35	70	706	14.1
Jeff Graves	31	28	770	159	276	0.576	0	0	0.000	95	130	0.731	79	171	250	8.1	33	112	77	26	19	413	13.3
Peter Ramos	33	33	896	184	332	0.554	0	0	0.000	66	107	0.617	46	162	208	6.3	38	114	94	45	8	434	13.2
Julius Hodge	2	0	30	10	15	0.667	0	1	0.000	5	7	0.714	1	7	8	4.0	3	4	5	0	1	25	12.5
Randy Livingston	46	46	1806	175	472	0.371	61	195	0.313	154	182	0.846	37	178	215	4.7	488	124	160	7	75	565	12.3
Ricky Sanchez	50	21	1402	194	480	0.404	98	268	0.366	93	125	0.744	35	177	212	4.2	85	170	80	36	32	579	11.6
Lance Allred	43	16	899	155	296	0.524	0	1	0.000	123	154	0.799	79	164	243	5.7	24	100	48	9	16	433	10.1
Mouhamed Sene	15	1	322	58	113	0.513	0	0	0.000	32	54	0.593	49	59	108	7.2	5	48	23	23	10	148	9.9
DeSean Hadley	11	0	230	29	61	0.475	12	28	0.429	16	22	0.727	7	22	29	2.6	19	31	16	1	11	86	7.8
(Total)	27	8	616	51	148	0.345	12	55	0.218	45	59	0.763	16	52	68	2.5	58	64	40	2	25	159	5.9
Jermaine Blackburn	36	20	829	114	216	0.528	12	46	0.261	35	51	0.686	24	82	106	2.9	64	69	55	10	34	275	7.6
Dalron Johnson	2	0	29	6	12	0.500	0	1	0.000	1	1	1.000	5	3	8	4.0	0	4	0	1	0	13	6.5
Eric Williams	6	0	76	17	29	0.586	0	0	0.000	1	3	0.333	6	11	17	2.8	3	13	11	1	1	35	5.8
John Gilchrist	3	0	44	6	11	0.545	1	5	0.200	3	5	0.600	0	4	4	1.3	7	4	8	0	5	16	5.3
(Total)	13	0	196	20	53	0.377	3	15	0.200	9	13	0.692	3	16	19	1.5	19	10	20	0	14	52	4.0
Badou Gaye	12	1	138	22	44	0.500	0	1	0.000	8	18	0.444	18	33	51	4.3	5	28	16	7	2	52	4.3
Tim Barnes	42	2	721	51	142	0.359	20	53	0.377	23	24	0.958	12	51	63	1.5	94	60	38	2	36	145	3.5
(Total)	48	7	848	62	164	0.378	24	59	0.407	25	26	0.962	13	64	77	1.6	109	68	47	2	39	173	3.6
Chad Bell	11	1	155	9	23	0.391	0	0	0.000	8	15	0.533	7	19	26	2.4	3	18	6	5	2	26	2.4
Mike Efevberha	5	0	31	4	18	0.222	0	5	0.000	3	3	1.000	3	2	5	1.0	2	4	2	0	0	11	2.2
TOTALS	50		12125	1880	3928	0.479	283	795	0.356	950	1258	0.755	560	1559	2119	42.4	1244	1206	868	236	405	4993	99.9
OPPONENTS	50		12125	1760	3948	0.446	236	709	0.333	1057	1415	0.747	611	1474	2085	41.7	837	1075	860	212	415	4813	96.3

2006-07 NBA D-LEAGUE PLAYOFF STATISTICS

WESTERN DIVISION FINAL

IDAHO 91 - COLORADO 94 IN OVERTIME

(COLORADO WINS SERIES 1-0)

IDAHO	G	GS	MIN	FGM	FGA	Pct.	3PM	3PA	Pct.	FTM	FTA	Pct.	OR	DR	REB	Avg.	AST	PF	TO	BS	ST	PTS	Avg.
Ronell Taylor	1	1	46	13	22	0.591	0	0	0.000	3	7	0.429	4	5	9	9.0	4	2	4	1	2	29	29.0
Lance Allred	1	1	48	10	17	0.588	0	0	0.000	4	6	0.667	2	15	17	17.0	1	1	2	0	1	24	24.0
DeSean Hadley	1	0	25	3	6	0.500	2	4	0.500	6	6	1.000	1	2	3	3.0	1	6	2	1	1	14	14.0
Ricky Sanchez	1	1	49	5	14	0.357	2	8	0.250	0	0	0.000	3	6	9	9.0	2	3	1	2	1	12	12.0
Eddie Robinson	1	1	27	4	14	0.286	0	0	0.000	1	1	1.000	0	1	1	1.0	4	2	1	1	2	9	9.0
Badou Gaye	1	0	15	1	2	0.500	0	0	0.000	0	0	0.000	4	3	7	7.0	1	2	0	1	0	2	2.0
John Gilchrist	1	0	3	0	0	0.000	0	0	0.000	1	2	0.500	0	0	0	0.0	0	1	0	0	0	1	1.0
Tim Barnes	1	1	44	0	7	0.000	0	5	0.000	0	0	0.000	1	5	6	6.0	9	3	3	0	1	0	0.0
Dalron Johnson	1	0	2	0	0	0.000	0	0	0.000	0	0	0.000	0	0	0	0.0	0	1	1	0	0	0	0.0
Eric Williams	1	0	6	0	4	0.000	0	0	0.000	0	0	0.000	1	1	2	2.0	0	0	0	1	1	0	0.0
TOTALS	1		265	36	86	0.419	4	17	0.235	15	22	0.682	16	38	54	54.0	22	21	14	7	9	91	91.0
OPPONENTS	1		265	38	91	0.418	4	15	0.267	14	19	0.737	17	37	54	54.0	19	21	10	1	8	94	94.0

2007-08

REGULAR SEASON RECORD: 36-14

PLAYOFF RECORD: 3-1

HEAD COACH

BRYAN GATES

AWARDS

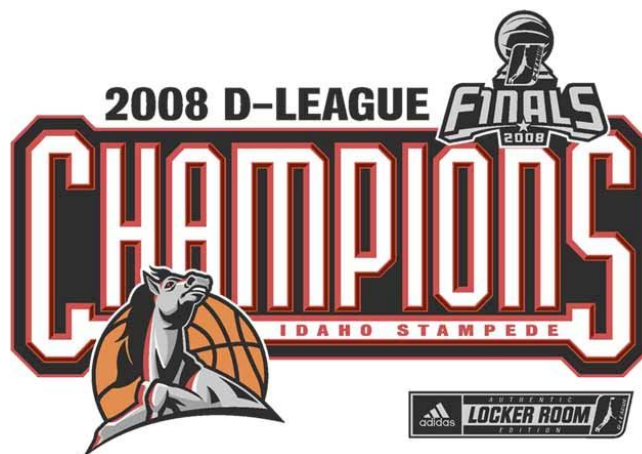
BRYAN GATES – D-LEAGUE COACH OF THE YEAR

NBA D-LEAGUE CHAMPIONS

MOUHAMED SENE – CO-DEFENSIVE PLAYER OF THE YEAR

BRENT PETWAY – ALL-STAR DUNK CONTEST WINNER

LANCE ALLRED - ALL-STAR HORSE WINNER



2007-08 IDAHO STAMPEDE TEAM STATISTICS

IDAHO	G	GS	MIN	FGM	FGA	Pct.	3PM	3PA	Pct.	FTM	FTA	Pct.	OR	DR	REB	Avg.	AST	PF	TO	BS	ST	PTS	Avg.
Taurean Green	4	4	150	22	56	0.393	9	18	0.500	24	28	0.857	3	18	21	5.3	39	9	16	2	8	77	19.3
Mickael Gelabale	6	1	193	43	72	0.597	7	20	0.350	14	18	0.778	8	18	26	4.3	14	11	6	4	6	107	17.8
Randy Livingston	43	39	1743	232	528	0.439	80	229	0.349	165	185	0.892	25	155	180	4.2	451	126	180	10	57	709	16.5
Lance Allred	38	33	1121	234	457	0.512	2	2	1.000	146	185	0.789	116	265	381	10.0	53	86	66	16	16	616	16.2
Mike Taylor	39	6	1085	204	423	0.482	47	139	0.338	111	157	0.707	37	99	136	3.5	168	93	134	9	49	566	14.5
Cory Violette	50	40	1443	259	508	0.510	3	12	0.250	150	208	0.721	129	224	353	7.1	92	135	104	36	51	671	13.4
Luke Jackson	19	11	505	81	198	0.409	25	66	0.379	66	79	0.835	17	53	70	3.7	61	25	37	3	21	253	13.3
Roberto Bergersen	47	40	1458	239	502	0.476	95	245	0.388	43	55	0.782	21	115	136	2.9	130	103	78	12	57	616	13.1
Mouhamed Sene	27	4	761	131	244	0.537	0	0	0.000	73	126	0.579	81	162	243	9.0	11	76	45	47	19	335	12.4
Ernest Scott	40	10	902	113	274	0.412	56	162	0.346	36	49	0.735	34	104	138	3.5	45	76	58	14	25	318	8.0
Josh McRoberts	15	2	399	46	111	0.414	2	13	0.154	21	30	0.700	25	71	96	6.4	38	24	31	14	9	115	7.7
Brent Petway	45	24	1084	138	252	0.548	11	37	0.297	42	72	0.583	56	120	176	3.9	59	103	55	68	35	329	7.3
Ricky Sanchez	25	1	482	67	151	0.444	41	92	0.446	7	14	0.500	2	58	60	2.4	24	64	28	10	19	182	7.3
Jason Ellis	37	10	588	80	153	0.523	0	1	0.000	39	47	0.830	102	87	189	5.1	23	80	23	11	20	199	5.4
Marcus Campbell	5	0	52	8	18	0.444	0	0	0.000	10	12	0.833	2	17	19	3.8	0	8	11	4	1	26	5.2
Anthony Washington	2	0	21	3	7	0.429	0	0	0.000	0	0	0.000	1	1	2	1.0	1	3	1	2	0	6	3.0
Eric Chenowith	9	0	60	10	22	0.455	0	1	0.000	3	7	0.429	8	12	20	2.2	1	16	3	6	1	23	2.6
Dwuan Rice	2	0	3	0	1	0.000	0	0	0.000	0	0	0.000	0	0	0	0.0	0	0	0	0	0	0	0.0
TOTALS	50		12050	1910	3977	0.480	378	1037	0.365	950	1272	0.747	667	1579	2246	44.9	1210	1038	876	268	394	5148	103.0
OPPONENTS	50		12050	1839	4039	0.455	323	875	0.369	972	1286	0.756	622	1408	2030	40.6	962	1033	775	219	505	4973	99.5

IDAHO	MIN	REB	AST	ST	TO	BL	PTS	MIN	REB	AST	STL	TO	BLK	PTS
Randy Livingston	49	9	22	5	9	1	37	40.5	4.2	10.5	1.3	4.2	0.2	16.5
Mike Taylor	42	9	11	5	11	2	32	27.8	3.5	4.3	1.3	3.4	0.2	14.5
Cory Violette	44	14	6	4	6	7	32	28.9	7.1	1.8	1.0	2.1	0.7	13.4
Luke Jackson	36	10	9	3	4	1	30	26.6	3.7	3.2	1.1	1.9	0.2	13.3
Roberto Bergersen	46	7	8	4	7	1	31	31.0	2.9	2.8	1.2	1.7	0.3	13.1
Ernest Scott	41	13	4	3	8	2	22	22.6	3.5	1.1	0.6	1.5	0.4	8.0
Josh McRoberts	32	12	6	2	5	3	16	26.6	6.4	2.5	0.6	2.1	0.9	7.7
Brent Petway	42	13	4	4	5	5	20	24.1	3.9	1.3	0.8	1.2	1.5	7.3
Jason Ellis	44	25	2	3	2	3	20	15.9	5.1	1.6	0.5	0.6	0.3	5.4
Anthony Washington	16	1	1	0	1	1	4	10.5	1.0	0.5	0.0	0.5	1.0	3.0
Eric Chenowith	15	7	1	1	1	2	12	6.7	2.2	0.1	0.1	0.3	0.7	2.6
Dwuan Rice	2	0	0	0	0	0	0	1.5	0.0	0.0	0.0	0.0	0.0	0.0
Others	46	20	13	5	7	7	32	26.3	7.1	1.3	0.7	1.6	0.8	12.8
TEAM	265	56	37	13	31	10	125	241.0	44.9	24.2	7.9	17.5	5.4	103.0
OPPONENTS	265	55	34	18	24	10	132	241.0	40.6	19.2	10.1	15.5	4.4	99.5

2007-08 IDAHO STAMPEDE PLAYOFF STATISTICS

IDAHO	G	GS	MIN	FGM	FGA	Pct.	3PM	3PA	Pct.	FTM	FTA	Pct.	OR	DR	REB	Avg.	AST	PF	TO	BS	ST	PTS	Avg.
Cory Violette	4	3	155	27	62	0.435	1	3	0.333	20	23	0.870	12	36	48	12.0	9	11	8	4	2	75	18.8
Mike Taylor	4	1	104	19	41	0.463	10	18	0.556	15	21	0.714	1	18	19	4.8	5	12	16	1	7	63	15.8
Roberto Bergersen	4	4	117	18	58	0.310	8	32	0.250	9	10	0.900	3	10	13	3.3	5	6	8	1	5	53	13.3
Luke Jackson	4	0	98	15	38	0.395	3	12	0.250	18	18	1.000	3	12	15	3.8	20	9	9	3	3	51	12.8
Jason Ellis	4	4	136	17	31	0.548	0	0	0.000	11	11	1.000	32	16	48	12.0	3	17	3	4	3	45	11.3
Randy Livingston	4	4	170	17	48	0.354	1	19	0.053	6	8	0.750	1	23	24	6.0	30	10	16	2	6	41	10.3
Brent Petway	4	4	99	11	18	0.611	0	1	0.000	9	10	0.900	7	10	17	4.3	2	4	2	4	4	31	7.8
Josh McRoberts	4	0	77	9	18	0.500	0	1	0.000	7	8	0.875	4	16	20	5.0	4	11	4	5	4	25	6.3
Dwuan Rice	1	0	1	0	0	0.000	0	0	0.000	0	0	0.000	0	0	0	0.0	0	0	0	0	0	0	0.0
Anthony Washington	2	0	3	0	1	0.000	0	0	0.000	0	0	0.000	0	0	0	0.0	0	1	0	0	0	0	0.0
TOTALS	4		960	133	315	0.422	23	86	0.267	95	109	0.872	63	141	204	51.0	78	81	66	24	34	384	96.0
OPPONENTS	4		960	139	315	0.441	25	71	0.352	72	97	0.742	38	118	156	39.0	64	84	56	24	34	375	93.8

IDAHO	MIN	REB	AST	ST	TO	BL	PTS	MIN	REB	AST	STL	TO	BLK	PTS
Cory Violette	41	14	3	1	4	3	22	38.8	12.0	2.3	0.5	2.0	1.0	18.8
Mike Taylor	33	8	3	3	7	1	27	26.0	4.8	1.3	1.8	4.0	0.3	15.8
Roberto Bergersen	37	7	2	2	4	1	15	29.3	3.3	1.3	1.3	2.0	0.3	13.3
Luke Jackson	28	7	10	2	3	2	20	24.5	3.8	5.0	0.8	2.3	0.8	12.8
Jason Ellis	41	16	1	1	1	2	15	34.0	12.0	0.8	0.8	0.8	1.0	11.3
Randy Livingston	44	7	9	3	7	2	15	42.5	6.0	7.5	1.5	4.0	0.5	10.3
Brent Petway	27	7	2	2	1	2	12	24.8	4.3	0.5	1.0	0.5	1.0	7.8
Josh McRoberts	23	9	2	2	2	3	10	19.3	5.0	1.0	1.0	1.0	1.3	6.3
Dwuan Rice	1	0	0	0	0	0	0	1.0	0.0	0.0	0.0	0.0	0.0	0.0
Anthony Washington	2	0	0	0	0	0	0	1.5	0.0	0.0	0.0	0.0	0.0	0.0
TEAM	240	56	25	13	18	9	108	240.0	51.0	19.5	8.5	16.5	6.0	96.0
OPPONENTS	240	42	20	9	17	7	101	240.0	39.0	16.0	8.5	14.0	6.0	93.8

IDAHO STAMPEDE

2007-08 Game-by-Game Recap

Date	Opponent	W/L	Rec	Score	High Scorer	High Rebounder	Assist Leader	Att.
Nov 23	Albuquerque	L	0-1	92-94	Lance Allred 30	Ernest Scott 11	Lance Allred 4	3994
Nov 24	Colorado	W	1-1	110-109	Cory Violette 23	Lance Allred 7	Randy Livingston 20	0
Nov 27	Los Angeles	W	2-1	118-111	Lance Allred 23	Lance Allred 14	Randy Livingston 10	0
Nov 30	DAKOTA	W	3-1	97-96	Lance Allred 20	Lance Allred 10	Randy Livingston 14	3119
Dec 1	ALBUQUERQUE	W	4-1	92-84	Roberto Bergersen 30	Ernest Scott 13	Randy Livingston 8	3362
Dec 4	SIOUX FALLS	W	5-1	106-97	Luke Jackson 30	Lance Allred 11	Luke Jackson 9	2139
Dec 7	Sioux Falls	L	5-2	*113-122	Randy Livingston 37	Lance Allred 20	Randy Livingston 10	3393
Dec 8	Dakota	L	5-3	100-108	Randy Livingston 28	Lance Allred 13	Roberto Bergersen 6	3302
Dec 14	Rio Grande Valley	L	5-4	125-132	Lance Allred 32	Lance Allred 8	Taurean Green 10	4365
Dec 15	Austin	L	5-5	117-127	Roberto Bergersen 31	Lance Allred 11	Randy Livingston 12	1484
Dec 19	Bakersfield	W	6-5	105-86	Lance Allred 25	Lance Allred 8	Taurean Green 11	968
Dec 21	Bakersfield	W	7-5	102-94	Lance Allred 24	Lance Allred 9	Taurean Green 13	1467
					Taurean Green 24	Jason Ellis 9		
Dec 26	BAKERSFIELD	W	8-5	114-99	Lance Allred 24	Lance Allred 14	Randy Livingston 22	2351
Dec 28	ANAHEIM	W	9-5	91-75	Lance Allred 19	Mouhamed Sene 10	Roberto Bergersen 8	3658
						Cory Violette 10	Randy Livingston 8	
Dec 29	ANAHEIM	W	10-5	120-113	Randy Livingston 26	Lance Allred 11	Randy Livingston 12	2335
Jan 4	TULSA	W	11-5	101-92	Cory Violette 24	Lance Allred 11	Randy Livingston 16	2616
Jan 5	BAKERSFIELD	W	12-5	100-87	Cory Violette 16	Lance Allred 13	Randy Livingston 11	2956
Jan 11	COLORADO	W	13-5	97-94	Mike Taylor 22	Cory Violette 13	Josh McRoberts 6	2539
							Randy Livingston 6	
Jan 12	FORT WAYNE	W	14-5	97-92	Ernest Scott 19	Lance Allred 12	Randy Livingston 14	2682
Jan 15	RIO GRANDE VALLEY	W	15-5	93-89	Lance Allred 24	Josh McRoberts 12	Randy Livingston 11	0
						Lance Allred 12		
Jan 17	Fort Wayne	W	16-5	117-93	Mike Taylor 20	Mouhamed Sene 13	Randy Livingston 12	0
Jan 19	Bakersfield	W	17-5	108-94	Mouhamed Sene 26	Lance Allred 9	Mike Taylor 11	3622
Jan 24	LOS ANGELES	W	18-5	97-90	Mike Taylor 24	Brent Petway 13	Randy Livingston 13	1718
Jan 26	LOS ANGELES	W	19-5	100-99	Mike Taylor 21	Lance Allred 8	Randy Livingston 13	3808
Feb 1	BAKERSFIELD	W	20-5	98-89	Roberto Bergersen 22	Lance Allred 12	Mike Taylor 10	2345
Feb 2	Anaheim	W	21-5	95-91	Cory Violette 20	Lance Allred 11	Mike Taylor 5	1693
Feb 4	Anaheim	W	22-5	93-87	Mickael Gelabale 24	Mouhamed Sene 14	Cory Violette 4	0
							Roberto Bergersen 4	
Feb 8	LOS ANGELES	W	23-5	104-90	Randy Livingston 24	Mouhamed Sene 15	Randy Livingston 13	3557
Feb 9	LOS ANGELES	L	23-6	95-118	Mickael Gelabale 18	Lance Allred 9	Mike Taylor 8	3157
Feb 11	Utah	L	23-7	92-99	Mike Taylor 24	Lance Allred 10	Randy Livingston 5	3332
					Mickael Gelabale 24			
Feb 18	Iowa	W	24-7	108-100	Mike Taylor 23	Mouhamed Sene 13	Randy Livingston 12	2536
Feb 22	ANAHEIM	W	25-7	109-98	Mike Taylor 29	Mouhamed Sene 12	Randy Livingston 13	2594
Feb 23	ANAHEIM	L	25-8	91-107	Brent Petway 20	Lance Allred 14	Randy Livingston 7	3670
Feb 28	Los Angeles	W	26-8	93-90	Randy Livingston 27	Lance Allred 9	Randy Livingston 8	0
Mar 2	Los Angeles	L	26-9	98-115	Randy Livingston 20	Mouhamed Sene 15	Randy Livingston 13	0
Mar 5	AUSTIN	L	26-10	102-105	Mouhamed Sene 30	Mouhamed Sene 18	Randy Livingston 20	1980
Mar 7	UTAH	W	27-10	111-87	Mike Taylor 20	Mouhamed Sene 10	Randy Livingston 8	2312
Mar 8	UTAH	W	28-10	95-90	Mike Taylor 22	Lance Allred 15	Randy Livingston 9	4007
Mar 13	Utah	W	29-10	100-99	Cory Violette 21	Cory Violette 10	Randy Livingston 12	3909
Mar 15	Utah	W	30-10	93-88	Randy Livingston 22	Jason Ellis 9	Randy Livingston 7	3912
Mar 21	Anaheim	L	30-11	86-93	Jason Ellis 17	Jason Ellis 10	Randy Livingston 6	0
Mar 22	Anaheim	L	30-12	107-113	Roberto Bergersen 23	Cory Violette 12	Randy Livingston 9	0
Mar 28	UTAH	W	31-12	110-103	Mike Taylor 18	Josh McRoberts 10	Randy Livingston 8	3228
Mar 29	UTAH	L	31-13	106-109	Randy Livingston 26	Jason Ellis 10	Randy Livingston 6	2782
Apr 2	Los Angeles	L	31-14	100-105	Randy Livingston 24	Cory Violette 14	Randy Livingston 11	0
Apr 4	Bakersfield	W	32-14	91-86	Randy Livingston 26	Luke Jackson 10	Randy Livingston 6	4018
						Cory Violette 10		
Apr 6	Tulsa	W	33-14	123-117	Mike Taylor 32	Josh McRoberts 9	Randy Livingston 9	0
Apr 7	Utah	W	34-14	*119-117	Randy Livingston 36	Jason Ellis 11	Randy Livingston 10	3174
Apr 11	BAKERSFIELD	W	35-14	98-90	Luke Jackson 22	Jason Ellis 25	Mike Taylor 9	2572
Apr 12	IOWA	W	36-14	119-110	Luke Jackson 23	Brent Petway 10	Randy Livingston 16	3625
						Jason Ellis 10		

CAPS indicate home game

*indicates overtime

HOME & ROAD STATS

HOME STATS

Idaho	G	GS	MIN	FGM	FGA	Pct.	FTM	FTA	Pct.	3PM	3PA	Pct.	PTS	Avg.	OR	DR	REB	Avg.	AST	PF	TO	BS	ST
Lance Allred	21	20	588	127	247	.514	69	87	.793	0	0	---	323	15.4	67	147	214	10.2	27	47	41	10	10
Mike Taylor	22	4	591	117	222	.527	63	90	.700	30	82	.366	327	14.9	17	53	70	3.2	96	49	76	6	28
Randy Livingston	23	22	914	113	252	.448	72	84	.857	38	112	.339	336	14.6	10	80	90	3.9	261	66	108	4	29
Mickael Gelabale	3	0	86	18	33	.545	4	6	.667	3	10	.300	43	14.3	3	5	8	2.7	5	4	2	3	2
Luke Jackson	9	4	218	38	88	.432	39	49	.796	10	26	.385	125	13.9	7	23	30	3.3	32	9	13	2	5
Roberto Bergersen	23	22	703	112	249	.450	24	27	.889	43	125	.344	291	12.7	11	55	66	2.9	70	45	35	8	27
Cory Violette	25	21	660	122	225	.542	62	83	.747	1	5	.200	307	12.3	59	129	188	7.5	49	60	57	17	23
Mouhamed Sene	18	3	493	87	162	.537	41	69	.594	0	0	---	215	11.9	51	116	167	9.3	6	48	31	29	14
Brent Petway	23	15	597	80	143	.559	23	35	.657	7	24	.292	190	8.3	33	75	108	4.7	35	53	26	43	16
Ernest Scott	19	5	410	50	118	.424	18	25	.720	28	75	.373	146	7.7	20	54	74	3.9	18	35	27	7	13
Josh McRoberts	8	0	213	22	56	.393	16	21	.762	1	10	.100	61	7.6	15	38	53	6.6	27	16	16	7	7
Ricky Sanchez	13	0	235	30	73	.411	2	3	.667	19	51	.373	81	6.2	0	23	23	1.8	10	28	10	7	8
Jason Ellis	16	4	224	31	57	.544	11	13	.846	0	0	---	73	4.6	48	41	89	5.6	10	27	11	7	13
Eric Chenowith	4	0	27	8	12	.667	0	1	.000	0	1	.000	16	4.0	2	7	9	2.3	0	9	1	5	0
Anthony Washington	2	0	21	3	7	.429	0	0	---	0	0	---	6	3.0	1	1	2	1.0	1	3	1	2	0
Marcus Campbell	2	0	19	1	6	.167	1	2	.500	0	0	---	3	1.5	0	6	6	3.0	0	2	4	1	0
Dwuan Rice	1	0	1	0	1	.000	0	0	---	0	0	---	0	0.0	0	0	0	0.0	0	0	0	0	0
TOTALS	25		6000	959	1951	.492	445	595	.748	180	521	.345	2543	101.7	344	853	1197	47.9	647	501	459	158	195
OPPONENTS	25		6000	897	2023	.443	457	619	.738	152	449	.339	2403	96.1	325	713	1038	41.5	431	501	373	80	269

ROAD STATS

Idaho	G	GS	MIN	FGM	FGA	Pct.	FTM	FTA	Pct.	3PM	3PA	Pct.	PTS	Avg.	OR	DR	REB	Avg.	AST	PF	TO	BS	ST
Mickael Gelabale	3	1	107	25	39	.641	10	12	.833	4	10	.400	64	21.3	5	13	18	6.0	9	7	4	1	4
Taurean Green	4	4	150	22	56	.393	24	28	.857	9	18	.500	77	19.3	3	18	21	5.3	39	9	16	2	8
Randy Livingston	20	17	829	119	276	.431	93	101	.921	42	117	.359	373	18.6	15	75	90	4.5	190	60	72	6	28
Lance Allred	17	13	533	107	210	.510	77	98	.786	2	2	1.000	293	17.2	49	118	167	9.8	26	39	25	6	6
Cory Violette	25	19	783	137	283	.484	88	125	.704	2	7	.286	364	14.6	70	95	165	6.6	43	75	47	19	28
Mike Taylor	17	2	494	87	201	.433	48	67	.716	17	57	.298	239	14.1	20	46	66	3.9	72	44	58	3	21
Roberto Bergersen	24	18	755	127	253	.502	19	28	.679	52	120	.433	325	13.5	10	60	70	2.9	60	58	43	4	30
Mouhamed Sene	9	1	268	44	82	.537	32	57	.561	0	0	---	120	13.3	30	46	76	8.4	5	28	14	18	5
Luke Jackson	10	7	287	43	110	.391	27	30	.900	15	40	.375	128	12.8	10	30	40	4.0	29	16	24	1	16
Ricky Sanchez	12	1	247	37	78	.474	5	11	.455	22	41	.537	101	8.4	2	35	37	3.1	14	36	18	3	11
Ernest Scott	21	5	492	63	156	.404	18	24	.750	28	87	.322	172	8.2	14	50	64	3.0	27	41	31	7	12
Josh McRoberts	7	2	186	24	55	.436	5	9	.556	1	3	.333	54	7.7	10	33	43	6.1	11	8	15	7	2
Marcus Campbell	3	0	33	7	12	.583	9	10	.900	0	0	---	23	7.7	2	11	13	4.3	0	6	7	3	1
Brent Petway	22	9	487	58	109	.532	19	37	.514	4	13	.308	139	6.3	23	45	68	3.1	24	50	29	25	19
Jason Ellis	21	6	364	49	96	.510	28	34	.824	0	1	.000	126	6.0	54	46	100	4.8	13	53	12	4	7
Eric Chenowith	5	0	33	2	10	.200	3	6	.500	0	0	---	7	1.4	6	5	11	2.2	1	7	2	1	1
Dwuan Rice	1	0	2	0	0	---	0	0	---	0	0	---	0	0.0	0	0	0	0.0	0	0	0	0	0
TOTALS	25		6050	951	2026	.469	505	677	.746	198	516	.384	2605	104.2	323	726	1049	42.0	563	537	417	110	199
OPPONENTS	25		6050	942	2016	.467	515	667	.772	171	426	.401	2570	102.8	297	695	992	39.7	531	532	402	139	236



**ALL TIME
RECORDS**

STAMPEDE INDIVIDUAL RECORDS

CAREER		PLAYER	YEAR
Games:	115	Randy Livingston	2000-07
Points:	1,515	Randy Livingston	2000-07
Field Goals:	634	Dennis Edwards	1997-99
Free Throws:	386	Randy Livingston	2000-07
3-Pl. Field Goals:	152	Ricky Sanchez	2005-07
Rebounds:	595	Eric Chenowith	2005-06
Assists:	1,036	Randy Livingston	2000-07
Blocked Shots:	105	Sam Clancy	2004-05
Steals:	174	Chris Garner	98-99, 02-03
Coaching Wins:	49	Joe Wolf	2005-06
Youngest player:	18	Ricky Sanchez	2005-06
Call-ups to NBA:	9	Randy Livingston	

SEASON		PLAYER	YEAR
Points:	918	Sam Clancy	2004-05
Scoring Average:	21.7	Damon Jones	1998-99
Field Goals:	372	Dennis Edwards	1998-99
Free Throws:	270	Sam Clancy	2004-05
3-Pl. Field Goals:	120	Damon Jones	1998-99
Rebounds:	595	Eric Chenowith	2005-06
Assists:	488	Randy Livingston	2006-07
Blocked Shots:	105	Sam Clancy	2004-05
Steals:	103	Chris Garner	2002-03

GAME		PLAYER	DATE
Points:	46	Brian Green	1/22/03
Field Goals:	18	Brian Green	1/22/03
Free Throws:	16	Ben Davis	12/4/99
3-Pl. Field Goals:	8	Damon Jones	12/11/98
	8	David Jackson	1/19/06
Rebounds:	29	Eric Chenowith	12/29/05
Assists:	23	Randy Livingston	3/10/06
Blocked Shots:	8	Sam Clancy	1/11/05
Steals:	7	Michael Johnson	3/4/03
	7	Jermaine Boyette	11/21/05

STAMPEDE ANNUAL LEADERS

YEAR	POINTS	REBOUNDS
1997-98	Nate Huffman 628	Devin Davis 451
1998-99	Dennis Edwards 891	Jerome Lane 492
1999-00	Ira Newble 818	Ira Newble 369
2000-01	Willie Burton 408	Sharif Fajardo 206
2002-03	Brian Green 863	Chianti Roberts 275
2003-04	DeSean Hadley 834	Josh Davis 385
2004-05	Sam Clancy 918	Sam Clancy 520
2005-06	David Jackson 838	Eric Chenowith 595
2006-07	Ronell Taylor 706	Ronell Taylor 297
2007-08		

YEAR	ASSISTS	BLOCKED SHOTS
1997-98	Ernest Hall 350	Nate Huffman 100
1998-99	Damon Jones 222	D. Alexander & F. Cartwright 33
1999-00	Rusty Laftue 318	Ira Newble 45
2000-01	Randy Livingston 174	Willie Burton 22
2002-03	Chris Garner 341	Antonio Harvey 70
2003-04	David Bailey 358	Noel Felix 42
2004-05	Taliek Brown 304	Sam Clancy 105
2005-06	Eddy Barlow 199	Eric Chenowith 49
2006-07	Randy Livingston 488	Peter Ramos 45
2007-08		

YEAR	STEALS	MINUTES
1997-98	Ernest Hall 67	Ernest Hall 1,965
1998-99	Chris Garner 71	Damon Jones 1,400
1999-00	Ira Newble 98	Ira Newble 2,026
2000-01	Randy Livingston 53	Randy Livingston 802
2002-03	Chris Garner 103	Chris Garner 1,679
2003-04	David Bailey 70	DeSean Hadley 1,824
2004-05	Alhaji Mohammed 61	Sam Clancy 1,809
2005-06	David Jackson 53	Eric Chenowith 1,632
2006-07	Randy Livingston 75	Randy Livingston 1,806
2007-08		



IN THE COMMUNITY



STAMPEDE COMMUNITY FOUNDATION



POPULATION WE SERVE/CURRENT PROGRAMS:

YOUTH BASKETBALL CLINICS

The Idaho Stampede sponsors holiday break basketball camps for the local YMCA. In addition to providing monetary support for these events, the team sends at least one staff member to provide instruction and motivation for the young attendees. The Hope House in Nampa has been the site of Idaho Stampede clinics for youth. In addition to coaching the children from the Hope House, Stampede staffers spend time on the court playing alongside these Canyon County youth.

The Idaho Stampede extends its basketball clinics throughout the valley, traveling to locations such as Fruitland, where more than 100 Fruitland-Payette-New Plymouth area kids spend half a day on the floor at Fruitland High School.

KEY BANK READ TO ACHIEVE PROGRAM

The Idaho Stampede developed an educational outreach titled "The Reading Stampede" that will now be a part of the NBA Development League's "Read To Achieve" initiative. The program is designed to motivate elementary students in grades K through Grade 3 to develop a lifelong love of reading. The content areas covered in this reading program are non-fiction.

With significant support from Key Bank, the program was a huge success in the past four years. The plan for this year is to broaden and expand the educational outreach effort to include math and science, but to maintain a level of activity with the Reading Stampede as well.

Through this program, the Idaho Stampede creates an "All Star Reading Team" of both students and teachers from various school districts in the Treasure Valley. The objective of this program is to motivate elementary students to read. Students are shown how reading allows them to "learn and explore," "achieve their dreams" and most of all, how reading can be "fun"! Sponsored by local corporations and foundations, the program will use the excitement of professional basketball and Stampede mascot Rumble to encourage reading.

YOUTH & BASKETBALL AWARENESS PROGRAMS

To encourage kids to participate in basketball at their youth organizations, the Stampede conducts a clinic for 100 athletes and coaches of local youth basketball teams. Stampede players and coaches lead clinics, skill drills and participate in 5-on-5 games with the children.

MICRON MATH PROGRAM

For the 2007-08 Stampede Season, the Idaho Stampede is slated to partner with the Micron Foundation to excite students in grade 7 about Math and Science. Workbooks that include Math and Science problems related to Basketball will be introduced into classrooms throughout the Treasure Valley. A very extensive incentive program will be incorporated to motivate students and teachers to excel at their development in the Math and Science classroom.

SEATS FOR KIDS

Unable to attend a game? Would you like your tickets given to a local community organization? The Idaho Stampede has a program for season ticket holders to donate tickets that cannot be used because of prior engagements. With your thoughtfulness, and the help of Big Brothers Big Sisters, children that are normally unable to attend games can come see the Stampede in action at the Qwest Arena. The donation are tax deductible.

APPEARANCES

The Stampede have an extraordinary amount of talented individuals in the organization who are often called upon to make public appearances including our mascots, players and front office staff members. When schedules allow, we attend autograph sessions, charity events, speaking engagements and school assemblies. In addition to players, AAA Rumble and the Farmers & Merchants State Bank Stampede Dance Team members participate.

MISSION:

The Idaho Stampede Community Foundation was established to enrich the lives of the youth and families of the Treasure Valley through community outreach efforts. The Stampede family, from players and coaches to the dance team and front office, are dedicated to making a difference in our community. Through programs we initiate, administer and support through the Idaho Stampede Community Foundation, our organization aspires to uphold a bond with the local community while contributing to its development and progress.

The Idaho Stampede Foundation, Inc., has an ambitious slate of programs and activities. It will take a number of years to fully develop this community outreach effort, but the following information is a recap of the programs and activities. The foundation will not focus on a specific demographic profile for its activities and programming.

The Stampede is a team with heart. Not only does it take heart to win on and off the court, it also takes hard work, commitment, teamwork and dedicated leaders. We have those necessary elements on our team, and through those elements, we want the Treasure Valley to know that we appreciate their support, and will continue to do our part to keep our communities thriving.





THE OPPONENTS

WESTERN DIVISION



ANAHEIM ARSENAL
Affiliations: L.A. Clippers,
Atlanta Hawks



BAKERSFIELD JAM
Affiliations: Golden State
Warriors, Orlando Magic



IDAHO STAMPEDE
Affiliations: Portland Trail
Blazers, Toronto Raptors



LOS ANGELES D-FENDERS
Affiliations: L.A. Lakers
SECOND LINE



RENO BIGHORNS
Affiliations: New York Knicks
Sacramento Kings



UTAH FLASH
Affiliations: Utah Jazz,
Boston Celtics



SOUTHWESTERN DIVISION



ALBUQUERQUE THUNDERBIRDS
Affiliations: Dallas Mavericks,
Miami Heat



AUSTIN TOROS
Affiliations: San Antonio Spurs



COLORADO 14ERS
Affiliations: Denver Nuggets,
New Jersey Nets



RIO GRANDE VALLEY VIPERS
Affiliations: Houston Rockets,
New Orleans Hornets



TULSA 66ERS
Affiliations: Oklahoma City Thunder

CENTRAL DIVISION



DAKOTA WIZARDS
Affiliations: Memphis Grizzlies,
Washington Wizards



ERIE BAYHAWKS
Affiliations: Cleveland Cavaliers,
Philadelphia 76ers



FORT WAYNE MAD ANTS
Affiliations: Indiana Pacers,
Detroit Pistons, Milwaukee Bucks



IOWA ENERGY
Affiliations: Chicago Bulls,
Phoenix Suns



SIOUX FALLS SKYFORCE
Affiliations: Charlotte Bobcats,
Minnesota Timberwolves



NBA Development League Media Contacts

Albuquerque Thunderbirds, Tingley Coliseum
111 Lomas Blvd. NW, Suite 240, Albuquerque, NM 87102
505-265-DUNK
Business Operations Manager, Preston Hendrix

Anaheim Arsenal, Anaheim Convention Center
198 W Cerritos Ave #5, Anaheim, Ca 92805
714-635-BALL
Media Relations Julius S. De La Cruz

Austin Toros, Austin Convention Center
7800 Shoal Creek Blvd. Suite 115W, Austin, TX 78757
512-236-8333
Manager, Media and Community Relations Perri Travillion

Bakersfield Jam, Rabobank Arena
1400 Norris Road, Bakersfield, CA 93308
661-716-4JAM (4526)
Team President/General Manager Michael Hirsch

Colorado 14ers, Broomfield Event Center
11450 Broomfield Lane, Broomfield, CO 80021
303-410-0700
Director of Media Relations/PR Erin Pahl

Dakota Wizards, The Bismarck Civic Center
919 South 7th Street, Suite 501, Bismarck, ND 58504
701.258.2255(BALL)
Director of Public/Media Relations Mike Offerdahl

Erie BayHawks, Louis J. Tullio Arena
110 East 8th Street, Erie, Pennsylvania 16506
814-790-5600
Director of Marketing & Communications Jeff Johns

Fort Wayne Mad Ants, Allen County War Memorial Coliseum
1910 St. Joe Center Rd., Suite 61, Fort Wayne, IN 46825
260-469-HOOPS
Assistant Dir. of Operations and Administration Sarah Wladecki

Iowa Energy, Wells Fargo Arena
833 5th Ave, Des Moines, Iowa 50309
515-462-2849
General Manager Chris Makris

Los Angeles D-Fenders, STAPLES Center
Toyota Sports Center, 555 Nash Street, El Segundo, CA 90245
310-426-2230
Coordinator, Media & Community Relations David Caldes

Rio Grande Valley Vipers, Dodge Arena
6400 N 10th St, Suite C, McAllen, TX 78504-3290
1-888-RGV-NBAD
Team President/Owner Ryan Murphy

Sioux Falls Skyforce, Sioux Falls Arena
2131 S Minnesota Ave., Sioux Falls, SD 57105
605-332-0605
Media/Public Relations Director Brett Hansen

Tulsa 66ers, Expo Square Pavilion
815 South Cincinnati, Tulsa, OK 74119
918-585-8444
Media and Community Relations Ryan Williams

Utah Flash, McKay Events Center
5011 N. Edgewood Drive, Provo, UT 84604
801-623-4434
VP of Communications Kent Partridge



THE MEDIA

SPORTS EDITORS, WRITERS AND COLUMNIST:

IDAHO STATESMAN, PO Box 40, Boise, ID 83707, Sports Department (208) 377-6449, Fax (208) 377-6449, www.idahostatesman.com. Sports Editor: Mike Prater, (208) 377-6421, mprater@idahostatesman.com. Beat Writer: Chris Langrill, clangrill@idahostatesman.com. Columnist: Brian Murphy, (208) 377-6444, bmurphy@idahostatesman.com.

IDAHO PRESS TRIBUNE, PO Box 9399, Nampa, ID 83652, Sports Department (208) 465-8111, Fax: (208) 467-9562, www.idahopress.com. Sports Editor: Phil Dailey, sports@idahopress.com.

THE ARBITER, 1910 University Drive, Boise, ID 83725, Phone: (208) 345-8204, Fax: (208) 426-3198, www.arbiteronline.com, Sports Editor: Jake Garcin, (208) 345-8204 x. 103, sports@arbiteronline.com

RADIO BROADCASTERS:

KIDO, 630 AM, 827 E. Park Blvd., Suite 201, Boise, ID 83712, Phone: (208) 344-6363, Fax: (208) 336-3735, Website: www.kfxd.com, Contact: Kevin Godwin, kevin.godwin@peakbroadcasting.com

KBOI, 670 AM, PO Box 1280, Boise, ID 83701, Phone: (208) 336-1821, Fax: (208) 336-3735, Contact: Paul Schneider, paul.schneider@citcomm.com

KTIK, 1350 AM, 1419 W. Bannock, Boise, ID 83702, Phone: (208) 424-1350, Fax: (208) 336-3734, Website: www.ktik.com, Contacts: Andrew Paul, andrew.paul@citcomm.com, and Jeff Caves, jeff.caves@citcomm.com

TELEVISION BROADCASTERS:

KBCI-TV (CBS) Ch. 2, PO Box 2, Boise, ID 83707, Phone: (208) 472-2203, Fax: (208) 336-1106, Contact: J Bates, jbates@kbc.com, Troy Oppie, toppie@kbc.com

KIVI-TV (ABC) Ch. 6, 1866 East Chisholm Drive, Nampa, ID 83687, Phone: (208) 381-6655, Fax: (208) 381-6661, Contacts: Joe Hughes, jhughes@6onyourside.com, Randy Simon, rsimon@kivitv.com

KTVB-TV (NBC) Ch. 7, PO Box 7, Boise, ID 83707, Phone: (208) 375-7277, Fax: (208) 375-7770, Contacts: David Augusto, daugusto@ktvb.com, Justin Corr, jcorr@ktvb.com, Zach Wolken, zwolken@ktvb.com

KTRV-TV (FOX) Ch. 12, 1 Sixth Street N., Nampa, ID, 83687, Phone: (208) 466-1200, Fax: (208) 467-6958, Contact: Kelly Cross, kcross@ktrv.com, Nate Keuster, nkeuster@ktrv.com.

IDAHO STAMPEDE 2008-2009 SEASON - 2008 NBA Development League Champions

NOVEMBER						
SUN	MON	TUE	WED	THU	FRI	SAT
						1
2	3	4	5	6	7	8
9	10	11	12	13	14	15
16	17	18	19	20	21	22
23	24	25	26	27	28	29
30						ANA 7:00 PM

DECEMBER						
SUN	MON	TUE	WED	THU	FRI	SAT
	1	2	3	4	5	6
7	8	9	10	11	12	13
14	15	16	17	18	19	20
21	22	23	24	25	26	27
28	29	30	31			

JANUARY						
SUN	MON	TUE	WED	THU	FRI	SAT
				1	2	3
4	5	6	7	8	9	10
11	12	13	14	15	16	17
18	19	20	21	22	23	24
25	26	27	28	29	30	31

FEBRUARY						
SUN	MON	TUE	WED	THU	FRI	SAT
1	2	3	4	5	6	7
8	9	10	11	12	13	14
15	16	17	18	19	20	21
22	23	24	25	26	27	28
29	30					

MARCH						
SUN	MON	TUE	WED	THU	FRI	SAT
1	2	3	4	5	6	7
8	9	10	11	12	13	14
15	16	17	18	19	20	21
22	23	24	25	26	27	28
29	30	31				

APRIL						
SUN	MON	TUE	WED	THU	FRI	SAT
			1	2	3	4
5	6	7	8	9	10	11

ALL TIMES MOUNTAIN STANDARD TIME

HOME GAMES AWAY GAMES
2009 NBA D-LEAGUE SHOWCASE - TIMES AND DATES
TBD. EVERY TEAM PLAYS TWO GAMES IN FOUR DAYS.

ANA - ANAHEIM ARSENAL
BAK - BAKERSFIELD JAM
ID - IDAHO STAMPEDE
LA - LOS ANGELES D-FENDERS
RNO - RENO BIGHORNS
UT - UTAH FLASH

ALB - ALBUQUERQUE THUNDERBIRDS
AUS - AUSTIN TOROS
CO - COLORADO 14ERS
RGV - RIO GRANDE VALLEY VIPERS
TUL - TULSA 66ERS

DAK - DAKOTA WIZARDS
ERI - ERIE BAYHAWKS
FTW - FORT WAYNE MAD ANTS
IA - IOWA ENERGY
SF - SIOUX FALLS SKYFORCE



THANK YOU FOR YOUR SUPPORT!

WE'RE LOOKING FORWARD TO
ANOTHER EXCITING
CHAMPIONSHIP SEASON!