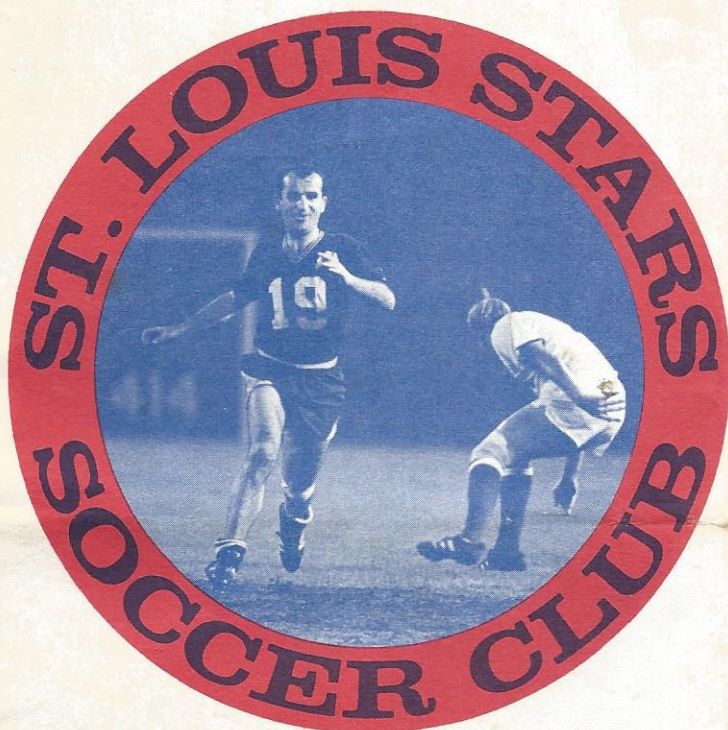


MATCH DAY

MAGAZINE



St. Louis Soccer Stars

President:

THEODORE R. P. MARTIN

Chairman of the Board:

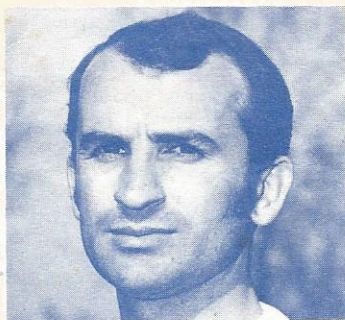
ROBERT R. HERMANN

Executive Vice President:

WALTER J. GIESLER

Directors:

WILLIAM BIDWELL
H. KING CARTER
WALTER J. GIESLER
ROBERT R. HERMANN
THEODORE R. P. MARTIN
EDWARD J. SCHNUCK
CHARLES A. THOMAS



Business Manager:

R. JAMES KOERNER

Executive Secretary:

EDITH R. DURNEY

Magazine Editor:

JIMMY JAYMES

Your Star Host for today's N.A.S.L. game is DRAGAN POPOVIC. The match, STARS VS. NEW YORK. The place, BUSCH MEM. STADIUM. The date, APRIL 17, 1971. Match Day Magazine, VOL. 1, NO. 1.

OUR COACHES

DRAGAN POPOVIC
Assistant Coach

GEORGE L. MEYER
Head Coach



SOCCER SUMMER CAMP Featuring Personalized Training of **PAT McBRIDE and STEVE FRANK**

of the Professional Soccer Stars

EACH PLAYER RECEIVES 20 HRS. OF TRAINING

THESE DATES AVAILABLE

June 14-18

July 5-9

Aug. 9-13

21-25

12-16

16-20

28-July 2

19-23

23-27

**COACH REGISTER YOUR
WHOLE TEAM**

Write: SOCCER CAMP
3323 a Watson
St. Louis, Mo. 63139
Call: 647-1675 or 638-1869

GOOD TASTE RUNS IN THE FAMILY

Next Home Game: **May 8th**
7:00 P.M. — Montreal

Giant International Game: **May 10th**
8:00 P.M. — HEARTS OF SCOTLAND

BASIC RULES

THE TEAM: Eleven players, including the goalkeeper.

DURATION OF GAME: Two 45-minute halves with a 15-minute halftime.

SCORING: A goal (one point) is scored when the whole of the ball (even in possession of the goalie) passes over the goal line between the posts and under the crossbar, provided it has not been thrown, carried or propelled by hand or arm of an attacking player.

OUT OF BOUNDS:

1. **THROW-IN:** An out of bounds ball on the side lines is brought in play through a throw-in, executed at the point where the ball left the field, by the team opposite that which touched it last on the field.

2. **GOAL KICK:** When the attackers last touch the ball before going over the end or goal line, the defenders bring it into play with a goal kick executed at the respective corner of the goal area.

3. **CORNER KICK:** When the ball goes out of bounds at the end or goal line being last touched by a player of the defending team, the attackers are awarded a corner kick executed from that corner of the field towards the goal. A goal may be scored direct from such a kick.

FREE KICKS: awarded as a result of fouls. Fouls must be evidently intentional.

1. **DIRECT FREE KICK:** awarded at spot of foul for tripping, kicking, holding, striking, pushing, charging violently, or handling the ball intentionally with the hands or forearm. A goal can be scored directly.

2. **PENALTY KICK:** awarded to attacking team if above violations are committed by a defender within his penalty area. Kick is executed from penalty spot and only defending goalie may face it.

3. **INDIRECT FREE KICK:** awarded for lesser violations; a goal cannot be scored until the ball has been touched by another player.

OFFSIDE: An attacker is offside if there are not at least two defenders between himself and the goal at the time the ball is played to him. He is not offside if he is behind the ball, if the ball last touched an opponent, if he is in his half of the field, or if he is not involved in the play. There is no offside on corner kicks, throw-ins, goal kicks or when the referee drops the ball.

The ST. LOUIS GATEWAY HOTEL . . . formerly the Statler Hilton .

- * Free Parking for registered guests
- * Free Parking after 5:00 P.M. for dinner guests
- * A few short blocks from Busch Stadium, Gateway Arch, Airline Ticket office and Limousine Service in Lobby
- * Private Meeting Rooms from 10 to 600 persons
- * Visit our Ship's Tavern and Galley, Lounge, Dining Room for delicious food and beverages

We host the After-the-Game Receptions of the St. Louis Soccer Booster Club — Meet the Stars and their visitors after each of the 10 League Home Matches.



THE *St. Louis Gateway* HOTEL

WASHINGTON AVENUE AT NINTH STREET
ST. LOUIS, MISSOURI 63101
Telephone 314 231-1400

JOIN
THE
ST. LOUIS
SOCCER
BOOSTER
CLUB

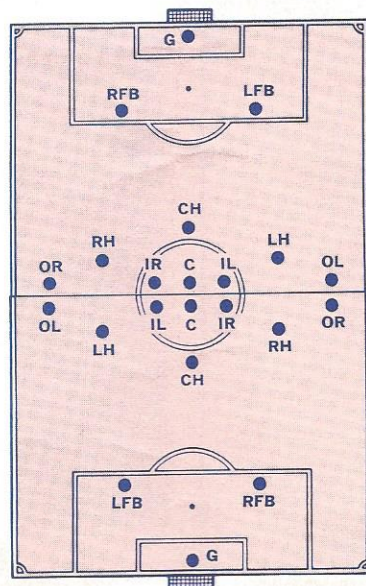
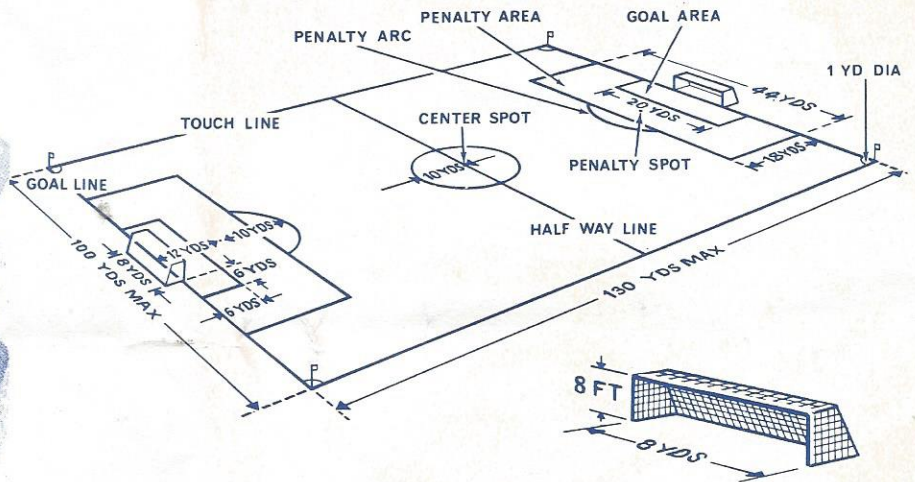
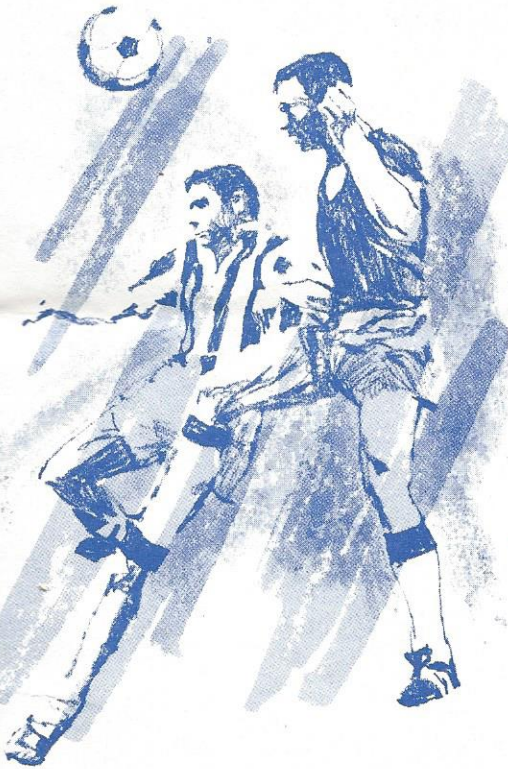
Write: BOOSTER CLUB
330 Marshall Rd.
St. Louis, Mo. 63119





ANHEUSER-BUSCH, INC. • SINCE 1852
 ST. LOUIS • NEWARK • LOS ANGELES • TAMPA • HOUSTON
 COLUMBUS • JACKSONVILLE • MERRIMACK

OF THE GAME



THE PLAYERS

- G GOALIE
- RFB RIGHT FULL BACK
- LFB LEFT FULL BACK
- CH CENTER HALF
- RH RIGHT HALF BACK
- LH LEFT HALF BACK
- OR OUTSIDE RIGHT
- OL OUTSIDE LEFT
- IR INSIDE RIGHT
- IL INSIDE LEFT
- C CENTER FORWARD

Equipment: The usual equipment of a player consists of a jersey or shirt, shorts, stockings, shin guards and boots. The soccer boots are the most important piece of their equipment and are made of lightweight, but durable material, and are low-cut just as those worn by backfield men in American football. Cleats are no longer than $\frac{3}{4}$ of an inch and are usually made of nylon or hard rubber.

The soccer balls used in international play are made of leather and must be between 27 and 28 inches in circumference and when inflated weigh between 14 and 16 ounces.



CLIVE TOYE General Manager



GORDON BRADLEY Coach



BARRY MAHAY No. 2 Fullback



JOHN YOUNG No. 4 Center Halfback



"Lolos" HASEKIDAS No. 5 Center Halfback



HORST MEYER No. 6 Halfback



JAIME DELGADO No. 7 Outside Right



CEYHAN YAZAR No. 8 Outside Right



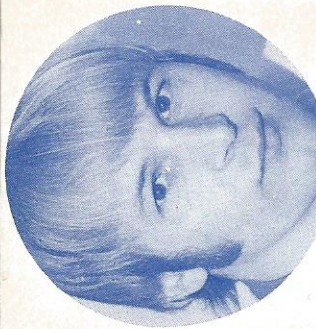
ANDY MATE No. 9 Center Forward



JORGE SIEGA No. 11 Outside Left



RANDY HORTON No. 16 Center Forward



SIGGY STRITZL No. 15 Halfback



KILRAKOS FITILAS No. 19 Halfback



JAN STEADMAN No. 20 Fullback





Dragan says:

Tonite we open the season with the Cosmos — some say they may be weak because they are an expansion team . . . Last year's championship was played between 1970's expansion teams.

Their coach is no stranger to our fans, he played for the New York Generals, a very rugged type player — hardest tackler on the club . . . so we know what to expect from his team.

Many of the Cosmos players were in 1967 and 1968 with the N.Y. Generals — Barry Mahy, fullback — as a midfielder in 1967 he scored eight goals and two assists; Jan Steadman is young but a good fullback; and Jorge Siega is probably only second to our "Casey" as a left winger.

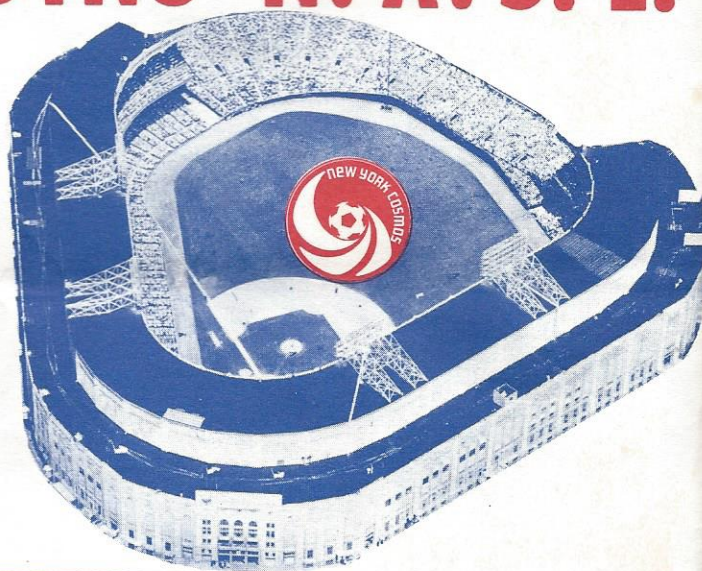
I know our boys will be working hard to please your loyalty with a win, we have worked hard this spring for tonite. If you'll turn this page, you can see the Cosmos photos.



NEW YORK JOINS N.A.S.L.



NEW COSMOS
HOSTS N.A.S.L.
AT HISTORIC
YANKEE
STADIUM



phone: 231-7100

MARTIN & ASSOCIATES



REALTORS

For your Industrial and Commercial Real Estate needs,

Put more

PRO

in your game
with equipment by



"THE MARK OF A PRO"

RAWLINGS SPORTING GOODS CO.

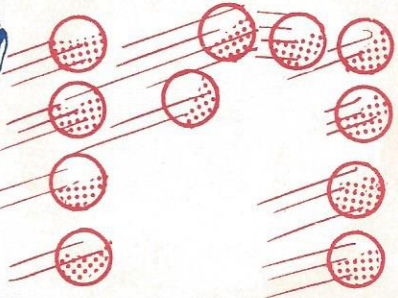
2300 Delmar Blvd., St. Louis, Mo. 63166

A subsidiary of A-T-O Inc.

AMBASSADORS - WELCOME FROM ALL OF US TO BUSCH MEMORIAL STADIUM AND ACTION . . .

DRAGAN POPOVICH

Now Number



1970 ALL-STAR



BORN IN YUGOSLAVIA

PREMIER MID-
FIELDER AND
STARS' ASSIST-
ANT COACH



AS A JUNIOR WITH RED STAR OF
BELGRADE IN 1959 HE LED HIS
TEAM TO THE CHAMPIONSHIP



"UP AND AT 'EM"



**BEST
FOR
THE
HOME
TEAM!**



Serve your family high energy super-rich Pevely Milk everyday at every meal.

Now in the new easy-to-handle one gallon plastic jug.

(No more fumbles!)

PEVELY

The name to look for when you want the very best.

TODAY'S REFEREE
Mike Wurtz - Milwaukee



"MEET TODAY'S TEAM"

ST. LOUIS STARS

| No. | Player | Position |
|-----|-------------------|----------|
| 0 | Miguel De Lima | G |
| 2 | Mike Kalicanin | FB |
| 4 | Chris Werstein | FB |
| 5 | Joe Puls | FB |
| 6 | Paul Pisani | HB |
| 7 | Larry Hausmann | HB |
| 8 | Pat McBride | FWD |
| 9 | Jim Leeker | FWD |
| 10 | John Mueller | FWD |
| 11 | Casey Frankiewicz | OL |
| 12 | Tom Bokern | FWD |
| 13 | Darrell Smith | FWD |
| 14 | Ed. Neusel | FB |
| 15 | Steve Frank | FB |
| 16 | Gary Rensing | HB |
| 17 | Dragan Popovic | HB |
| 18 | John Pisani | FWD |
| 19 | Jack Galmiche | FWD |
| 31 | Joe Right | G |

Coach: George L. Meyer

NEW YORK COSMOS

| No. | Player | Position |
|-----|--------------------|----------|
| 1 | Conrad Kornek | G |
| 2 | Barry Mahay | FB |
| 3 | Charles McCully | HB |
| 4 | John Young | CHB |
| 5 | Theodore Hasekidas | CHB |
| 6 | Horst Meyer | HB |
| 7 | Jaime Delgado | OR |
| 8 | Ceyhan Yazar | OR |
| 9 | Andy Mate | CF |
| 11 | Jorge Siega | OL |
| 12 | Radi Mitrovic | CF |
| 15 | Siggy Stritzl | HB |
| 16 | Randy Horton | CF |
| 19 | Kilrakos Fitilas | HB |
| 20 | Jan Steadman | FB |
| 21 | Emanuel Kofie | G |
| 24 | Rudolph Pearce | FB |

Coach: Gordon Bradley

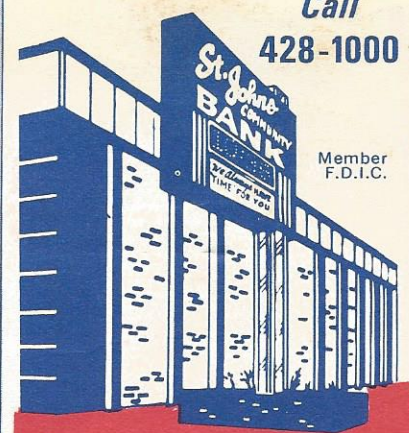
Use Your Master Charge For Tickets



St. Johns is the **SOLID PLACE TO BANK**

The wide-awake bank makes it all so easy.

Call 428-1000



ST. JOHNS COMMUNITY BANK

8924 St. Charles Road



Use Your MASTER CHARGE Card

SPORTS NEWS - KMOX Radio 8:50 a.m. Mon - Fri.

Your Host May 8, 1971 will be Pat McBride