

**1978**  
**Boston**  
**Lobsters**  
***Media Guide***

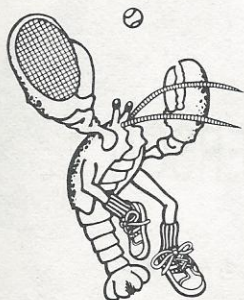
**Price \$2.00**



Lobsters' President Robert Kraft and Player/Coach Roy Emerson

PHOTO CREDITS: Cover: WTT/Todd Friedman; inside front cover, pages 2, 3, 5, 6, inside back cover: Carol Newsom; page 8: Kevin Alexander.

Written and Compiled by Debra K. Paborsky



# The Boston Lobsters

One Boston Place  
Boston, MA 02108  
(617) 227-8205

HOME ARENA:

Walter Brown Arena  
285 Babcock Street  
Boston, MA 02215

BETSY HICKEY: MEDIA CONTACT  
(617) 581-7864 - home

ROBERT K. KRAFT ..... PRESIDENT  
RICHARD P. MORSE ..... TREASURER  
JOHN H. SCHWARZ ..... VICE PRESIDENT - EXECUTIVE DIRECTOR  
JW WILSON ..... GENERAL MANAGER  
ROY EMERSON ..... PLAYER/COACH  
ANDREW J. JICK ..... DIRECTOR OF OPERATIONS  
BETSY R. HICKEY ..... DIRECTOR OF PUBLIC RELATIONS  
DEBRA K. PABORSKY ..... PUBLIC RELATIONS  
RICHARD KARELITZ ..... COMPTROLLER  
JOSEPH RUOCCO ..... ASSISTANT COMPTROLLER  
JOAN BIRD ..... SECRETARY  
JOYCE SIMMS ..... SALES SECRETARY  
DOUGLAS MILLER ..... TEAM TRAINER  
ROBERT LEACH, M.D. .... TEAM PHYSICIAN

PRACTICE SITE: Northmeadow Tennis Club  
Tewksbury, MA

TEAM COLORS: Red and White

COURT SURFACE: Sporteze

TV COVERAGE: WSBK-TV 38

HOTEL: Howard Johnson's Motor Lodge  
777 Memorial Drive  
Cambridge, MA



# ROY "EMMO" EMERSON

BORN: November 3, 1936  
BIRTHPLACE: Blackbutt, Queensland, Australia  
RESIDENCE: Newport Beach, CA  
HEIGHT: 6' 0"  
WEIGHT: 185 lbs.  
PLAYS: Righthanded  
STYLE: Serve and volley

## WORLD TEAM TENNIS RECORD

- 1977 - BOSTON LOBSTERS (Player/Coach)  
.517 GWA Doubles with Tony Roche - 6th in the league  
.516 GWA Mens total offense - 9th in the league  
The Boston Lobsters reached the playoffs by finishing 1st in the Eastern Division with a 35-9 (.795 pct.) win/loss record - the best in WTT.
- 1976 - none  
1975 - none  
1974 - Golden Gaters (Player/Coach)  
.599 GWA Singles  
.525 GWA Doubles  
The Golden Gaters reached the playoffs by finishing 2nd in the Pacific Section.

## CAREER HIGHLIGHTS

- 1978 - Womens Sports Foundation Celebrity Mixed Doubles champ with bowler Paula Sperber, Merv Griffin Celebrity-Pro champ with wife, Joy.
- 1977 - San Jose (Grand Prix) singles semi-finalist (1st singles competition after 3 years absence from pro tennis circuit)
- 1976 - Bristol Myers Mixed Doubles Champion with Francoise Durr
- 1973 - Won 5 WCT Doubles with Rod Laver
- 1967 - Australian, French, German singles Champion
- 1964 - Peak year, winning Australian, Wimbledon, U.S., and Canadian titles and losing only 4 out of 30 tournaments
- 1961-67 - Won every "Big Four" tournament at least twice;  
Wimbledon: 1964, 65  
U.S. Open: 1961, 64  
French: 1963, 64  
Australian: 1961, 1963-67 (six years)
- Emerson has won every major singles and doubles title at least once, and currently holds more titles than any other player. He holds a record for playing on 8 winning Davis Cup teams (Australia).

## LOBSTER TALES

One of the greatest tennis players in the history of the game . . . Emmo developed under the guidance of Harry Hopman during the great Australian Era from 1950-67 . . . always one of the fittest players in the game . . . known for discipline and stamina during important matches . . . competitive spirit matched only by enthusiasm for having a good time . . . returned to the circuit after spending three years promoting Laver/Emerson tennis camps . . . married to Joy, and they have a son Antony (14) and a daughter, Heidi (12).



# MARTINA NAVRATILOVA

BORN: October 18, 1956  
BIRTHPLACE: Prague, Czechoslovakia  
RESIDENCE: Dallas, Texas  
HEIGHT: 5' 7½"  
WEIGHT: 140 lbs.  
PLAYS: Lefthanded  
STYLE: Fastest women's serve  
Serve and volley  
RANKING: #2 Internationally (Women's Tennis Assoc.)

## WORLD TEAM TENNIS RECORD

### 1977 - BOSTON LOBSTERS

- .633 GWA Singles - #1 in the league
- .658 GWA Doubles with Greer Stevens - #1 in the league
- .640 GWA Women's total offense - #1 in the league

### 1976 - Cleveland Nets

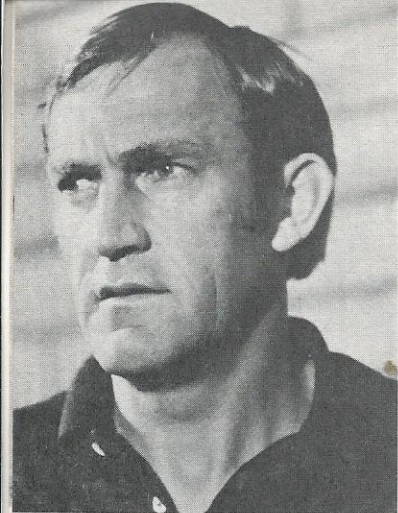
- .534 GWA Singles - #3 in the league
- .547 GWA Doubles with Wendy Overton

## CAREER HIGHLIGHTS

- 1978 - Won 7 consecutive Virginia Slims tournaments at Washington, Houston, Los Angeles, Chicago, Seattle, Detroit, and Kansas City, defeating King (twice), Stove (twice), Casals, Fromholtz, and Goolagong; also reached the semis at Boston and the quarters at Dallas. Won 1978 Virginia Slims Championship. Teamed with Billie Jean King, they won five doubles titles and the 1978 Bridgestone Doubles championship (Top 8 Virginia Slims teams)
- 1977 - Wimbledon singles quarter-finalist, doubles finalist with Betty Stove  
U.S. Open singles finals, doubles champion with Stove  
Wyler's Doubles champ with Stove, Phoenix Doubles champ with King, Women's Tennis Classic champ, singles finalist at Japanese Invitational . . . Colgate Series Round Robin . . . L'Eggs World Series Finalist  
Virginia Slims wins at Washington, Minnesota, Houston and Detroit . . . 3rd place finish in the Virginia Slims Championship
- 1976 - Wimbledon singles semi-finalist  
L'Eggs World Series semi-finalist  
Wimbledon Doubles Champ with Chris Evert
- 1975 - Australian Open - finalist  
French Open - finalist  
Italian Open - finalist  
Virginia Slims Championship - finalist  
U.S. Open - semi-finalist
- 1974 - Italian Open - finalist

## LOBSTER TALES

Martina came to the Lobsters last year after playing for Cleveland in 1976 . . . 1978 has been Martina's best year to date, winning 7 consecutive Virginia Slims titles and the Slims Championship - the first jewel in the triple crown of women's tennis . . . A powerful lefty, Martina's 91 m.p.h. serve is the fastest in women's tennis . . . An outstanding athlete, she reached the finals of the women's Superstars . . . Single, Martina often travels with her toy poodle Racquet.



# ANTHONY (TONY) DALTON ROCHE

**BORN:** May 17, 1945  
**BIRTHPLACE:** Wagga Wagga, Australia  
**RESIDENCE:** Sydney, Australia  
**HEIGHT:** 5' 10"  
**WEIGHT:** 175 lbs.  
**PLAYS:** Lefthanded  
**STYLE:** Serve and volley; one of the best backhands in tennis.

## WORLD TEAM TENNIS RECORD

- 1977 - BOSTON LOBSTERS
  - .547 GWA Singles - #3 in the league
  - .517 GWA Doubles with Emerson - #6 in the league
- 1976 - Phoenix Racquets Player/Coach
  - .514 GWA Singles
  - .524 GWA Doubles with Pattison
  - .520 GWA Mixed with Shaw
- 1975 - Phoenix Racquets Player/Coach
  - .542 GWA Doubles with Fairlie
- 1974 - Denver Racquets Player/Coach (Inaugural Season WTT Champions\*)
  - .546 GWA Doubles with Pattison
  - .552 GWA Mixed with Shaw

\*Coach-of-the-Year

## CAREER HIGHLIGHTS

- 1978 - Member of the Australian Davis Cup team and Aetna World Cup team
  - South Pacific Classic finalist
  - West Coast Hitachi Classic quarter-finalist
  - Australian Indoor quarter-finalist, doubles champ with John Newcombe
  - WCT Tournament of Champions - Las Vegas
- 1977 - Member of the Champion Australian Davis Cup team and Aetna World Cup team
  - New South Wales Open Champ
  - U.S. Pro Indoors Doubles semi-finalist with Ross Case
  - WCT Top 8
- 1976 - Wimbledon Mixed doubles champ with Francoise Durr
  - Wimbledon Round of 16 (lost to Vilas in 5 sets)
  - Australian Open Doubles champ with Arthur Ashe
- 1975 - WCT Blue Group - #28
  - Wimbledon semi-finalist
- 1966-74 - **SINGLES:** Italian Champ 1966, r/u 65/67; French Champ 1966, r/u 65/67; Wimbledon r/u 1968, quarter-finals 66/70; U.S. Open r/u 1969/70, semis 1974; Australian quarter-finals 1964/66, semis 65/67/69/70; Australian Junior Champ 1964
- DOUBLES:** Wimbledon Champ 1965/68/69/70/74; U.S. Open Champ 1970; Italian Champ 1971, r/u 1964; French Champ 1965/67; Australian Champ 1965/67/71

## LOBSTER TALES

Married to Sue and they have two daughters: Kelly (3) and Jaclyn (8 months) . . . tennis elbow plagued Roche for three years until cured in July of 1973 by a faith healer in the Philippines . . . he has had no re-occurring problems since that time . . . 5 time winner of Wimbledon doubles with his regular partner and fellow Aussie John Newcombe . . . twice ranked #2 in the world behind Rod Laver . . . one of the first 8 players signed by WCT in 1968 . . . 1974 Coach-of-the-Year in WTT for leading the Denver Racquets to the Championship title of that inaugural season . . . he played on 4 winning WTT teams.



# GREER "CAT" STEVENS

**BORN:** February 15, 1957  
**BIRTHPLACE:** Pietermaritzburg, South Africa  
**RESIDENCE:** Pietermaritzburg, South Africa  
**HEIGHT:** 5' 6"  
**WEIGHT:** 124 lbs.  
**PLAYS:** Righthanded  
**STYLE:** Serve and volley, incredibly powerful  
**RANKING:** #1 South Africa  
#12 Internationally (Women's Tennis Assoc.)

## WORLD TEAM TENNIS RECORD

### 1977 - BOSTON LOBSTERS

- .658 GWA Doubles with Martina Navratilova - #1 in the league
- .607 GWA Women's total offense - #2 in the league (behind Navratilova)
- .543 GWA Mixed with Mike Estep

### 1976 - BOSTON LOBSTERS

- .400 GWA Women's singles
- .467 GWA Doubles with Pam Teeguarden
- .530 GWA Mixed with Mike Estep - #4 in the league

### 1975 - BOSTON LOBSTERS (2nd half)

- .515 GWA Singles
- .523 GWA Doubles with Wendy Turnbull
- .607 GWA Mixed with Ion Tiriac

## CAREER HIGHLIGHTS

- 1978 - Virginia Slims singles quarter-finalist at Detroit and Washington, semi-finalist at Los Angeles; doubles finalist at Los Angeles with Pam Teeguarden, finalist at Houston and semi-finalist at Detroit with Mona Guerrant qualifying for the Bridgestone Double Championship Tournament (Top 8 Slims Teams)
- 1977 - Virginia Slims singles win over Betty Stove, JoAnne Russell, Wendy Turnbull, Kerry Reid, Kathy May . . . reaching 2 quarter-finals. Virginia Slims doubles with Kerry Reid reached two semis, 1 quarter, 1 final and championship in San Francisco.  
Wimbledon - singles round of 16 (lost to Evert), mixed doubles champ with Bob Hewitt.  
U.S. Open doubles quarters with Reid, Mixed doubles semi-finalist with Bob Hewitt.
- 1976 - Wimbledon mixed doubles semi-finalist with Bob Hewitt; Eastbourne Invitational quarter-finalist; WTA Avon Futures, McAllen Tournament Singles Champ; Border Lawn Tennis Singles Champ; Virginia Slims wins over Durr, Overton, Holladay, and Cuypers.
- 1975 - **SINGLES:** quarter-finalist at U.S. Open, finalist at 21 & Under Pepsi Cola at Forest Hills, Semi-finalist at Wimbledon 21 & Under, Surbiton Champ, Chichester Champ, South African Federation Cup representative.  
**DOUBLES:** Surbiton champ, Chichester finalist, Beckenham champ, Mixed doubles champ - 21 & Under Pepsi Cola at Forest Hills.

## LOBSTER TALES

The "Cat" received her nickname from former Lobster Player/Coach Ion Tiriac, because of her tenacious style of play and after the rock singer of the same name . . . Greer was voted South African Junior Sportsman of the Year for 1975, WTT and Tennis Magazine Female Rookie of the Year in 1976 . . . She is currently ranked #1 in South Africa (for the first time in her career) . . . she is considered to be one of the best young players in women's tennis . . . Greer is engaged to fellow countryman Kevin Leo-Smith.



# MICHAEL STEVENS ESTEP

BORN: July 19, 1949  
BIRTHPLACE: Dallas, Texas  
RESIDENCE: New York City, New York  
HEIGHT: 5' 8"  
WEIGHT: 155 lbs.  
PLAYS: Righthanded  
STYLE: Aggressive hard hitter; effective topspin forehand

## WORLD TEAM TENNIS RECORD

- 1977 - BOSTON LOBSTERS  
.543 GWA Mixed with Greer Stevens - #3 in the league  
.511 GWA Mens total offense - #10 in the league
- 1976 - BOSTON LOBSTERS  
.467 GWA Doubles with John Alexander  
.530 GWA Mixed with Greer Stevens - #4 in the league
- 1975 - none
- 1974 - Toronto/ Buffalo Royals  
.538 GWA Singles  
.534 GWA Doubles  
.505 GWA Mixed

## CAREER HIGHLIGHTS

- 1977 - U.S.A.-U.S.S.R. Weisman Cup Series in Moscow
- 1976 - Wimbledon doubles quarter-finals with Tom Gorman, Longwood U.S. Pro semi-finals with John Alexander, Forest Hills last 16 doubles, Khartoum Doubles Champ, Cairo Doubles Champ, Cologne Cup Doubles champ with Colin Dowdeswell, ATP American Airlines singles round 16  
Nottingham defeated Adriano Panatta  
Newport R.I. (Miller Hall of Fame) singles semi-finals  
Albuquerque singles and doubles final
- 1975 - WCT Red Group wins over Vijay Amritraj, John Alexander, Phil Dent, Bob Lutz, Stan Smith - #10 overall WCT  
Wimbledon singles final 16  
Longwood U.S. Pro doubles finals with John Andrews losing to Ramirez/Gottfried in 3 sets.

## LOBSTER TALES

Mike married Barbara Hunter, an NBC Sports commentator, in November . . . nicknamed 'mighty mouse' in 1967 at Sunshine Cup because of his determined attitude and ability to scramble back to win after being down several match points . . . plays tournament backgammon and bridge . . . political science major at Rice in Houston . . . 4 time All-American at Rice . . . step-father Vice President of T Bar M Tennis ranch, and father played amateur tennis.



# TERRY ANN HOLLADAY

BORN: November 22, 1955  
BIRTHPLACE: Charlotte, North Carolina  
RESIDENCE: La Jolla, California  
HEIGHT: 6' 0"  
WEIGHT: 155 lbs.  
STYLE: Lefthanded; two handed backhand  
RANKING: #21 (Women's Tennis Association)

## WORLD TEAM TENNIS RECORD

1977 - Golden Gaters  
    .485 GWA Women's doubles (7th in the league)  
    .469 GWA Women's doubles with Francoise Durr  
    .480 GWA Total offense (14th in the league)  
1976 - San Diego Friars  
    .427 GWA Women's singles  
    .441 GWA Women's doubles  
1975 - none  
1974 - Minnesota Buckskins  
    .480 GWA Mixed doubles

## CAREER HIGHLIGHTS

1978 - Played on the Virginia Slims and Avon Futures Circuits  
1977 - Virginia Slims finalist at Dallas; Wimbledon singles final round of 16  
1976 - Virginia Slims semi-finalist at Detroit and San Francisco; U.S. Open singles final round of 16; Colgate Inaugural semi-finalist; member of the United States Wightman Cup team.  
1975 - British Hard Courts finalist; Chichester International finalist; U.S. Clay Courts doubles semi-finalist.

## LOBSTER TALES

Terry was drafted by the Lobsters in the March WTT draft and was signed to replace the injured Greer Stevens in May of '78 . . . She is from a tennis family. Her brother John was her teammate on the 1977 Golden Gaters and is currently playing on the USTA/Watch circuit . . . She works extremely hard on her tennis game (prior to signing with the Lobsters she was in training for Wimbledon) . . . When she isn't playing, she is addicted to the sun, sailing and the beach . . . Her big lefty kick serve and strong volleys are perfect for WTT's Sporteze surface.



# UNA KEYES

**BORN:** April 7, 1954  
**BIRTHPLACE:** Norwood, Massachusetts  
**RESIDENCE:** Brookline, Massachusetts  
**HEIGHT:** 5' 7½"  
**WEIGHT:** 120 lbs.  
**PLAYS:** Lefthanded  
**RANKING:** #1 in New England

## WORLD TEAM TENNIS RECORD

1978 - BOSTON LOBSTERS (1st year in the league)

## CAREER HIGHLIGHTS

1978 - Played on the Avon Futures Circuit

1977 - Ranked #1 in New England in women's singles, women's doubles with Marian Prince and mixed doubles with Mike Beautyman.

1976 - Ranked #2 in New England

## LOBSTER TALES

Una signed her first WTT contract with the Lobsters on her 24th birthday, April 7, 1978 . . . A graduate of the University of Florida at Gainesville, she played #1 and #2 singles on the women's varsity tennis team . . . A top competitor in New England, she achieved the "hat trick" of rankings in '77, taking top honors in all three categories: women's singles, women's doubles and mixed doubles . . . Una is also a teaching pro at Wimbledon 109 in Dover, Massachusetts.

# THE BOSTON LOBSTERS COMPLETE WIN/LOSS AND ATTENDANCE RECORD

1974

|                              |          |           |      |              |
|------------------------------|----------|-----------|------|--------------|
| 5/ 8—at Philadelphia         | (25-33)  | 0-1       | .000 | ----         |
| 5/ 9—HAWAII                  | (33-25)  | 1-1       | .500 | 3574         |
| 5/12—DETROIT                 | (24-29)  | 1-2       | .333 | 2149         |
| 5/14—at Detroit              | (22-33)  | 1-3       | .250 | ----         |
| 5/15—PITTSBURGH              | (31-22)  | 2-3       | .400 | 2129         |
| 5/16—at Toronto              | (37-22)  | 3-3       | .500 | ----         |
| 5/17—at New York             | (31-28)  | 4-3       | .571 | ----         |
| 5/21—BALTIMORE               | (22-27)  | 4-4       | .500 | 2201         |
| 5/23—MINNESOTA               | (25-24)  | 5-4       | .556 | 1365         |
| 5/25—CHICAGO                 | (25-16)  | 6-4       | .600 | 2243         |
| 5/29—at Florida              | (20-20f) | 6-5       | .545 | ----         |
| 5/30—CLEVELAND               | (25-29)  | 6-6       | .500 | 2318         |
| 6/ 2—TORONTO/BUFFALO         | (28-27)  | 7-6       | .538 | 1718         |
| 6/ 4—PITTSBURGH              | (18-31)  | 7-7       | .500 | 1941         |
| 6/ 6—DETROIT                 | (28-27)  | 8-7       | .533 | 2154         |
| 6/ 9—BALTIMORE               | (25-22)  | 9-7       | .563 | 2108         |
| 6/10—at Buffalo              | (30-18)  | 10-7      | .588 | ----         |
| 6/11—at Chicago              | (23-22)  | 11-7      | .611 | ----         |
| 6/13—SAN FRANCISCO           | (30-18)  | 12-7      | .632 | 2328         |
| 6/16—PHILADELPHIA            | (24-33)  | 12-8      | .600 | 4116         |
| *** WIMBLEDON ***            |          |           |      |              |
| 7/ 6—at Cleveland            | (19-22)  | 12-9      | .571 | ----         |
| 7/ 7—NEW YORK                | (25-21)  | 13-9      | .591 | 2421         |
| 7/ 9—at Pittsburgh           | (27-29)  | 13-10     | .565 | ----         |
| 7/10—at Minnesota            | (28-16)  | 14-10     | .583 | ----         |
| 7/11—at Denver               | (19-25)  | 14-11     | .560 | ----         |
| 7/14—TORONTO/BUFFALO         | (24-28)  | 14-12     | .538 | 2341         |
| 7/16—at New York             | (18-22)  | 14-13     | .519 | ----         |
| 7/19—at San Francisco        | (25-28)  | 14-14     | .500 | ----         |
| 7/20—at Los Angeles          | (24-20)  | 15-14     | .517 | ----         |
| 7/22—at Hawaii               | (22-23)  | 15-15     | .500 | ----         |
| 7/24—at Houston              | (19-30)  | 15-16     | .484 | ----         |
| 7/26—at Baltimore            | (20-29)  | 15-17     | .469 | ----         |
| 7/28—PHILADELPHIA            | (21-24)  | 15-18     | .455 | 4116         |
| 7/30—LOS ANGELES             | (23-18)  | 16-18     | .471 | 3034         |
| 8/ 1—CLEVELAND               | (25-22)  | 17-18     | .486 | 3126         |
| 8/ 3—at Cleveland            | (21-30)  | 17-19     | .472 | ----         |
| 8/ 4—DENVER                  | (21-27)  | 17-20     | .459 | 2244         |
| 8/ 7—at Baltimore            | (23-21)  | 18-20     | .474 | ----         |
| 8/ 8—FLORIDA                 | (26-21)  | 19-20     | .487 | 2647         |
| 8/10—at Pittsburgh           | (11-30)  | 19-21     | .475 | ----         |
| 8/11—NEW YORK                | (22-28)  | 19-22     | .463 | 2464         |
| 8/12—at Philadelphia         | (23-29)  | 19-23     | .452 | ----         |
| 8/15—HOUSTON                 | (25-31)  | 19-24     | .442 | 3676         |
| 8/16—at Detroit              | (18-31)  | 19-25     | .432 | ----         |
| Lobsters 1st half record:    | 12 wins  | 8 losses  | .600 | (20 matches) |
| Lobsters 2nd half record:    | 7 wins   | 17 losses | .292 | (24 matches) |
| Lobsters 1974 season record: | 19 wins  | 25 losses | .432 | (44 matches) |

|                  |                  |        |              |              |
|------------------|------------------|--------|--------------|--------------|
| Paid attendance: | Boston 1st half: | 30,344 | 2334 average | (13 matches) |
|                  | Boston 2nd half: | 26,060 | 2896 average | ( 9 matches) |
|                  | total            | 56,404 | 2564 average | (22 matches) |

# THE BOSTON LOBSTERS COMPLETE WIN/LOSS AND ATTENDANCE RECORD

1975

|                           |         |       |      |      |
|---------------------------|---------|-------|------|------|
| 5/ 3—at Pittsburgh        | (24-25) | 0-1   | .000 | ---- |
| 5/ 6—vs. Los Angeles (NY) | (26-33) | 0-2   | .000 | ---- |
| 5/ 9—vs. Phoenix (SD)     | (19-25) | 0-3   | .000 | ---- |
| 5/10—vs. Gaters (SD)      | (24-30) | 0-4   | .000 | ---- |
| 5/11—vs. Indiana (SD)     | (22-28) | 0-5   | .000 | ---- |
| 5/15—at Cleveland         | (21-23) | 0-6   | .000 | ---- |
| 5/18—at Pittsburgh        | (20-26) | 0-7   | .000 | ---- |
| 5/22—NEW YORK             | (12-25) | 0-8   | .000 | 2191 |
| 5/23—INDIANA (PRO)        | (27-17) | 1-8   | .111 | 4317 |
| 5/23—NEW YORK (PRO)       | (21-27) | 1-9   | .100 | 4317 |
| 5/24—CLEVELAND            | (21-27) | 1-10  | .091 | 352  |
| 5/25—NEW YORK             | (23-29) | 1-11  | .083 | 1581 |
| 5/26—at Hawaii            | (29-27) | 2-11  | .154 | ---- |
| 5/28—at New York          | (18-25) | 2-12  | .143 | ---- |
| 5/31—at Pittsburgh        | (20-26) | 2-13  | .133 | ---- |
| 6/ 1—vs. Indiana (Oak)    | (24-23) | 3-13  | .188 | ---- |
| 6/ 3—vs. Indiana (Phoe)   | (19-26) | 3-14  | .176 | ---- |
| 6/ 4—vs. Phoenix (LA)     | (26-20) | 4-14  | .222 | ---- |
| 6/ 5—vs. New York (LA)    | (21-23) | 4-15  | .211 | ---- |
| 6/ 6—vs. San Diego (LA)   | (24-21) | 5-15  | .250 | ---- |
| 6/ 7—vs. San Diego (Oak)  | (31-23) | 6-15  | .286 | ---- |
| 6/10—at Golden Gate       | (18-28) | 6-16  | .273 | ---- |
| 6/13—vs. Pittsburgh (Ind) | (21-27) | 6-17  | .261 | ---- |
| 6/14—vs. Gaters (Ind)     | (21-24) | 6-18  | .250 | ---- |
| *** WIMBLEDON ***         |         |       |      |      |
| 7/ 8—LOS ANGELES          | (29-25) | 7-18  | .280 | 2108 |
| 7/ 9—SAN DIEGO (PRO)      | (27-28) | 7-19  | .269 | 2358 |
| 7/11—at New York          | (19-29) | 7-20  | .259 | ---- |
| 7/14—vs. Cleveland (LA)   | (23-24) | 7-21  | .250 | ---- |
| 7/16—at Indiana           | (27-26) | 8-21  | .276 | ---- |
| 7/17—at Cleveland         | (26-20) | 9-21  | .300 | ---- |
| 7/18—HAWAII               | (31-17) | 10-21 | .323 | 2562 |
| 7/19—vs. Hawaii (St. L)   | (23-17) | 11-21 | .344 | ---- |
| 7/20—SAN DIEGO            | (21-26) | 11-22 | .333 | 1029 |
| 7/22—SAN DIEGO            | (27-21) | 12-22 | .353 | 1188 |
| 7/24—CLEVELAND            | (28-26) | 13-22 | .371 | 1018 |
| 7/26—at Cleveland         | (28-17) | 14-22 | .389 | ---- |
| 7/27—at New York          | (22-26) | 14-23 | .378 | ---- |
| 7/29—at Golden Gate       | (25-24) | 15-23 | .395 | ---- |
| 8/ 1—INDIANA              | (31-12) | 16-23 | .410 | 864  |
| 8/ 2—PITTSBURGH           | (21-24) | 16-24 | .400 | 479  |
| 8/ 2—HAWAII (HFD)         | (28-23) | 17-24 | .415 | 2492 |
| 8/ 3—SAN DIEGO            | (29-19) | 18-24 | .429 | 2042 |
| 8/ 6—at Phoenix           | (25-30) | 18-25 | .419 | ---- |
| 8/ 8—vs. Los Angeles (SD) | (25-21) | 19-25 | .432 | ---- |
| 8/ 9—vs. Phoenix (SD)     | (30-21) | 20-25 | .444 | ---- |
| 8/12—at Indiana           | (25-26) | 20-26 | .435 | ---- |

## \* PLAYOFFS \*

|                     |         |             |     |
|---------------------|---------|-------------|-----|
| 8/17—at New York    | (25-24) | elimination |     |
| 8/18—vs. Pittsburgh | (16-25) | playoff     | 912 |
| 8/19—at Pittsburgh  | (14-23) | playoff     |     |

|                              |         |           |      |              |
|------------------------------|---------|-----------|------|--------------|
| Lobsters 1st half record:    | 6 wins  | 14 losses | .391 | (24 matches) |
| Lobsters 2nd half record:    | 14 wins | 8 losses  | .636 | (22 matches) |
| Lobsters 1975 season record: | 20 wins | 26 losses | .435 | (46 matches) |

|                  |                  |        |              |              |
|------------------|------------------|--------|--------------|--------------|
| Paid attendance: | Boston 1st half: | 12,758 | 2552 average | ( 5 matches) |
|                  | Boston 2nd half: | 16,140 | 1614 average | (10 matches) |
|                  | total            | 28,898 | 1927 average | (15 matches) |

note: 18 separate admissions—1710 average. Not all listed above due to gate received for 4 matches excluding Lobsters.

# THE BOSTON LOBSTERS COMPLETE WIN/LOSS AND ATTENDANCE RECORD

1976

|                              |           |           |      |              |
|------------------------------|-----------|-----------|------|--------------|
| 5/ 1—at Pittsburgh           | (14-31)   | 0-1       | .000 | ----         |
| 5/ 4—NEW YORK                | (20-32)   | 0-2       | .000 | 2488         |
| 5/ 6—LOS ANGELES             | (23-25)   | 0-3       | .000 | 3376         |
| 5/ 8—INDIANA                 | (29-28)   | 1-3       | .250 | 1401         |
| 5/11—SAN DIEGO               | (29-21)   | 2-3       | .400 | 2310         |
| 5/12—at Indiana              | (26-24)   | 3-3       | .500 | 1427         |
| 5/14—NEW YORK (HFD)          | (20-30)   | 3-4       | .428 | 4394         |
| 5/17—PITTSBURGH              | (30-27)   | 4-4       | .500 | 1427         |
| 5/18—GOLDEN GATE             | (24-32)   | 4-5       | .444 | 1433         |
| 5/20—at Hawaii               | (28-21)   | 5-5       | .500 | -----        |
| 5/22—at Los Angeles          | (20-23)   | 5-6       | .455 | -----        |
| 5/23—at Phoenix              | (20-25)   | 5-7       | .417 | -----        |
| 5/27—PITTSBURGH              | (25-22)   | 6-7       | .461 | 2113         |
| 5/28—at Cleveland            | (27-21)   | 7-7       | .500 | -----        |
| 6/ 1—CLEVELAND               | (17-29)   | 7-8       | .467 | 1147         |
| 6/ 2—INDIANA (HFD)           | (30-26)   | 8-8       | .500 | 1703         |
| 6/ 5—at New York             | (19-25)   | 8-9       | .477 | -----        |
| 6/ 6—at Indiana              | (24-26)   | 8-10      | .444 | -----        |
| 6/ 7—at Golden Gate          | (19-31)   | 8-11      | .421 | -----        |
| 6/ 8—at San Diego            | (19-32)   | 8-12      | .400 | -----        |
| 6/ 9—at Los Angeles          | (17-30)   | 8-13      | .381 | -----        |
| 6/11—HAWAII                  | (26-15)   | 9-13      | .410 | 2643         |
| 6/12—at Pittsburgh           | (18-29)   | 9-14      | .391 | -----        |
| *** WIMBLEDON ***            |           |           |      |              |
| 7/ 6—PHOENIX                 | (21-27)   | 9-15      | .375 | 3792*        |
| 7/ 7—PITTSBURGH (HFD)        | (22-30)   | 9-16      | .360 | 3973         |
| 7/ 9—at New York             | (31-22)   | 10-16     | .384 | -----        |
| 7/12—SAN DIEGO               | (31-20)   | 11-16     | .407 | 2786         |
| 7/14—INDIANA                 | (21-25)   | 11-17     | .393 | 2587         |
| 7/20—LOS ANGELES             | (25-24)   | 12-17     | .414 | 2873         |
| 7/22—at San Diego            | (28-22)   | 13-17     | .433 | -----        |
| 7/23—at Phoenix              | (25-29)   | 13-18     | .419 | -----        |
| 7/24—at Golden Gate          | (17-23)   | 13-19     | .406 | -----        |
| 7/26—at Hawaii (Seattle)     | (21-29)   | 13-20     | .394 | -----        |
| 7/28—CLEVELAND               | (21-31)   | 13-21     | .382 | 3579         |
| 7/31—at Cleveland            | (31-27)   | 14-21     | .400 | -----        |
| 8/ 2—GOLDEN GATE             | (29-20)   | 15-21     | .417 | 1747         |
| 8/ 5—HAWAII                  | (31-13)   | 16-21     | .432 | 2748         |
| 8/ 7—at Pittsburgh           | (13-28)   | 16-22     | .421 | -----        |
| 8/ 9—at New York             | CANCELLED |           |      |              |
| 8/10—NEW YORK                | (20-30)   | 16-23     | .410 | 2936         |
| 8/11—CLEVELAND (HFD)         | (27-24)   | 17-23     | .425 | 3818         |
| 8/12—PHOENIX                 | (20-29)   | 17-24     | .415 | 3626         |
| 8/13—at Indiana              | (23-28)   | 17-25     | .405 | -----        |
| 8/14—at Cleveland            | (27-21)   | 18-25     | .419 | -----        |
| Lobsters 1st half record:    | 9 wins    | 14 losses | .391 | (23 matches) |
| Lobsters 2nd half record:    | 9 wins    | 11 losses | .450 | (20 matches) |
| Lobsters 1976 season record: | 18 wins   | 25 losses | .419 | (43 matches) |

|                  |                        |        |              |              |
|------------------|------------------------|--------|--------------|--------------|
| Paid attendance: | Boston 1st half:       | 18,338 | 2038 average | ( 9 matches) |
|                  | Boston 2nd half:       | 26,674 | 2964 average | ( 9 matches) |
|                  | Hartford 1st/2nd half: | 13,888 | 3472 average | ( 4 matches) |
|                  | total                  | 58,900 | 2677 average | (22 matches) |

# THE BOSTON LOBSTERS COMPLETE WIN/LOSS AND ATTENDANCE RECORD

1977

|                              |         |      |       |       |
|------------------------------|---------|------|-------|-------|
| 4/29—at Phoenix (Atlanta)    | (27-18) | 1-0  | 1.000 | 5110  |
| 4/30—INDIANA (HFD)           | (27-23) | 2-0  | 1.000 | 1897  |
| 5/ 1—at Soviets (Binghamton) | (31-17) | 3-0  | 1.000 | 1218  |
| 5/ 4—SEA-PORT                | (26-29) | 3-1  | .750  | 1715  |
| 5/ 6—LOS ANGELES             | (30-12) | 4-1  | .800  | 2022  |
| 5/ 7—at Indiana              | (25-21) | 5-1  | .833  | 2122  |
| 5/10—SOVIETS                 | (31-17) | 6-1  | .857  | 1622  |
| 5/11—at Soviets (Reading)    | (25-21) | 7-1  | .875  | 1781  |
| 5/12—NEW YORK                | (29-25) | 8-1  | .889  | 3299  |
| 5/14—at New York (Nassau)    | (19-26) | 8-2  | .800  | 3554  |
| 5/17—CLEVELAND               | (28-16) | 9-2  | .818  | 3679  |
| 5/21—SAN DIEGO (HFD)         | (29-19) | 10-2 | .833  | 2414  |
| 5/25—at Cleveland (Pitt)     | (27-11) | 11-2 | .846  | 300   |
| 5/26—SOVIETS                 | (30-15) | 12-2 | .857  | 2327  |
| 5/30—GOLDEN GATERS           | (23-18) | 13-2 | .867  | 1879  |
| 6/ 1—PHOENIX                 | (24-17) | 14-2 | .875  | 4013* |
| 6/ 3—NEW YORK (HFD)          | (24-25) | 14-3 | .824  | 3290  |
| 6/ 5—at Sea-Port (Seattle)   | (28-12) | 15-3 | .833  | 2500  |
| 6/ 7—at Sea-Port (Portland)  | (30-14) | 16-3 | .842  | 250   |
| 6/ 8—at Los Angeles          | (28-18) | 17-3 | .850  | 4200  |
| 6/10—at San Diego            | (26-29) | 17-4 | .810  | 4100  |
| 6/11—at Golden Gaters        | (25-24) | 18-4 | .818  | 5415  |
| *****WIMBLEDON*****          |         |      |       |       |
| 7/ 5—INDIANA                 | (29-16) | 19-4 | .826  | 2474  |
| 7/ 6—CLEVELAND (HFD)         | (23-26) | 19-5 | .792  | 6118  |
| 7/ 8—at Cleveland (Columbus) | (30-21) | 20-5 | .800  | 4812  |
| 7/11—at Soviets (K.C., MO)   | (26-25) | 21-5 | .808  | 2483  |
| 7/12—SAN DIEGO               | (27-28) | 21-6 | .778  | 3484  |
| 7/14—GOLDEN GATERS           | (32-19) | 22-6 | .786  | 1897  |
| 7/17—NEW YORK                | (25-19) | 23-6 | .793  | 4013* |
| 7/19—SEA-PORT                | (28-20) | 24-6 | .800  | 2596  |
| 7/22—at New York             | (24-21) | 25-6 | .806  | 3148  |
| 7/24—at Indiana              | (25-22) | 26-6 | .813  | 2204  |
| 7/26—PHOENIX (HFD)           | (28-20) | 27-6 | .818  | 8924  |
| 7/28—LOS ANGELES             | (28-13) | 28-6 | .824  | 4013* |
| 7/30—at Cleveland            | (27-15) | 29-6 | .829  | 2152  |
| 8/ 3—at Golden Gaters        | (24-19) | 30-6 | .833  | 4149  |
| 8/ 4—at Phoenix              | (27-29) | 30-7 | .811  | 10500 |
| 8/ 5—at Los Angeles          | (23-25) | 30-8 | .789  | 6212  |
| 8/ 6—at San Diego            | (27-22) | 31-8 | .795  | 6315  |
| 8/ 8—at New York             | (28-24) | 32-8 | .800  | 7387  |
| 8/ 9—SOVIETS (HFD)           | (28-21) | 33-8 | .805  | 3482  |
| 8/10—INDIANA                 | (32-20) | 34-8 | .810  | 3571  |
| 8/12—at Indiana              | (19-22) | 34-9 | .791  | 2770  |
| 8/14—CLEVELAND               | (27-21) | 35-9 | .795  | 4013* |

\*Boston Sellout

## \* PLAYOFFS \*

|                   |         |   |
|-------------------|---------|---|
| 8/16—CLEVELAND    | (30-26) | Eastern Div. elimination                        |
| 8/18—at Cleveland | (20-21) | Eastern Div. elimination                        |
| 8/19—CLEVELAND    | (28-21) | Eastern Div. elimination—<br>Boston wins 2-1    |
| 8/20—NEW YORK     | (21-29) | Eastern Div. Championship                       |
| 8/22—at New York  | (26-29) | Eastern Div. Championship—<br>New York wins 2-0 |

|                              |         |          |      |              |
|------------------------------|---------|----------|------|--------------|
| Lobsters 1st half record:    | 18 wins | 4 losses | .818 | (22 matches) |
| Lobsters 2nd half record:    | 17 wins | 5 losses | .773 | (22 matches) |
| Lobsters 1977 season record: | 35 wins | 9 losses | .795 | (44 matches) |

|                  |                        |        |              |              |
|------------------|------------------------|--------|--------------|--------------|
| Paid attendance: | Boston 1st half:       | 20,566 | 2570 average | ( 8 matches) |
|                  | Boston 2nd half:       | 26,061 | 3258 average | ( 8 matches) |
|                  | Hartford 1st/2nd half: | 26,125 | 4353 average | ( 6 matches) |
|                  | Boston/Hartford:       | 72,742 | 3306 average | (22 matches) |

# THE BOSTON LOBSTERS

## ALL-TIME RECORDS: TEAM

Most wins, season: 35 (1977)  
Most losses, season: 26 (1975)  
Most home wins, season: 18 (1977)  
Most away wins, season: 17 (1977)  
Most home losses, season: 13 (1975)  
Most away losses, season: 14 (1976)  
Longest winning streak, season: 9 matches (July 14-August 3, 1977)  
Longest losing streak, season: 8 matches (May 3-May 23, 1975)  
Longest home winning streak, season: 8 matches (twice: May 6-June 1 & July 14-August 4, 1977)  
Longest home losing streak, season: 4 matches (May 6-May 22, 1975)  
Longest away winning streak, season: 7 matches (July 11-August 3, 1977)  
Longest away losing streak, season: 6 matches (June 5-June 12, 1976)  
Largest winning margin: 18 games (30-12 vs. Los Angeles—May 6, 1977)  
Largest losing margin: 19 games (11-30 at Pittsburgh—Aug. 10, 1974)  
Most games won in a match: 37 (37-22 at Toronto—May 6, 1974)  
Most games lost in a match: 28 (28-31 at New York—May 14, 1974)  
Least games lost in a match: 12 (30-12 vs. Los Angeles—May 6, 1977)  
Least games won in a match: 11 (11-30 at Pittsburgh—Aug. 10, 1974)  
Most games won in a season: 1155 (1977)  
Most games lost in a season: 1110 (1974)  
Least games won in a season: 1008 (1976)  
Least games lost in a season: 895 (1977)  
Most games in a match: 59 (twice: May 16, 1974 at Toronto—37-22 & May 17, 1974 at New York—31-28)  
Least games in a match: 39 (May 25, 1977 at Cleveland [Pitt.]—27-11)  
Most aces in a match, team: 9 (May 11, 1976 vs. San Diego)  
Most aces in a season, team: 167 (1974)  
Most double faults in a match, team: 18 (May 8, 1974 at Philadelphia)  
Most double faults in a season, team: 288 (1975)

## ALL-TIME RECORDS: INDIVIDUAL

Most aces in a set: 6 by John Alexander (July 12, 1976 vs. San Diego)  
Most aces in a match: 7 by John Alexander (July 12, 1976 vs. San Diego)  
Most aces in a season: 72 by John Alexander (1976)  
Most double faults in a set: 7 by Kerry Reid (May 10, 1975 vs. Gaters)  
Most double faults in a match: 7 by Kerry Reid (May 10, 1975 vs. Gaters)  
Most double faults in a season: 123 by Kerry Reid (1974)  
Women's singles:  
Most games won: 217 by Martina Navratilova (1977)  
Most sets won: 32 by Martina Navratilova (1977)  
Most consecutive wins: 17 by Martina Navratilova (1977)\*  
Women's doubles:  
Most games won, team: 237 by Martina Navratilova/Greer Stevens (1977)  
Most games won, individual: 261 by Martina Navratilova (1977)\*  
Most sets won, team: 36 by Martina Navratilova/Greer Stevens (1977)  
Most sets won, individual: 39 by Martina Navratilova (1977)  
Most consecutive wins: 21 by Martina Navratilova/Greer Stevens (1977)\*\*  
Men's singles:  
Most games won: 185 by Tony Roche (1977)  
Most sets won: 23 by Tony Roche (1977)  
Most consecutive sets: 6 by John Alexander (July 9-July 23, 1976)  
Men's doubles:  
Most games won, team: 199 by Bob Hewitt/Ion Tiriac (1975)  
Most games won, individual: 231 by Bob Hewitt (1975)  
Most sets won, team: 24 by Bob Hewitt/Ion Tiriac (1975)  
Most sets won, individual: 28 by Bob Hewitt (1975)  
Most consecutive sets: 6 (twice: Hewitt/Tiriac—July 27-Aug. 3, 1976 & Roche/Emerson—May 17-June 1, 1977)  
Mixed doubles:  
Most games won, team: 184 by Greer Stevens/Mike Estep (1976)  
Most games won, individual: 211 by Mike Estep (1976)  
Most sets won, team: 22 by Greer Stevens/Mike Estep (1976)  
Most sets won, individual: 24 by Mike Estep (1976)  
Most consecutive wins: 6 by Greer Stevens/Mike Estep (July 22-Aug. 3, 1977)

\*League Record

\*\*Ties League Record



# World Team Tennis Rosters

## 1978 Season

### BOSTON LOBSTERS



**The  
Boston  
Lobsters**

Roy Emerson\*  
Tony Roche  
Mike Estep  
Martina Navratilova  
Greer Stevens  
Terry Holladay  
Una Keyes

### LOS ANGELES STRINGS



Los Angeles Strings

Ilie Nastase\*  
Vijay Amritraj  
Ashok Amritraj  
Chris Evert  
Ann Kiyomura  
Stephanie Tolleson

### NEW YORK APPLES



Vitas Gerulaitis  
Ray Ruffels  
Fred Stolle\*  
Billie Jean King  
JoAnne Russell  
Julie Anthony

### SEATTLE CASCADES



Betty Stove  
Marita Redondo  
Brigitte Cuypers  
Tom Gorman\*  
Sherwood Stewart  
Chris Kachel

### ANAHEIM ORANGES



Mark Cox  
Cliff Drysdale\*  
Anand Amritraj  
Rosemary Casals  
Kathy Harter  
Francoise Durr

### GOLDEN GATERS



Virginia Wade  
Ilana Kloss  
Marise Kruger  
Frew McMillan\*  
Sandy Mayer  
Michael Wayman

### NEW ORLEANS NETS



Renee Richards  
Wendy Turnbull  
Helen Gourlay-Cawley  
John Lucas  
Marty Riessen\*  
Andrew Pattison

### SAN DIEGO FRIARS



Kerry Reid  
Mona Guerrant  
Janet Young  
Raz Reid  
Rod Laver\*  
Ross Case

### INDIANA LOVES



Diane Fromholtz  
Sue Mappin  
Tanya Harford  
Allan Stone\*  
John Whitlinger  
Geoff Masters

### PHOENIX RACQUETS



phoenix  
RACQUETS

Sue Barker  
Kristien Shaw  
Raynie Fox  
Syd Ball\*  
Butch Walts  
Dean Martin, Jr.

## PRESS CREDENTIALS

**BOSTON** - Press credentials and photographers passes for working press are available upon written request on a season's basis or by calling 227-8205 on a per-match basis.

Phones, telecopiers, programs, statistics and other information will be available at every match. Interviews will be arranged in designated areas at the conclusion of the match with players from both the home and visiting team members.

If you have a specific request or would like to arrange an interview in advance of a particular match, please contact Betsy Hickey.

**OTHER WTT CITIES** - 28 Matches are played away from Boston (including 6 at other New England cities). Match summaries via telephone or telecopier are available upon request. Press credentials for away games can be arranged through the Lobsters, prior to a given match.

**TICKETS** - A limited supply of tickets for Boston and other New England matches are reserved for non-working members of the media. Requests should be submitted at least 48 hours in advance of the match.

## WORLD TEAM TENNIS FORMAT

The match between two WTT teams consists of five sets plus overtime, if any. The order of play is doubles, singles, doubles, singles, and doubles. Home coach chooses events within the format.

## WORLD TEAM TENNIS SCORING

**GAME**—WTT uses the new simplified no-ad scoring. the first player or doubles team to reach 4 points wins the game. **SET**—You must win at least six games and be ahead by 2 games to win the set. At six games-all, a nine-point tie-breaker is played for the set. **MATCH**—The team which accumulates the most games at the end of five sets, plus overtime, if any, shall be declared the winner. **OVERTIME**—In the event the teams are tied in total games, a seven out of thirteen-point Super Tie-breaker shall be played to determine the winner. Any doubles combination is eligible to play; however, event must be the same as in the fifth set. All players are eligible for the Super Tie-breaker with substitution rules the same in a set. The winner shall receive a "win" in the standings, and the loser shall receive a loss in the standings.

## 1978 PLAYOFF FORMAT

The top four teams from each division will go into the playoffs. This year, only the first two rounds will be played before the U.S. Open (8/28-9/10) and the Championship will be played after the tournament. In the first round the #1 teams in each division will play the #4 teams and the #2 teams will play the #3 teams in a best 2 out of 3 series. The remaining four teams will face each other for the division championship title, also in a best 2 of 3 series. The World Team Tennis Championship round will be played after the completion of the U.S. Open. The two remaining teams will face each other in a best 3 of 5 series.

# World Team Tennis Directory

## **WORLD TEAM TENNIS LEAGUE HEADQUARTERS**

7733 Forsyth Blvd.-Suite 1838  
Clayton, MO 63105  
314-727-7211

CONTACT: Rich Koster  
Earl "Butch" Buchholz, Commissioner

## **NEW ORLEANS NETS**

PO Box 53213  
New Orleans, LO  
504-581-5005

CONTACT: Barry Mendelson  
Arena: The Superdome

## **ANAHEIM ORANGES**

800 West Katella  
Anaheim, CA 92802  
714-956-1890

CONTACT: Diana Harris  
Arena: Anaheim Convention Center

## **NEW YORK APPLES**

230 Park Ave.  
New York, NY 10017  
212-661-8070

CONTACT: Marty Appel  
Arena: Madison Square Garden Center

## **GOLDEN GATERS**

Suite 110 Watergate Tower  
Emeryville, CA 94608  
415-652-8404

CONTACT: Chuck Bennett  
Arena: Oakland Coliseum

## **PHOENIX RACQUETS**

1130 East Missouri-Suite 404  
Phoenix, AZ 85014  
602-263-5312

CONTACT: Dave Weiser  
Arena: Veterans Memorial Coliseum

## **INDIANA LOVES**

2441 Production Dr.-Suite 103  
Indianapolis, IND 46241  
317-293-6644

CONTACT: Bill Bereman  
Arena: Market Square Arena

## **SAN DIEGO FRIARS**

Lion Plaza-Suite 624  
Hotel Circle North  
San Diego, CA 92108  
714-298-9855

CONTACT: Irv Grossman 714-452-8640  
Arena: San Diego Sports Center

## **LOS ANGELES STRINGS**

2116 Wilshire Blvd.-Suite 206  
Santa Monica, CA 90403  
213-829-5391

CONTACT: Randy Perla  
Arena: The Forum

## **SEATTLE CASCADES**

300 Vine St.-Suite 10  
Seattle, WA 98111  
206-622-3943

CONTACT: Pat Dawson  
Arena: Seattle Center Coliseum



# 1978 HOME & AWAY SCHEDULE

**APRIL** 23 at Anaheim Oranges  
(Sacramento)

24 at Anaheim Oranges

25 at Seattle Cascades

26 at Los Angeles Strings

27 at San Diego Friars

29 at Golden Gaters

**MAY** 1 at Phoenix Racquets

3 at Los Angeles Strings  
(St. Louis)

\* 6 LOS ANGELES STRINGS

10 SEATTLE CASCADES

12 at New York Apples

24 GOLDEN GATERS

25 NEW YORK APPLES  
(Providence)

26 at San Diego Friars  
(St. Louis)

\*31 NEW ORLEANS NETS

**JUNE** 3 at Indiana Loves

6 ANAHEIM ORANGES

7 INDIANA LOVES  
(Clark Univ.)

9 at Indiana Loves

12 GOLDEN GATERS

14 ANAHEIM ORANGES

15 at New York Apples

\*16 NEW YORK APPLES

17 at New Orleans Nets

**JULY** 11 INDIANA LOVES  
(Cape Cod)

12 PHOENIX RACQUETS

17 at Phoenix Racquets  
(Kansas City)

18 at Anaheim Oranges

20 at Seattle Cascades

21 at Golden Gaters

23 SAN DIEGO FRIARS

24 SAN DIEGO FRIARS  
(Cape Cod)

25 NEW ORLEANS NETS  
(Cape Cod)

26 INDIANA LOVES

28 at New Orleans Nets

29 at Indiana Loves  
(Rochester, Minn.)

\*30 LOS ANGELES STRINGS

31 NEW YORK APPLES  
(Cape Cod)

**AUGUST** 2 SEATTLE CASCADES

3 at New York Apples

\* 6 ANAHEIM ORANGES

8 PHOENIX RACQUET

12 at New Orleans Nets

13 NEW ORLEANS NETS

\*TV 38 Matches

WIMBLEDON BREAK JUNE 18-JULY 10